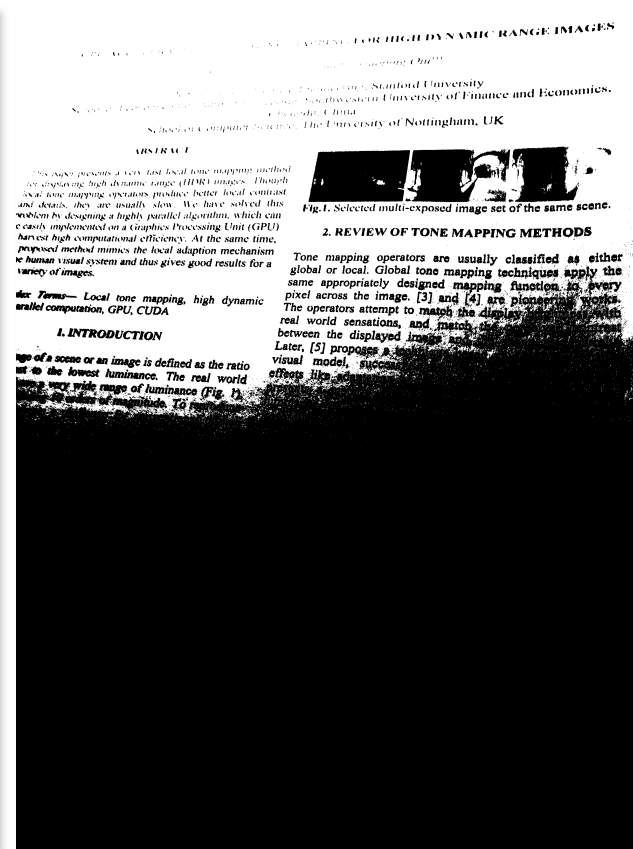
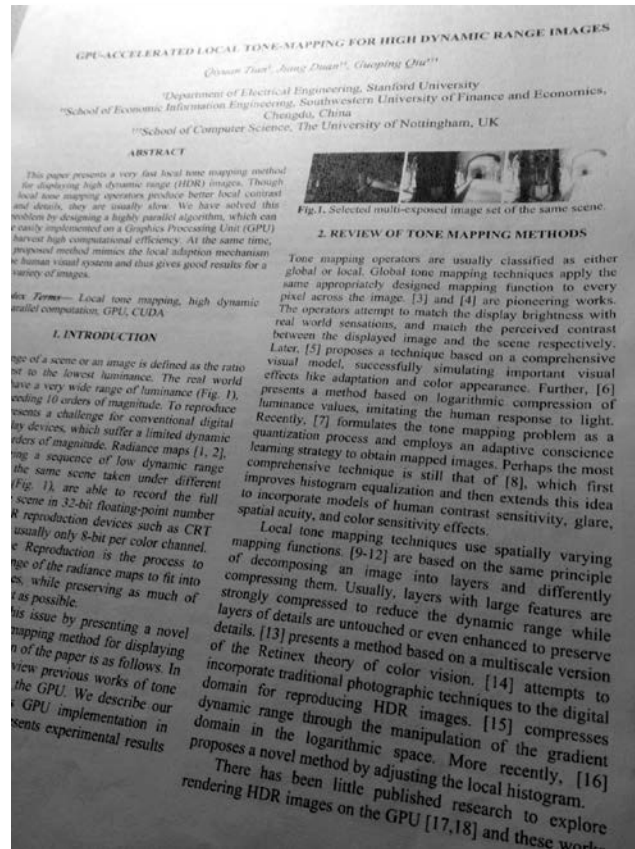


Sometimes, a global threshold does not work

Original image

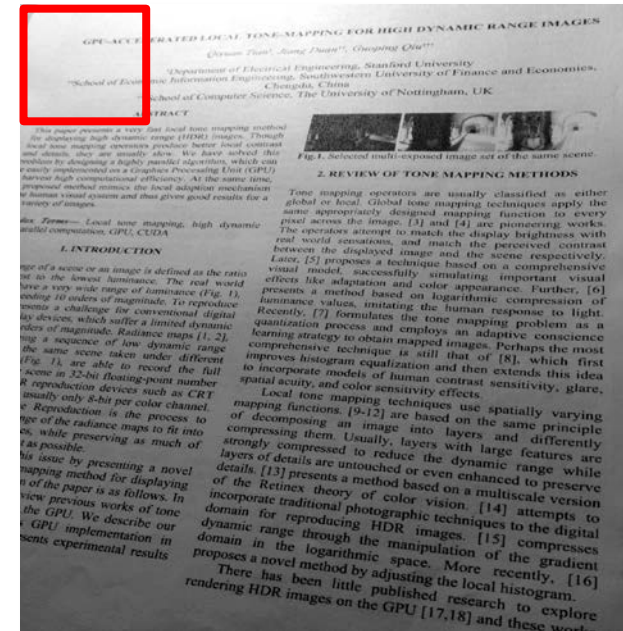


Thresholded with Otsu's Method



Locally adaptive thresholding

- Slide a window over the image
- For each window position, decide whether to perform thresholding
 - Thresholding should not be performed in uniform areas
 - Use variance or other suitable criterion
- Non-uniform areas: apply Otsu's method (based on local histogram)
- Uniform areas: classify the entire area as foreground or background based on mean value



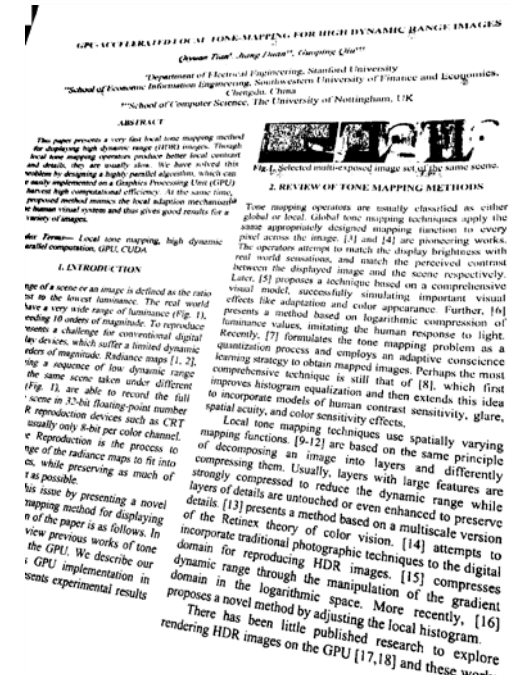
Locally adaptive thresholding (example)



Non-uniform areas



Local threshold values



Locally thresholded result

