

A Theory Approach to Local-to-Global Algorithms in Spatial Multi-Agent Systems

CS266, Fall 2007

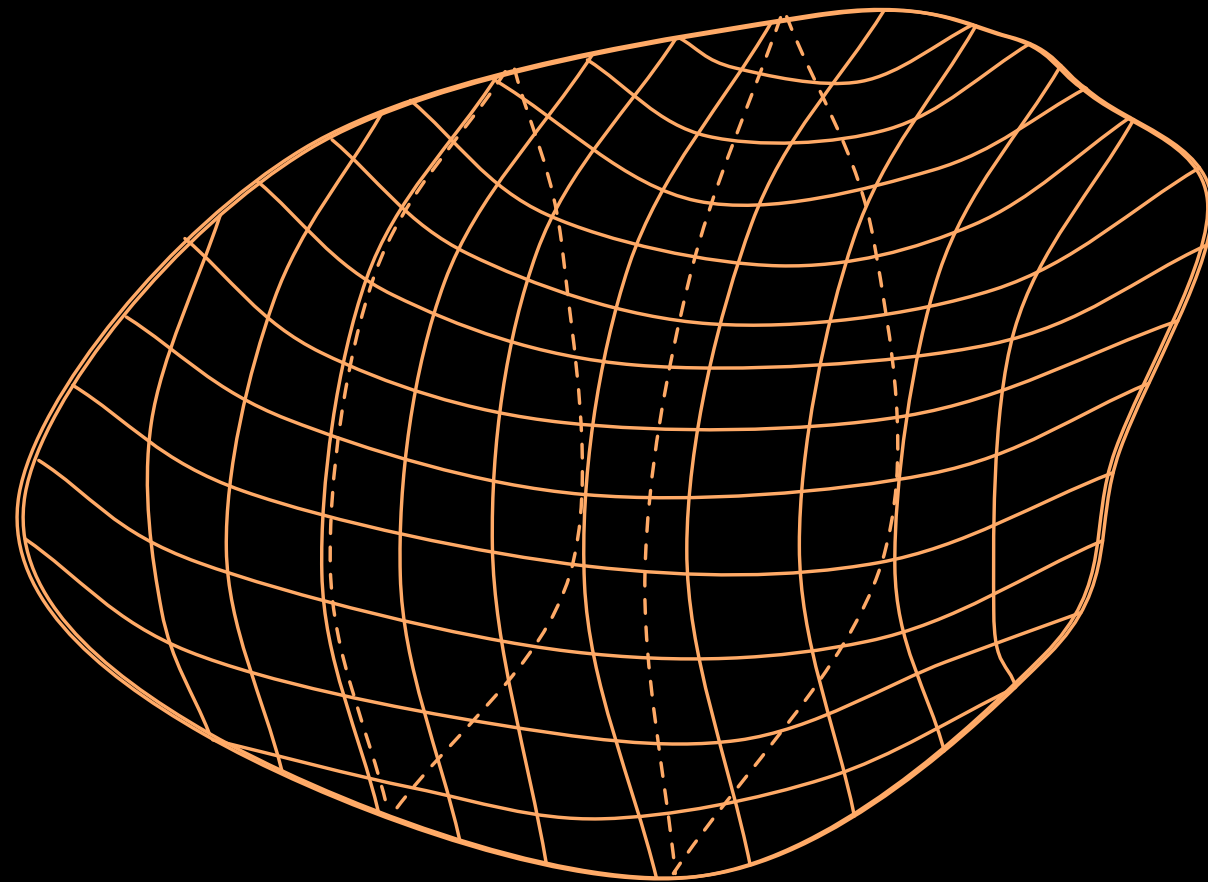
Dan Yamins

Session I: 12.04.2007

Spatial Multi-agent Systems

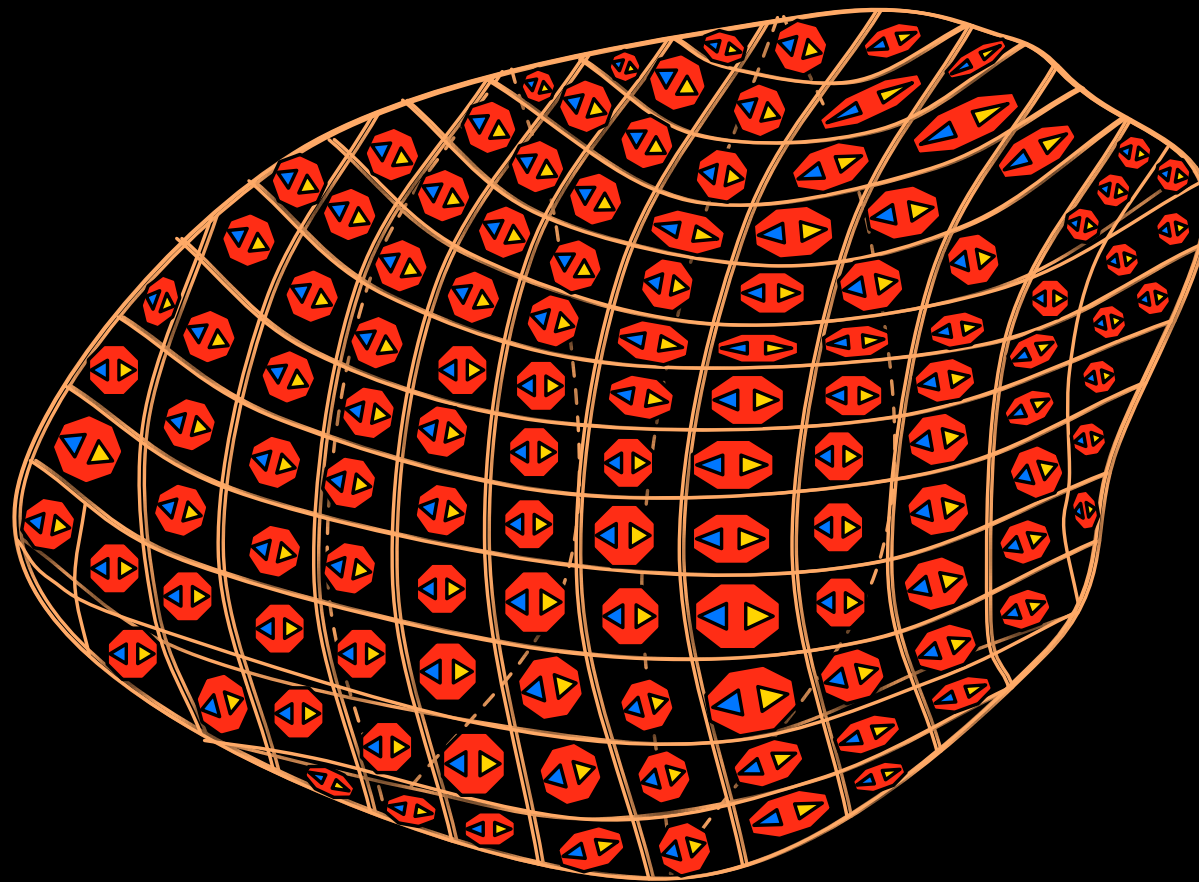
Spatial Multi-agent Systems

a space



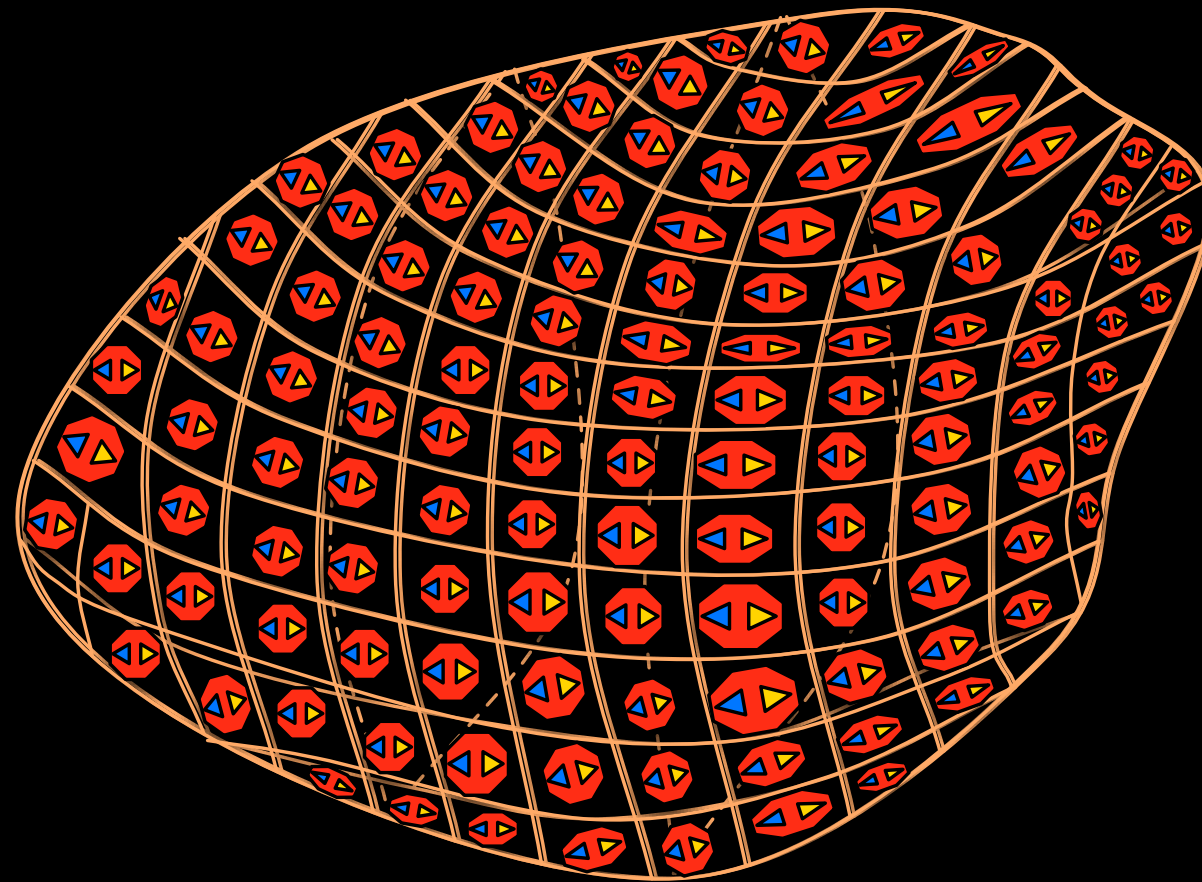
Spatial Multi-agent Systems

a space with agents embedded in the space



Spatial Multi-agent Systems

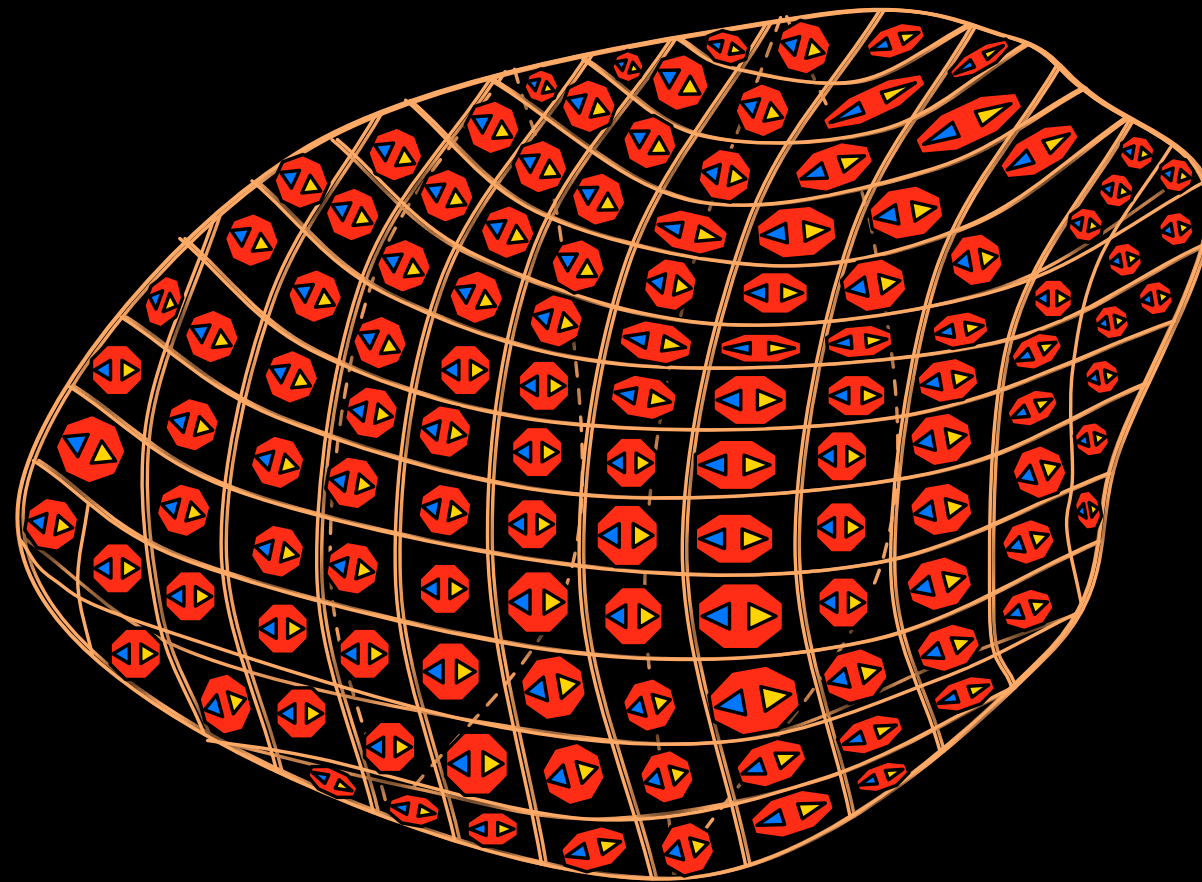
a space with agents embedded in the space



local information and processing

Spatial Multi-agent Systems

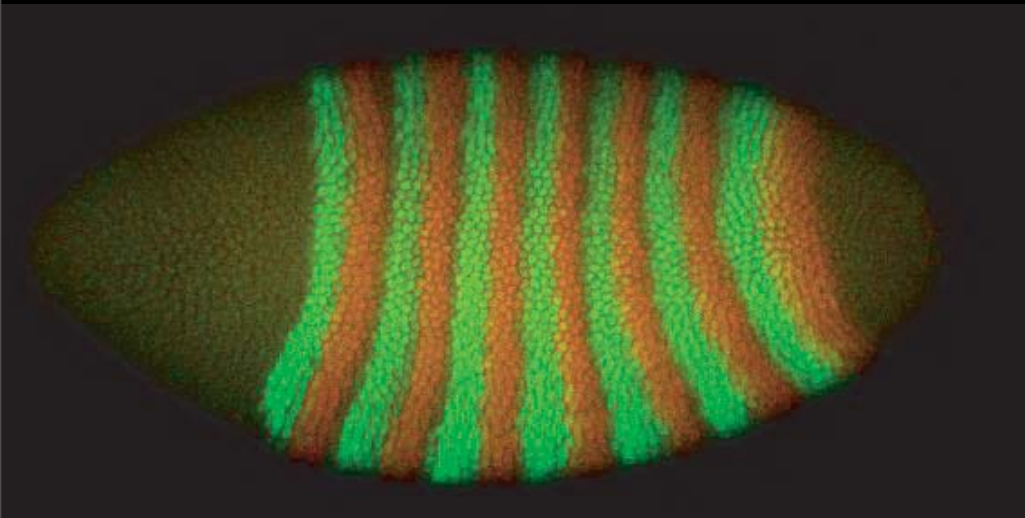
a space with agents embedded in the space



local information and processing
globally defined tasks

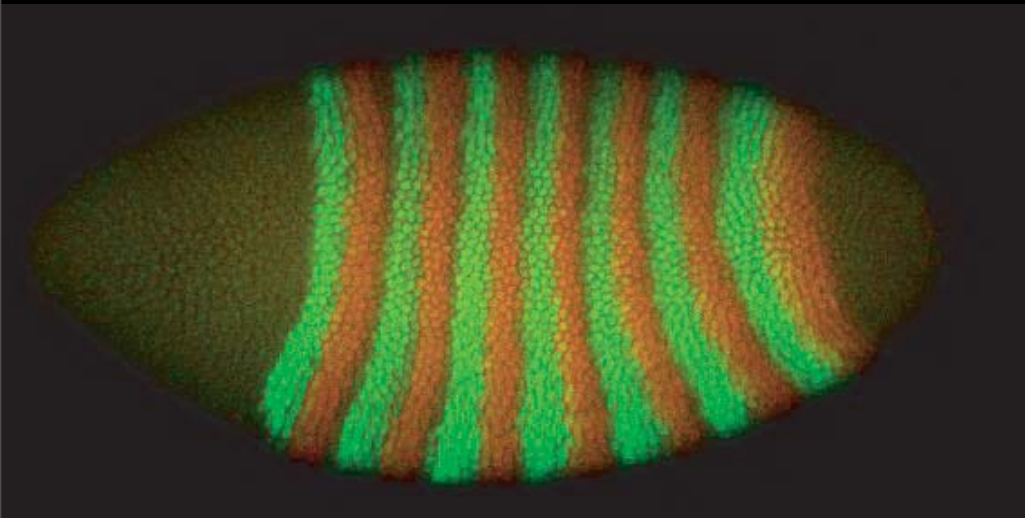
biology:

biology:



drosophila embryo

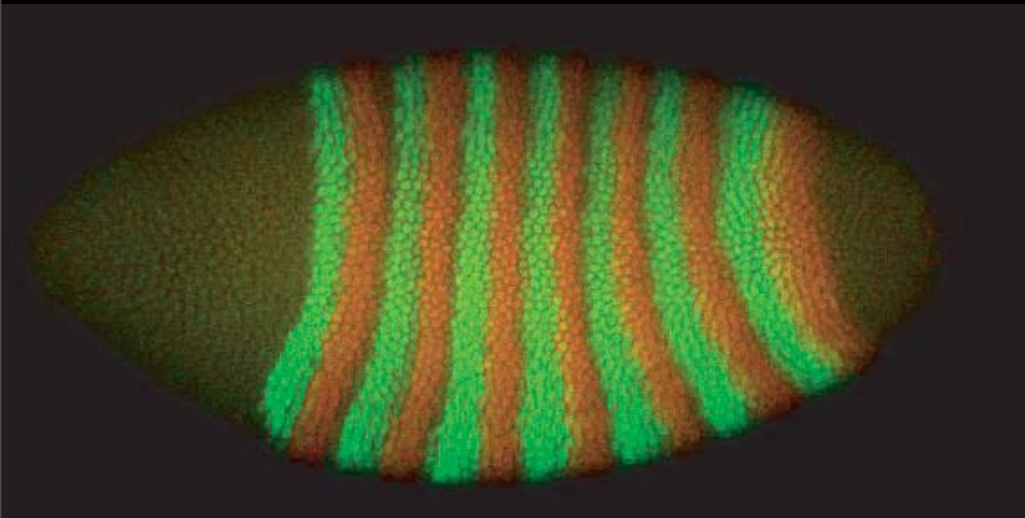
biology:



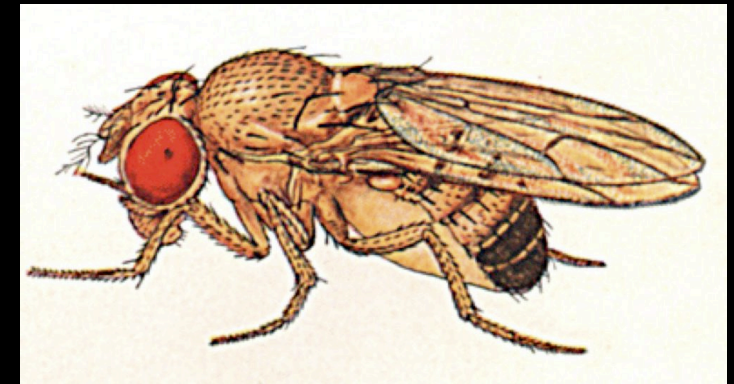
drosophila embryo



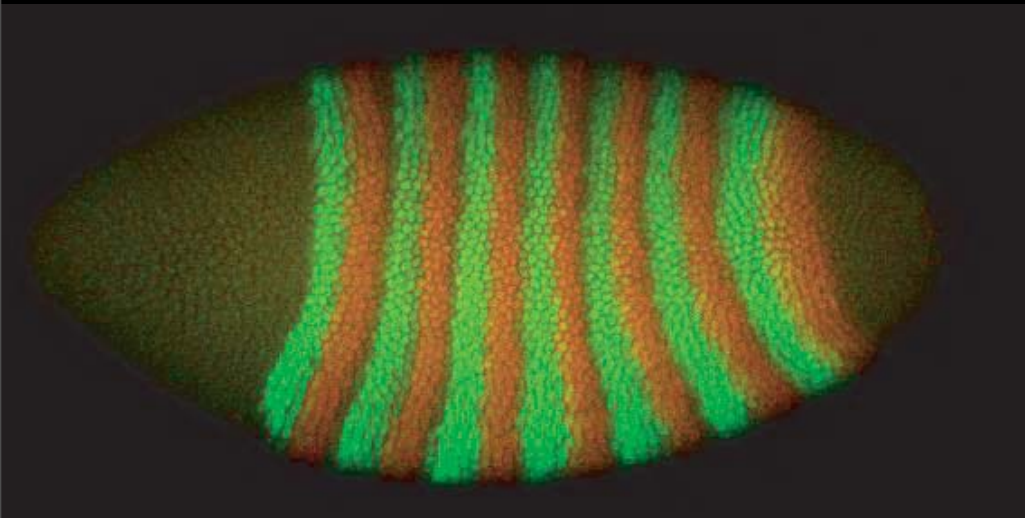
biology:



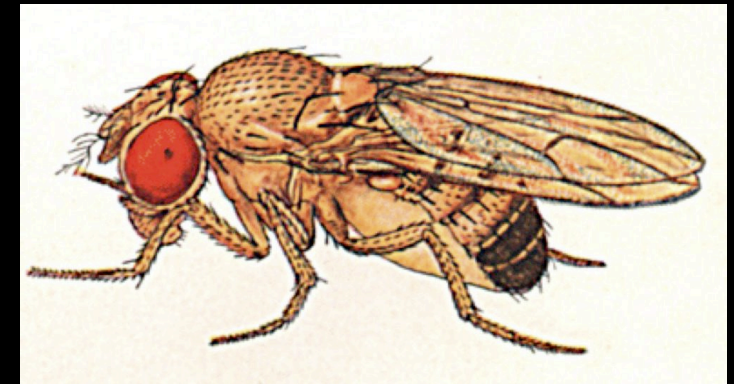
drosophila embryo



biology:

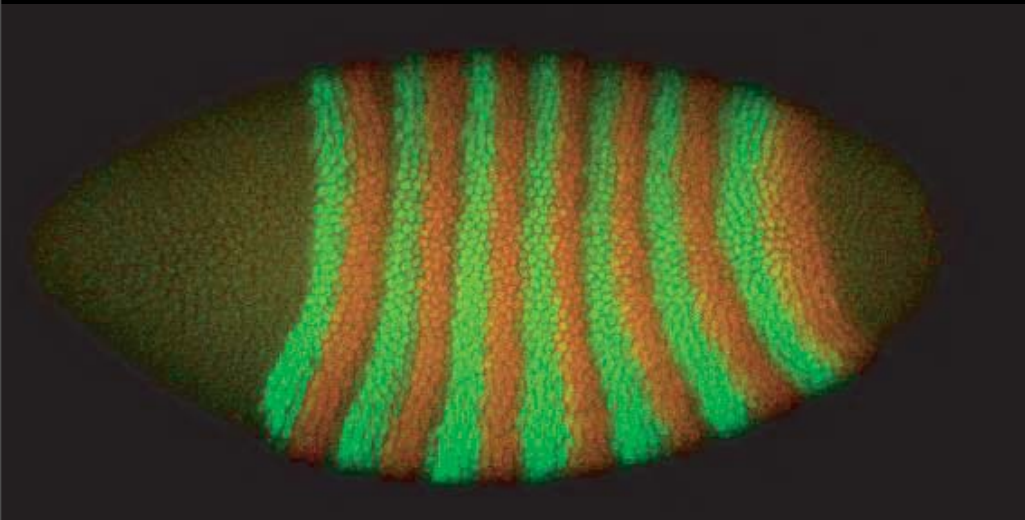


drosophila embryo

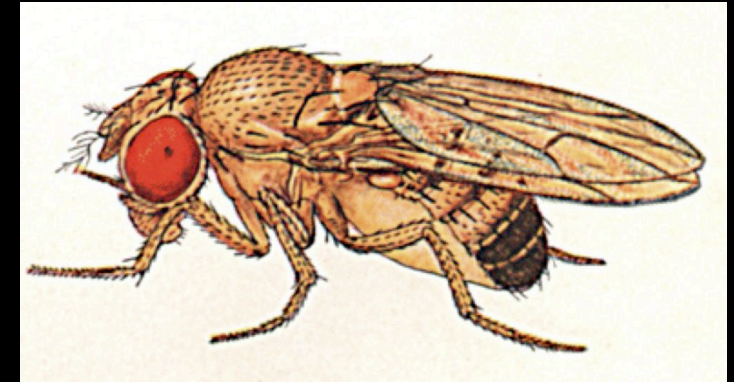


polistes nest

biology:

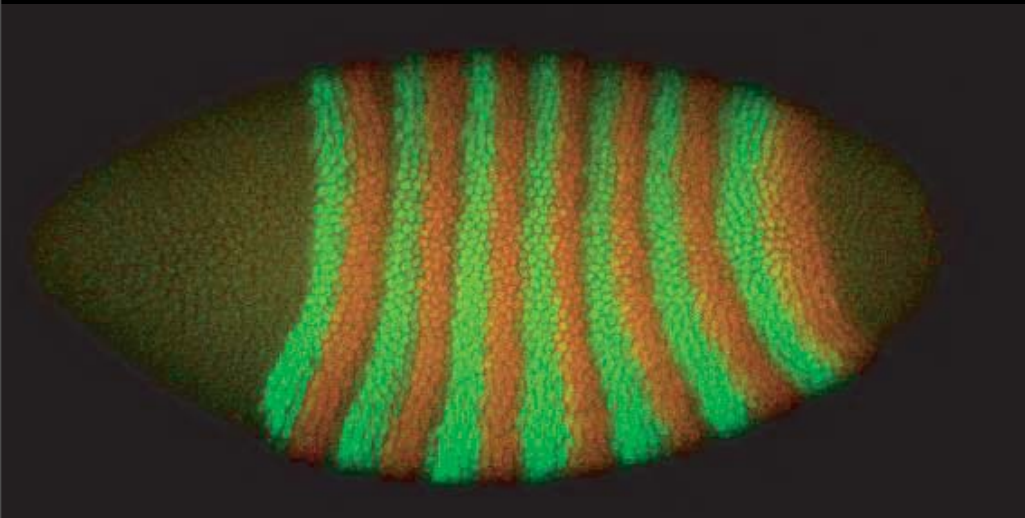


drosophila embryo

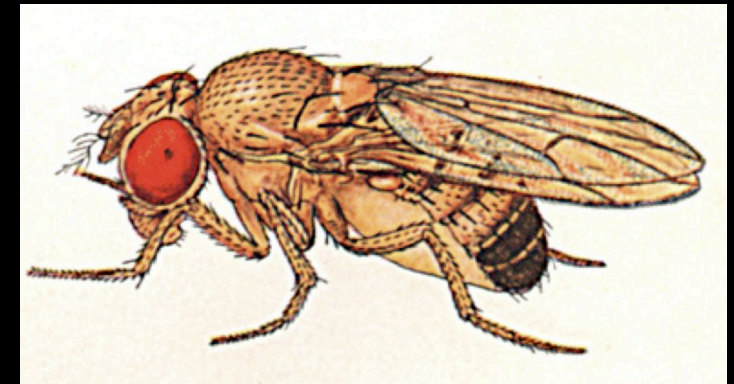


polistes nest

biology:

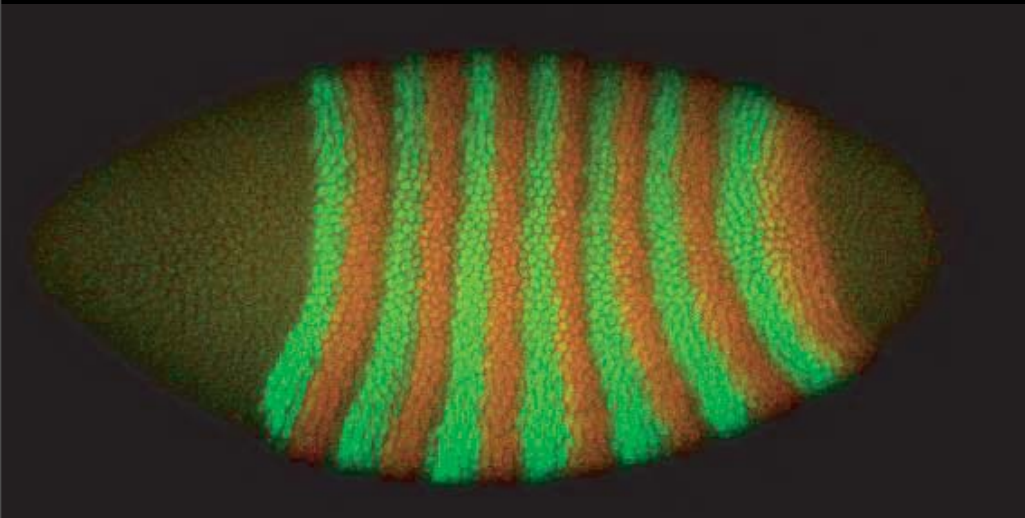


drosophila embryo

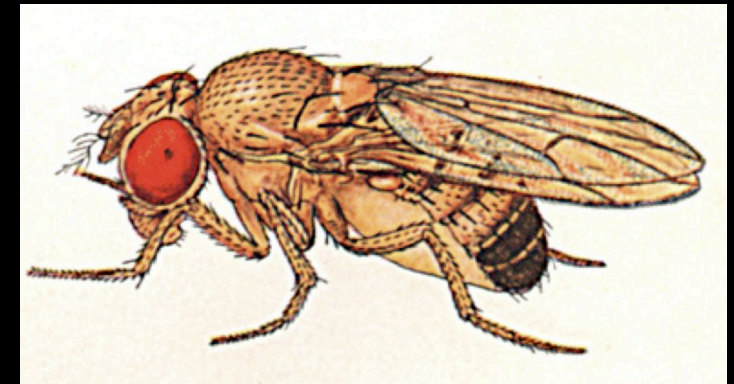


polistes nest

biology:



drosophila embryo



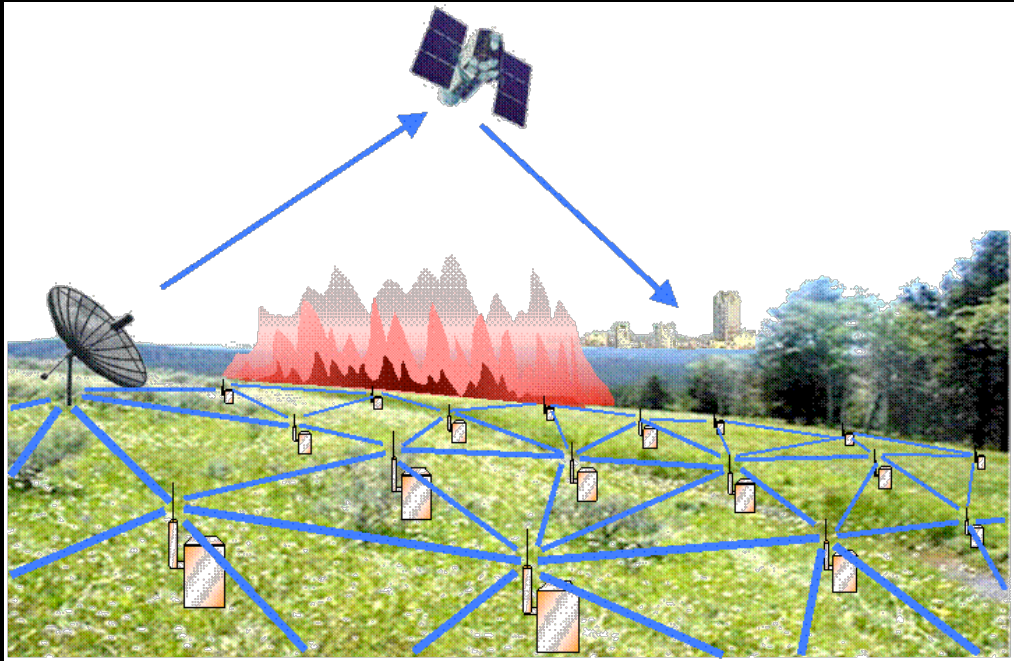
polistes nest



white ibis flock

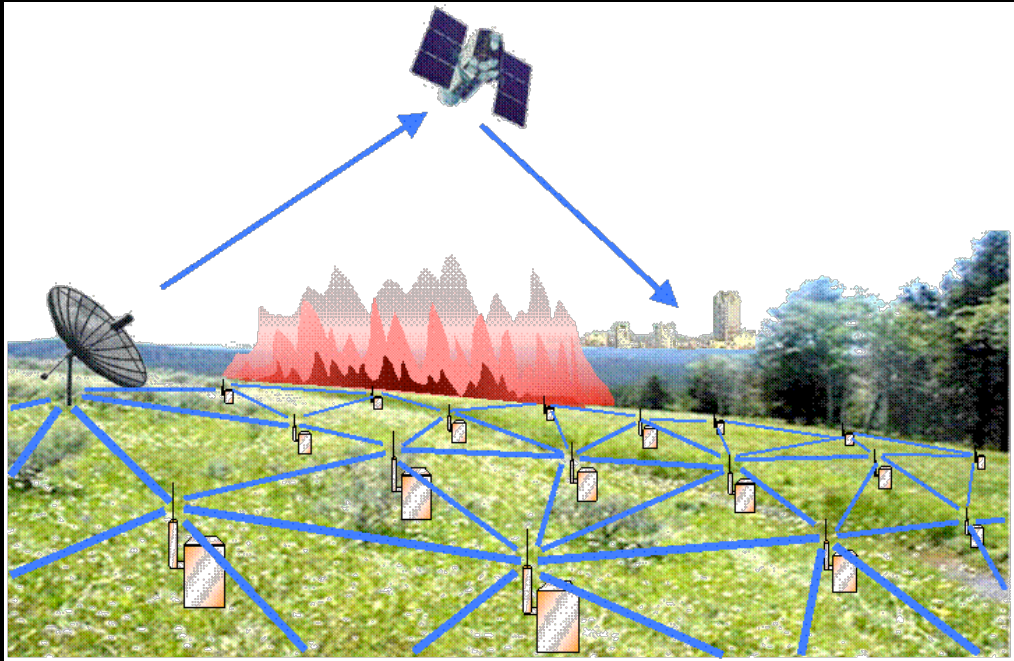
engineering:

engineering:

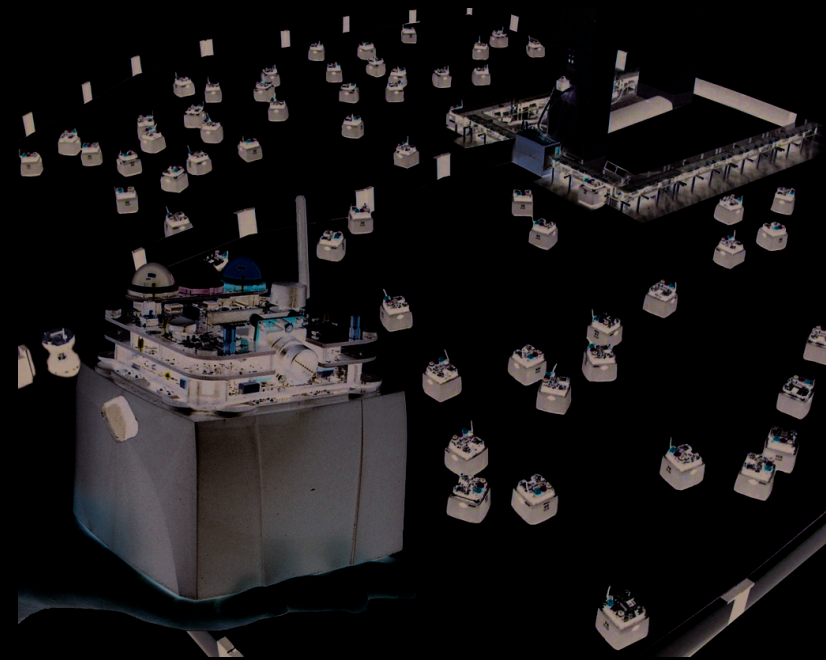


Sensor Networks

engineering:

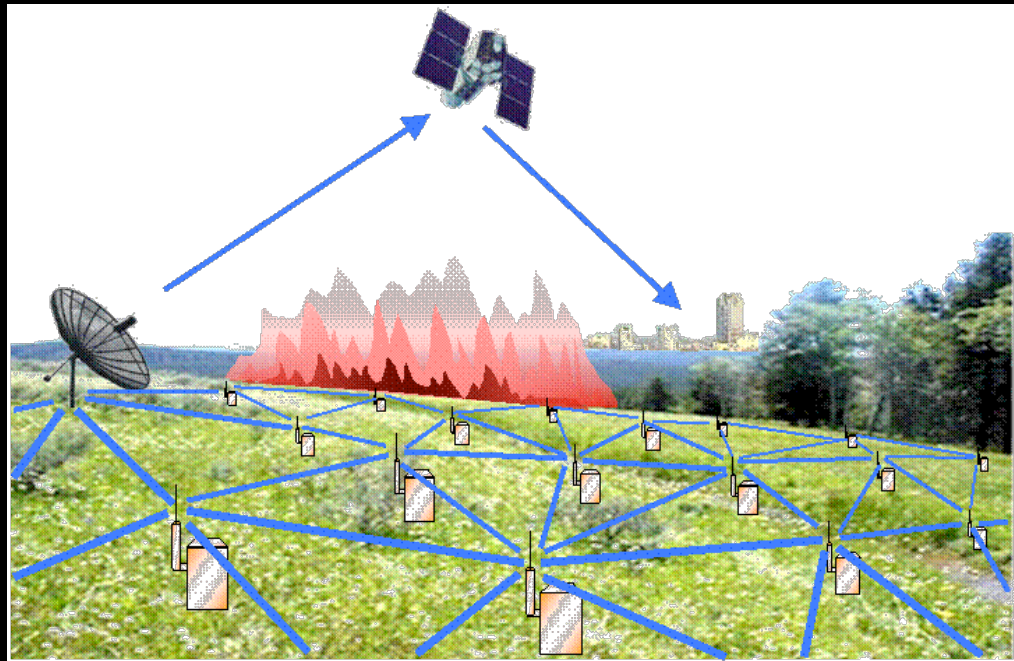


Sensor Networks

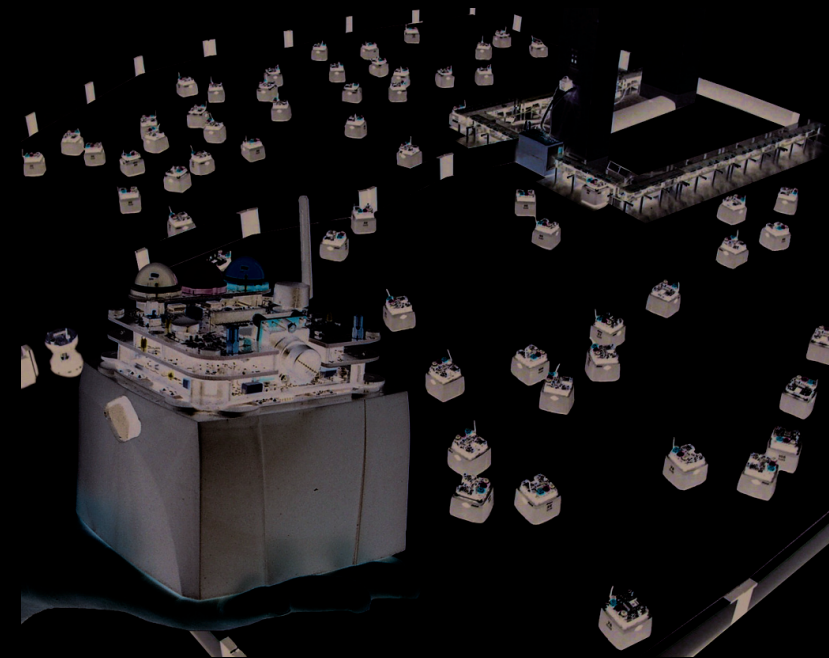


McLurkin iRobot Swarm

engineering:



Sensor Networks

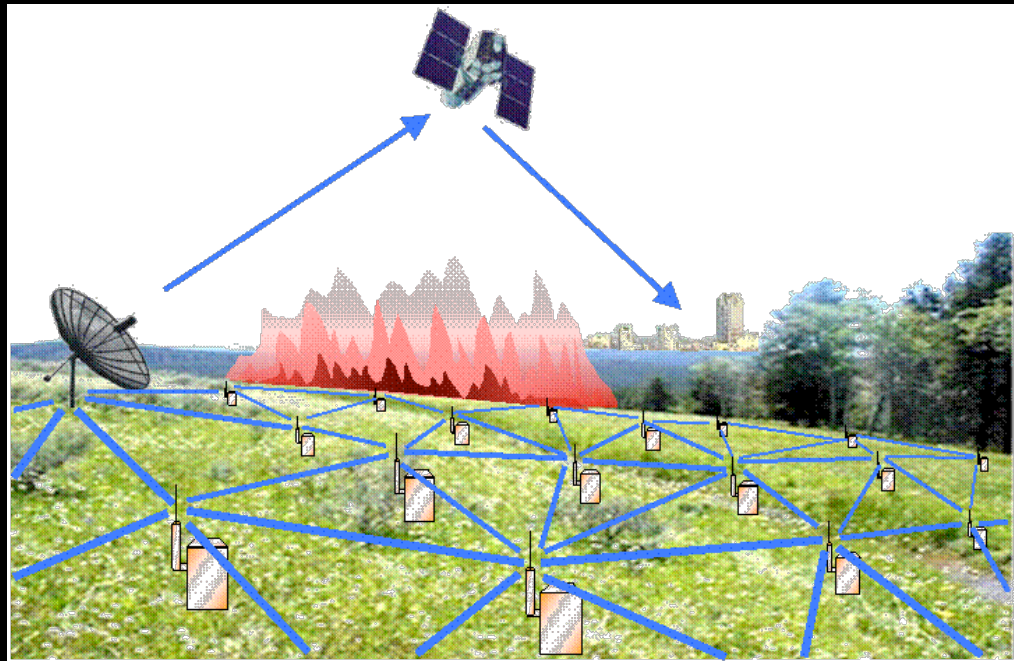


McLurkin iRobot Swarm

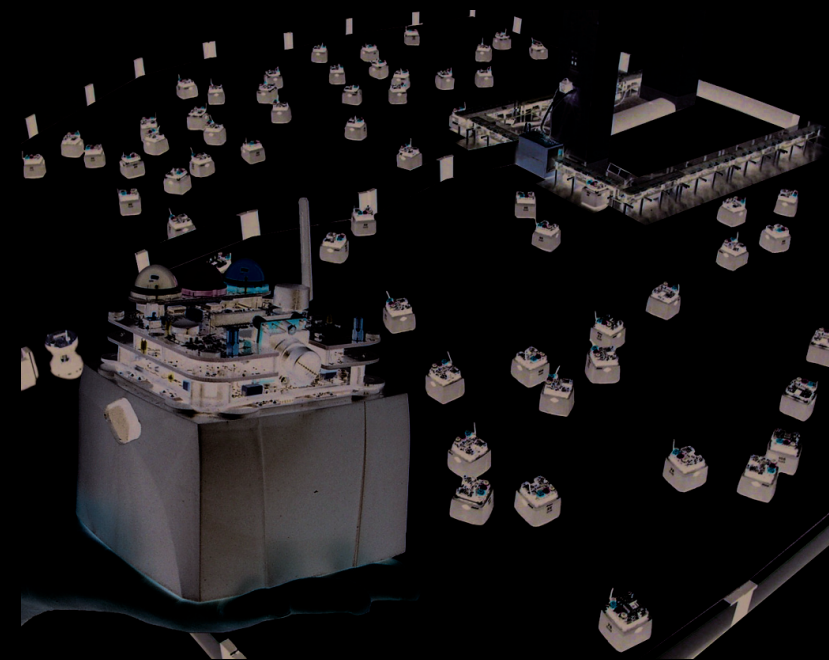


Saul Griffith's self-folding structures

engineering:



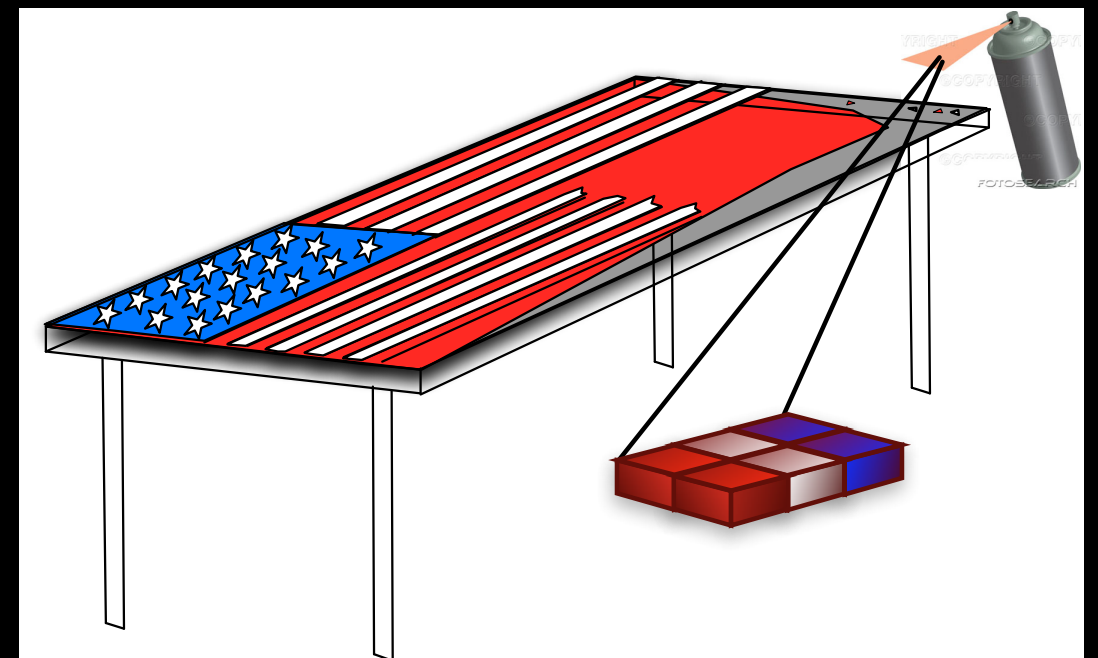
Sensor Networks



McLurkin iRobot Swarm



Saul Griffith's self-folding structures



Butera's "paintable computer" concept

Challenges ...

Challenges ...

- It's hard to translate Global imperatives into local actions:

Challenges ...

- It's hard to translate Global imperatives into local actions:
 - G to L: description level mismatch

Challenges ...

- It's hard to translate Global imperatives into local actions:
 - G to L: description level mismatch
 - L to G: inscrutable complexity

Challenges ...

- It's hard to translate Global imperatives into local actions:
 - G to L: description level mismatch
 - L to G: inscrutable complexity
- Desire for provable and quantifiable robustness

Challenges ...

- It's hard to translate Global imperatives into local actions:
 - G to L: description level mismatch
 - L to G: inscrutable complexity
- Desire for provable and quantifiable robustness
- What agent resource capacities are required to solve a given task? Is the global task even locally solvable at all?

Challenges ...

- It's hard to translate Global imperatives into local actions:
 - G to L: description level mismatch
 - L to G: inscrutable complexity
- Desire for provable and quantifiable robustness
- What agent resource capacities are required to solve a given task? Is the global task even locally solvable at all?
- What does thinking of natural spatial computers *qua* computers tell us scientifically?

Challenges ...

- It's hard to translate Global imperatives into local actions:
 - G to L: description level mismatch
 - L to G: inscrutable complexity
- Desire for provable and quantifiable robustness
- What agent resource capacities are required to solve a given task? Is the global task even locally solvable at all?
- What does thinking of natural spatial computers *qua* computers tell us scientifically?

... the Need for A Theory

Specific Problems ...

Specific Problems ...

- **A Description Problem:** What are appropriate formal models for spatial multi-agent systems? For the agents themselves? For local rules? For global tasks? (Today)

Specific Problems ...

- **A Description Problem:** What are appropriate formal models for spatial multi-agent systems? For the agents themselves? For local rules? For global tasks? (Today)
- **An Existence Problem:** When do given global tasks even have robust local rule solutions in the first place? What features make a global problem robustly solvable? (Session 2)

Specific Problems ...

- **A Description Problem:** What are appropriate formal models for spatial multi-agent systems? For the agents themselves? For local rules? For global tasks? (Today)
- **An Existence Problem:** When do given global tasks even have robust local rule solutions in the first place? What features make a global problem robustly solvable? (Session 2)
- **A Construction Problem:** Given that problem is solvable, can we algorithmically *construct* a generic procedure for producing solutions? (Session 3)

Specific Problems ...

- **A Description Problem:** What are appropriate formal models for spatial multi-agent systems? For the agents themselves? For local rules? For global tasks? (Today)
- **An Existence Problem:** When do given global tasks even have robust local rule solutions in the first place? What features make a global problem robustly solvable? (Session 2)
- **A Construction Problem:** Given that problem is solvable, can we algorithmically *construct* a generic procedure for producing solutions? (Session 3)
- **A Resources Problem:** The main parameters of a spatial multi-agent system are its *communications capacity* and the *amount of agent internal memory*. Can we trade off between the two? How do the answers to the other problems scale? (Session 4)

Specific Problems ...

- **A Description Problem:** What are appropriate formal models for spatial multi-agent systems? For the agents themselves? For local rules? For global tasks? (Today)
- **An Existence Problem:** When do given global tasks even have robust local rule solutions in the first place? What features make a global problem robustly solvable? (Session 2)
- **A Construction Problem:** Given that problem is solvable, can we algorithmically *construct* a generic procedure for producing solutions? (Session 3)
- **A Resources Problem:** The main parameters of a spatial multi-agent system are its *communications capacity* and the *amount of agent internal memory*. Can we trade off between the two? How do the answers to the other problems scale? (Session 4)

... Global-to-Local compilation.

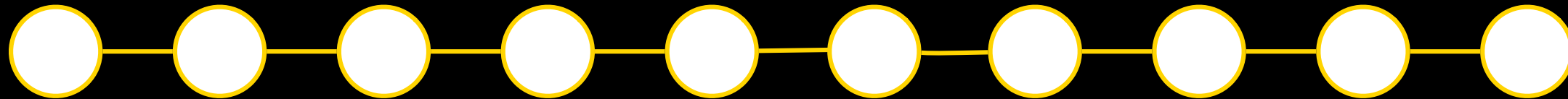
Definition. *An underlying space is a set \mathcal{G} of (partially) directed graphs.*

The Model: Static Configurations

Definition. *An underlying space is a set \mathcal{G} of (partially) directed graphs.*

The Model: Static Configurations

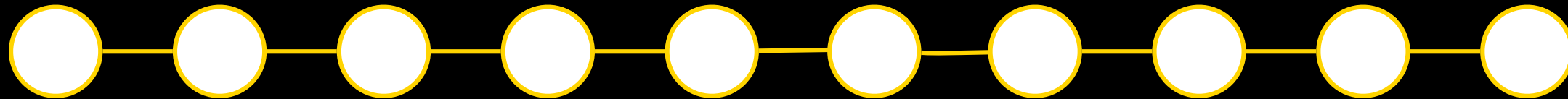
Definition. *An underlying space is a set \mathcal{G} of (partially) directed graphs.*



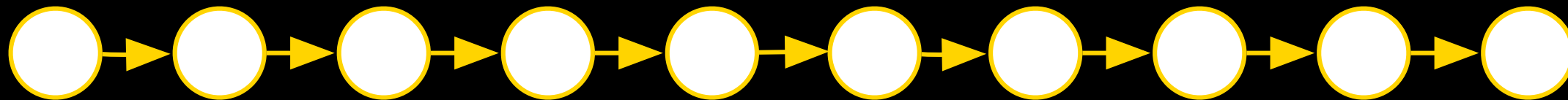
Undirected Lines

The Model: Static Configurations

Definition. An underlying space is a set \mathcal{G} of (partially) directed graphs.



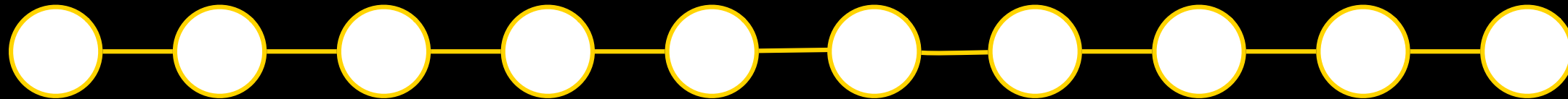
Undirected Lines



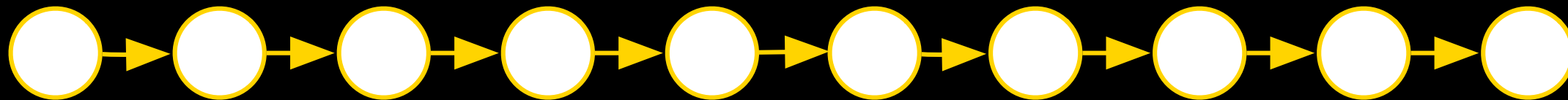
Directed Lines

The Model: Static Configurations

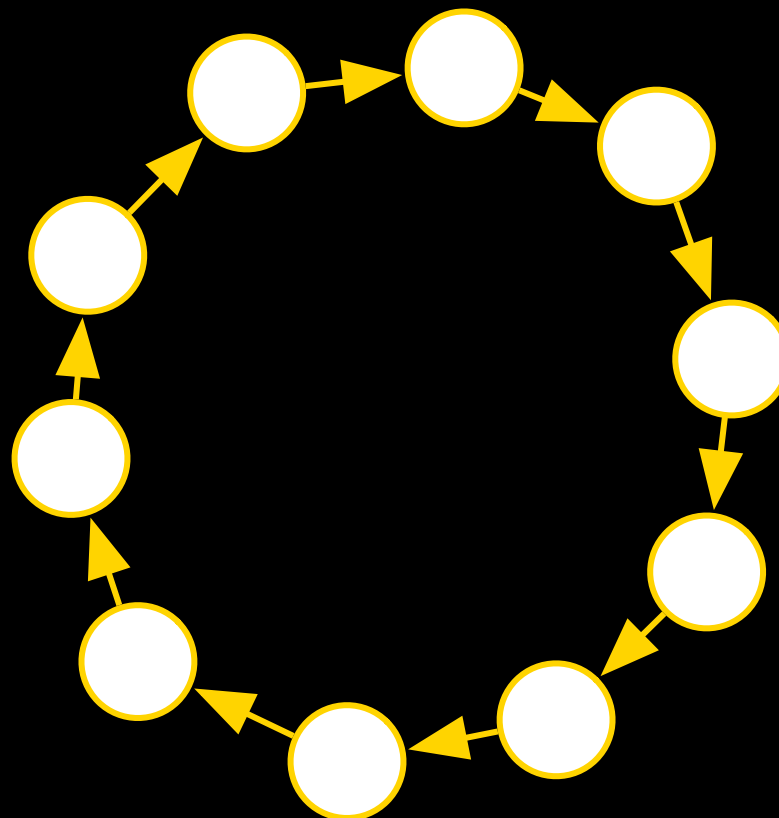
Definition. An underlying space is a set \mathcal{G} of (partially) directed graphs.



Undirected Lines

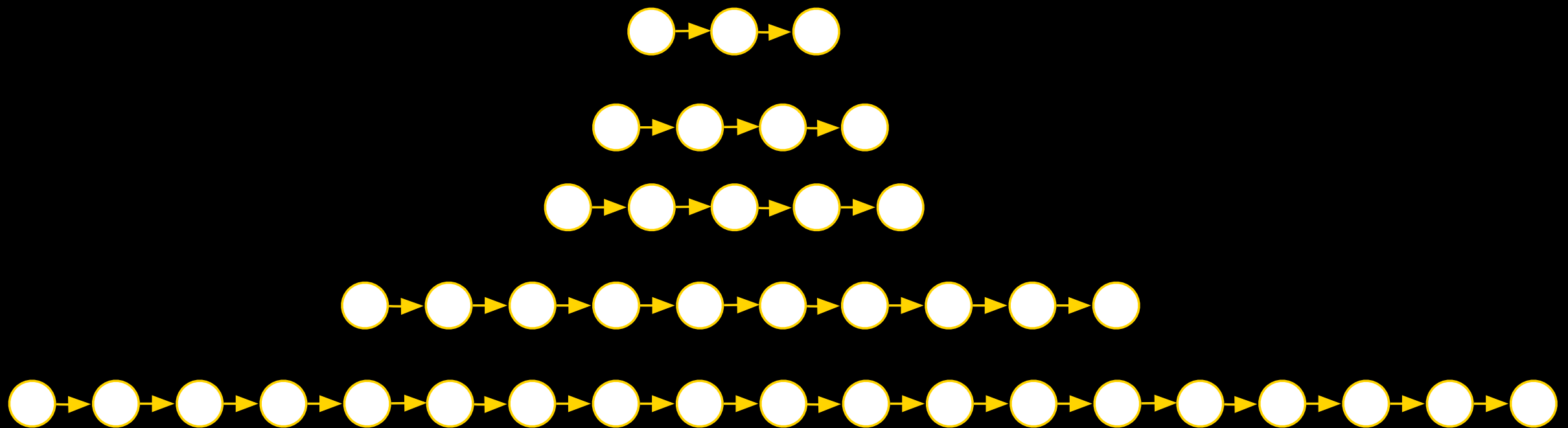


Directed Lines



Ring Lattices

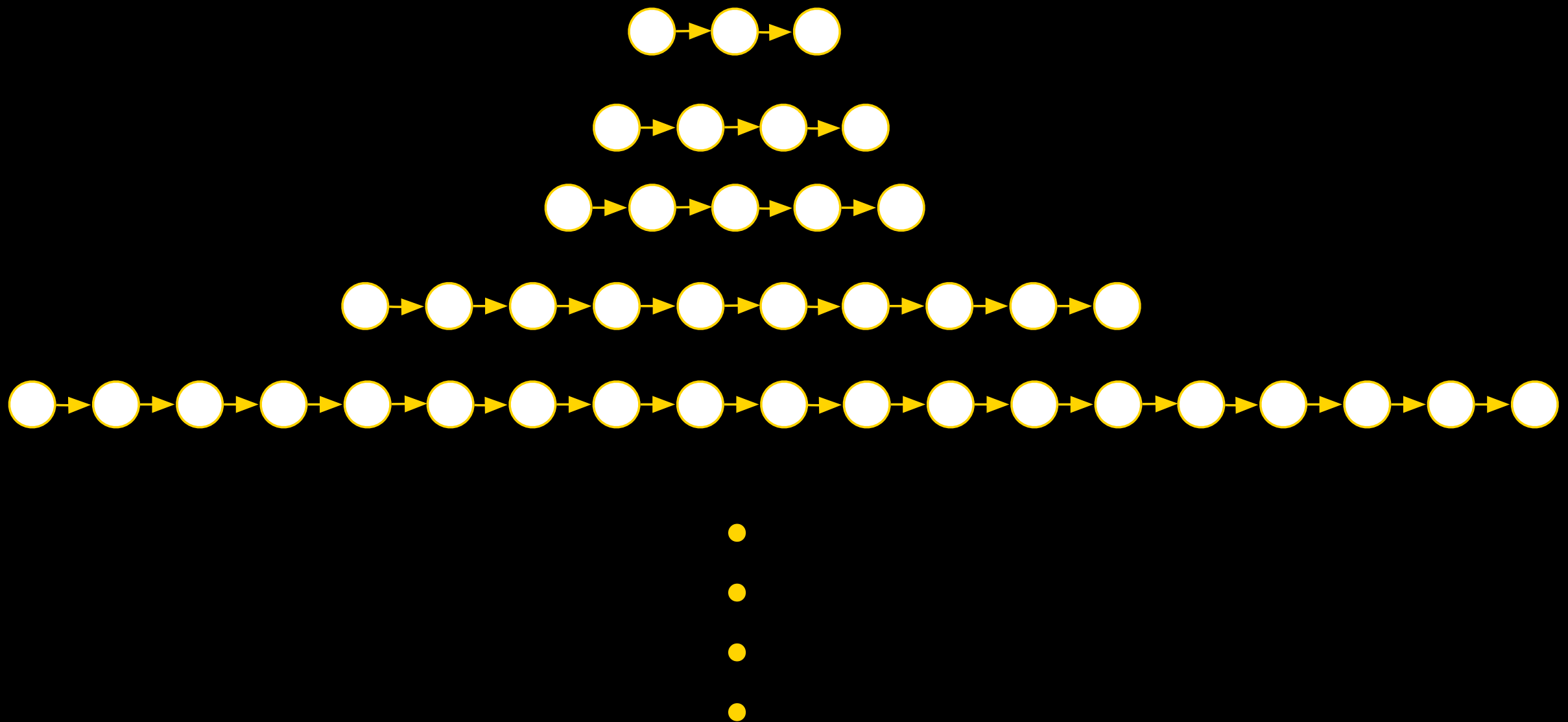
Definition. *An underlying space is a set \mathcal{G} of (partially) directed graphs.*



The Model: Static Configurations

Definition. An underlying space is a set \mathcal{G} of (partially) directed graphs.

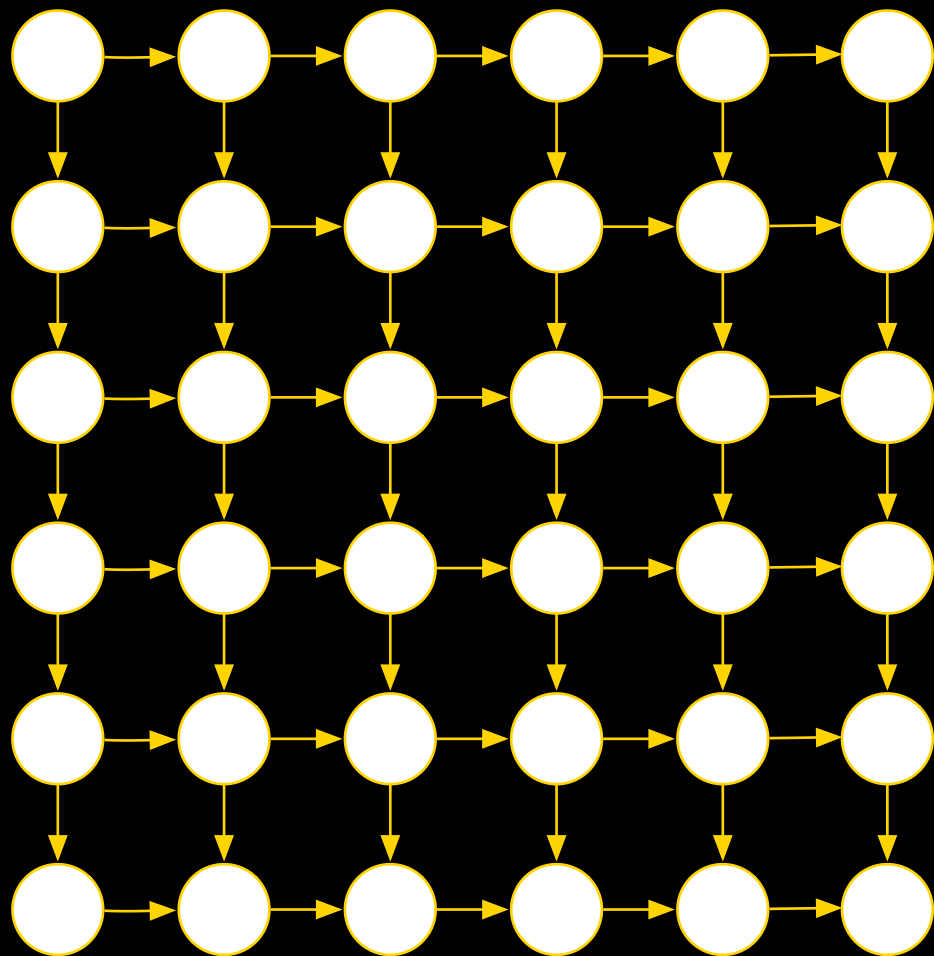
Usually is a *large or infinite* set of configurations



Definition. *An underlying space is a set \mathcal{G} of (partially) directed graphs.*

The Model: Static Configurations

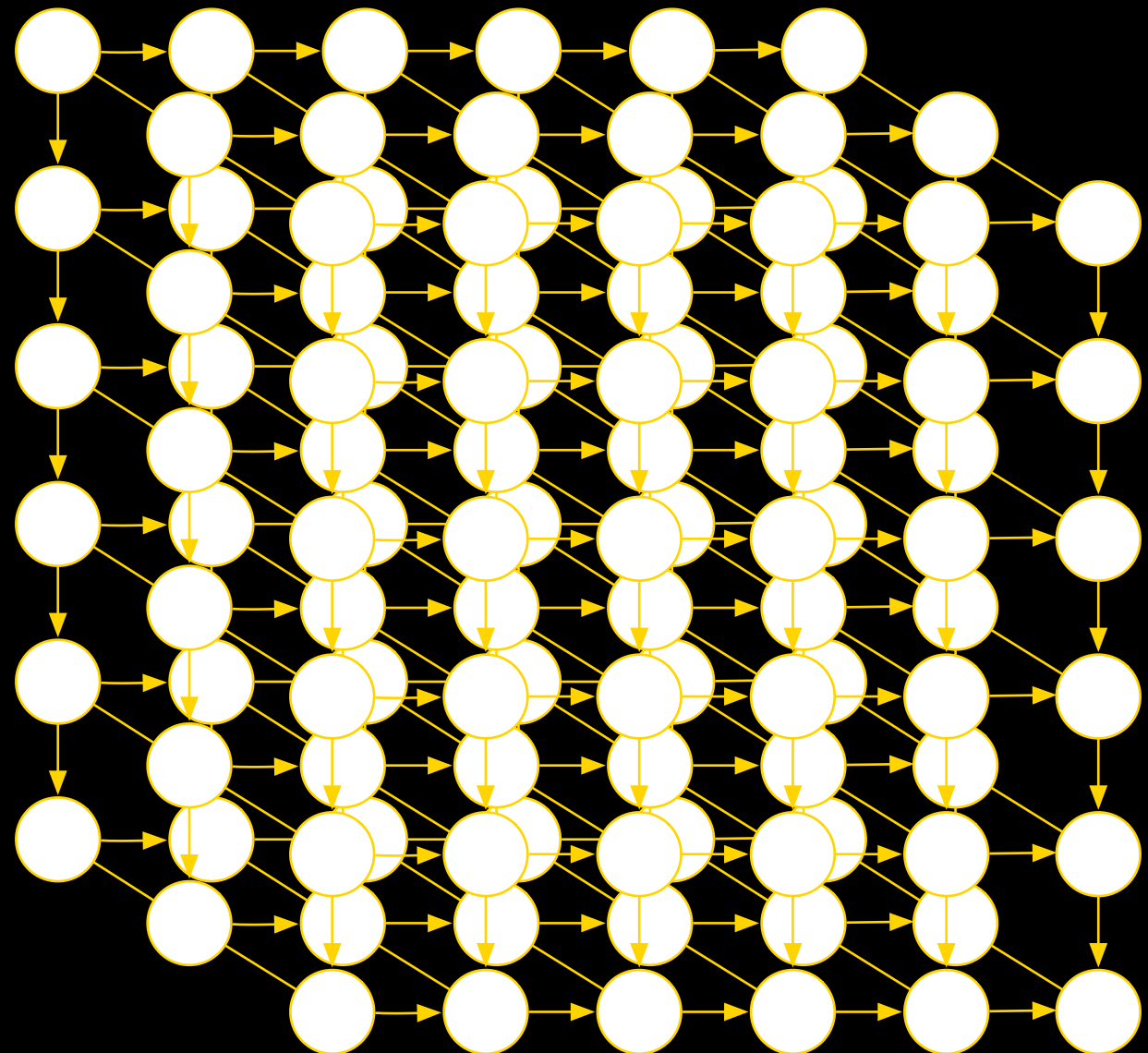
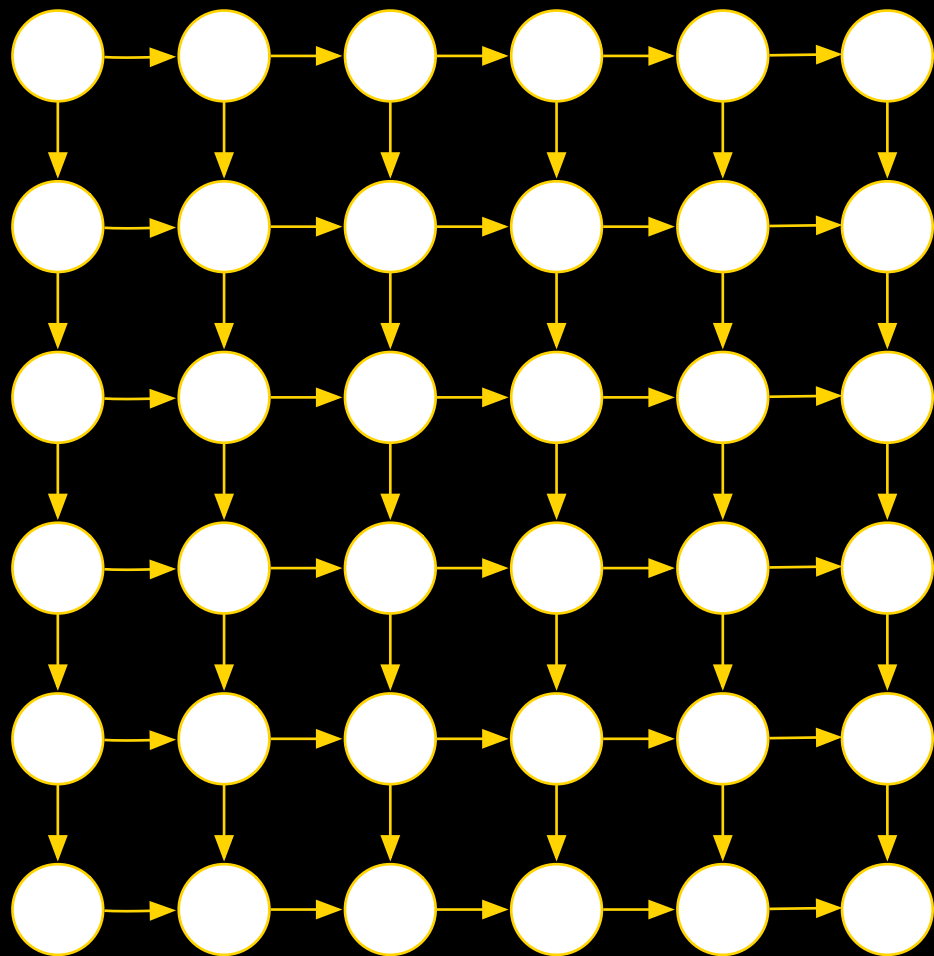
Definition. An underlying space is a set \mathcal{G} of (partially) directed graphs.



Euclidean Lattices

The Model: Static Configurations

Definition. An underlying space is a set \mathcal{G} of (partially) directed graphs.

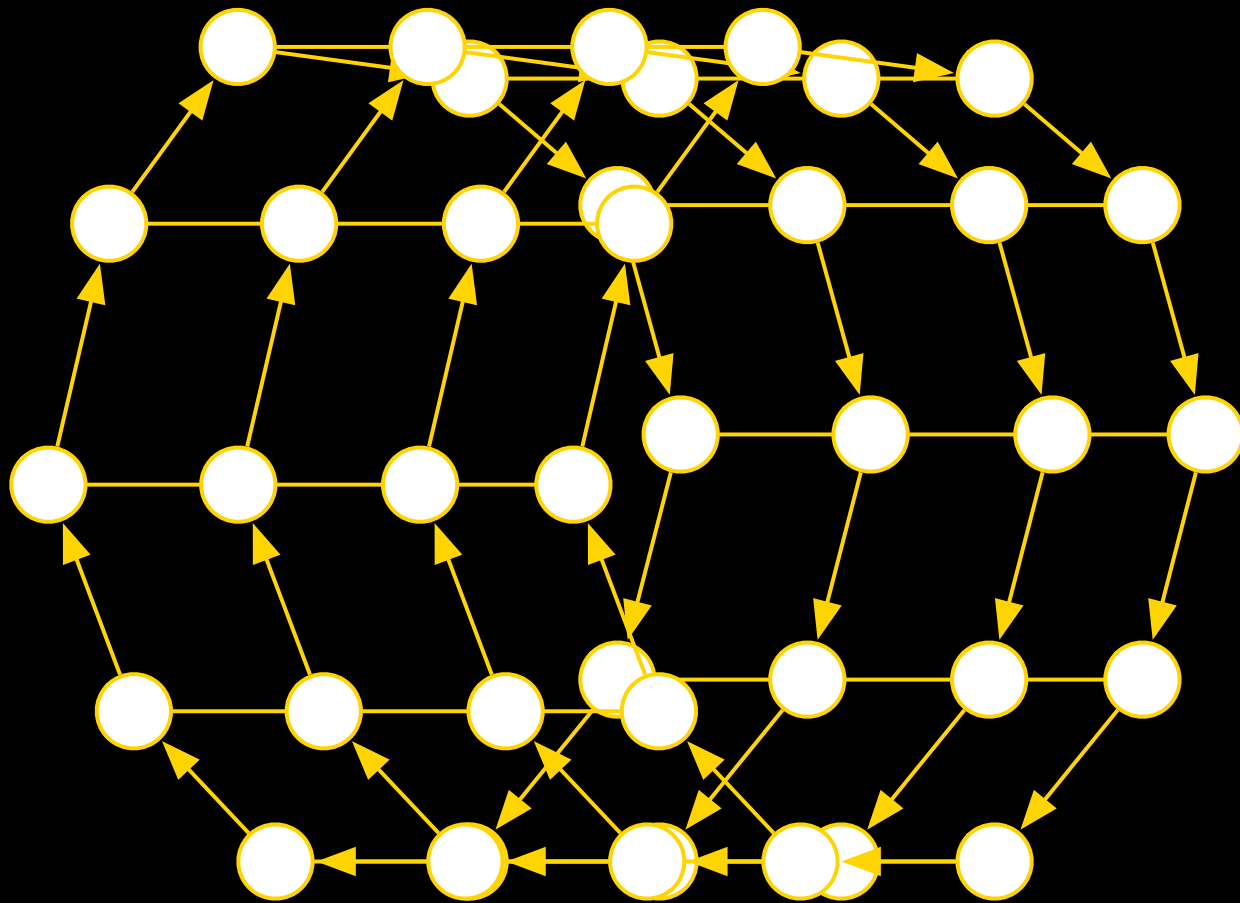


Euclidean Lattices

Definition. *An underlying space is a set \mathcal{G} of (partially) directed graphs.*

The Model: Static Configurations

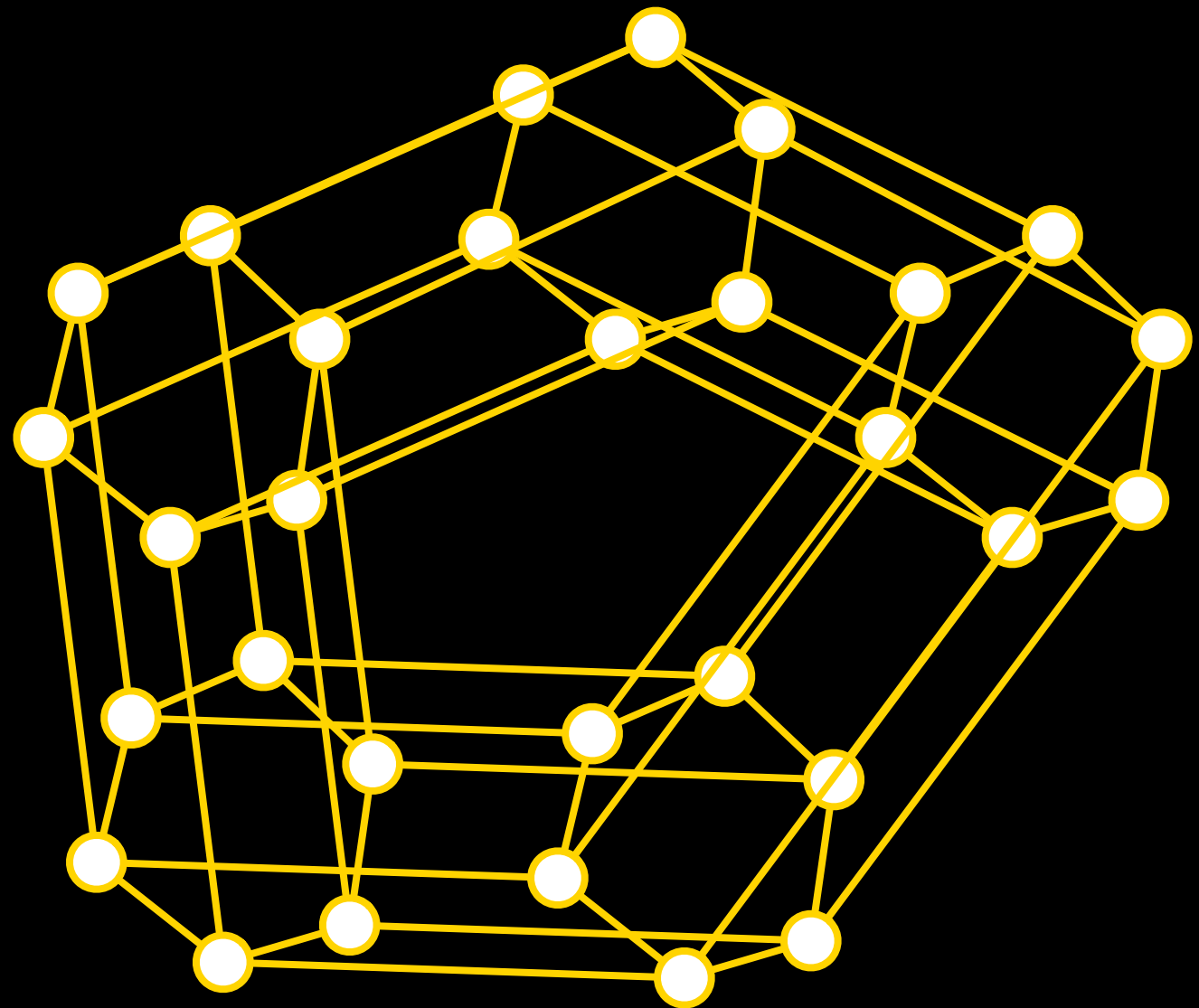
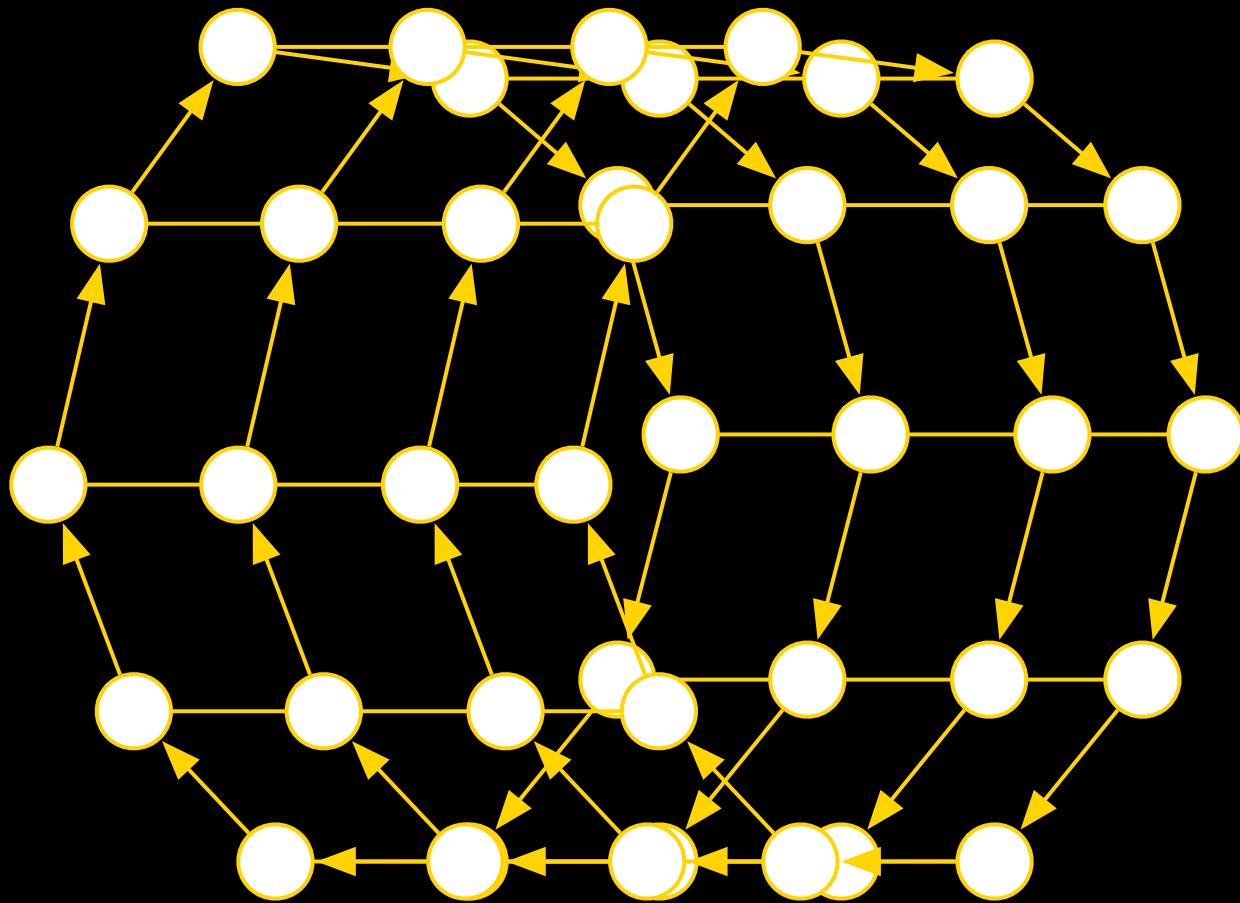
Definition. An underlying space is a set \mathcal{G} of (partially) directed graphs.



Nontrivial Topologies

The Model: Static Configurations

Definition. An underlying space is a set \mathcal{G} of (partially) directed graphs.

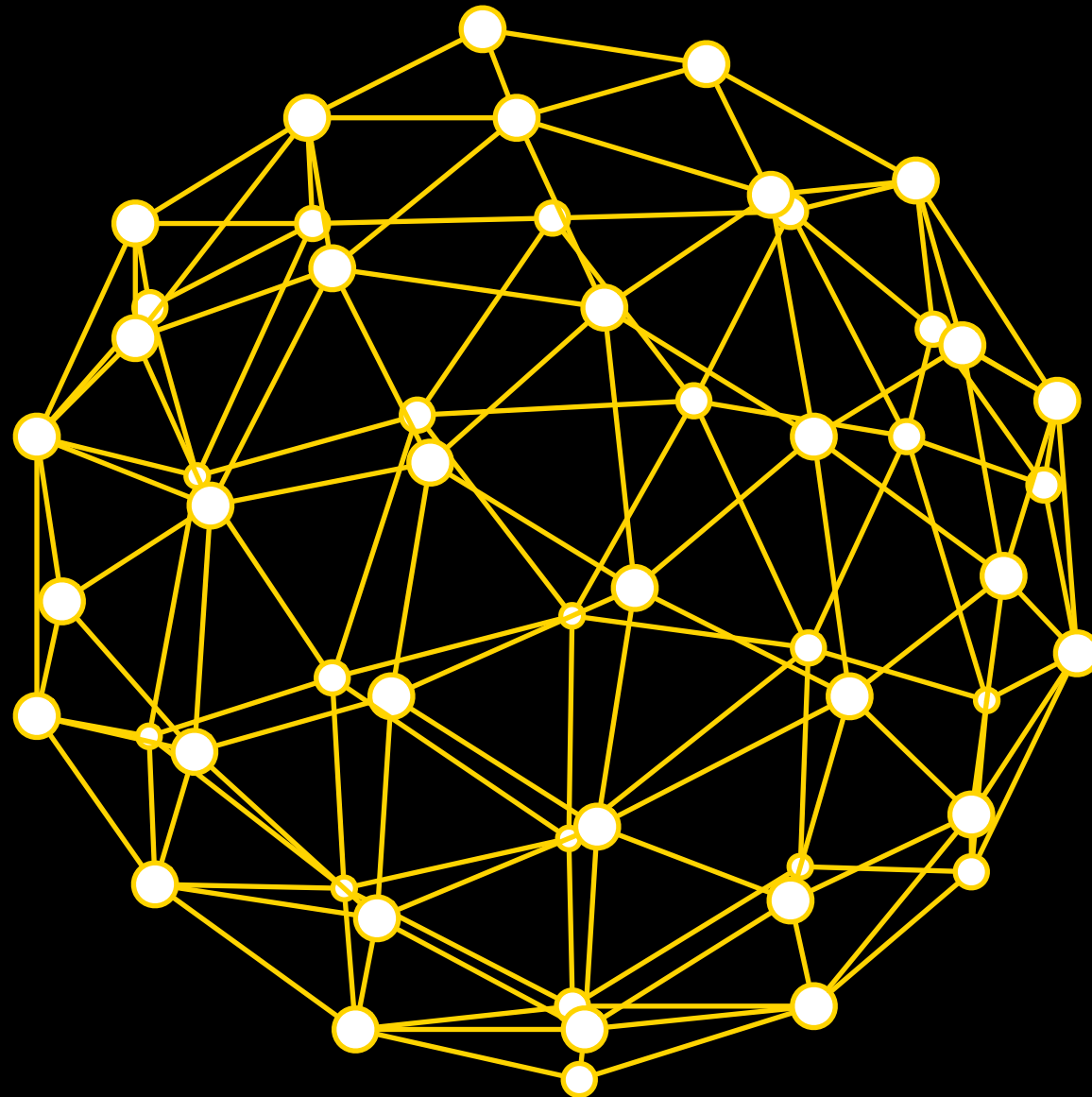


Nontrivial Topologies

Definition. *An underlying space is a set \mathcal{G} of (partially) directed graphs.*

The Model: Static Configurations

Definition. An underlying space is a set \mathcal{G} of (partially) directed graphs.



Triangulated Sphere

Definition. *An underlying space is a set \mathcal{G} of (partially) directed graphs.*

The Model: Static Configurations

Definition. *An underlying space is a set \mathcal{G} of (partially) directed graphs.*

The Model: Static Configurations

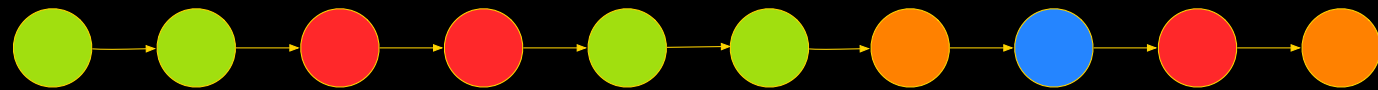
Definition. *An underlying space is a set \mathcal{G} of (partially) directed graphs.*

Definition. *Configurations are labelings of graphs in \mathcal{G} with elements of some “state set” S .*

The Model: Static Configurations

Definition. An underlying space is a set \mathcal{G} of (partially) directed graphs.

Definition. Configurations are labelings of graphs in \mathcal{G} with elements of some “state set” S .

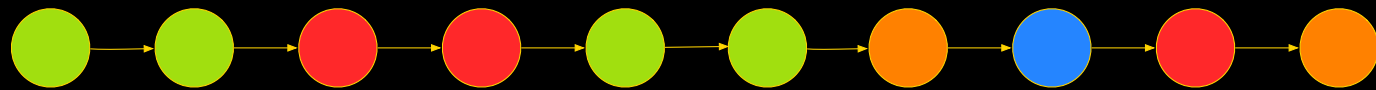


State labels represent the agent's internal states.

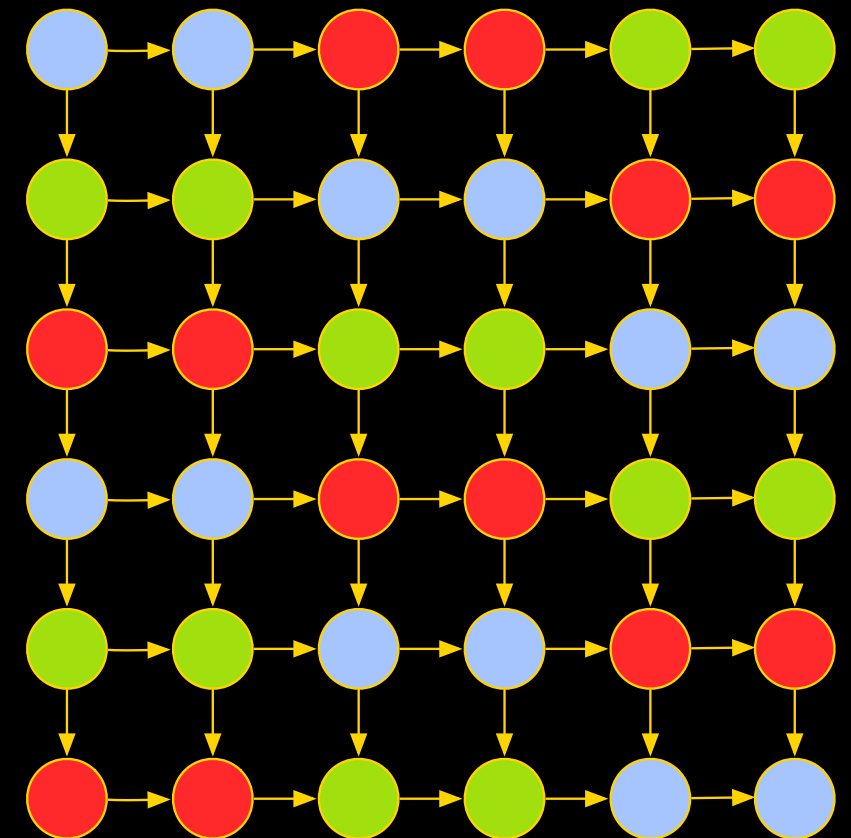
The Model: Static Configurations

Definition. An underlying space is a set \mathcal{G} of (partially) directed graphs.

Definition. Configurations are labelings of graphs in \mathcal{G} with elements of some “state set” S .



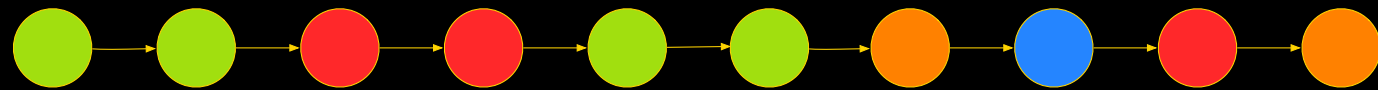
State labels represent the agent's internal states.



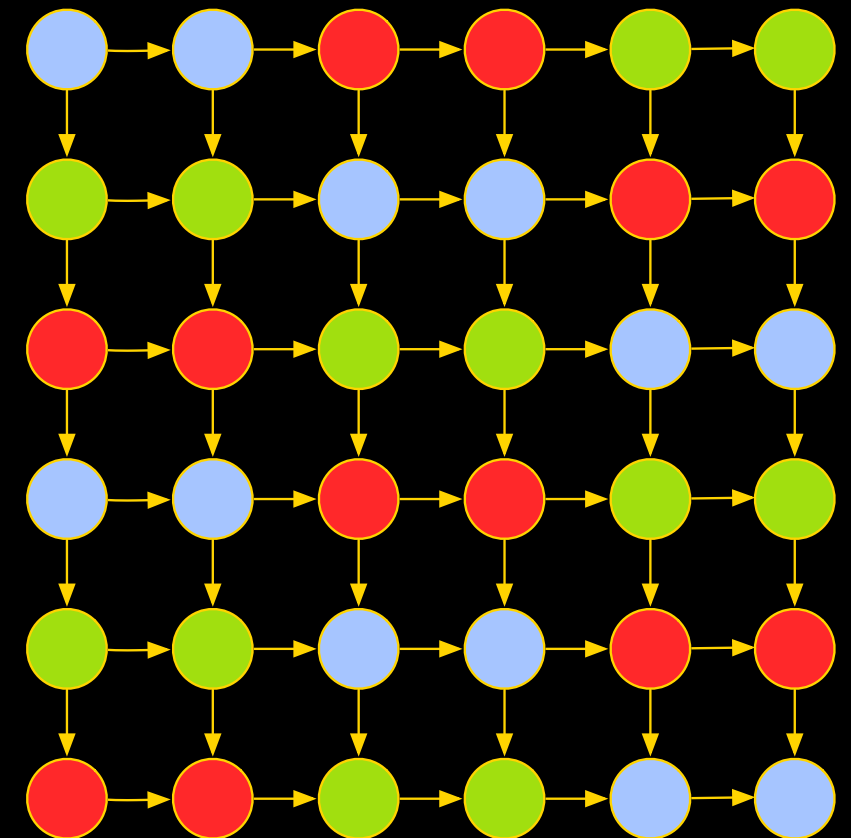
The Model: Static Configurations

Definition. An underlying space is a set \mathcal{G} of (partially) directed graphs.

Definition. Configurations are labelings of graphs in \mathcal{G} with elements of some “state set” S .



State labels represent the agent's internal states.

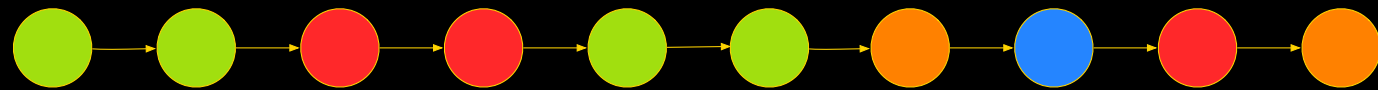


Definition. $B_r(a, X)$ is the local ball of radius r around agent a in configuration X .

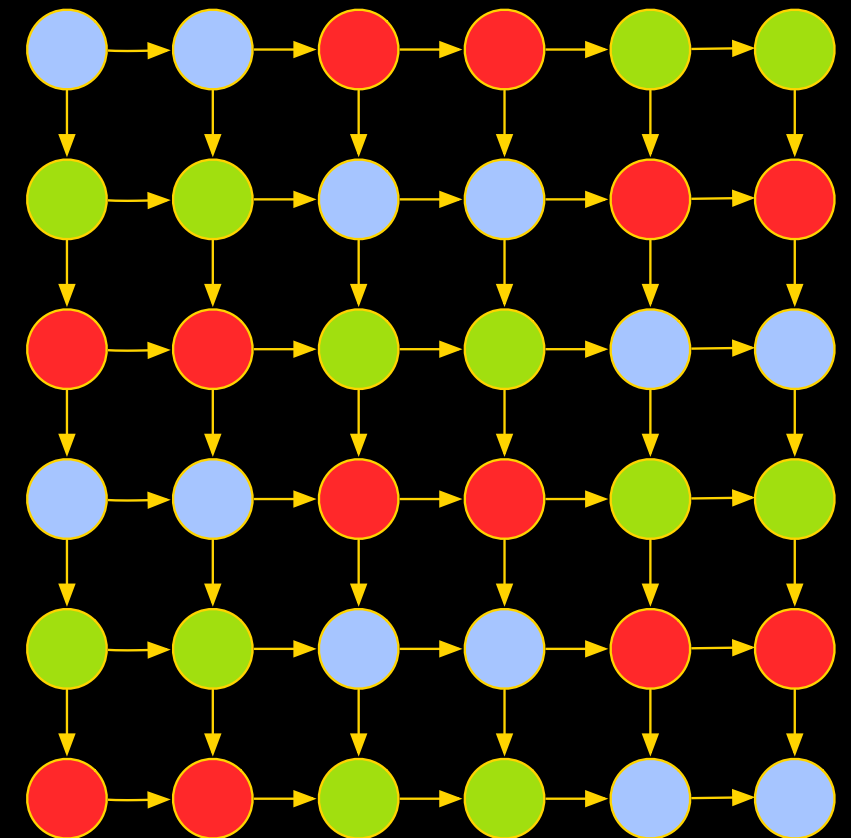
The Model: Static Configurations

Definition. An underlying space is a set \mathcal{G} of (partially) directed graphs.

Definition. Configurations are labelings of graphs in \mathcal{G} with elements of some “state set” S .



State labels represent the agent's internal states.



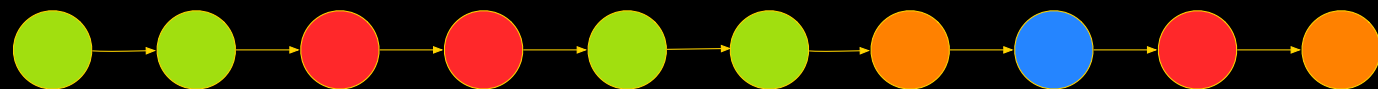
Definition. $B_r(a, X)$ is the local ball of radius r around agent a in configuration X .



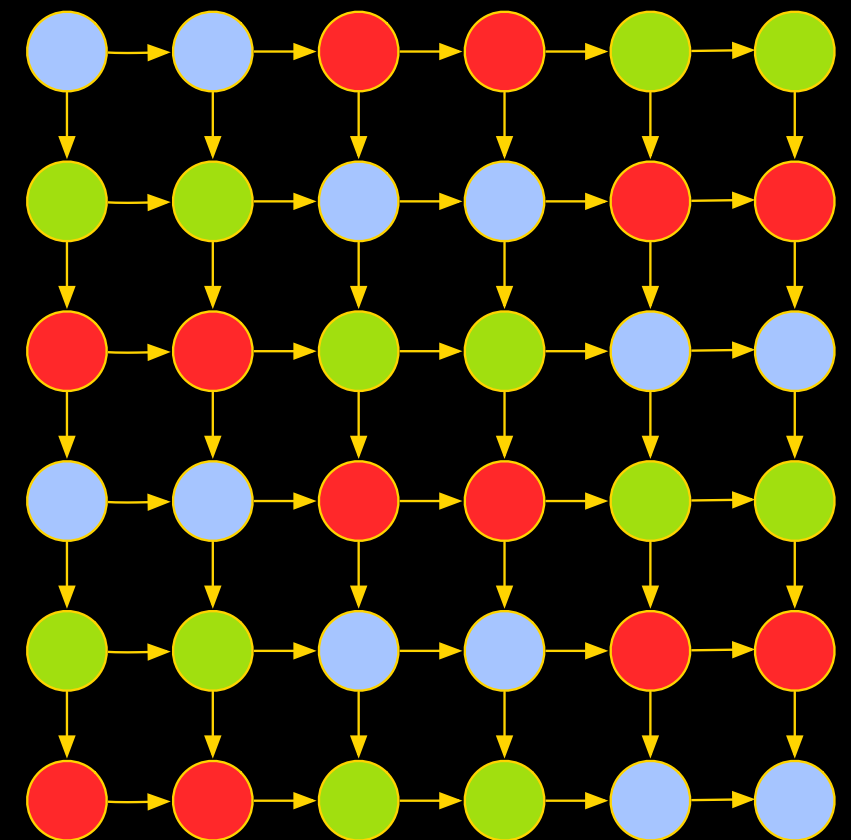
The Model: Static Configurations

Definition. An underlying space is a set \mathcal{G} of (partially) directed graphs.

Definition. Configurations are labelings of graphs in \mathcal{G} with elements of some “state set” S .



State labels represent the agent's internal states.



Definition. $B_r(a, X)$ is the local ball of radius r around agent a in configuration X .



The Model: Local Rule Dynamics

The Model: Local Rule Dynamics

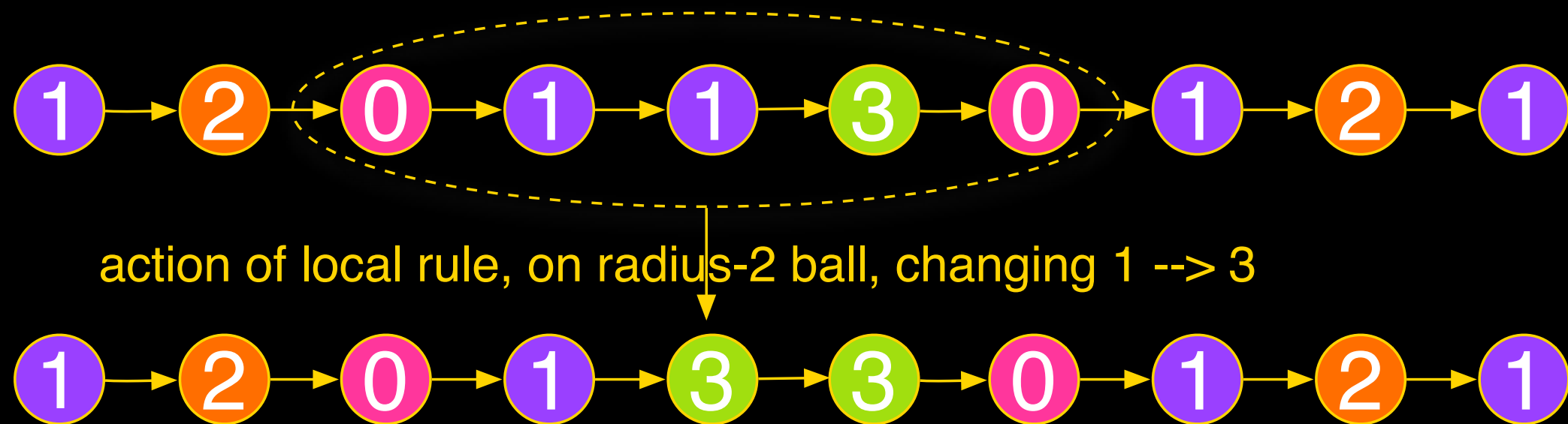
Definition. A radius R local rule is a look-up table that maps R -ball configurations to “updated state” choices. Formally,

$$F : \mathcal{B}_{r,S} \longrightarrow S.$$

The Model: Local Rule Dynamics

Definition. A radius R local rule is a look-up table that maps R -ball configurations to “updated state” choices. Formally,

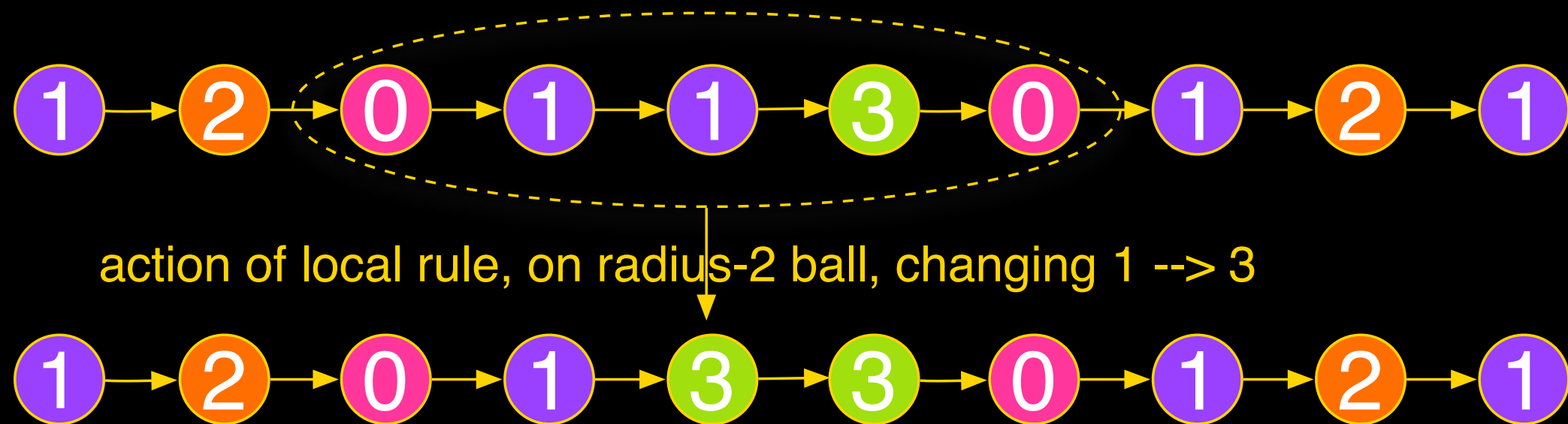
$$F : \mathcal{B}_{r,S} \longrightarrow S.$$



The Model: Local Rule Dynamics

Definition. A radius R local rule is a look-up table that maps R -ball configurations to “updated state” choices. Formally,

$$F : \mathcal{B}_{r,S} \longrightarrow S.$$



Thought of as “agent-based local programs”.

Sequences of agent calls can be synchronous or asynchronous.

Sequences of agent calls can be synchronous or asynchronous.

- Completely Synchronous: all agents called at all timesteps.

Sequences of agent calls can be synchronous or asynchronous.

- Completely Synchronous: all agents called at all timesteps.
- Completely asynchronous: only one agent called per timestep, and no other restriction, except liveness.

Sequences of agent calls can be synchronous or asynchronous.

- Completely Synchronous: all agents called at all timesteps.
- Completely asynchronous: only one agent called per timestep, and no other restriction, except liveness.

(liveness: no agent ever stops being called forever)

Sequences of agent calls can be synchronous or asynchronous.

- Completely Synchronous: all agents called at all timesteps.
- Completely asynchronous: only one agent called per timestep, and no other restriction, except liveness.

(liveness: no agent ever stops being called forever)

- k-bounded asynchronous: only one agent called per timestep, and no agent called $k+1$ times before all others called once.

Sequences of agent calls can be synchronous or asynchronous.

- Completely Synchronous: all agents called at all timesteps.
- Completely asynchronous: only one agent called per timestep, and no other restriction, except liveness.

(liveness: no agent ever stops being called forever)

- k-bounded asynchronous: only one agent called per timestep, and no agent called $k+1$ times before all others called once.

Definition. *A size- n call sequence is a call sequence acting on an n -agent configuration. A timing model is a set of call sequences for each size n .*

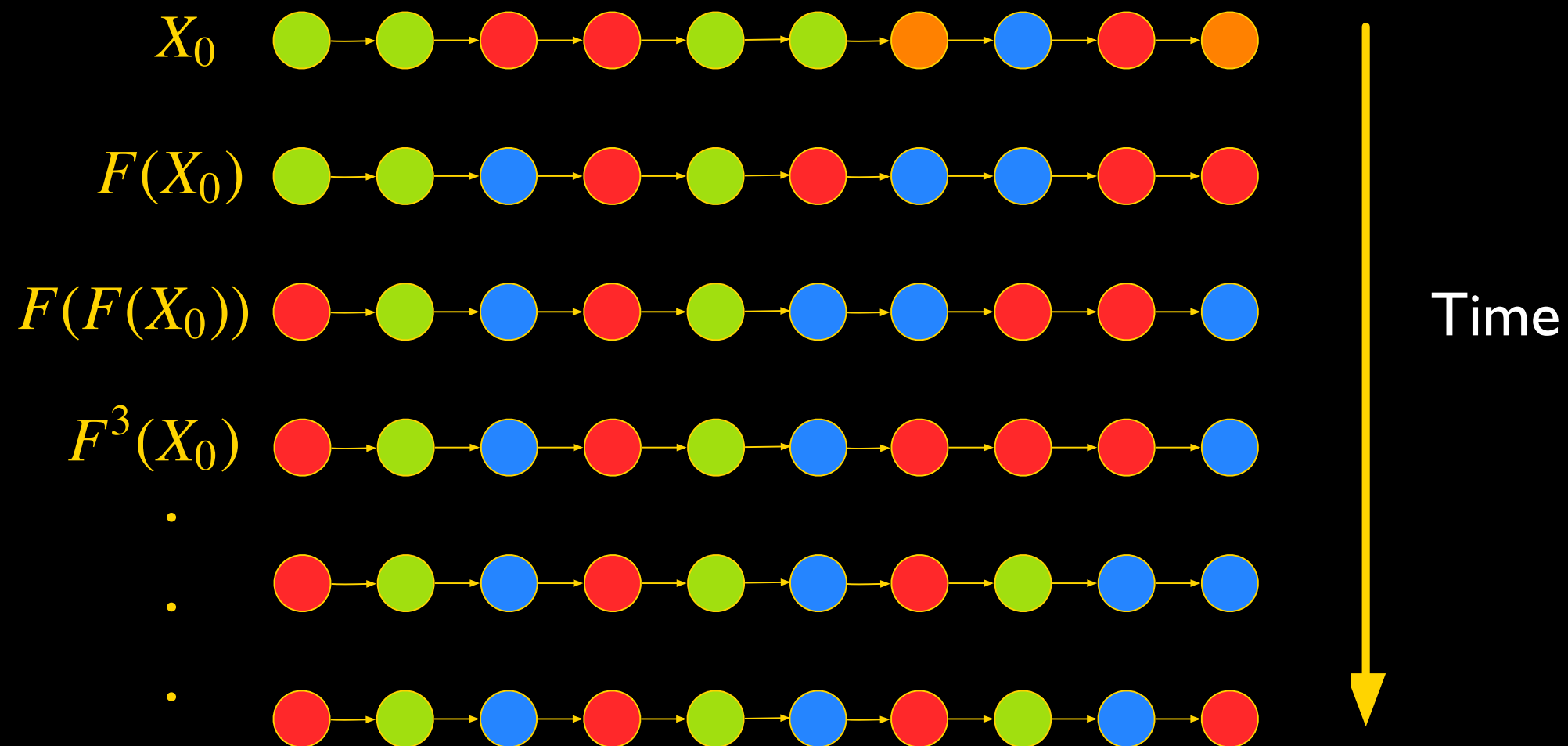
The Model: Local Rule Dynamics

The Model: Local Rule Dynamics

Definition. *The trajectory $\{F_s^n(X_0)\}$ is generated by iterating F from the initial condition X_0 , calling agents as specified by call sequence s .*

The Model: Local Rule Dynamics

Definition. The trajectory $\{F_s^n(X_0)\}$ is generated by iterating F from the initial condition X_0 , calling agents as specified by call sequence s .



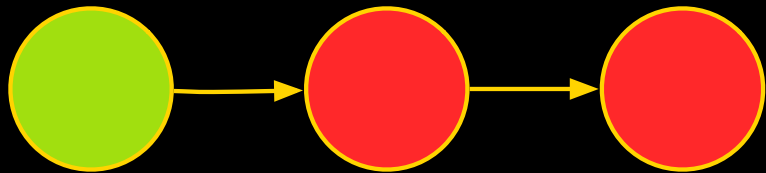
The Model: Patterns

The Model: Patterns

Definition. *A pattern is a set of configurations.*

The Model: Patterns

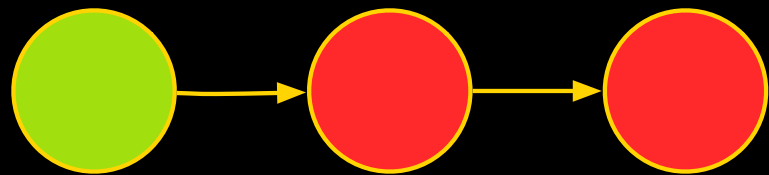
Definition. *A pattern is a set of configurations.*



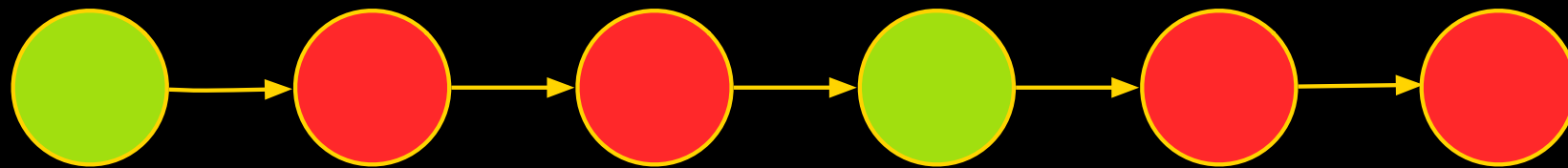
Repeat Patterns

The Model: Patterns

Definition. *A pattern is a set of configurations.*

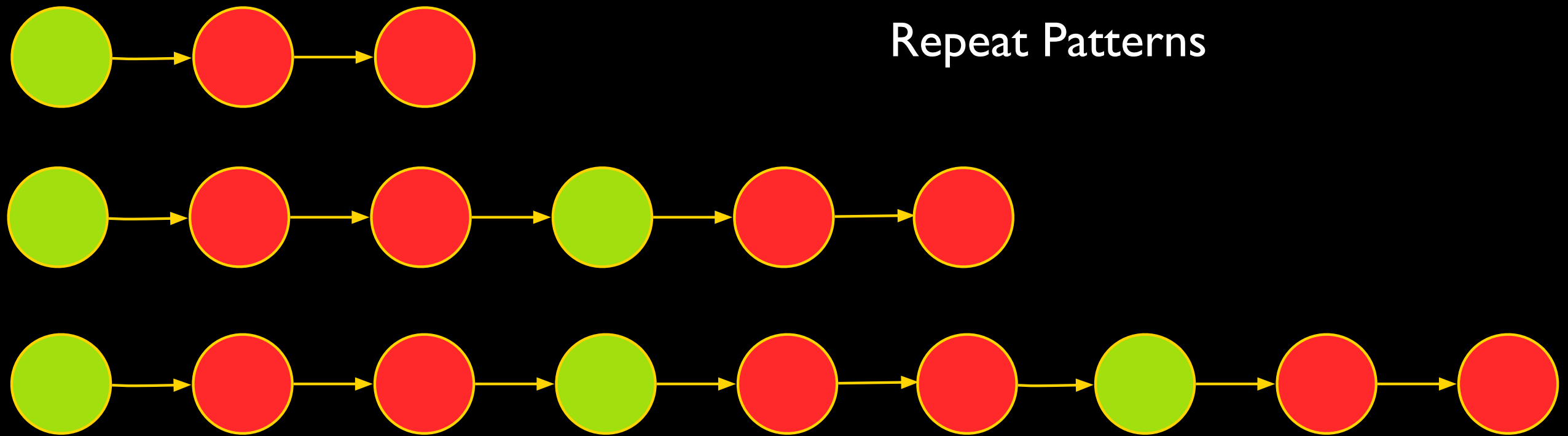


Repeat Patterns



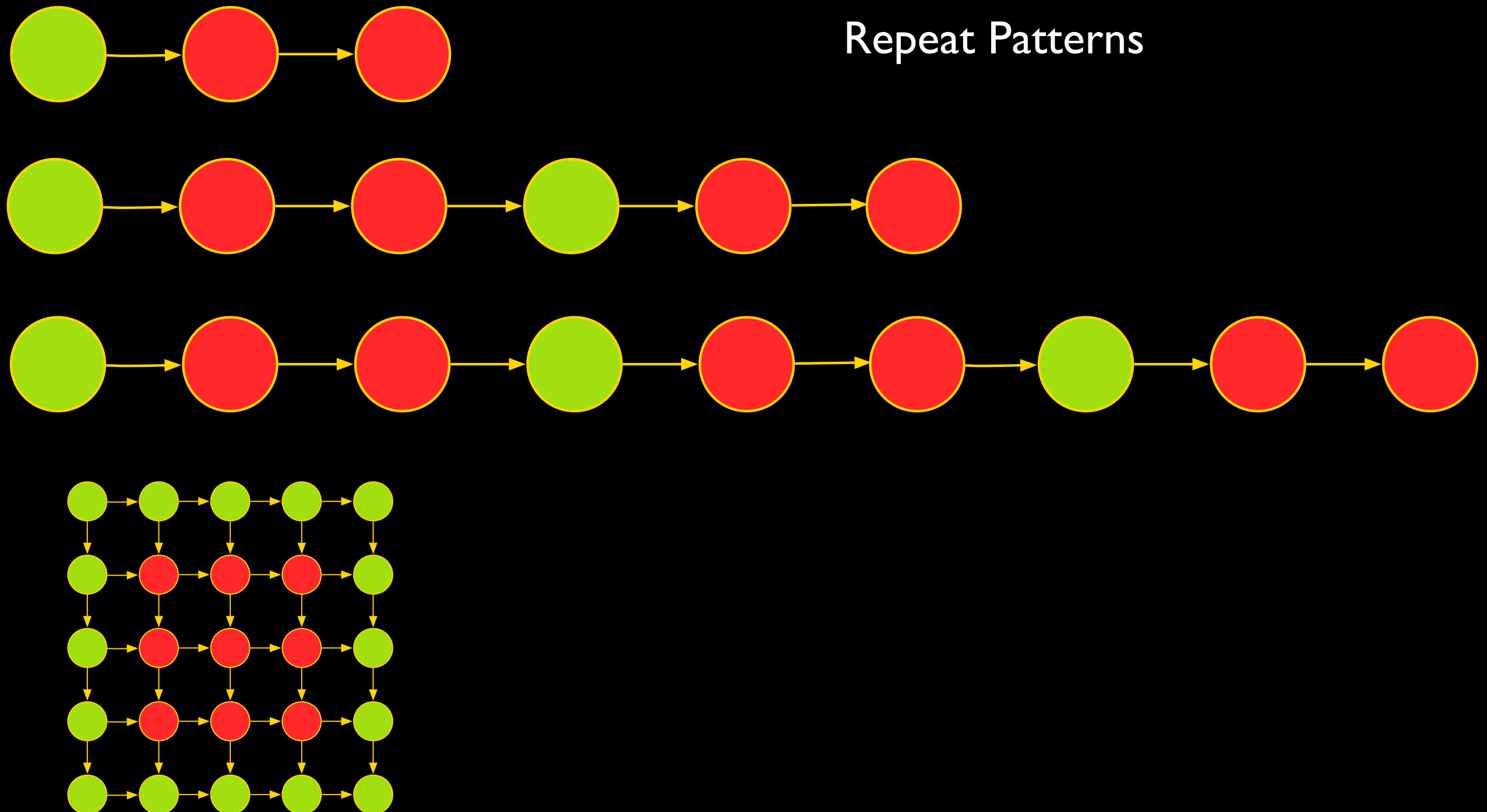
The Model: Patterns

Definition. *A pattern is a set of configurations.*



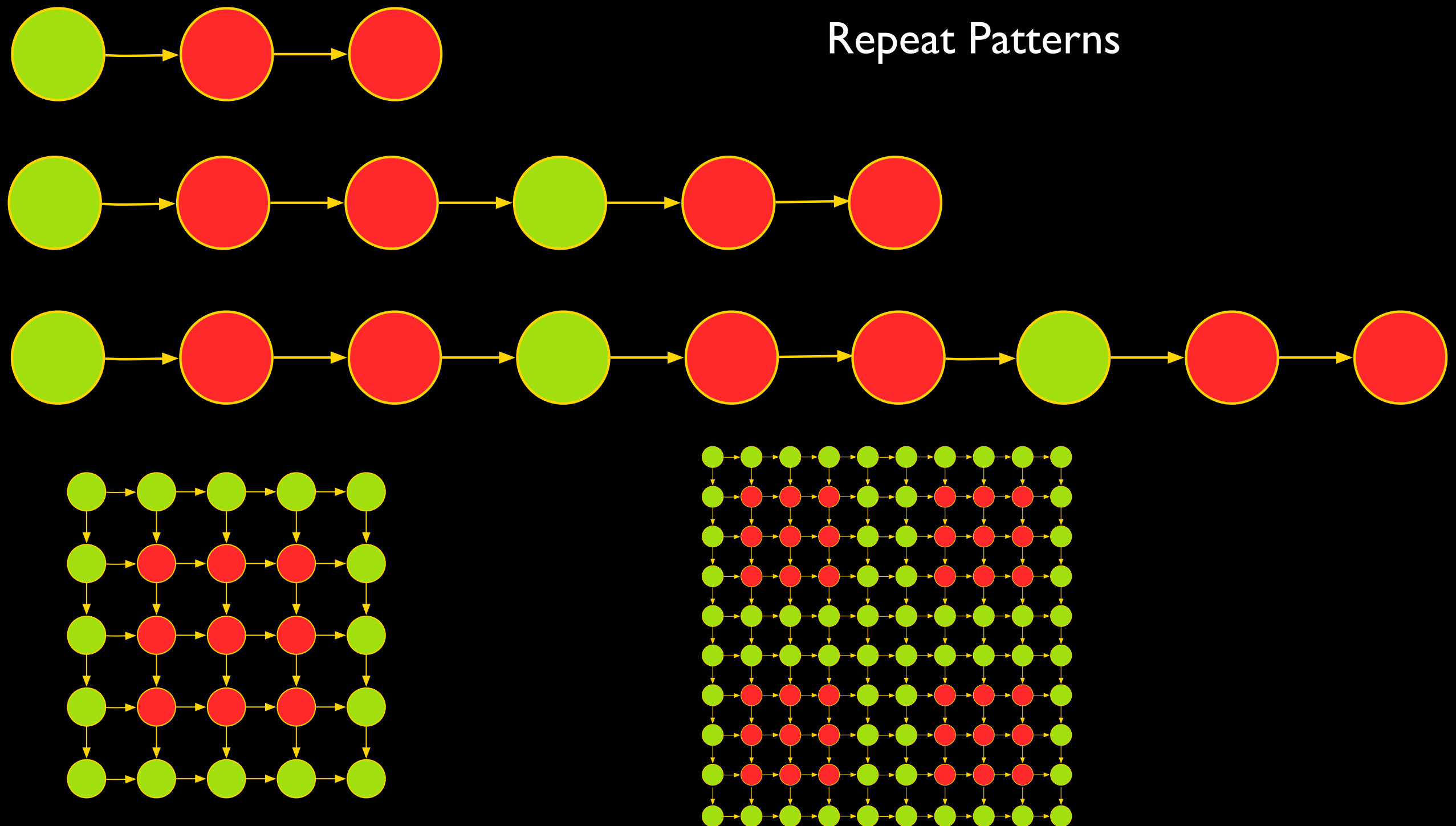
The Model: Patterns

Definition. *A pattern is a set of configurations.*



The Model: Patterns

Definition. *A pattern is a set of configurations.*



The Model: Patterns

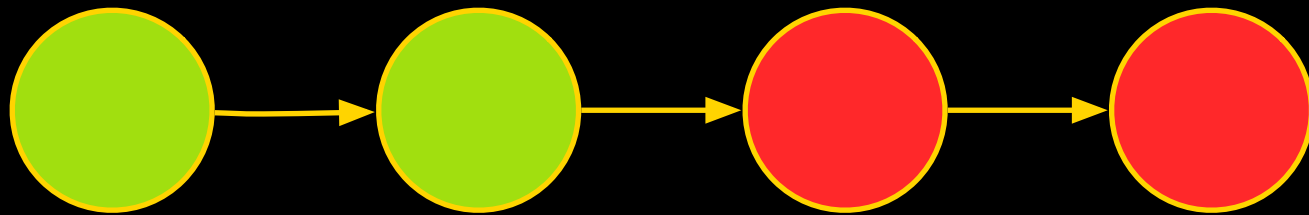
The Model: Patterns

Definition. *A pattern is a set of configurations.*

The Model: Patterns

Definition. *A pattern is a set of configurations.*

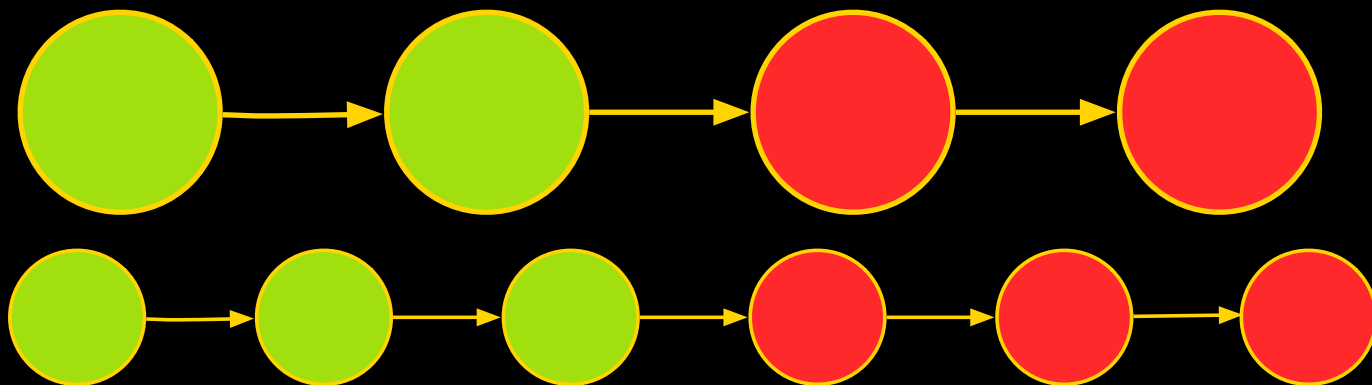
Proportionate Patterns



The Model: Patterns

Definition. *A pattern is a set of configurations.*

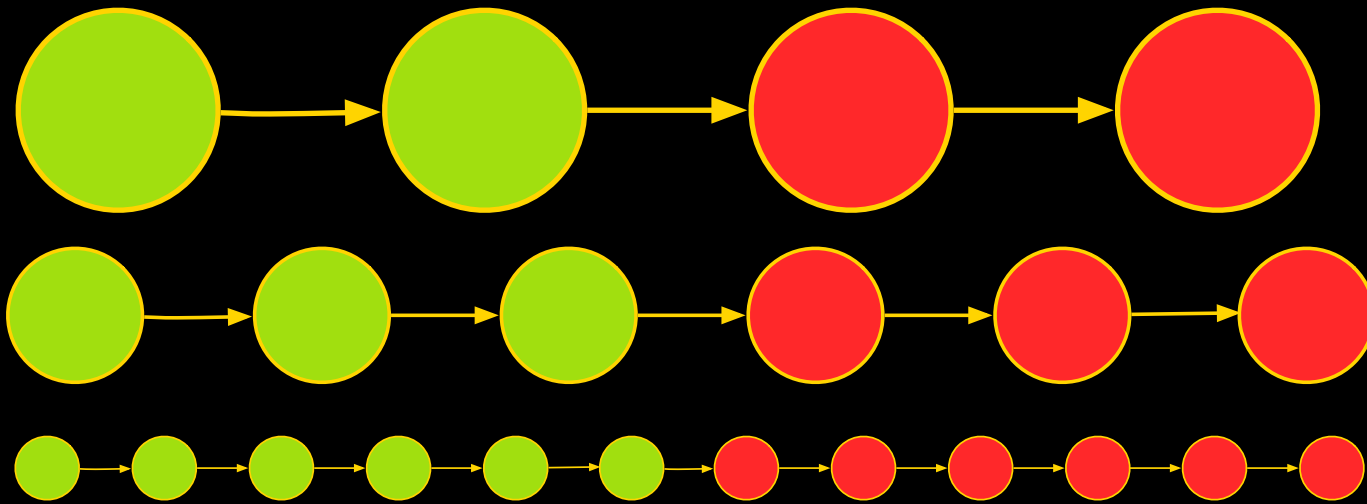
Proportionate Patterns



The Model: Patterns

Definition. *A pattern is a set of configurations.*

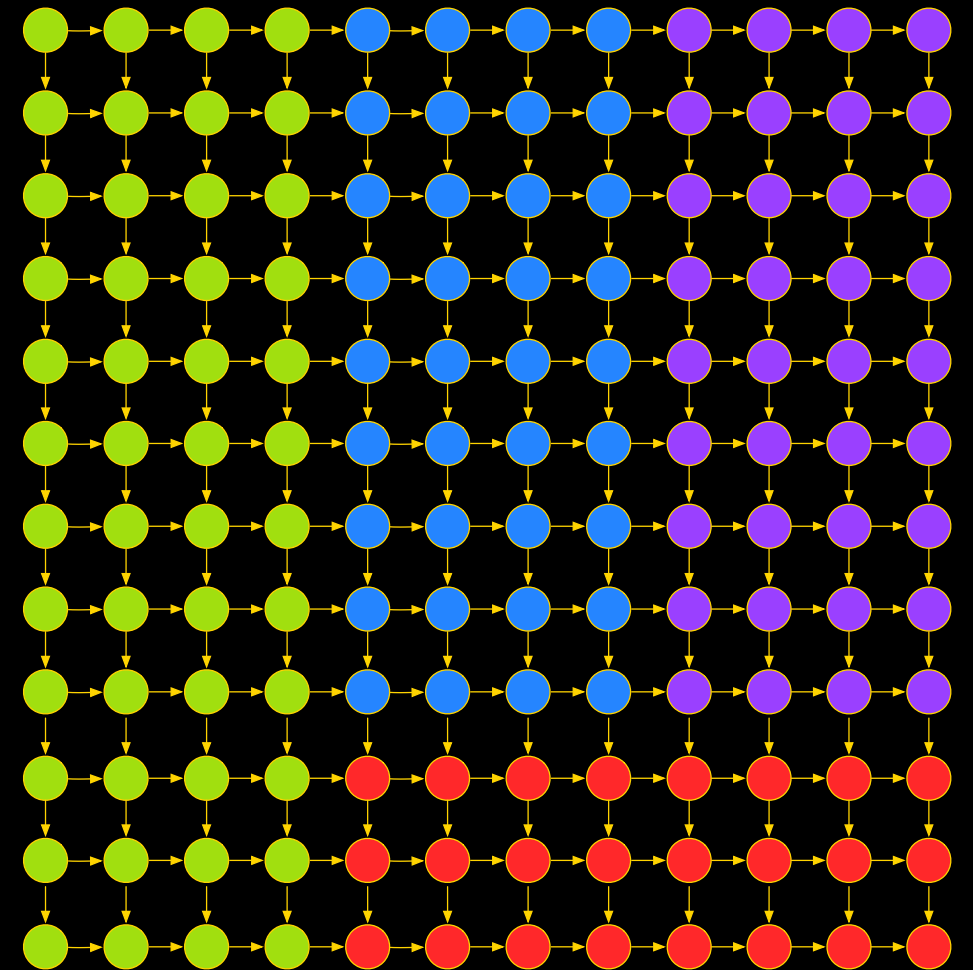
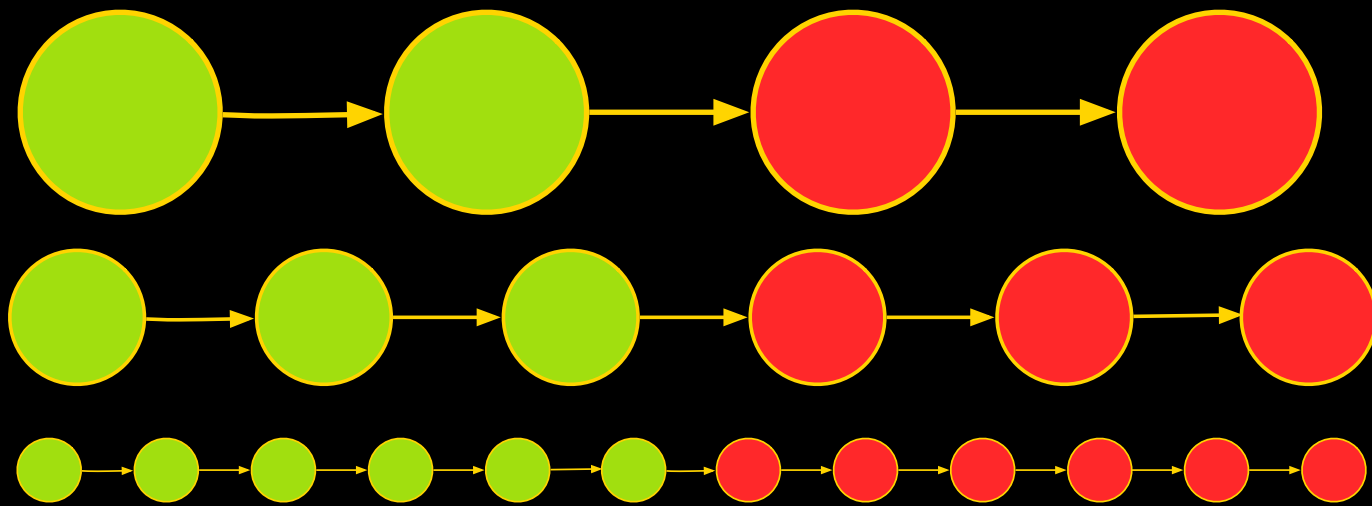
Proportionate Patterns



The Model: Patterns

Definition. *A pattern is a set of configurations.*

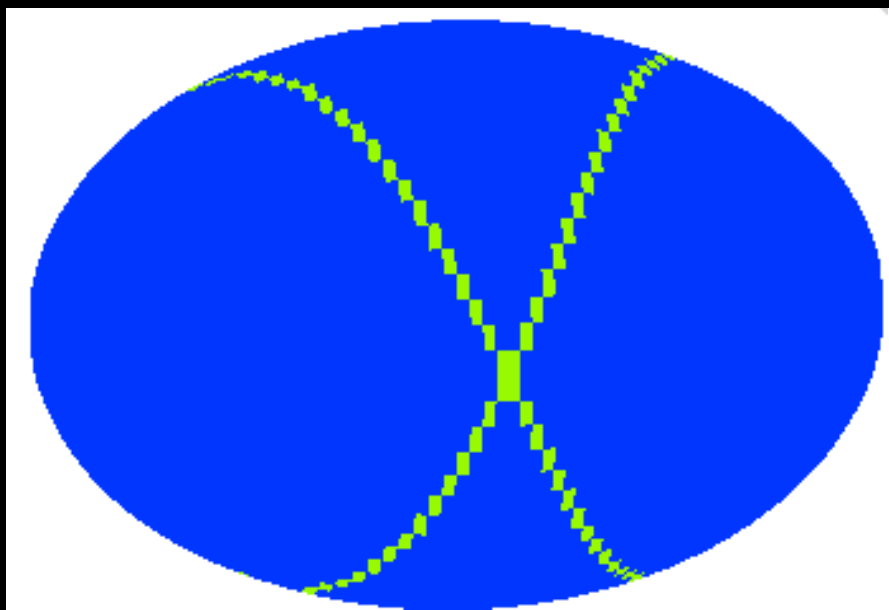
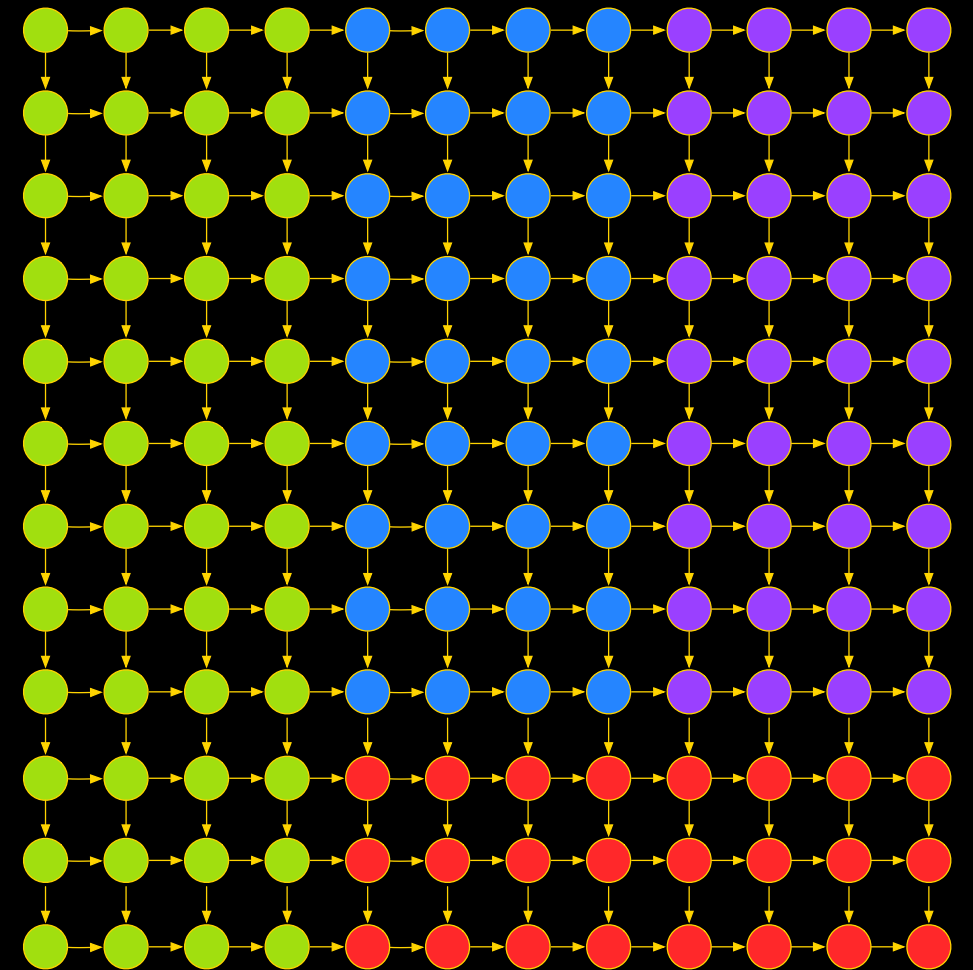
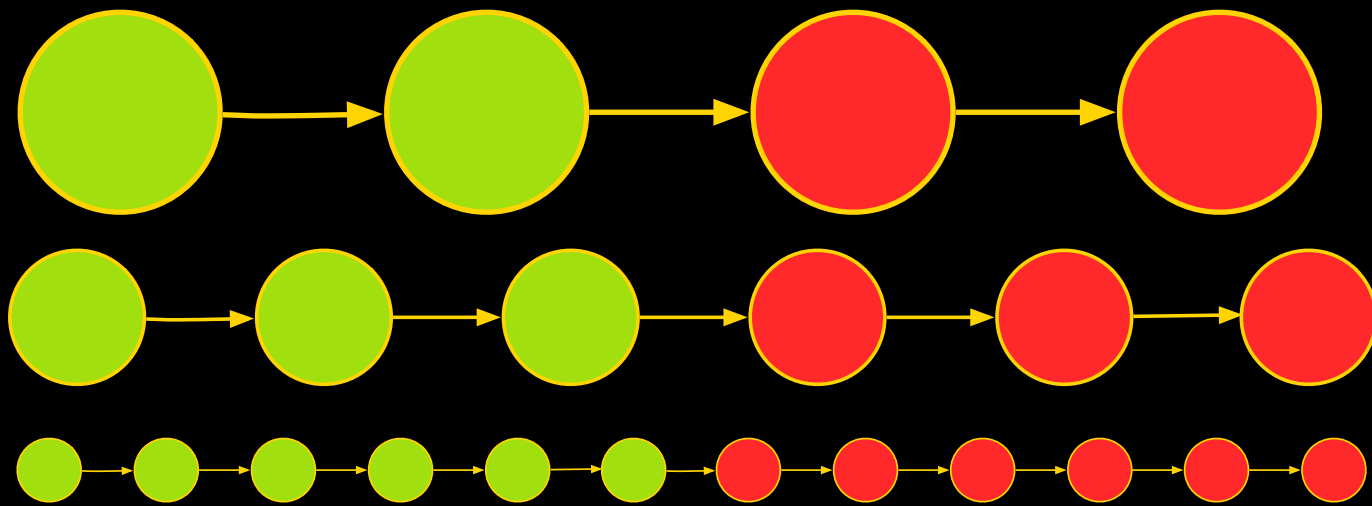
Proportionate Patterns



The Model: Patterns

Definition. *A pattern is a set of configurations.*

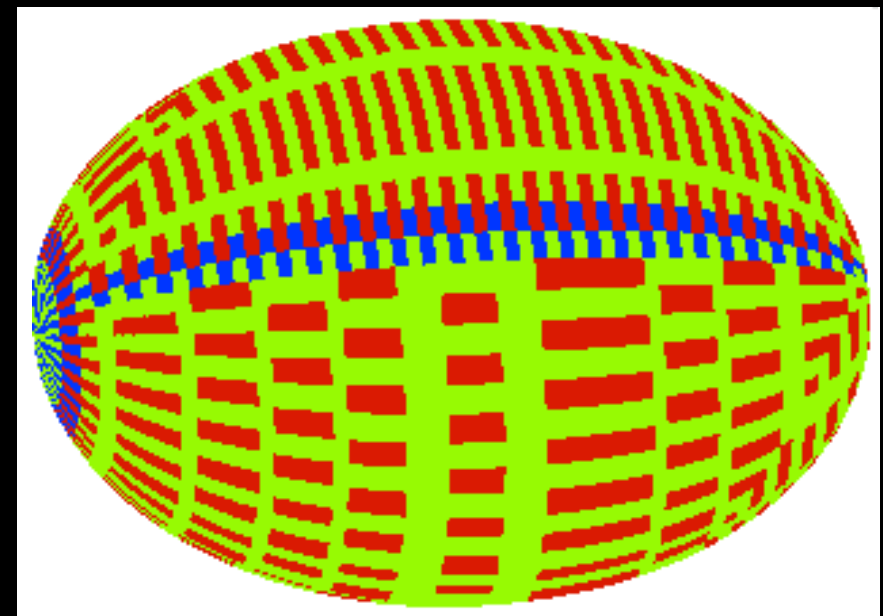
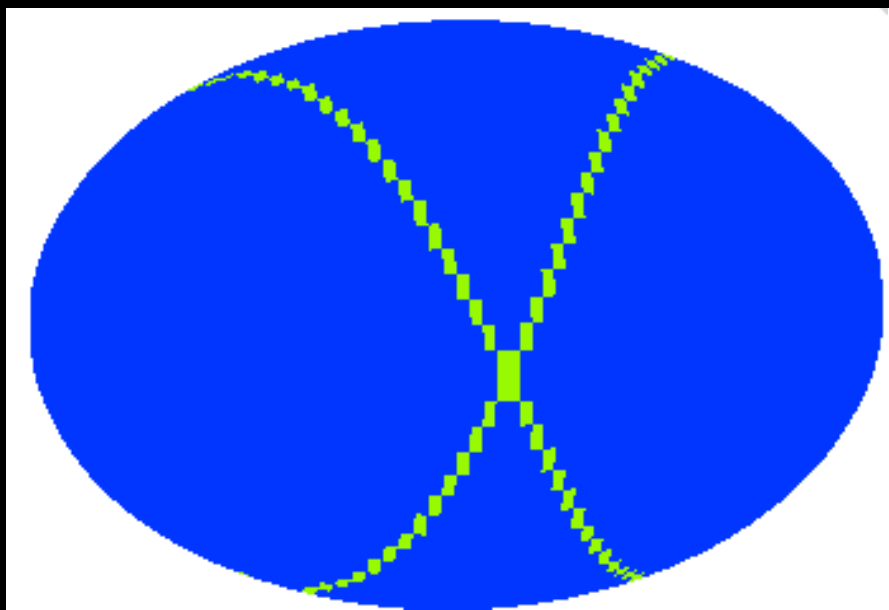
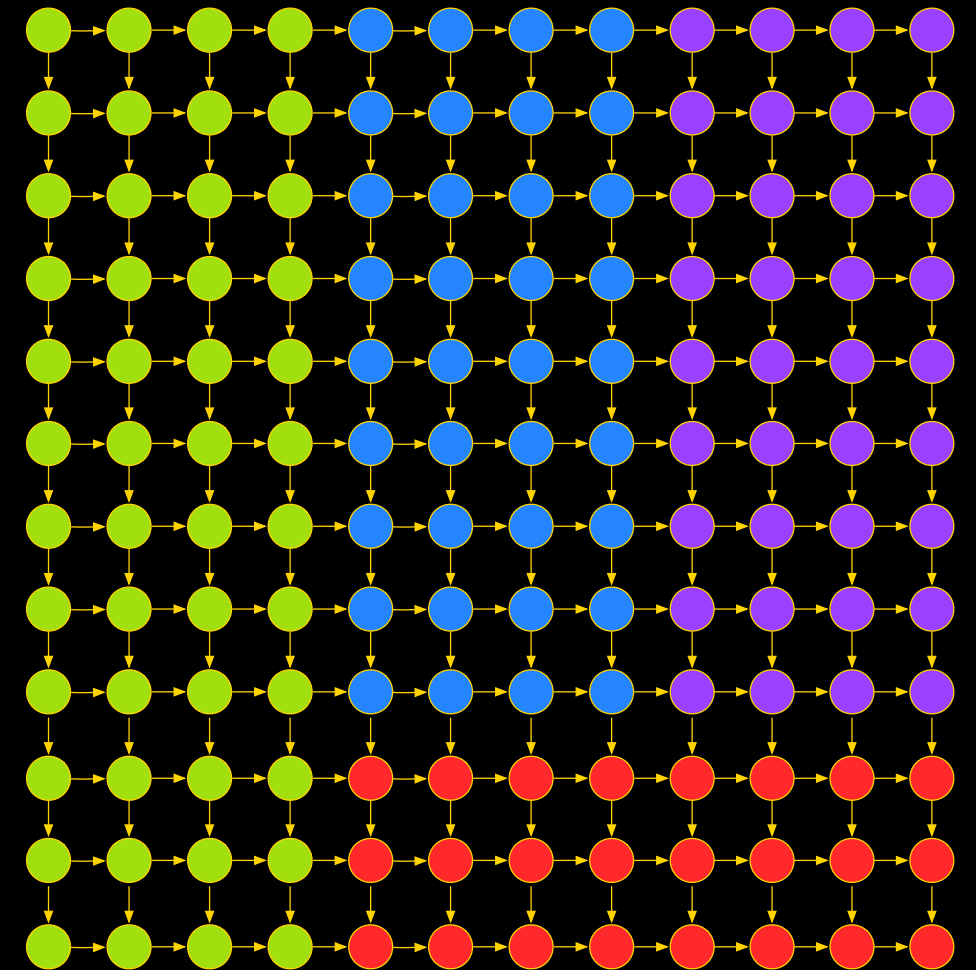
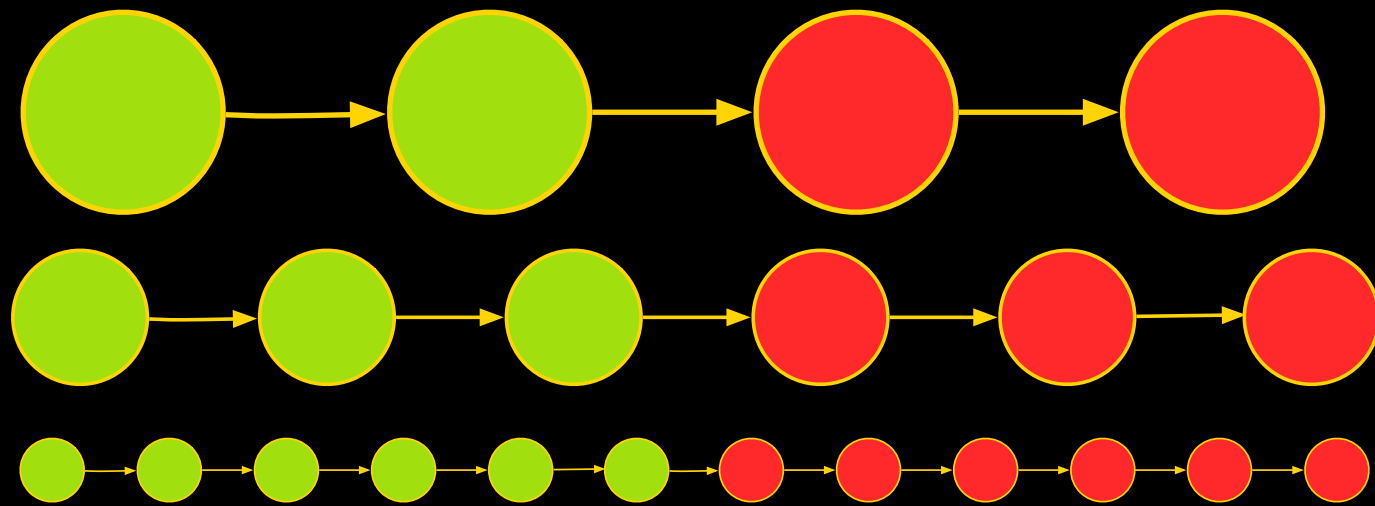
Proportionate Patterns



The Model: Patterns

Definition. *A pattern is a set of configurations.*

Proportionate Patterns



Other patterns

Definition. *A local rule F is a robust solution to pattern T in timing model \mathcal{S} if,*

The Model: Robust Solutions

Definition. *A local rule F is a robust solution to pattern T in timing model \mathcal{S} if,*

The Model: Robust Solutions

Definition. *A local rule F is a robust solution to pattern T in timing model \mathcal{S} if, for all sizes n*

The Model: Robust Solutions

Definition. *A local rule F is a robust solution to pattern T in timing model \mathcal{S} if, for all sizes n and all configurations X of size n*

The Model: Robust Solutions

Definition. *A local rule F is a robust solution to pattern T in timing model \mathcal{S} if, for all sizes n and all configurations X of size n and all call sequences on X*

The Model: Robust Solutions

Definition. A local rule F is a robust solution to pattern T in timing model \mathcal{S} if, for all sizes n and all configurations X of size n and all call sequences on X

$$\lim_{n \rightarrow \infty} F_s^n(X)$$

The Model: Robust Solutions

Definition. A local rule F is a robust solution to pattern T in timing model \mathcal{S} if, for all sizes n and all configurations X of size n and all call sequences on X

$$\lim_{n \rightarrow \infty} F_s^n(X)$$

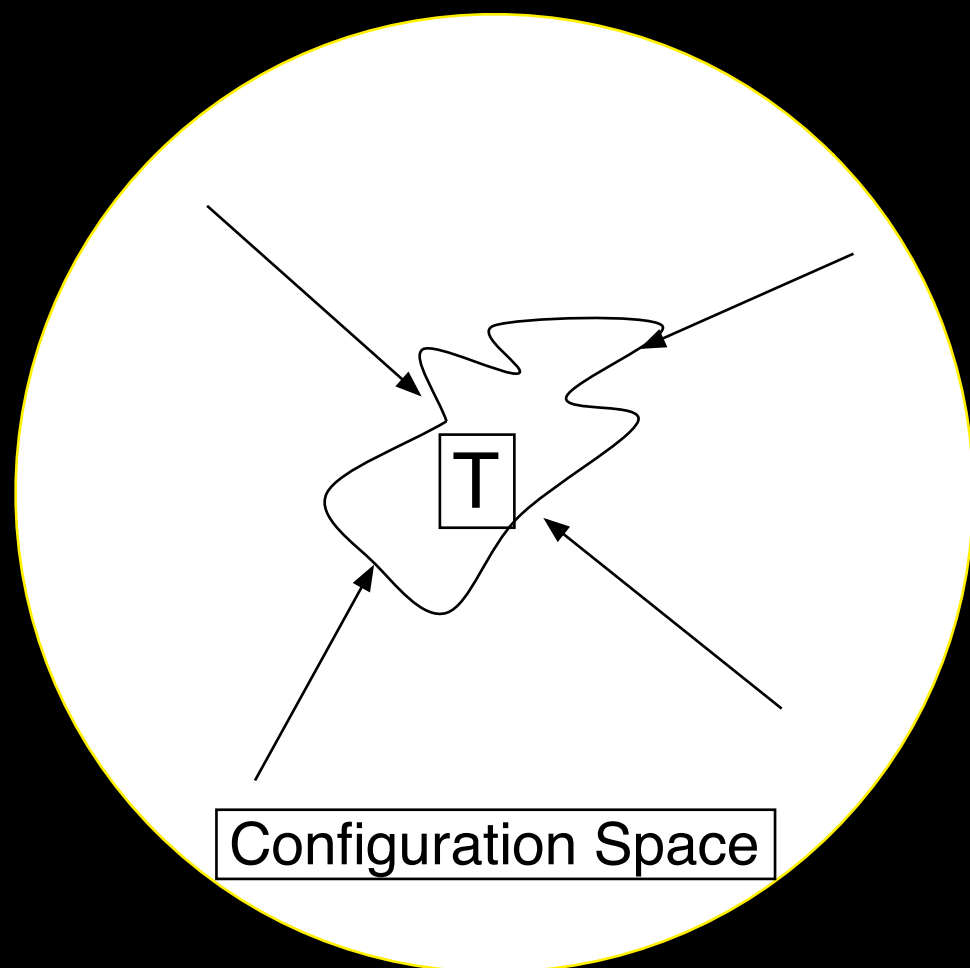
whenever T contains one more instances of size n .

The Model: Robust Solutions

Definition. A local rule F is a robust solution to pattern T in timing model \mathcal{S} if, for all sizes n and all configurations X of size n and all call sequences on X

$$\lim_{n \rightarrow \infty} F_s^n(X)$$

whenever T contains one more instances of size n .

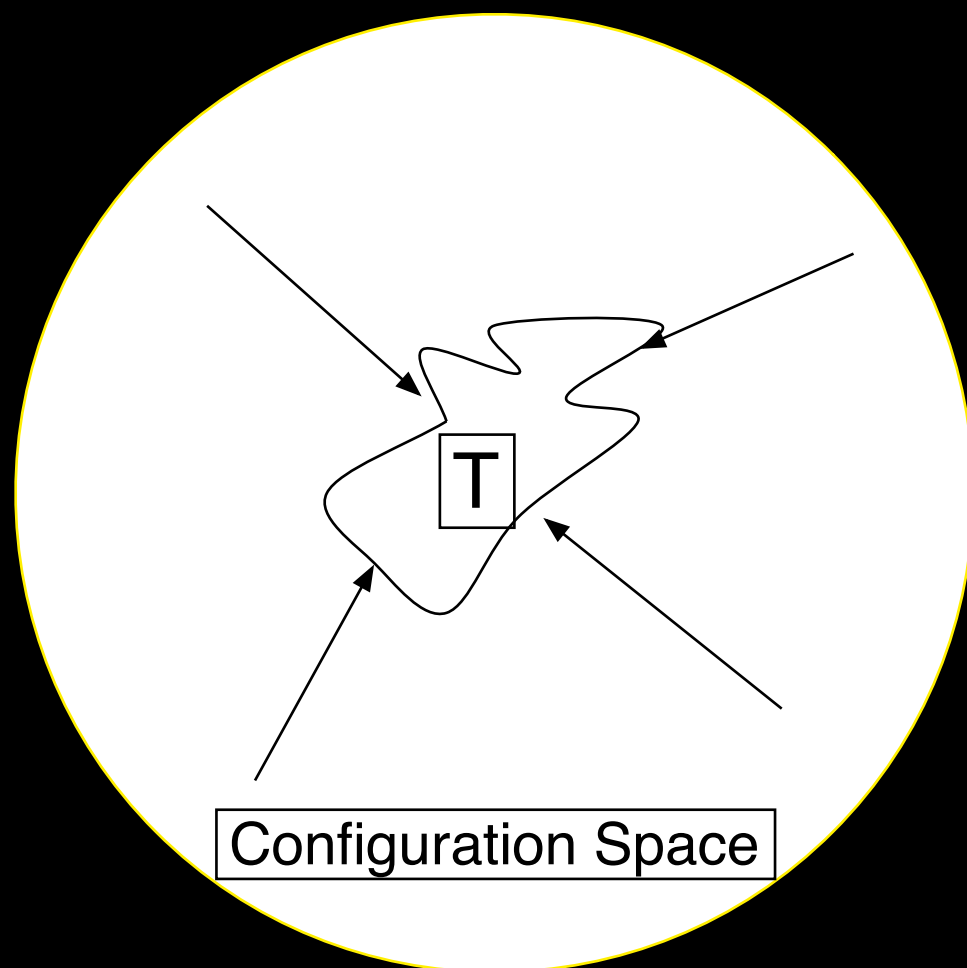


The Model: Robust Solutions

Definition. A local rule F is a robust solution to pattern T in timing model \mathcal{S} if, for all sizes n and all configurations X of size n and all call sequences on X

$$\lim_{n \rightarrow \infty} F_s^n(X)$$

whenever T contains one more instances of size n .



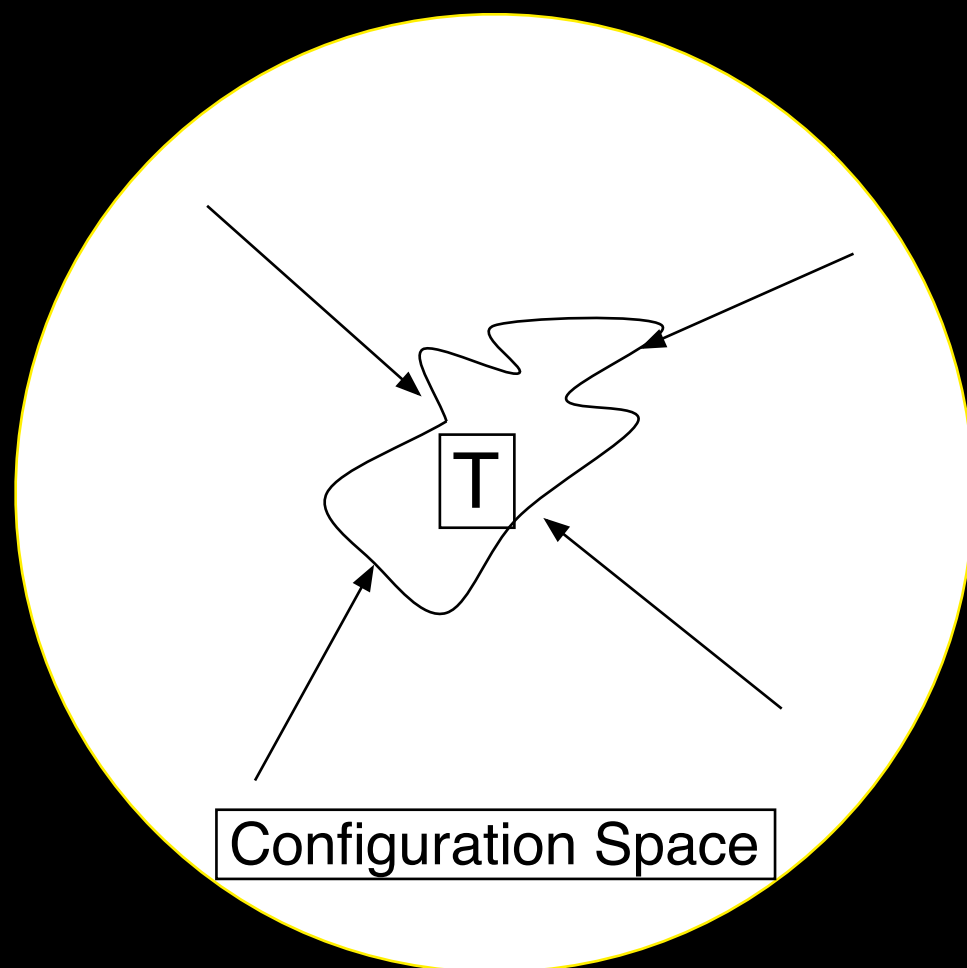
\mathcal{G} Underlying Geometry

The Model: Robust Solutions

Definition. A local rule F is a robust solution to pattern T in timing model \mathcal{S} if, for all sizes n and all configurations X of size n and all call sequences on X

$$\lim_{n \rightarrow \infty} F_s^n(X)$$

whenever T contains one more instances of size n .



\mathcal{G} Underlying Geometry

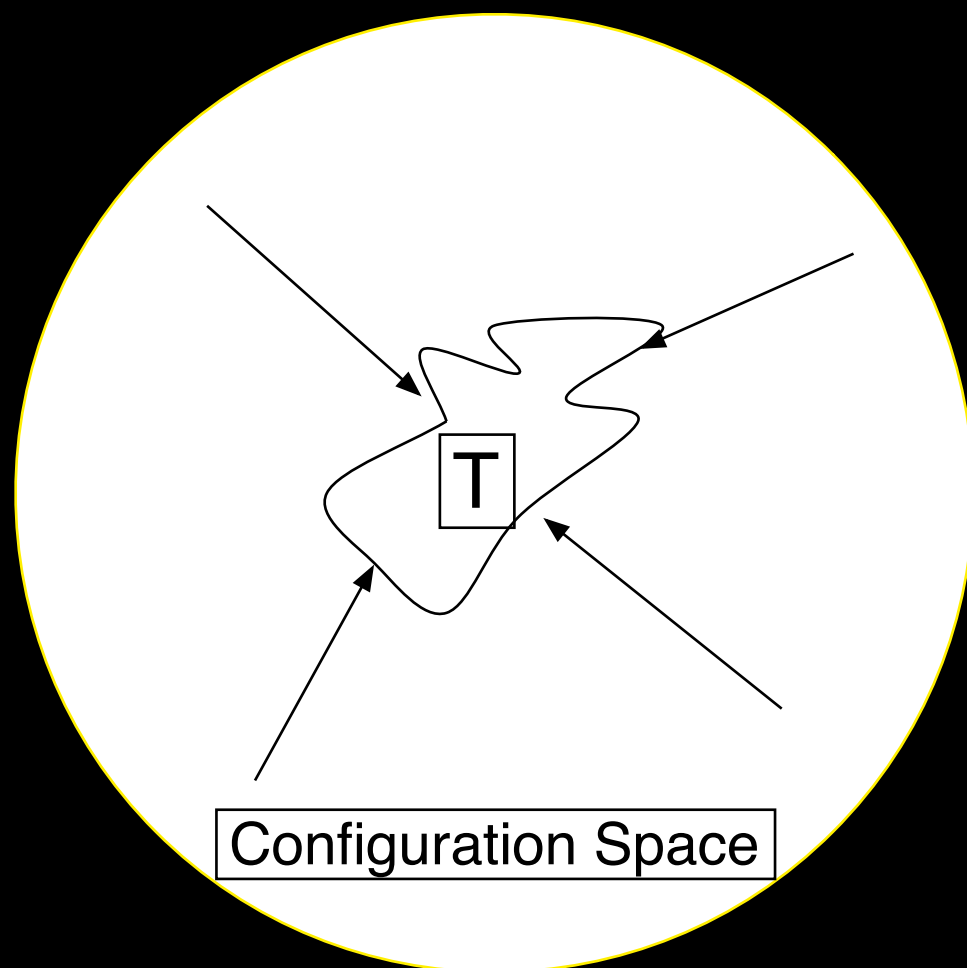
\mathcal{S} State set of size m

The Model: Robust Solutions

Definition. A local rule F is a robust solution to pattern T in timing model \mathcal{S} if, for all sizes n and all configurations X of size n and all call sequences on X

$$\lim_{n \rightarrow \infty} F_s^n(X)$$

whenever T contains one more instances of size n .



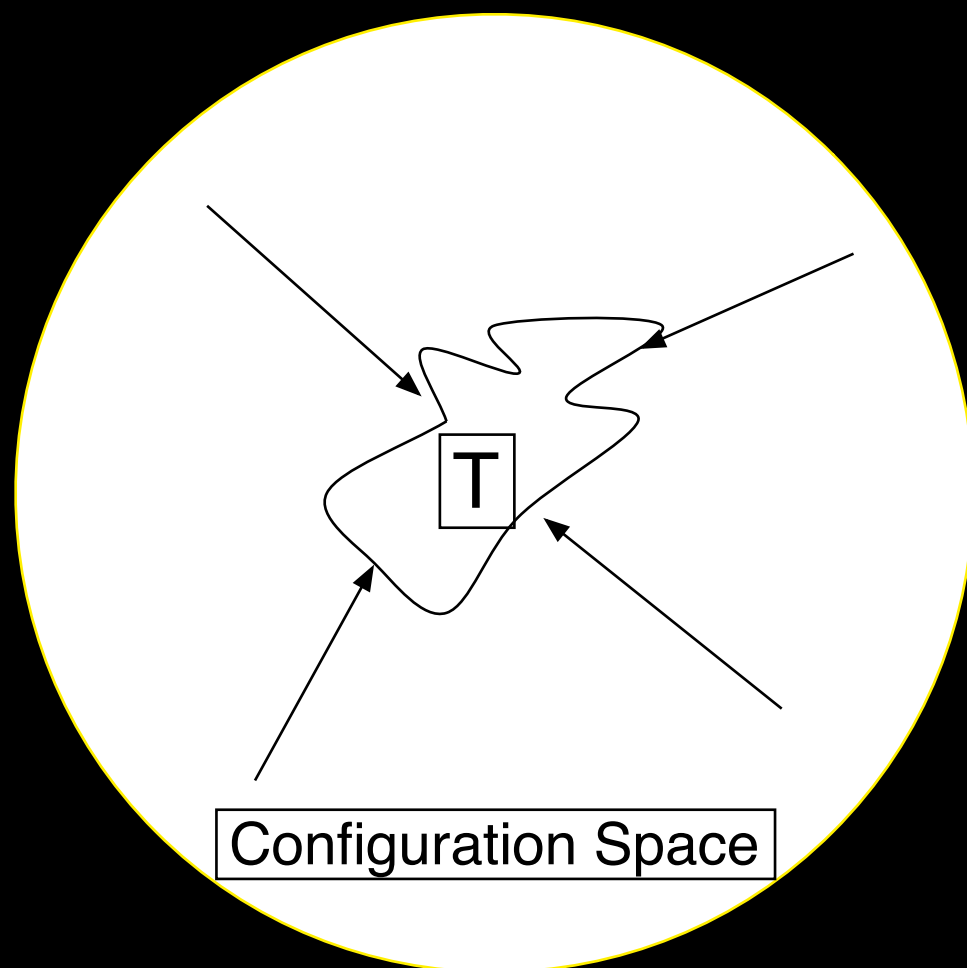
- \mathcal{G} Underlying Geometry
- \mathcal{S} State set of size m
- R Communication radius

The Model: Robust Solutions

Definition. A local rule F is a robust solution to pattern T in timing model \mathcal{S} if, for all sizes n and all configurations X of size n and all call sequences on X

$$\lim_{n \rightarrow \infty} F_s^n(X)$$

whenever T contains one more instances of size n .



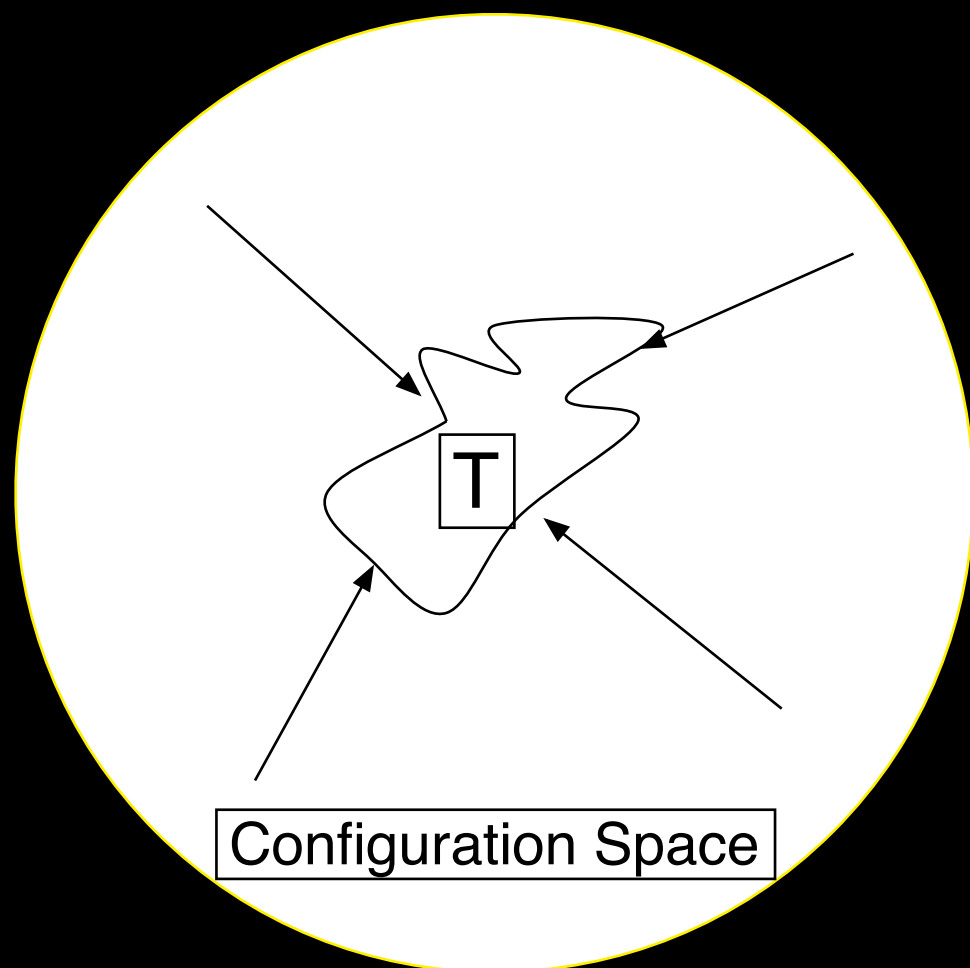
- \mathcal{G} Underlying Geometry
- \mathcal{S} State set of size m
- R Communication radius
- \mathcal{S} Timing model

The Model: Robust Solutions

Definition. A local rule F is a robust solution to pattern T in timing model \mathcal{S} if, for all sizes n and all configurations X of size n and all call sequences on X

$$\lim_{n \rightarrow \infty} F_s^n(X)$$

whenever T contains one more instances of size n .



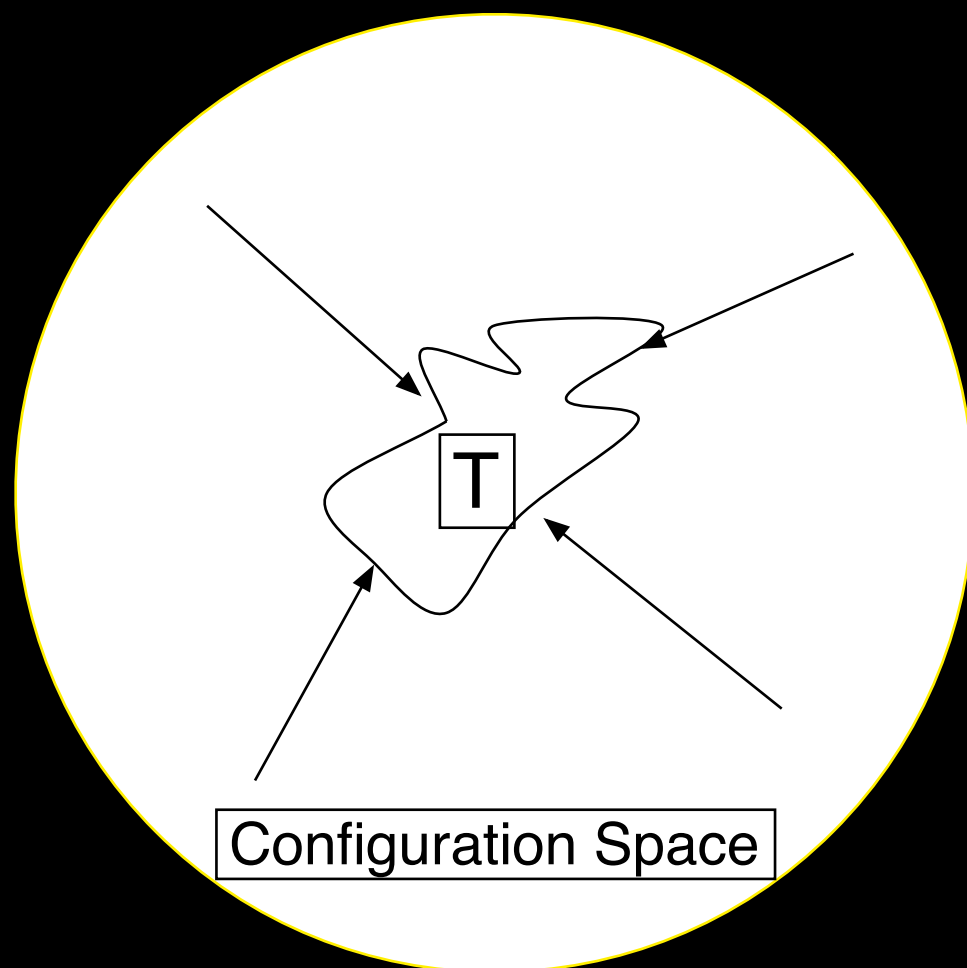
- \mathcal{G} Underlying Geometry
- \mathcal{S} State set of size m
- R Communication radius
- \mathcal{S} Timing model
- T Pattern

The Model: Robust Solutions

Definition. A local rule F is a robust solution to pattern T in timing model \mathcal{S} if, for all sizes n and all configurations X of size n and all call sequences on X

$$\lim_{n \rightarrow \infty} F_s^n(X)$$

whenever T contains one more instances of size n .



Configuration Space

\mathcal{G} Underlying Geometry

\mathcal{S} State set of size m

R Communication radius

\mathcal{S} Timing model

T Pattern

$\implies F$ Robust Solution

Disorder to Order

Other models: Amorphous Computing

Other models: Flocking & Sorting

Other models: Developmental Biology

Other models: Reconfigurable Robots

Other models: Pattern and Task Abstractions