

An aerial photograph of a vast mountain range. The foreground shows a valley with a winding river and patchwork fields. The middle ground features rolling hills and ridges. In the background, a prominent mountain peak is covered in snow, with other peaks visible in the distance under a hazy sky. The text "Allocating the Budget" is overlaid in white on the center of the image.

# Allocating the Budget

# Allocating the Budget

Once funded, how will money be spent?

Examples:

- Allocate funds across several subwatersheds
- Determine how much funding should go to various activities

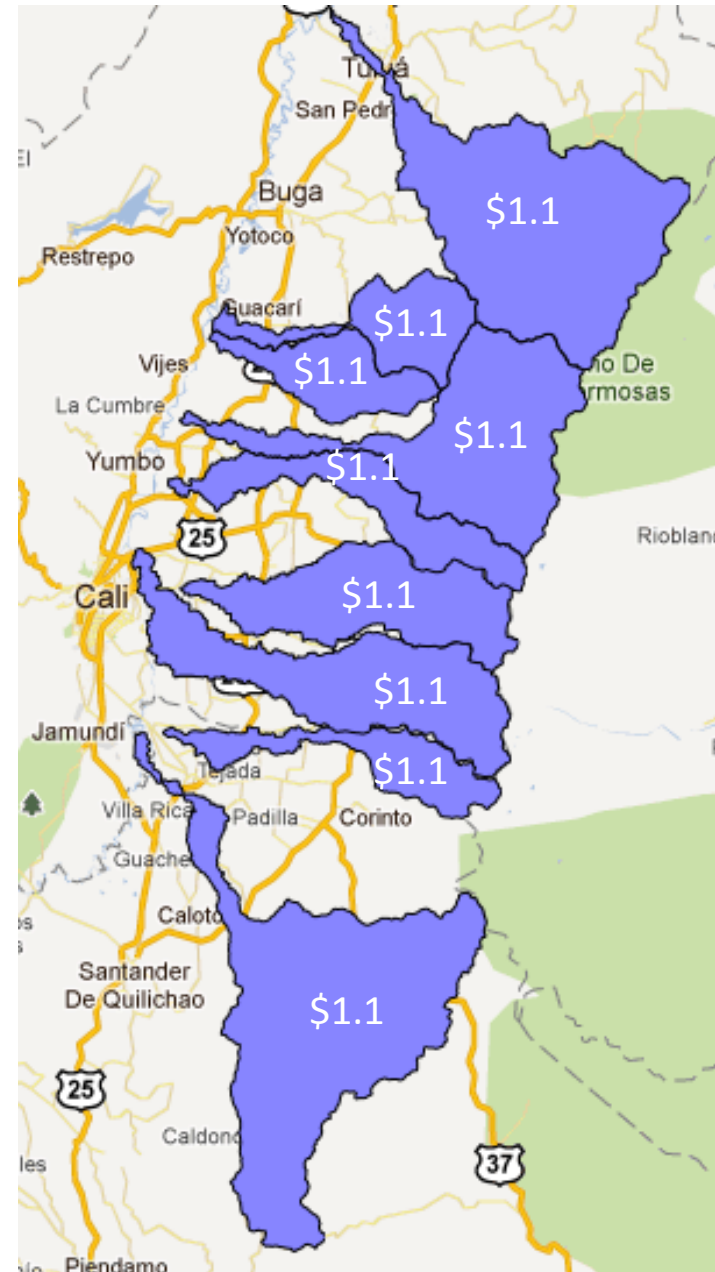


# Equal Allocation

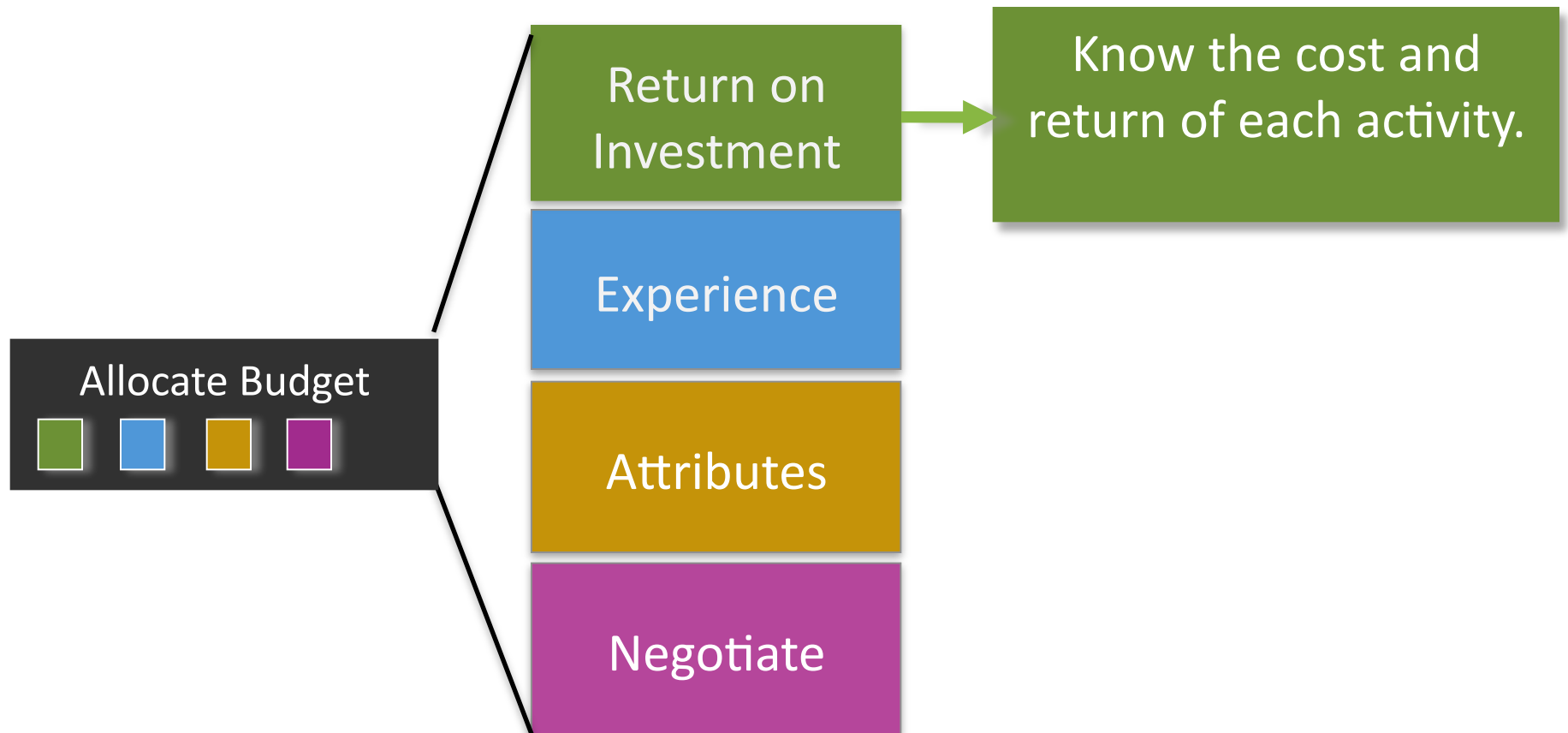
\$10 Million

9 watersheds

\$1.1 Million each

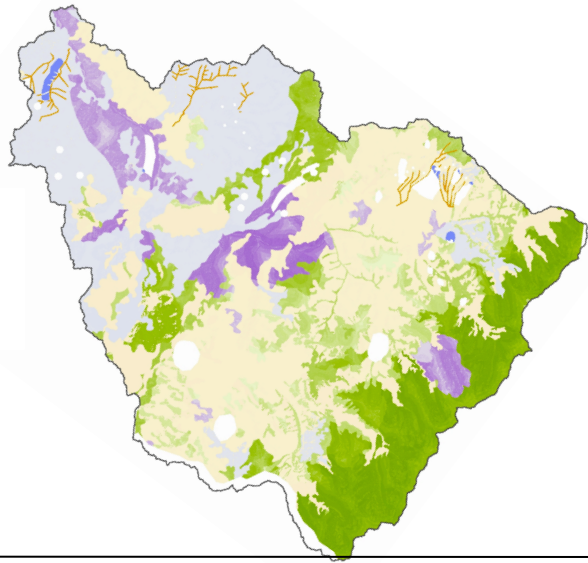


# Options for Allocating the Budget

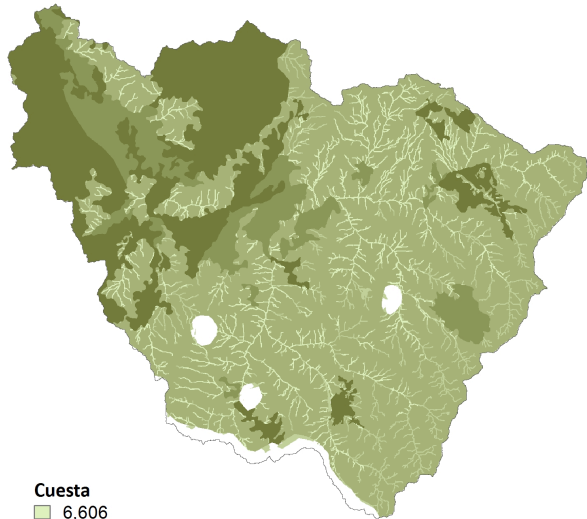


# Options for Allocating the Budget

Benefit



Cost

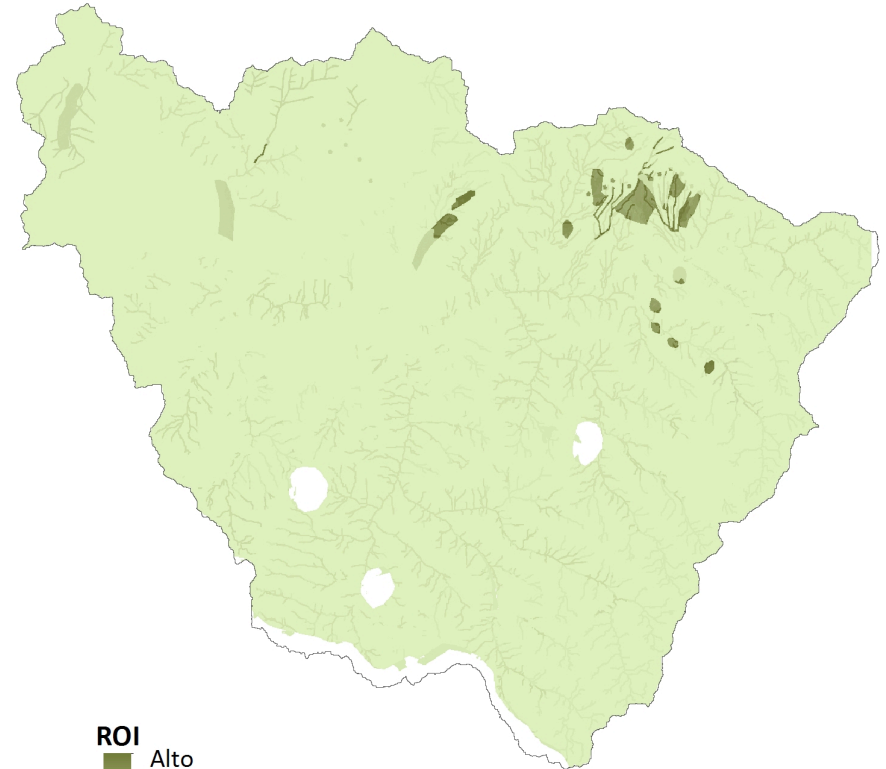


Cuesta

6,606
18,000
97,427
367,641
428,037

0 5 10 Kilómetros

Return on Investment

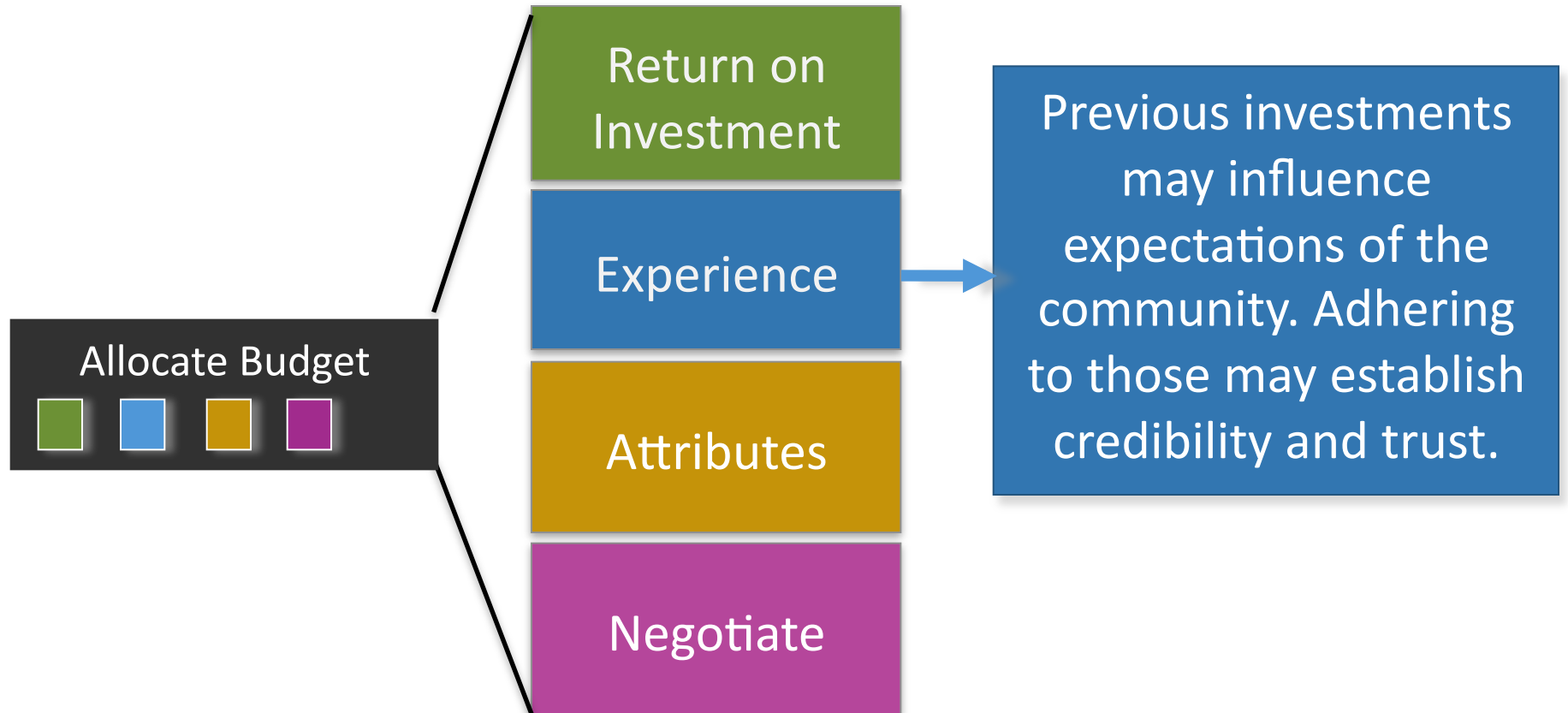


ROI

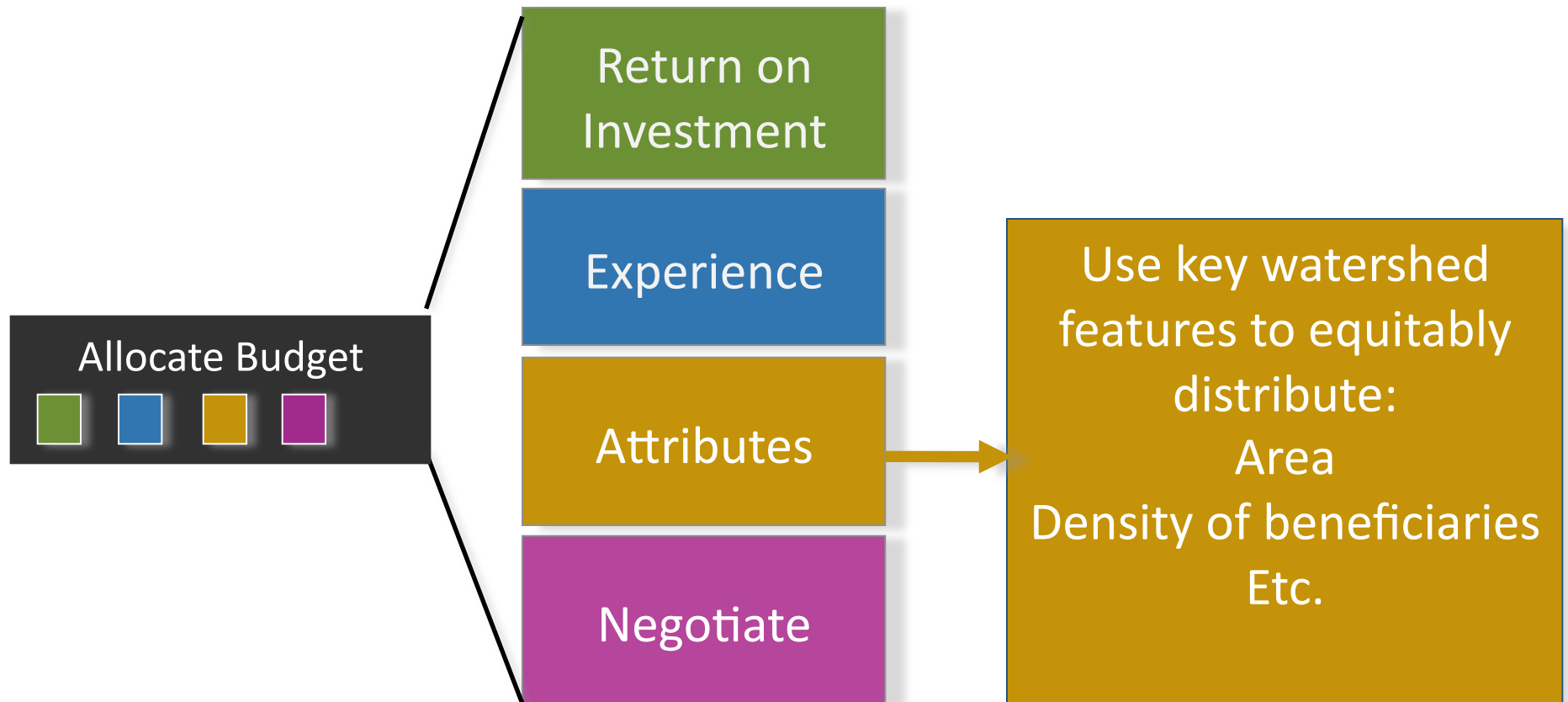
Alto
Bajo

0 5 10 Kilómetros

# Options for Allocating the Budget

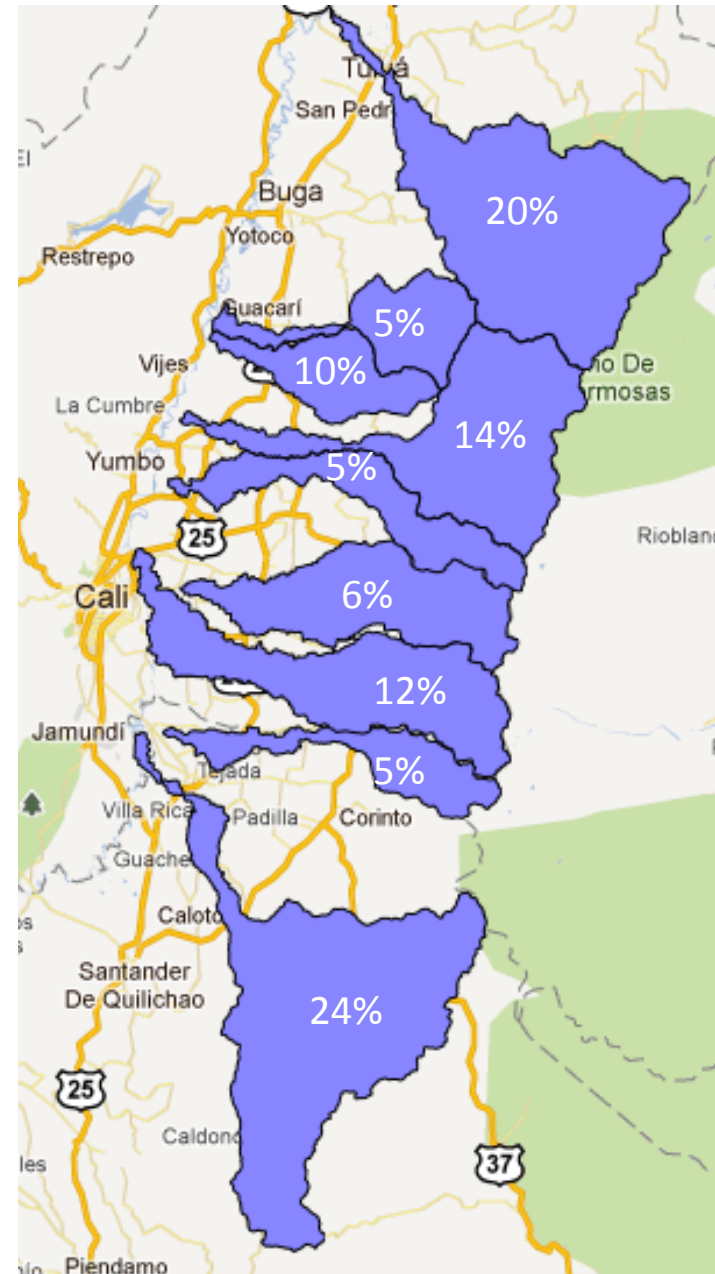


# Options for Allocating the Budget

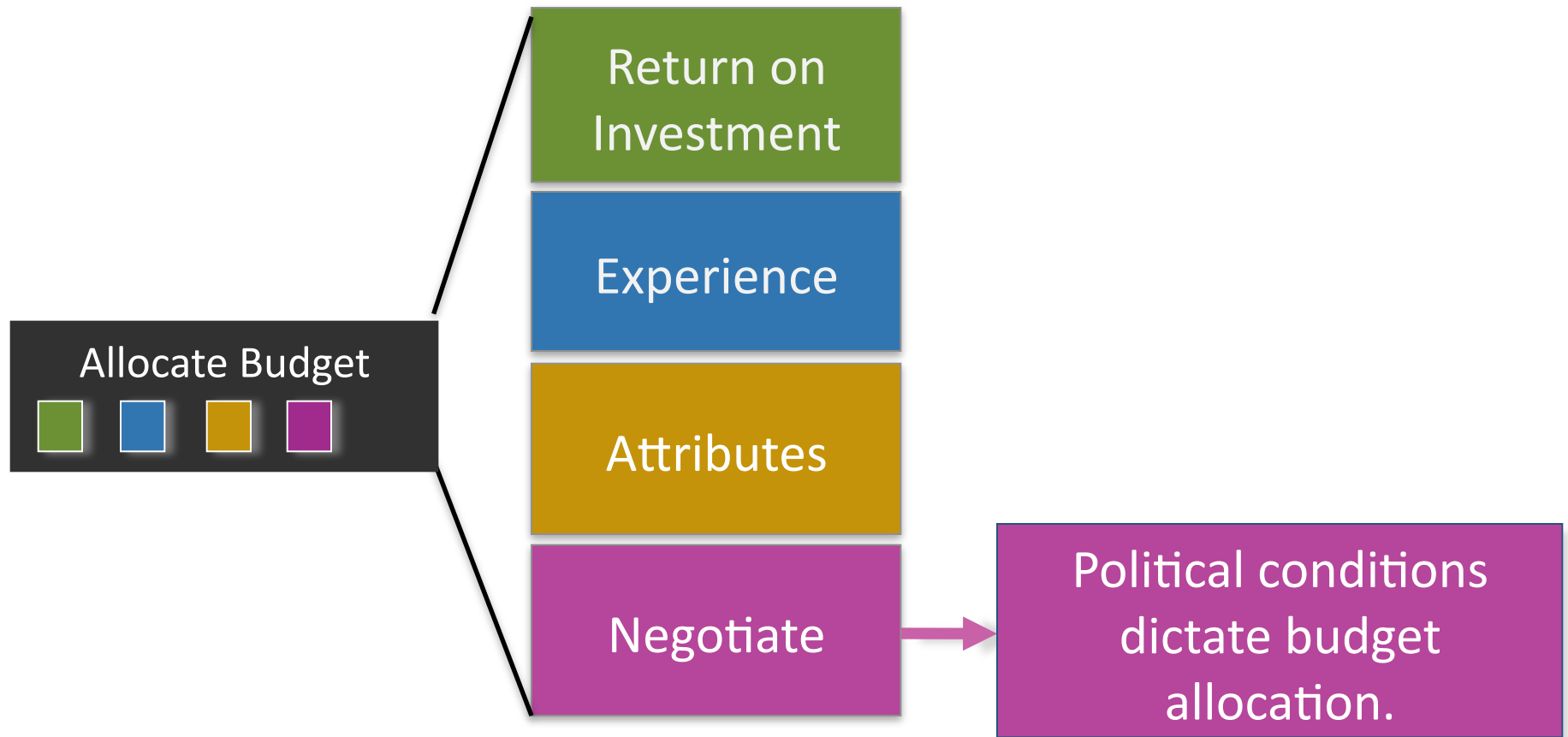


# Attribute Allocation

E. Cauca Valley:  
% Allocation based on %  
of total area



# Options for Allocating the Budget



# Discussion

Are there any options missing?

Should certain options be recommended  
over others?

