

A Convex Optimization Approach to Radiation Treatment Planning with Dose Constraints

Anqi Fu* Barış Ungun* Lei Xing Stephen Boyd

June 16, 2017

Abstract

We present a method for handling dose constraints as part of a convex programming framework for inverse treatment planning. Our method uniformly handles mean dose, maximum dose, minimum dose, and dose-volume (*i.e.*, percentile) constraints as part of a convex formulation. Since dose-volume constraints are non-convex, we replace them with a convex restriction. This restriction is, by definition, conservative; to mitigate its impact on the clinical objectives, we develop a two-pass planning algorithm that allows each dose-volume constraint to be met exactly on a second pass by the solver if its corresponding restriction is feasible on the first pass. In another variant, we add slack variables to each dose constraint to prevent the problem from becoming infeasible when the user specifies an incompatible set of constraints or when the constraints are made infeasible by our restriction. Finally, we introduce `ConRad`, a Python-embedded open-source software package for convex radiation treatment planning. `ConRad` implements the methods described above and allows users to construct and plan cases through a simple interface.

1 Introduction

External beam radiation therapy is the treatment of diseased tissue with beams of ionizing radiation delivered from a source outside the patient. When radiation passes through the patient, it damages both healthy and diseased tissue. A treatment plan must be carefully designed to minimize harm to healthy organs, while delivering enough dose to ablate the targeted tissue. With recent hardware advances, delivered beams can be positioned and shaped with growing sophistication, and clinicians rely increasingly on optimization techniques to guide their treatment decisions. In this paper, we focus on one part of the treatment planning process: the selection of an optimal intensity profile for every radiation beam.

In [SFOM99], the authors provide a comprehensive survey of several problem formulations for treatment planning, including linear [RLMB91] [Höl03] and quadratic programming

*Both authors contributed equally to this paper.

models [JBBS90, XC96, XHS⁺98]. Generally, linear models minimize the weighted sum of doses or the maximum deviation from a prescribed dose, while quadratic models minimize the weighted sum of squared difference between actual and prescribed dose. These formulations incorporate linear bounds on the dose to each structure. To address conflicting clinical goals, researchers have proposed models with multiple objectives and constraints. By varying the weight on each objective, we can produce a set of solutions on the Pareto frontier [HK02] [HCB06a]. Although this approach is flexible, calculating thousands of points on the Pareto frontier proves computationally inefficient, and expert judgment is still required to select a clinically acceptable plan from the set of mathematically optimal plans.

All the methods discussed so far hinge on a convex problem formulation. However, many clinically relevant constraints are non-convex. One such type is the dose-volume constraint, which bounds the dose delivered to a given percentage of a patient’s anatomy [ZLL⁺14]. A review of some models for handling this class of constraints is given in [EGHS08]. A simple approach is to add a nonlinear, volume-sensitive penalty to the objective function [CLI⁺98] [SC98]. Then, a local search algorithm, such as the conjugate gradient method [XC96] [XHS⁺98] [SORM00] or simulated annealing [Web89] [Web92] [MM93], is used to solve the optimization problem. Unfortunately, since this formulation is non-convex, these algorithms often produce a local minimum, which results in a sub-optimal treatment plan [Dea97] [WM02]. Another method is to directly model the dose-volume constraint with a set of binary decision variables. Each variable indicates whether a voxel should be included in the fraction of a structure’s volume that must fulfill the dose bound [LBU⁺90] [LFC00] [LFC03]. Given the dimensions of patient data, this results in a large-scale mixed-integer programming problem, which is prohibitively expensive to compute for most clinical cases.

A more promising approach is to replace each dose-volume constraint with a convex approximation. This allows us to take advantage of large-scale convex optimization algorithms to rapidly generate treatment plans from patient data. Conditional value-at-risk (CVaR) is a metric that represents the average tail loss in a probability distribution [RU00]. It is convex in the loss variable and thus offers a computationally suitable approximation of a dose-volume constraint. In the recent literature, CVaR has been used to formulate linear constraints on the average dose in the upper and lower tails of a structure’s dose distribution, leading to significant improvements in treatment plans [RAD⁺03] [RAJFDK06] [CMP14]. However, CVaR functions are parametric, and implementations of this model require a heuristic search over the parameter space to obtain a good approximation of the dose-volume constraint [AGS⁺10].

Perhaps the model most similar to ours is [HCB06b]. In this paper, the authors solve a multi-criteria optimization problem with a relaxation on the binary variables that determine whether each voxel satisfies the dose-volume constraint. This relaxation amounts to substituting a ramp function for the indicator function that a voxel violates its desired dose-volume threshold. The objectives are the total number of voxel violations for each structure. They test their method on three cases, each with a dose-volume objective on the target, and find that the relaxed solution achieves nearly the same Pareto tradeoff curve as the solution to the mixed-integer program.

These results demonstrate the power of convex models: they provide more flexibility than linear or quadratic models, while avoiding the issue of multiple local optima in non-convex formulations and the intractability of a mixed-integer program. In this paper, we propose a new convex formulation of the fluence map optimization problem with dose-volume constraints. Given a predetermined number of candidate beams, we construct a convex optimization problem around a set of clinical goals and solve for the radiation intensity pattern that best achieves these goals subject to restrictions on the dose distribution. Our algorithm is quick and efficient, allowing clinicians to rapidly compare trade-offs between different plans and select the best treatment for a patient.

This paper is organized as follows: In section 2, we review the radiation treatment planning problem. In section 3, we describe the patient characteristics and constraints that clinicians must consider when selecting an optimal plan. In section 4, we define a convex optimization framework for the basic treatment planning problem. Section 5 introduces dose constraints. We show how to incorporate dose-volume constraints via a convex restriction, which provides an approximation of the dose percentile. In section 6, we present two extensions to our model. Section 7 describes the Python implementation of our algorithm, and section 8 demonstrates its performance in several clinical cases. Finally, section 9 concludes.

2 Problem Description

During external beam radiation therapy, ionizing radiation travels through a patient, depositing energy along the beam paths. Radiation damages both diseased and healthy tissue, but clinicians aim to damage these tissues differentially, exploiting the fact that cancer cells typically have faulty cell repair mechanisms and exhibit a lower tolerance to radiation than healthy cells. The goal is to focus radiation beams such that enough dose is delivered to kill diseased tissue, while avoiding as much of the surrounding healthy organs as possible. The clinician separates these structures into one or more planning target volumes (PTVs) to be irradiated at a prescribed dose level and several organs-at-risk (OARs) to spare from radiation.

Before treatment, the patient is positioned on a couch. Photon, electron, proton, or heavier particle beams are generated with a particle accelerator and coupled to a mechanized gantry that contains additional hardware components, which shape and focus the beams. The gantry typically rotates around one central axis (but may have additional rotational and translational degrees of freedom [MHS⁺93] [GHBF⁺13] [JCM⁺98]), so that by controlling the gantry and couch, beams can be delivered from almost any angle and location around the patient.

Delivery strategies vary from using a large number of apertures (beam shapes) delivered sequentially from a few beam angles, as in intensity-modulated radiation therapy (IMRT), to calculating a single optimal aperture at a large number of angles, as in volumetric modulated arc therapy (VMAT). For a given delivery strategy, the goal of treatment planning is to determine the optimal beam angles, shapes and intensities that most closely approximate a desired dose distribution to the targeted volumes. In this work, we consider the task of

optimizing intensities for a given set of beams of known positions and shapes, *i.e.*, calculating optimal beam weights; this is applicable to the fluence map optimization (FMO) step in IMRT planning, the FMO step in direct aperture optimization for modalities such as VMAT, 4π , or SPORT [Bed09] [DLR⁺13] [LX13], as well as inverse planning problems for other common modalities such as stereotactic radiosurgery or proton beam therapy.

3 Clinical Planning

3.1 Dose Physics

Prior to treatment, medical images — such as CT, MRI and PET scans — are collected to form a three-dimensional image of the patient’s anatomy. This representation is discretized into regular volume elements, or voxels. The anatomy is then delineated by clinicians into various structures, and the dose to each structure is considered during planning. Although the structure contours drawn by clinicians may overlap, in this work, we associate each voxel with a single structure.

Dose calculation algorithms range from analytical approximations to Monte Carlo simulations, but in all cases, they provide a model with a linear mapping from beam intensities to delivered voxel doses. The dose within each voxel is assumed to be uniform. For each candidate beam, we have an aperture shape that may be further subdivided, *e.g.*, into regular rectangular subdivisions called beamlets. The intensities of these beams (or beamlets) are represented in a vector. A patient-specific dose deposition matrix maps this vector of radiation intensities to the vector of doses delivered per voxel.

3.2 Dose Objectives

Given a fixed number of candidate beams, our goal is to determine the beam intensities that satisfy a clinical objective defined in terms of the dose delivered to each voxel in the patient anatomy.

Every PTV is prescribed a desired dose, which we wish to deposit uniformly throughout the target. Delivering too high or too low a dose of radiation has different clinical consequences, so we introduce separate underdose and overdose penalties for every PTV. In the case of OARs, a lower dose is always preferable, so we penalize any dose above zero and omit an underdose penalty term. In addition to clinical considerations, such as the patient’s medical history and past courses of radiation therapy, different organs usually exhibit different levels of sensitivity to radiation. For these reasons, we allow the penalties for each OAR to be scaled independently, allowing the planner to adjust the relative importance of meeting the dose targets for each structure separately.

We apply the penalty associated with each structure to every voxel in that structure, and the objective function of our treatment planning problem tallies these dose penalties over all voxels in a patient’s anatomy.

3.3 Dose Constraints

In addition to dose penalties, we allow for hard constraints on the amount of radiation delivered to portions of the patient anatomy. For example, the clinician may only consider plans in which the spinal column receives a dose below a certain level because any more will cause intolerable injury to the patient. Basic constraints of this nature take the form of bounds on the mean, minimum, and maximum dose to a structure. More generally, bounds can be enforced on the dose to a fraction of the voxels in a structure. These dose-volume constraints restrict the relative volume that receives radiation beyond a particular threshold, giving the clinician precise control over the dose distribution. This is especially important when sparing OARs, since some organs are able to sustain high levels of uniform radiation, while others will fail unless the radiation is contained to a small fraction of the tissue.

Clinicians typically use a dose-volume histogram (DVH) to assess the quality of a treatment plan. For every structure, the DVH specifies the percentage of its volume that receives at least a certain dose. A point (x, y) on the curve indicates that $y\%$ of the total voxels in the structure receives a dose of at least x Gy. Ideally, we want our structures to receive exactly the prescribed dose throughout their volumes. If the prescription is d Gy, then our optimal DVH curve for the PTV is a step function with a drop at $(d, 100)$, and our optimal DVH for each OAR exhibits a drop at $(0, 100)$.

Dose constraints restrict the shape and location of points on the DVH curve. In Figure 1, a lower dose-volume constraint, $D(80) \geq 0.85$, is represented by the right-facing arrow centered at $(0.85, 80)$. This ensures that a minimum of 80% of the structure's volume receives at least 0.85 Gy, *i.e.*, $y \geq 80$ along the vertical line $x = 0.85$. The PTV's DVH curve is pushed rightward by this type of constraint. Similarly, an upper dose-volume constraint, $D(30) \leq 0.23$, is labeled with a left-facing arrow at $(0.23, 30)$, which pushes the OAR's DVH curve leftward, representing the restriction that $y \leq 30$ along the line $x = 0.23$. Together, the DVH curves and their respective dose constraints enable the clinician to easily visualize trade-offs when formulating a treatment plan.

4 Convex Formulation

Consider a case with m voxels inside a patient volume and n candidate treatment beams. Our goal is to determine the beam intensities $x \in \mathbf{R}_+^n$ that deliver a vector of voxel doses $y \in \mathbf{R}_+^m$, which meet a set of clinical objectives. We are given a case-specific dose influence matrix $A \in \mathbf{R}_+^{m \times n}$ that approximates the relationship between the beams and doses linearly as $y = Ax$. We refer to the rows of A as $a_i \in \mathbf{R}_+^n$ for $i = 1, \dots, m$. The basic inverse treatment planning problem is of the form

$$\begin{aligned} & \underset{x, y}{\text{minimize}} && f(y) \\ & \text{subject to} && y = Ax \\ & && x \geq 0, \end{aligned}$$

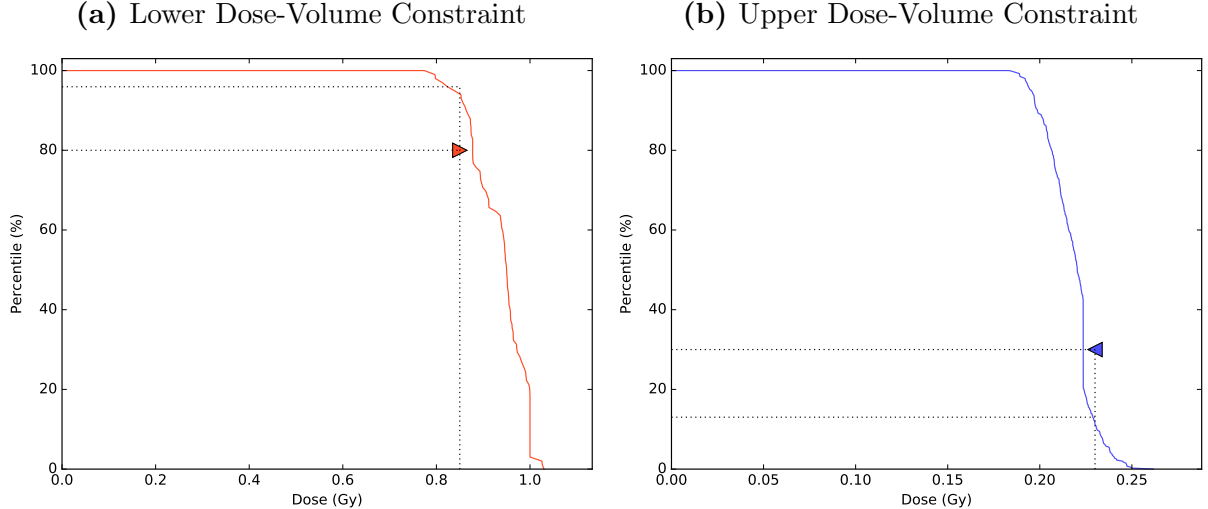


Figure 1: (a) A lower DVH constraint ensures at least 80% of the structure’s volume receives at least 0.85 Gy. The dotted line intersects the curve at (0.85, 93). (b) An upper DVH constraint allows at most 30% of the volume to receive at least 0.23 Gy.

where $f : \mathbf{R}^m \rightarrow \mathbf{R}$ is a convex loss function chosen to penalize voxel doses based on the goals of the clinician. Here, the inequality on x is understood to be applied element-wise. In a typical case, a patient is prescribed a treatment plan that can be characterized by a vector of doses $d \in \mathbf{R}_+^m$ to each voxel. Our function f then penalizes the deviation of the calculated dose y from the prescribed dose d , taking into account the different structures inside a patient.

In our formulation, we consider a loss function $f(y) = \sum_{i=1}^m f_i(y_i)$ where $y_i = a_i^T x$ and each f_i is a piecewise-linear function

$$f_i(y_i) = w_i^-(y_i - d_i)_- + w_i^+(y_i - d_i)_+.$$

The parameters w_i^- and w_i^+ are the non-negative weights on the underdose and overdose penalties, respectively.

Prior to treatment planning, the m voxels in a patient volume are grouped into S distinct, non-overlapping sets representing the planning target volume (PTV), organs-at-risk (OARs), and generic non-target tissue (often labeled “body”). Each set \mathcal{V}_s contains all the voxel indices i within a corresponding internal structure with index s . Together, $\{\mathcal{V}_s\}_1^S$ forms a partition of the patient volume, *i.e.*, $\bigcup_1^S \mathcal{V}_s$ covers all voxel indices and $\mathcal{V}_{s_1} \cap \mathcal{V}_{s_2} = \emptyset$ for $s_1 \neq s_2$. We assume the indices are ordered such that $s = 1, \dots, P \leq S$ are targets and the rest non-targets.

For simplicity, we choose our voxel doses and penalties to be uniform within each structure. We let d_s represent the prescribed dose, and w_s^- and w_s^+ the underdose and overdose penalties for all voxels $i \in \mathcal{V}_s$. The loss function for our basic inverse planning problem is

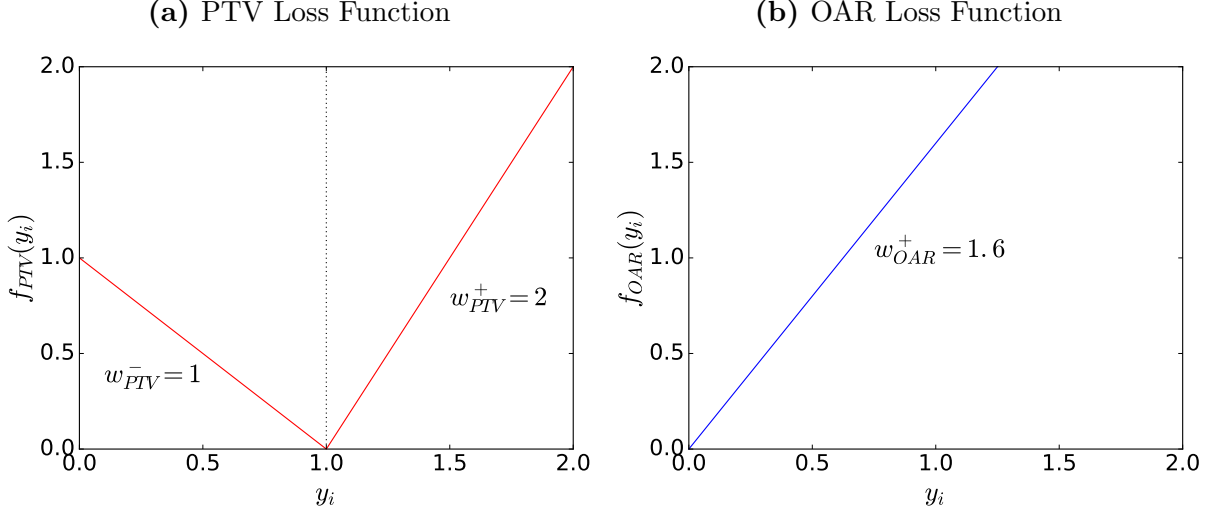


Figure 2: (a) The loss function for a PTV prescribed $d_s = 1$ with penalties $w_s^- = 1$ and $w_s^+ = 2$, and (b) the loss function for an OAR with penalty $w_s^+ = 1.6$.

$f(y) = \sum_{s=1}^S f_s(y_i)$ where

$$f_s(y_i) = \sum_{i \in \mathcal{V}_s} f_i(y_i) = \sum_{i \in \mathcal{V}_s} \{w_s^-(y_i - d_s)_- + w_s^+(y_i - d_s)_+\}.$$

A non-target structure s is always prescribed a dose of zero, and since $y \geq 0$, its individual loss simplifies to $f_i(y_i) = w_s^+ y_i$. Thus, its only contribution to the objective is through its total dose. An example of these loss functions is given in Figure 2. We can collapse the sum of non-target losses into a single linear term,

$$\sum_{s=P+1}^S f_s(y_i) = \sum_{s=P+1}^S w_s^+ \left(\sum_{i \in \mathcal{V}_s} y_i \right) = \sum_{s=P+1}^S w_s^+ z_s = c^T z,$$

where $c = (w_{P+1}^+, \dots, w_S^+)$ and $z = \left(\sum_{i \in \mathcal{V}_{P+1}} y_i, \dots, \sum_{i \in \mathcal{V}_S} y_i \right)$. Our objective is then

$$f(y) = \sum_{s=1}^P \sum_{i \in \mathcal{V}_s} \{w_s^-(y_i - d_s)_- + w_s^+(y_i - d_s)_+\} + c^T z.$$

This formulation is closely related to quantile regression [DFV13]. In the latter, we minimize $\sum_i \phi(y_i - v - d_i)$ with respect to (x, v) where

$$\phi(u) = \tau(u)_+ + (1 - \tau)(u)_- = \frac{1}{2}|u| + \left(\tau - \frac{1}{2} \right) u$$

is the tilted l_1 penalty with $\tau \in (0, 1)$. For our inverse planning problem, the residual $r_i \equiv y_i - v - d_i$ can be interpreted as the difference between calculated and desired doses,

allowing for a uniform dose offset $v \in \mathbf{R}$ within each structure. We rewrite our individual loss as

$$\begin{aligned} f_i(y_i - v) &= w_i^-(r_i)_- + w_i^+(r_i)_+ \\ &= (w_i^- + w_i^+) \left(\frac{w_i^-}{w_i^- + w_i^+} (r_i)_- + \frac{w_i^+}{w_i^- + w_i^+} (r_i)_+ \right) \\ &= (w_i^- + w_i^+) \left(\frac{1}{2} |r_i| + \left(\frac{w_i^+}{w_i^- + w_i^+} - \frac{1}{2} \right) r_i \right), \end{aligned}$$

and the loss function becomes

$$f_s(y_i - v) = \sum_{i \in \mathcal{V}_s} f_i(y_i - v) = (w_s^- + w_s^+) \sum_{i \in \mathcal{V}_s} \left(\frac{1}{2} |r_i| + \left(\tau_s - \frac{1}{2} \right) r_i \right),$$

where $\tau_s \equiv \frac{w_s^+}{w_s^- + w_s^+} \in (0, 1)$. For $r_i \neq 0$, the first order condition with respect to v is

$$\frac{\partial f_s(y_i - v)}{\partial v} = \tau_s |\{i : r_i > 0\}| - (1 - \tau_s) |\{i : r_i < 0\}| = 0,$$

which implies $\tau_s |\mathcal{V}_s| = |\{i : r_i < 0\}|$, *i.e.*, in a given structure s , the τ_s -quantile of optimal residuals is zero. Although our original loss does not include v , we can use this as a rule of thumb for selecting relative dose penalties (w_s^-, w_s^+) .

5 Dose Constraints

5.1 Percentile

A percentile constraint, otherwise known as a dose-volume constraint, bounds the dose delivered to a given percentile of a patient structure. This allows us to set a limit on the fraction of total voxels that are under- or overdosed with respect to a user-provided threshold. For clinicians, this provides a way to shape the dose-volume histogram directly rather than by searching through combinations of objective weights to achieve desired dose statistics. Given a structure s and dose vector y , let $D_s(p, y)$ represent the minimum dose delivered to p percent of all voxels in s , *i.e.*, $D_s(p, y)$ is the greatest lower bound on the dose received by $p\%$ of the tissue.

To formalize this notion, we define an exact value count function $v_s : \mathbf{R}_+^m \times \mathbf{R}_+ \rightarrow \mathbf{Z}_+$, which computes the total number of voxels $i \in \mathcal{V}_s$ that receive a dose above $b \in \mathbf{R}_+$. Let $g(u) = \mathbb{1}\{u \geq 0\}$, then

$$v_s(y, b) = \sum_{i \in \mathcal{V}_s} \mathbb{1}\{y_i \geq b\} = \sum_{i \in \mathcal{V}_s} g(y_i - b)$$

and our p -th percentile dose is

$$D_s(p, y) = \max\{b \in \mathbf{R}_+ : v_s(y, b) \geq \phi_s(p)\} \quad \text{where} \quad \phi_s(p) \equiv \frac{p}{100} |\mathcal{V}_s|.$$

Observe that $D_s(p, y) \geq 0$ is finite and weakly decreasing in p .

Our goal is to bound $D_s(p, y)$. For example, we may want at least 30% of the voxels in structure s to receive a dose above 25 Gy; this is identical to $D_s(30, y) \geq 25$. Let $l < u$ be non-negative scalar values. An lower dose-volume constraint, $D_s(p, y) \geq l$, requires the number of voxels in s that receive a dose above l to be at least $p\%$ of the total voxels in the structure. Similarly, an upper dose-volume constraint, $D_s(p, y) \leq u$, requires the number of voxels $i \in \mathcal{V}_s$ with a dose above u to be at most $p\%$ of voxels in \mathcal{V}_s , or equivalently, at least $100 - p\%$ of the voxels to receive a dose under u . Thus, the inequalities

$$D_s(p, y) \leq u \quad \Leftrightarrow \quad v_s(y, u) \leq \phi_s(p) \quad \Leftrightarrow \quad v_s(-y, -u) \geq \phi_s(100 - p)$$

are equivalent, as are

$$D_s(p, y) \geq l \quad \Leftrightarrow \quad v_s(y, l) \geq \phi_s(p) \quad \Leftrightarrow \quad v_s(-y, -l) \leq \phi_s(100 - p).$$

In general, this is a hard combinatorial problem: the brute force approach for a single upper dose-volume constraint, for example, is to solve all $\binom{|\mathcal{V}_s|}{\phi}$ convex problems obtained by choosing subsets of $\phi = \lceil \phi_s(p) \rceil$ voxels to constrain below u , which is prohibitively large given the size of patient geometries.

5.2 Mean, Minimum, and Maximum

In a few special cases, we can set convex constraints on the dose. Let the average, minimum, and maximum dose delivered to all voxels in structure s be

$$D_s^{\text{avg}}(y) = \frac{1}{|\mathcal{V}_s|} \sum_{i \in \mathcal{V}_s} y_i, \quad D_s^{\text{min}}(y) = \min_{i \in \mathcal{V}_s} \{y_i\}, \quad D_s^{\text{max}}(y) = \max_{i \in \mathcal{V}_s} \{y_i\}.$$

A lower bound $b \in \mathbf{R}_+$ on the minimum dose is equivalent to requiring $y_i \geq b$ for all $i \in \mathcal{V}_s$, and similarly for an upper bound on the maximum dose. Thus, we can enforce linear constraints on these dose statistics in our problem. Our non-convex formulation with exact dose-volume constraints is

$$\begin{aligned} & \underset{x, y}{\text{minimize}} && f(y) \\ & \text{subject to} && y = Ax \\ & && x \geq 0 \\ & && l_{s,k} \leq D_s(p_{s,k}, y) \leq u_{s,k}, \quad k = 1, \dots, K_s, \quad s = 1, \dots, S \\ & && l_s^{\text{avg}} \leq D_s^{\text{avg}}(y) \leq u_s^{\text{avg}}, \quad s = 1, \dots, S \\ & && D_s^{\text{min}}(y) \geq l_s^{\text{min}}, \quad s = 1, \dots, S \\ & && D_s^{\text{max}}(y) \leq u_s^{\text{max}}, \quad s = 1, \dots, S \end{aligned} \tag{1}$$

where for each structure s , we index the parameters of its dose-volume constraints with $k = 1, \dots, K_s$.

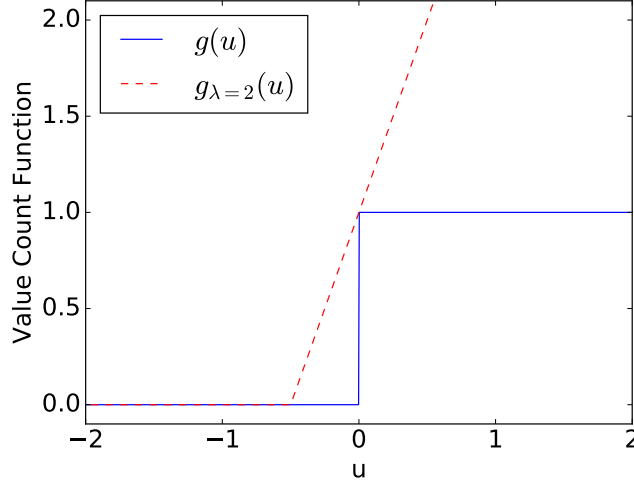


Figure 3: The indicator function $g(u)$ (solid) and hinge loss $\hat{g}_\lambda(u)$ with $\lambda = 2$ (dashed). Note that $\hat{g}_\lambda(u) \geq g(u)$ for all $u \in \mathbf{R}$, so the hinge loss provides a convex restriction on the dose-volume constraint.

5.3 Convex Restriction

To address the non-convexities in problem (1), we introduce a convex restriction that provides an effective heuristic for satisfying the dose-volume constraints. Our restricted constraint overestimates the number of voxels that are underdosed with respect to d by replacing the indicator g in v with a family of hinge loss functions

$$\hat{g}_\lambda(u) = (1 + \lambda u)_+ = \max(1 + \lambda u, 0),$$

parametrized by $\lambda > 0$, giving us a restricted value count for structure s of

$$\hat{v}_s(y, b; \lambda) = \sum_{i \in \mathcal{V}_s} \hat{g}_\lambda(y_i - b) = \sum_{i \in \mathcal{V}_s} (1 + \lambda(y_i - b))_+.$$

If $u > 0$, then $g(u) = 1 < 1 + \lambda u = \hat{g}_\lambda(u)$, and if $u \leq 0$, then $g(u) = 0 \leq \hat{g}_\lambda(u)$. Hence, $g(u) \leq \hat{g}_\lambda(u)$ for all $u \in \mathbf{R}$ and $\lambda > 0$ (Figure 3). Evaluating at $u_i = y_i - b$ and summing over all voxels $i \in \mathcal{V}_s$, we obtain

$$v_s(y, b) = \sum_{i \in \mathcal{V}_s} g(y_i - b) \leq \sum_{i \in \mathcal{V}_s} \hat{g}_\lambda(y_i - b) = \hat{v}_s(y, b; \lambda).$$

An upper bound on the restricted value count at a given point thus ensures the exact value count is bounded above as well.

We can guarantee our dose-volume constraints hold by enforcing specific limits on \hat{v} . If $\hat{v}_s(y, u; \lambda) \leq \phi_s(p)$, then $v_s(y, u) \leq \phi_s(p)$, and the upper dose-volume constraint, $D_s(p, y) \leq$

u , is satisfied. Similarly, $\hat{v}_s(-y, -l; \lambda) \leq \phi_s(100 - p)$ implies that $D_s(p, y) \leq l$. To simplify notation, we rewrite $\hat{v}_s(y, b; \lambda) \leq \phi$ as

$$\sum_{i \in \mathcal{V}_s} (1 + \lambda(y_i - b))_+ \leq \phi.$$

Since $\lambda > 0$, we can divide both sides of the inequality by λ . Letting $\alpha \equiv \frac{1}{\lambda}$ and gathering all terms on the left-hand side, we obtain the inequality

$$\sum_{i \in \mathcal{V}_s} (\alpha + (y_i - b))_+ - \alpha\phi \leq 0.$$

The left-hand side of this inequality is a sum of convex functions of (α, y) , and hence convex. Note that while λ was a parameter of our restricted value count function, $\alpha > 0$ can be an optimization variable, since the left-hand term is jointly convex in α and y . Additionally, we can replace the constraint $\alpha > 0$ with $\alpha \geq 0$ because when $\alpha = 0$, the constraint simplifies to $(y_i - b)_+ \leq 0$, which is equivalent to $y_i \leq b$ for all $i \in \mathcal{V}_s$. Certainly in this case, the condition $D_s(p, y) \leq b$ holds. Thus, by defining the functions

$$\hat{D}_s^+(p, y, b, \alpha) = \sum_{i \in \mathcal{V}_s} (\alpha + (y_i - b))_+ - \alpha\phi_s(p)$$

for upper constraints and

$$\hat{D}_s^-(p, y, b, \alpha) = \sum_{i \in \mathcal{V}_s} (\alpha - (y_i - b))_+ - \alpha\phi_s(100 - p),$$

for lower constraints, each convex restriction can be represented by inequalities in terms of these functions: for $\alpha \geq 0$, $\hat{D}_s^+(p, y, u, \alpha) \leq 0$ implies $D_s(p, y) \leq u$, and $\hat{D}_s^-(p, y, l, \alpha) \leq 0$ implies $D_s(p, y) \geq l$. Our convex formulation with restricted dose-volume constraints is

$$\begin{aligned} & \underset{(x, y, \alpha)}{\text{minimize}} && f(y) \\ & \text{subject to} && y = Ax \\ & && x \geq 0, \alpha \geq 0 \\ & && \hat{D}_s^+(p_{s,k}, y, u_{s,k}, \alpha_{s,k}^{(u)}) \leq 0, \quad k = 1, \dots, K_s^{(u)}, s = 1, \dots, S \\ & && \hat{D}_s^-(p_{s,k}, y, l_{s,k}, \alpha_{s,k}^{(l)}) \leq 0, \quad k = 1, \dots, K_s^{(l)}, s = 1, \dots, S \\ & && l_s^{\text{avg}} \leq D_s^{\text{avg}}(y) \leq u_s^{\text{avg}}, \quad s = 1, \dots, S \\ & && D_s^{\text{min}}(y) \geq l_s^{\text{min}}, \quad s = 1, \dots, S \\ & && D_s^{\text{max}}(y) \leq u_s^{\text{max}}, \quad s = 1, \dots, S, \end{aligned} \tag{2}$$

where for every structure s , we index the parameters of its upper dose-volume constraints with $k = 1, \dots, K_s^{(u)}$, and its lower dose-volume constraints with $k = 1, \dots, K_s^{(l)}$. We include a separate optimization variable, $\alpha_{s,k}$, in each dose-volume constraint to represent the inverse slope of its convex restriction and stack these variables in a vector $\alpha \equiv (\alpha^{(l)}, \alpha^{(u)})$. Optimizing over α in addition to (x, y) ensures we obtain the best hinge loss approximation to the value count function. The above formulation is a restriction of our original problem: if (x, y, α) is feasible for (2), then (x, y) is feasible for (1).

6 Refinements

6.1 Two-Pass Refinement

A solution (x^*, y^*, α^*) to problem (2) satisfies our restricted dose-volume constraints, so it is feasible for our original problem (1) with exact dose-volume constraints. However, since the convex restriction enforces an upper bound on the restricted value count function \hat{v} , the feasible set of problem (2) is a subset of the feasible set of problem (1), and (x^*, y^*) may not be optimal for the latter. One way to improve our solution is to bound only the minimum number of voxels in each structure required to satisfy the dose-volume constraint. A good heuristic is to select those voxels i that receive a dose y_i^* , which satisfies the associated dose-volume bound by the largest margin, and re-solve the problem with the convex restriction replaced by bounds on just these voxels. The solution of this second pass, (x^{**}, y^{**}) , will achieve an objective value $f(y^{**}) \leq f(y^*)$ while still satisfying our exact dose-volume constraints.

To make this precise, consider the lower dose-volume constraint $D_s(p, y) \geq l$. This is equivalent to $y_i \geq l$ for at least $\phi_s(p)$ voxels in structure s . Given y^* from our first pass optimization, we compute the margin $\xi_i^* = (y_i^* - l)$ and select the $q_s = \lceil \phi_s(p) \rceil$ voxels $i \in \mathcal{V}_s$ with the largest values of ξ_i^* . Call this subset $\mathcal{Q}_s^- \subseteq \mathcal{V}_s$. Now, we replace $D_s(p, y) \geq l$ in problem (1) with the precise voxel constraints $y_i \geq l$ for all $i \in \mathcal{Q}_s^-$. On the second pass,

$$v_s(y, l) = \sum_{i \in \mathcal{V}_s} \mathbb{1}\{y_i \geq l\} \geq \sum_{i \in \mathcal{Q}_s^-} \mathbb{1}\{y_i \geq l\} = q_s \geq \phi_s(p),$$

so our upper dose-volume constraint is satisfied. An analogous argument with $q_s = \lceil \phi_s(100 - p) \rceil$ and $\xi_i^* = (u - y_i^*)$ produces the subset \mathcal{Q}_s^+ for an upper dose-volume constraint $D_s(p, y) \leq u$. Given a solution (x^*, y^*, α^*) to (2), we repeat this process with every such constraint to obtain the second-pass problem formulation

$$\begin{aligned} & \underset{x, y}{\text{minimize}} && f(y) \\ & \text{subject to} && y = Ax \\ & && x \geq 0 \\ & && y_i \leq u_{s,k} \quad \forall i \in \mathcal{Q}_{s,k}^+, \quad k = 1, \dots, K_s^{(u)}, \quad s = 1, \dots, S \\ & && y_i \geq l_{s,k} \quad \forall i \in \mathcal{Q}_{s,k}^-, \quad k = 1, \dots, K_s^{(l)}, \quad s = 1, \dots, S \\ & && l_s^{\text{avg}} \leq D_s^{\text{avg}}(y) \leq u_s^{\text{avg}}, \quad s = 1, \dots, S \\ & && D_s^{\text{min}}(y) \geq l_s^{\text{min}}, \quad s = 1, \dots, S \\ & && D_s^{\text{max}}(y) \leq u_s^{\text{max}}, \quad s = 1, \dots, S, \end{aligned} \tag{3}$$

where the voxel subsets are indexed with $k = 1, \dots, K_s^{(u)}$ for upper dose-volume constraints, and $k = 1, \dots, K_s^{(l)}$ for lower dose-volume constraints. We can warm start our solver at (x^*, y^*) to speed up the second pass optimization.

Algorithm 6.1 *Two-pass algorithm.*

given a dose matrix $A \in \mathbf{R}^{m \times n}$, a prescribed dose vector $d \in \mathbf{R}^m$, and a set of dose-volume constraints \mathcal{C} .

1. *First pass.* Obtain the solution (x^*, y^*, α^*) to problem (2).

for each $(l, p, s) \in \mathcal{C}$ **do**

2a. *Compute margins.* Calculate $\xi_i^* = y_i^* - l$ for all $i \in \mathcal{V}_s$.

2b. *Sort margins.* Sort $\{\xi_i^*\}_{i \in \mathcal{V}_s}$ in ascending order to form a set ξ_s .

2c. *Identify voxel subset.* Select the $\lceil \phi_s(p) \rceil$ largest values $\xi_i \in \xi_s$ and include their indices i in $\mathcal{Q}_{s,k}^-$.

end for

for each $(u, p, s) \in \mathcal{C}$ **do**

3a. *Compute margins.* Calculate $\xi_i^* = u - y_i^*$ for all $i \in \mathcal{V}_s$.

3b. *Sort margins.* Sort $\{\xi_i^*\}_{i \in \mathcal{V}_s}$ in ascending order to form a set ξ_s .

3c. *Identify voxel subset.* Select the $\lceil \phi_s(100 - p) \rceil$ largest values $\xi_i \in \xi_s$ and include their indices i in $\mathcal{Q}_{s,k}^+$.

end for

4. *Second pass.* Obtain the solution (x^{**}, y^{**}) to problem (3) using (x^*, y^*) as a warm start point.

6.2 Dose Constraints with Slack

If our dose constraints are too strict, problem (2) may not have a solution. This can arise even if the feasible set for our original problem (1) is non-empty, since our convex restriction enforces more stringent bounds on the dose distribution. To ensure the first pass of our algorithm always supplies a solution, we introduce a slack variable $\delta \in \mathbf{R}_+$ to the bounds of each dose constraint, mapping lower bounds $l \rightarrow (l - \delta)$ and upper bounds $u \rightarrow (u + \delta)$. This creates soft constraints that need not be met precisely by the solution. Our problem reformulated with restricted dose-volume constraints and slack is

$$\begin{aligned}
& \underset{(x, y, \alpha, \delta)}{\text{minimize}} && f(y) \\
& \text{subject to} && y = Ax \\
& && x \geq 0, \alpha \geq 0, \delta \geq 0 \\
& && \hat{D}_s^+ \left(p_{s,k}, y, u_{s,k} + \delta_{s,k}^{(u)}, \alpha_{s,k}^{(u)} \right) \leq 0, && k = 1, \dots, K_s^{(u)}, \quad s = 1, \dots, S \\
& && \hat{D}_s^- \left(p_{s,k}, y, l_{s,k} - \delta_{s,k}^{(l)}, \alpha_{s,k}^{(l)} \right) \leq 0, && k = 1, \dots, K_s^{(l)}, \quad s = 1, \dots, S \\
& && l_s^{\text{avg}} - \delta_s^{\text{avg},(l)} \leq D_s^{\text{avg}}(y) \leq u_s^{\text{avg}} + \delta_s^{\text{avg},(u)}, && s = 1, \dots, S \\
& && D_s^{\text{min}}(y) \geq l_s^{\text{min}} - \delta_s^{\text{min}}, && s = 1, \dots, S \\
& && D_s^{\text{max}}(y) \leq u_s^{\text{max}} + \delta_s^{\text{max}}, && s = 1, \dots, S
\end{aligned} \tag{4}$$

Note that δ is a variable in the optimization, and the value of each $\delta_{s,k}$ indicates the amount (in units of delivered dose, *e.g.*, Gy) by which each bound is weakened in the solution.

We can incorporate soft constraints into the two-pass algorithm as well. On the first pass, we solve problem (4) to obtain the optimal variables (x^*, y^*, α^*) and the optimal slacks δ^* . Our margin for selecting \mathcal{Q}_s is now computed with respect to the slack bound, *i.e.*, $\xi_i^* = (y_i^* - l - \delta^*)$ for lower-volume dose constraints, and $\xi_i^* = (u + \delta^* - y_i^*)$ for upper

dose-volume constraints. Finally, we weaken the bounds in problem (3) by δ^* , giving us the reformulated second pass optimization with slack dose-volume constraints

$$\begin{aligned}
& \underset{x,y}{\text{minimize}} && f(y) \\
& \text{subject to} && y = Ax \\
& && x \geq 0 \\
& && y_i \leq u_{s,k} + \delta_{s,k}^{(u)*} \quad \forall i \in \mathcal{Q}_{s,k}^+, && k = 1, \dots, K_s^{(u)}, \quad s = 1, \dots, S \\
& && y_i \geq l_{s,k} - \delta_{s,k}^{(l)*} \quad \forall i \in \mathcal{Q}_{s,k}^-, && k = 1, \dots, K_s^{(l)}, \quad s = 1, \dots, S \\
& && l_s^{\text{avg}} - \delta_s^{\text{avg},(l)*} \leq D_s^{\text{avg}}(y) \leq u_s^{\text{avg}} + \delta_s^{\text{avg},(u)*}, && s = 1, \dots, S \\
& && D_s^{\text{min}}(y) \geq l_s^{\text{min}} - \delta_s^{\text{min}*}, && s = 1, \dots, S \\
& && D_s^{\text{max}}(y) \leq u_s^{\text{max}} + \delta_s^{\text{max}*}, && s = 1, \dots, S,
\end{aligned} \tag{5}$$

Algorithm 6.2 *Two-pass algorithm with slack.*

given a dose matrix $A \in \mathbf{R}^{m \times n}$, a prescribed dose vector $d \in \mathbf{R}^m$, and a set of dose-volume constraints \mathcal{C} .

1. *First pass.* Obtain the solution $(x^*, y^*, \alpha^*, \delta^*)$ to problem (4).

for each $(\delta^*, l, p, s) \in \mathcal{C}$ **do**

2a. *Compute margins.* Calculate $\xi_i^* = y_i^* - l - \delta^*$ for all $i \in \mathcal{V}_s$.

2b. *Sort margins.* Sort $\{\xi_i^*\}_{i \in \mathcal{V}_s}$ in ascending order to form a set ξ_s .

2c. *Identify voxel subset.* Select the $\lceil \phi_s(p) \rceil$ largest values $\xi_i \in \xi_s$ and include their indices i in $\mathcal{Q}_{s,k}^-$.

end for

for each $(\delta^*, u, p, s) \in \mathcal{C}$ **do**

3a. *Compute margins.* Calculate $\xi_i^* = u + \delta^* - y_i^*$ for all $i \in \mathcal{V}_s$.

3b. *Sort margins.* Sort $\{\xi_i^*\}_{i \in \mathcal{V}_s}$ in ascending order to form a set ξ_s .

3c. *Identify voxel subset.* Select the $\lceil \phi_s(100 - p) \rceil$ largest values $\xi_i \in \xi_s$ and include their indices i in $\mathcal{Q}_{s,k}^+$.

end for

4. *Second pass.* Obtain the solution (x^{**}, y^{**}) to problem (5) using (x^*, y^*) as a warm start point.

7 Implementation

We implement our radiation treatment planning methodology with **ConRad**, a Python-embedded open-source software package based on the convex programming library, CVXPY [DB16], using the convex solvers SCS [OCPB16] and ECOS [DCB13]. **ConRad** provides a simple, intuitive interface for ingesting patient data, constructing plans based on a clinical prescription, and visualizing the dose-volume histograms of the result. It allows the user to add dose constraints using syntax familiar to clinicians. Since **ConRad** is an ordinary Python library, it can be easily integrated into existing data processing pipelines.

The following code imports a prescription, solves for the optimal treatment plan without dose constraints, and plots the DVH curves for all the patient structures. The $m \times n$ dose-influence matrix `A` can be encoded as a NumPy `ndarray` or any of several sparse representations in Python. The m -length vector `voxel_labels` enumerates the index of the assigned structure for each voxel in the patient volume.

```
import conrad

# Construct the case with no dose constraints
case = conrad.Case()
case.prescription = "/Documents/prescriptions/rx_patient_01.yaml"
case.physics.dose_matrix = A
case.physics.voxel_labels = voxel_labels
graphics = conrad.CasePlotter(case)

# Solve with a single pass and no slack
status, run = case.plan(solver="ECOS", use_slack=False, use_2pass=False)

print("Problem feasible?:\n{}".format(status))
print("Dose summary:\n{}".format(case.dose_summary_string))

# Display color-coded plot of all DVH curves
graphics.plot(run, show=True)
```

A `Case` object comprises `Anatomy`, `Physics`, `Prescription` and `PlanningProblem` objects. Prior to planning, the case's `Anatomy` and `Physics` objects must be built. The user can either build the case's `Anatomy` by adding structures programmatically (with data on each structure's name, index, identity as target/non-target, and desired dose) or by ingesting a prescription, which can be supplied as a Python dictionary or as a YAML or JSON file formatted for ConRad's parser. The minimum information required for the case's `Physics` object are the $m \times n$ dose matrix and a m -length vector of voxel labels. The case's `Prescription` object can be used to populate the `Anatomy` object or to keep track of clinical guidelines and objectives. It can also be left empty.

The case's `PlanningProblem` object builds and solves optimization problems based on the structures in the case anatomy and any constraints assigned to those structures. The `PlanningProblem` is not exposed to the user. Instead, users form a treatment plan by calling the case's `plan()` method, which returns a `bool` status indicating whether the specified problem was feasible, along with a `RunRecord` object that carries solver performance data, optimal variables, and DVH curves.

Before planning a case, the user can add, remove, or modify dose constraints to any structure. Thus, even when a case has an assigned prescription, the dose constraints attached to each structure in the case anatomy may differ from the constraints specified in the prescription. For example, the prescribed constraints may correspond to clinical guidelines,

while the constraints used during planning may be chosen arbitrarily by the user to obtain plans with desirable dose properties.

After planning a case, users can plot the DVH curves, retrieve and print summaries of dose statistics for each structure, and when applicable, display a report of whether the current plan satisfies each constraint listed in the prescription. A case can be re-planned with different objective weights or dose constraints on any structure. The ConRad library provides a `PlanningHistory` object to retain and manage results from prior runs.

The following code adds a dose-volume constraint to the PTV from our previous case, allowing at most 20% of the PTV's voxels to receive more than 70 Gy. Algorithm (6.1) is then applied to obtain an optimal beam output.

```
# Constraint allows at most 20% of PTV voxels to receive dose above 70 Gy
case.anatomy["PTV"].constraints += D(20) <= 70 * Gy

# Solve with two-pass algorithm and no slack
_, run = case.plan(solver="ECOS", use_slack=False, use_2pass=True)
print("x PASS 1: {}".format(run.x_pass1))
print("x PASS 2: {}".format(run.x_pass2))

# Plot DVH curves from first (dashed) and second pass (solid)
graphics.plot(run, show=False, ls="--")
graphics.plot(run, second_pass=True, show=True, clear=False, legend=True)
```

8 Examples

8.1 Basic Functionality

We present results illustrating the methods described in this paper: approximating dose-volume constraints via convex restrictions, two-pass refinement of plans with dose-volume constraints, and handling incompatible constraints with slack variables.

Problem Instances. We demonstrate the basic functionality on a head-and-neck case expressed as a VMAT aperture re-weighting problem. The case contains 360 apertures in four arcs, 270,000 voxels distributed across 17 planning structures, including the PTV treated to 66 Gy, two auxiliary targets treated to 60 Gy, several OARs, and generic body voxels.

To test the handling of dose-volume constraints, we plan the case with no dose constraints and then re-plan with a single dose-volume constraint applied to the PTV, namely $D(20) \leq 70$ Gy. We run the two-pass algorithm and compare the plans obtained by applying restricted and exact versions of the aforementioned dose-volume constraint. Finally, we test the slack method by planning the case with two incompatible dose-volume constraints: $D(98) \geq 66$ Gy on the PTV and $D(20) \leq 20$ Gy on the spinal cord. We compare the results from enforcing the PTV constraint alone, both constraints without slack, and both constraints with slack allowed.

Computational Details. The size of the dose matrix passed from ConRad to the convex solvers in the backend varied depending on the dose constraints. When no minimum, maximum, or dose-volume constraints were applied to a non-target structure, the submatrix for that structure was replaced with a mean dose representation, thereby eliminating $|\mathcal{V}_s| - 1$ rows from the problem matrix. In particular, the matrix representing the full dose on the targets and mean dose for non-targets had dimensions $11,141 \times 360$, and the matrix including the full dose on the spinal cord was $15,000 \times 360$. The ConRad problem request was formulated as a convex program in CVXPY and passed to a GPU-based implementation of the convex solver SCS. Calculations were performed on a cluster with 32-core, 2.20 GHz Intel Xeon E5-4620 CPU and a nVidia TitanX graphics card.

Clinical Results: Dose-Volume Constraints. Figure 4(a) depicts the DVH curves of the plan produced without any dose constraints. The PTV curve is shown in red with a dotted vertical line marking its prescribed dose of 66 Gy. The rest are DVHs for the OARs and generic body voxels. This solution to the unconstrained problem already gives a fairly good treatment plan. The DVH of the right cochlea and left parotid are pushed far left, so only 15–20% of their volume exceed 10 Gy, and almost no voxels are dosed above 30 Gy. The spinal cord receives somewhat more radiation, while the worst case is the brain with a slow, nearly linear drop-off to about 75 Gy.

The PTV curve begins to fall at 66 Gy, but does not reach zero until nearly 95 Gy. To reduce this overdosing, we add a dose-volume constraint that limits no more than 20% of the PTV to receive over 70 Gy, as indicated by the red, left-pointing arrow in Figure 4(b), and re-plan the case. The resulting DVH curves are depicted as solid lines in Figure 4(c), while the dashed curves represent the original plan. Under the new plan, the PTV curve has been pushed left at the arrow, and its drop-off around 66 Gy is steeper, meaning all voxel doses are closer to the prescription. Moreover, our OARs are minimally affected. We have reduced overdosing to the PTV without significantly increasing radiation to other organs.

Clinical Results: Two-Pass Algorithm. A close inspection of Figure 4(c) reveals a gap between the PTV curve and the DVH constraint arrow. This is due to the conservative nature of the convex restriction, which overestimates the number of voxel violations. We can eliminate this gap and improve our overall objective with the two-pass algorithm. Figure 6.1(a) shows the plan from the first pass. There is a margin of about 0.5 Gy between the PTV curve and arrow, meaning at most 20% of the PTV receives over 69.5 Gy, a more restrictive solution than required by our constraint $D(20) \leq 70$ Gy.

This margin disappears in Figure 5(b). Here, the dashed lines depict the first pass solution, and the solid lines come from the second pass. The second pass PTV curve falls precisely on the center of the left-facing arrow, meaning the dose-volume constraint is tight. In addition, the DVH curves for the right cochlea and left parotid have shifted leftward, indicating they now receive less radiation. By replacing our convex restriction with exact voxel constraints, we are able to make gains in our OAR clinical objectives while still fulfilling the DVH constraint.

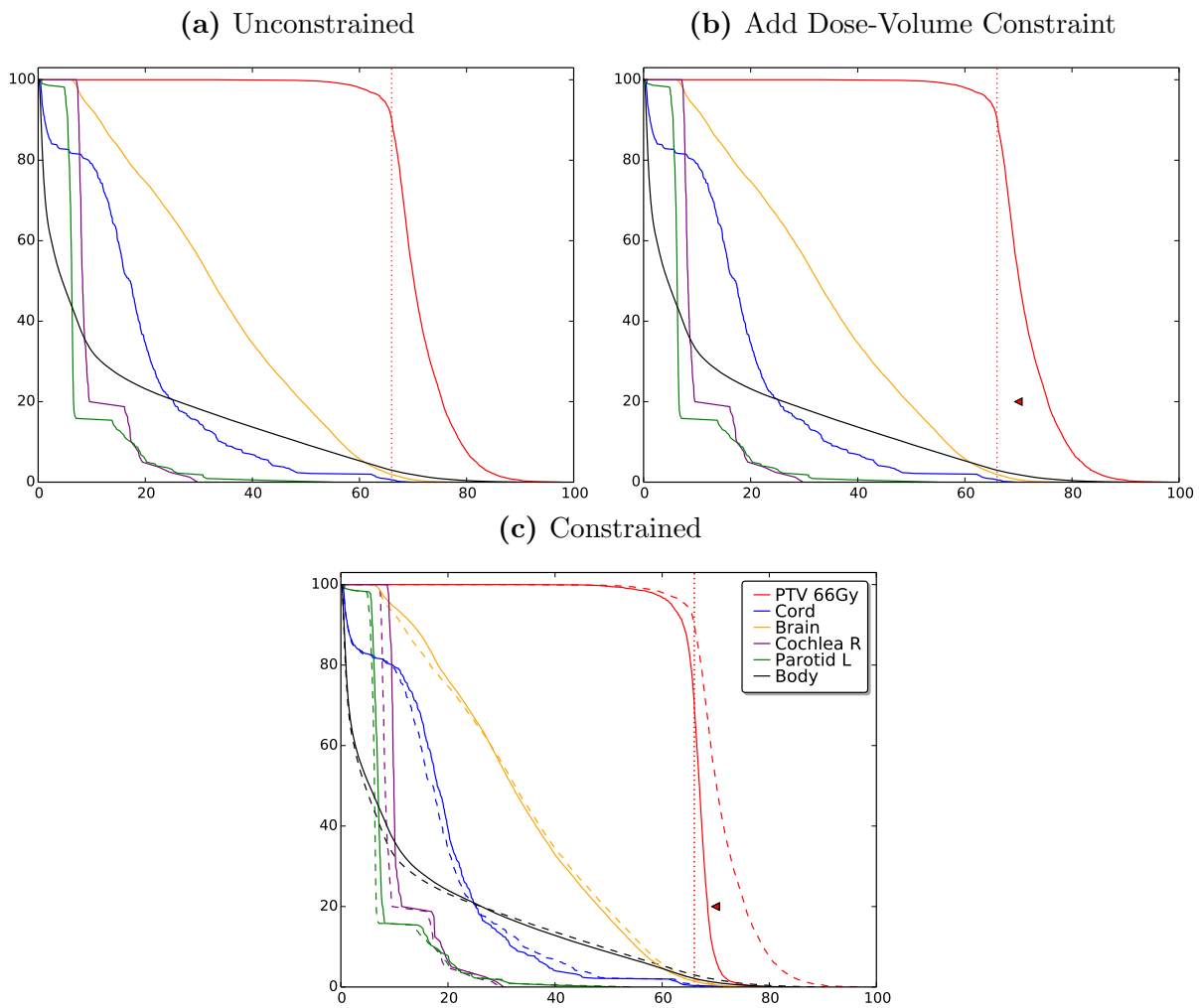


Figure 4: DVH curves for PTV and several OARs from the 4-arc VMAT head-and-neck case. (a) Plan without any dose constraints. (b) Add a dose-volume constraint $D(20) \leq 70$ Gy. (c) Re-plan with the new constraint. The unconstrained plan is shown in dashed lines.

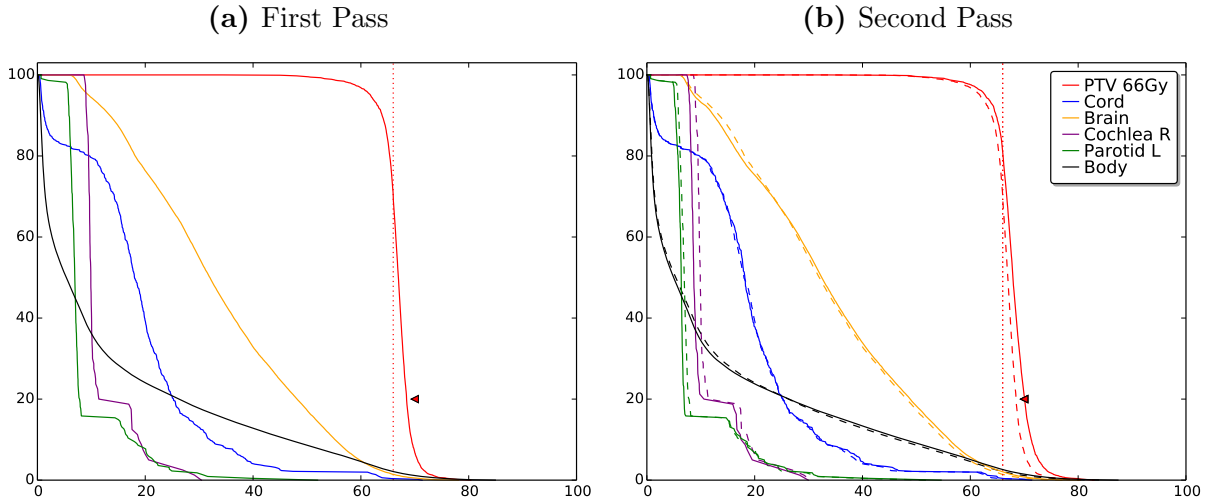


Figure 5: DVH curves for a two-pass algorithm with a single dose-volume constraint on the PTV. (a) On the first pass, the constraint is met with a margin of about 0.5 Gy. (b) On the second pass, the constraint is met tightly with small gains elsewhere.

Clinical Results: Constraints with Slack. So far, we have specified only one dose constraint. A problem may become infeasible when multiple constraints are enforced, either because the user-supplied bounds are too extreme or the convex restriction too severe in its overestimation of the voxel count. In such cases, we can still produce a plan that approximately conforms to the desired specifications by enabling slack constraints.

Figure 6(a) depicts a plan created without slack. The single PTV constraint, $D(98) \geq 66$ Gy, is met with margin. However, when we add the OAR constraint $D(20) \leq 20$ Gy, as symbolized by the blue arrow in Figure 6(b), and re-plan the case, the optimizer tells us that the problem is infeasible. It is impossible to meet both (convex restricted) dose-volume constraints exactly. We thus re-plan allowing for slack bounds on these constraints. The resulting DVH curves are plotted in Figure 6(c) with dotted lines representing the original plan and solid lines for the new plan. The PTV constraint has been relaxed by about 3 Gy, as symbolized by the red arrow shifting left behind the solid red curve to (98, 63). This small concession allows us to satisfy the OAR constraint by a wide margin.

8.2 Problem Scaling

Problem Instances. We assess the performance of our algorithm on a larger prostate FMO problem. This case contains $74,453$ voxels \times $34,848$ beamlets, encompassing a single PTV treated to 75.6 Gy, five OARs with various dose constraints, and generic body voxels. Approximately 226 million (roughly 10.6%) of the entries in the dose matrix are non-zero. In our experiments, we used only a subset of 10,000 beamlets from this matrix.

We plan the case with the prescription detailed in Table 1, which is adapted from the QUANTEC guidelines [MYJ⁺10]. The computational details are the same as in the head-

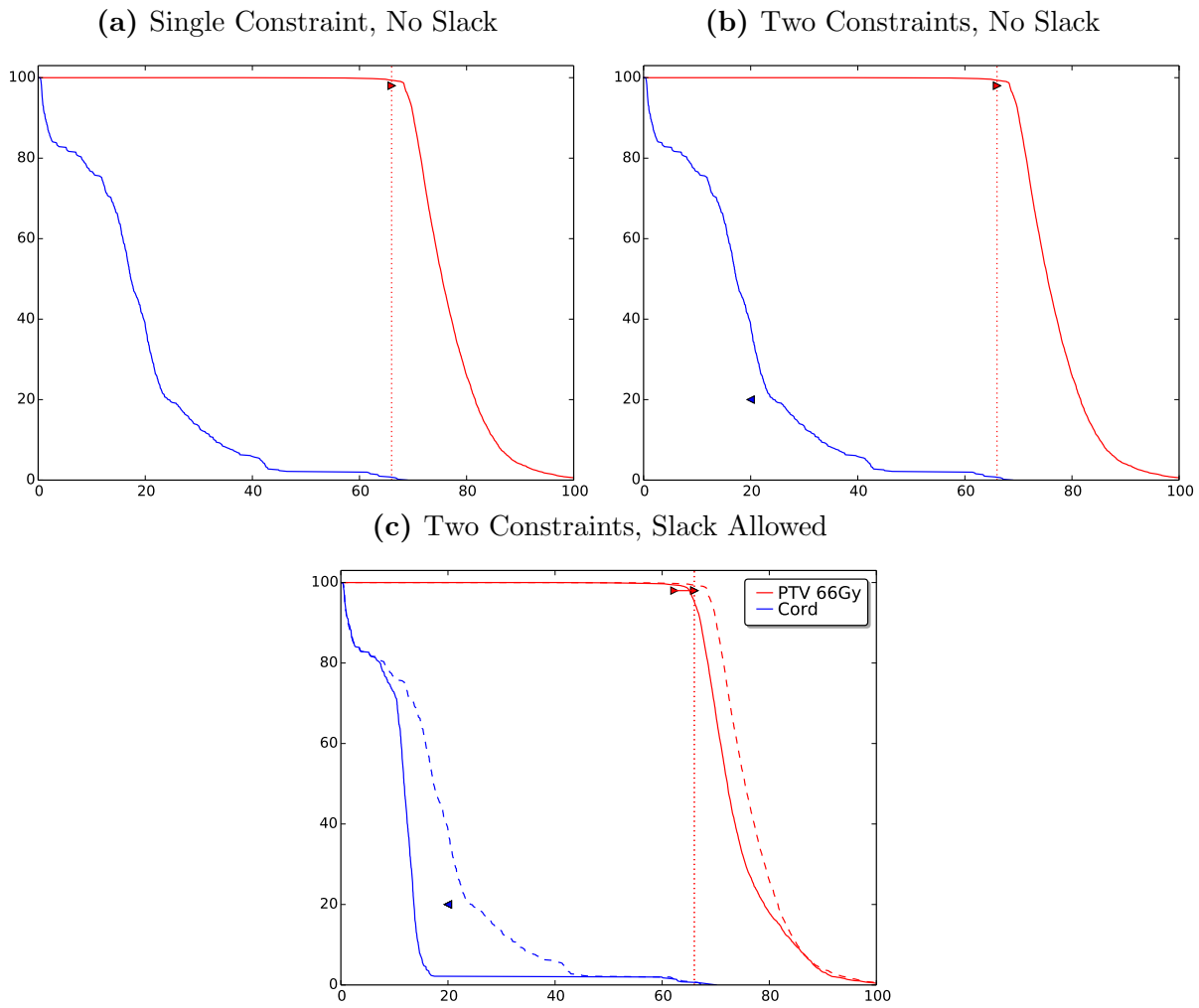


Figure 6: DVH curves for the PTV and spinal cord. (a) Plan without slack, constraining $D(98) \geq 66$ Gy in the PTV. (b) A constraint $D(20) \leq 20$ Gy is added to the spinal cord, rendering the problem infeasible. (c) Re-plan with slack allowed. The spinal cord constraint is met, but the PTV constraint relaxes by about 3 Gy.

Table 1: Prostate FMO Prescription

Structure	Target?	Dose (Gy)	Constraints (Gy)
Prostate	Yes	75.6	$D^{\text{avg}} \geq 75.6$
Urethra	No	0	$D^{\text{avg}} < 52.5$
Bladder	No	0	$D(85) < 80$ $D(75) < 75$ $D(65) < 70$ $D(50) < 65$
Rectum	No	0	$D(90) < 75$ $D(85) < 70$ $D(50) < 65$
L. Femoral Head	No	0	$D(95) < 50$
R. Femoral Head	No	0	$D(95) < 50$
Body	No	0	$D^{\text{avg}} < 52.5$

and-neck case. As before, we analyze the results from a single pass and two-pass algorithm with and without slack allowed. We then re-plan the case with only the PTV dose constraint and compare its runtime and OAR overdose to the plans produced from the full prescription.

Timing Results. Our algorithm produces a plan that satisfies all dose constraints using a single pass with slack enabled. The optimization finishes in 426.9 seconds, about 2.5x the runtime of the head-and-neck case. A second pass takes approximately the same amount of time and does not result in significantly larger constraint margins. The presence or absence of slack also has little impact on the runtime, which varies by at most 7 seconds.

If we drop all except the mean dose constraints, the problem collapses into a linear program, greatly decreasing the runtime. The size of this reduction depends on the characteristics of the affected structures and the dose influence matrix. For example, in the head-and-neck case, the runtime falls by 87% to a mere 24 seconds. Conversely, when adding dose-volume constraints, the initial constraint on a structure will have a greater impact on runtime than subsequent additions.

9 Conclusion

We have developed a convex formulation for the FMO problem that incorporates dose-volume constraints. Our model replaces each exact dose-volume constraint with a convex restriction, which overestimates the number of voxels that violate the clinician’s desired threshold. This allows us to solve the problem quickly and efficiently using standard convex optimization algorithms. We also introduce two refinements: a two-pass algorithm and a model with slack. In the former, we improve our initial solution by re-optimizing with the restrictions replaced by bounds on a subset of voxels, enabling us to achieve a better objective that still satisfies the dose-volume constraints. The latter allows for soft bounds and is useful if

the restricted constraints render the problem infeasible. We demonstrate the efficacy of our method on a VMAT head-and-neck case and a prostate case. Our algorithm consistently produces good treatment plans that fulfill all dose constraints when feasible. In problems with infeasible constraints, we are able to generate plans that minimize the dose violation while taking into account clinical goals, allowing clinicians to easily visualize trade-offs and select the plan that is best for the patient.

References

- [AGS⁺10] S. Ahmed, O. Gozbasi, M. Savelsbergh, I. Crocker, T. Fox, and E. Schreibmann. An automated intensity-modulated radiation therapy planning system. *INFORMS Journal on Computing*, 22(4):568–583, 2010.
- [AT94] R. B. Altman and R. Tombropoulos. Probabilistic constraint satisfaction: Application to radiosurgery. In *Proceedings of the Annual Symposium on Computer Application in Medical Care*. American Medical Informatics Association, 1994.
- [Bed09] J. L. Bedford. Treatment planning for volumetric modulated arc therapy. *Medical physics*, 36(11):5128–5138, 2009.
- [BMAV04] G. Bednarz, D. Michalski, P. R. Anne, and R. K. Valicenti. Inverse treatment planning using volume-based objective functions. *Physics in Medicine and Biology*, 49(12):2503–2514, 2004.
- [Bor99] T. Bortfeld. Optimized planning using physical objectives and constraints. *Seminars in Radiation Oncology*, 9(1):20–34, 1999.
- [BV04] S. Boyd and L. Vandenberghe. *Convex Optimization*. Cambridge University Press, 2004.
- [CBIXG08] Y. Censor, A. Ben-Israel, Y. Xiao, and J. M. Galvin. On linear infeasibility arising in intensity-modulated radiation therapy inverse planning. *Linear Algebra and its Applications*, 428(5):1406–1420, 2008.
- [CLI⁺98] P. S. Cho, S. Lee, R. J. Marks II, S. Oh, S. G. Sutlief, and M. H. Phillips. Optimization of intensity modulated beams with volume constraints using two methods: Cost function minimization and projections onto convex sets. *Medical Physics*, 25(4):435–443, 1998.
- [CMP14] T. C. Y. Chan, H. Mahmoudzadeh, and T. G. Purdie. A robust-CVaR optimization approach with applications to breast cancer therapy. *European Journal of Operational Research*, 238(3):876–885, 2014.
- [CX02] C. Cotrutz and L. Xing. Using voxel-dependent importance factors for interactive DVH-based dose optimization. *Physics in Medicine and Biology*, 47(10):1659–1669, 2002.
- [DB16] S. Diamond and S. Boyd. CVXPY: A Python-embedded modeling language for convex optimization. *Journal of Machine Learning Research*, 17(83):1–5, 2016.
- [DCB13] A. Domahidi, E. Chu, and S. Boyd. ECOS: An SOCP solver for embedded systems. In *European Control Conference*, pages 3071–3076, 2013.

- [Dea97] J. O. Deasy. Multiple local minima in radiotherapy optimization problems with dose-volume constraints. *Medical Physics*, 24(7):1157–1161, 1997.
- [DFV13] C. Davino, M. Furno, and D. Vistocco. *Quantile regression*. Wiley, 2013.
- [DLR⁺13] P. Dong, P. Lee, D. Ruan, T. Long, E. Romeijn, Y. Yang, D. Low, P. Kupelian, and K. Sheng. 4π non-coplanar liver sbrt: a novel delivery technique. *International Journal of Radiation Oncology* Biology* Physics*, 85(5):1360–1366, 2013.
- [DZ03] J. Dai and Y. Zhu. Conversion of dose-volume constraints to dose limits. *Physics in Medicine and Biology*, 48(23):3927–3941, 2003.
- [EGHS08] M. Ehrgott, Ç. Güler, H. W. Hamacher, and L. Shao. Mathematical optimization in intensity modulated radiation therapy. *4OR*, 6(3):199–262, 2008.
- [GHBF⁺13] C. Glide-Hurst, M. Bellon, R. Foster, C. Altunbas, M. Speiser, M. Altman, D. Westerly, N. Wen, B. Zhao, and M. Miften. Commissioning of the Varian TrueBeam linear accelerator: A multi-institutional study. *Medical physics*, 40(3):031719, 2013.
- [Gro12] Radiation Therapy Oncology Group. H-1115: Phase III trial of dose escalated radiation therapy and standard androgen deprivation therapy (ADT) with a GnRH agonist vs. dose escalated radiation therapy and enhanced ADT with a GnRH agonist and TAK-700 for men with high risk prostate cancer. <http://rpc.mdanderson.org/rpc/credentialing/files/1115.pdf>, May 2012.
- [Gro16] Radiation Therapy Oncology Group. H-1016: Phase III trial of radiotherapy plus cetuximab versus chemoradiotherapy in HPV-associated oropharynx cancer. <https://www.rtog.org/ClinicalTrials/ProtocolTable/StudyDetails.aspx?study=1016>, February 2016.
- [HCB06a] T. Halabi, D. Craft, and T. Bortfeld. Dose-volume objectives in multi-criteria optimization. *Physics in Medicine and Biology*, 51(15):3809–3818, 2006.
- [HCB06b] T. Halabi, D. Craft, and T. Bortfeld. Dose-volume objectives in multi-criteria optimization. *Physics in Medicine and Biology*, 51:3809–3818, 2006.
- [HK02] H. W. Hamacher and K.-H. Küfer. Inverse radiation therapy planning— a multiple objective optimization approach. *Discrete Applied Mathematics*, 118(1):145–161, 2002.
- [Höl03] A. Hölder. Designing radiotherapy plans with elastic constraints and interior point methods. *Health Care Management Science*, 6(1):5–16, 2003.

- [HSSF02] D. Hristov, P. Stavrev, E. Sham, and B. G. Fallone. On the implementation of dose-volume objectives in gradient algorithms for inverse treatment planning. *Medical Physics*, 29(5):848–856, 2002.
- [JBBS90] T. Bortfeld J., Bürkelbach, R. Boesecke, and W. Schlegel. Methods of image reconstruction from projections applied to conformation radiotherapy. *Physics in Medicine and Biology*, 35(10):1423–1434, 1990.
- [JCM⁺98] J. R. Adler Jr, S. D. Chang, M. J. Murphy, J. Doty, P. Geis, and S. L. Hancock. The cyberKnife: A frameless robotic system for radiosurgery. *Stereotactic and functional neurosurgery*, 69(1-4):124–128, 1998.
- [KME⁺05] M. L. Kessler, D. L. Mcshan, M. A. Epelman, K. A. Vineberg, A. Eisbruch, T. S. Lawrence, and B. A. Fraass. Costlets : A generalized approach to cost functions for automated optimization of IMRT treatment plans. *Optimization and Engineering*, 6(4), 2005.
- [LBU⁺90] M. Langer, R. Brown, M. Urie, J. Leong, M. Stracher, and J. Shapiro. Large scale optimization of beam weights under dose-volume restrictions. *International Journal of Radiation Oncology Biology Physics*, 18(4):887–893, 1990.
- [LFC00] E. Lee, T. Fox, and I. Crocker. Optimization of radiosurgery treatment planning via mixed integer programming. *Medical Physics*, 27(5):995–1004, 2000.
- [LFC03] E. Lee, T. Fox, and I. Crocker. Integer programming applied to intensity-modulated radiation therapy treatment planning. *Annals of Operations Research*, 119(1–4):165–181, 2003.
- [LL87] M. Langer and J. L. Leong. Optimization of beam weights under dose-volume restrictions. *International Journal of Radiation Oncology Biology Physics*, 13(8):1255–1260, 1987.
- [LX13] R. Li and L. Xing. An adaptive planning strategy for station parameter optimized radiation therapy (sport): Segmentally boosted vmat. *Medical physics*, 40(5):050701, 2013.
- [MHS⁺93] T. R. Mackie, T. Holmes, S. Swerdloff, P. Reckwerdt, J. O. Deasy, J. Yang, B. Paliwal, and T. Kinsella. Tomotherapy: A new concept for the delivery of dynamic conformal radiotherapy. *Medical Physics*, 20(6):1709–1719, 1993.
- [MM93] G. S. Mageras and R. Mohan. Application of fast simulated annealing to optimization of conformal radiation treatments. *Medical Physics*, 20(3):639–647, 1993.
- [MPC16] H. Mahmoudzadeh, T. G. Purdie, and T. C. Y. Chen. Constraint generation methods for robust optimization in radiation therapy. *Operations Research for Health Care*, 8:85–90, 2016.

- [MXCG04] D. Michalski, Y. Xiao, Y. Censor, and J. M. Galvin. The dose-volume constraint satisfaction problem for inverse treatment planning with field segments. *Physics in Medicine and Biology*, 49(4):601–616, 2004.
- [MYJ⁺10] L. B. Marks, E. D. Yorke, A. Jackson, R. K. Ten Haken, L. S. Constine, A. Eisbruch, S. M. Bentzen, J. Nam, and J. O. Deasy. Use of normal tissue complication probability (ntcp) models in the clinic. *International Journal of Radiation Oncology, Biology, and Physics*, 76(3 Suppl):S10–S19, 2010.
- [OCPB16] B. O’Donoghue, E. Chu, N. Parikh, and S. Boyd. Conic optimization via operator splitting and homogeneous self-dual embedding. *Journal of Optimization Theory and Applications*, 169(3):1042–1068, 2016.
- [RAD⁺03] H. E. Romeijn, R. K. Ahuja, J. F. Dempsey, A. Kumar, and J. G. Li. A novel linear programming approach to fluence map optimization for intensity modulated radiation therapy treatment planning. *Physics in Medicine and Biology*, 48(21):3521–3542, 2003.
- [RAJFDK06] H. E. Romeijn, R. K. Ahuja, J. F. J. F. Dempsey, and A. Kumar. A new linear programming approach to radiation therapy treatment planning problems. *Operations Research*, 54(2):201–216, 2006.
- [RLMB91] I. I. Rosen, R. G. Lane, S. M. Morrill, and J. A. Belli. Treatment plan optimization using linear programming. *Medical Physics*, 18(2):141–152, 1991.
- [RU00] R. Rockafellar and S. Uryasev. Optimization of conditional value-at-risk. *Journal of Risk*, 2:21–42, 2000.
- [RU02] R. Rockafellar and S. Uryasev. Conditional value-at-risk for general loss distributions. *Journal of Banking and Finance*, 26(7):1443–1471, 2002.
- [SC98] S. V. Spirou and C. Chui. A gradient inverse planning algorithm with dose-volume constraints. *Medical Physics*, 25(3):321–333, 1998.
- [SFOM99] D. M. Shepard, M. C. Ferris, G. H. Olivera, and T. R. Mackie. Optimizing the delivery of radiation therapy to cancer patients. *Siam Review*, 41(4):721–744, 1999.
- [SORM00] D. M. Shepard, G. H. Olivera, P. J. Reckwerdt, and T. R. Mackie. Iterative approaches to dose optimization in tomotherapy. *Physics in Medicine and Biology*, 45(1):69–90, 2000.
- [TBNN03] C. Thieke, T. Bortfeld, A. Niemierko, and S. Nill. From physical dose constraints to equivalent uniform dose constraints in inverse radiotherapy planning. *Medical Physics*, 30(9):2332–2339, 2003.

- [Web89] S. Webb. Optimization of conformal radiotherapy dose distribution by simulated annealing. *Physics in Medicine and Biology*, 34(10):1349–1370, 1989.
- [Web92] S. Webb. Optimization by simulated annealing of three-dimensional, conformal treatment planning for radiation fields defined by a multileaf collimator: II. inclusion of two-dimensional modulation of the X-ray intensity. *Physics in Medicine and Biology*, 37(8):1689–1704, 1992.
- [WM00] Q. Wu and R. Mohan. Algorithms and functionality of an intensity modulate radiotherapy optimization system. *Medical Physics*, 27(4):701–711, 2000.
- [WM02] Q. Wu and R. Mohan. Multiple local minima in IMRT optimization based on dose-volume criteria. *Medical Physics*, 29(7):1514–1527, 2002.
- [WRS⁺11] B. Wu, F. Ricchetti, G. Sanguineti, M. Kazhdan, P. Simari, R. Jaques, R. Taylor, and T. McNutt. Data-driven approach to generating achievable dose-volume histogram objectives in intensity-modulated radiotherapy planning. *International Journal of Radiation Oncology Biology Physics*, 79(4):1241–1247, 2011.
- [WS00] E. Woudstra and P. R. M. Storchi. Constrained treatment planning using sequential beam selection. *Physics in Medicine and Biology*, 45(23):2133–2149, 2000.
- [XC96] L. Xing and G. T. Y. Chen. Iterative methods for inverse treatment planning. *Physics in Medicine and Biology*, 41(10):2107–2123, 1996.
- [XHS⁺98] L. Xing, R. J. Hamilton, D. Spelbring, C. A. Pelizzari, G. T. Y. Chen, and A. L. Boyer. Fast iterative algorithms for three-dimensional inverse treatment planning. *Medical Physics*, 25(10):1845–1849, 1998.
- [ZLL⁺14] M. Zarepisheh, T. Long, N. Li, Z. Tian, H. E. Romeijn, X. Jia, and S. B. Jiang. A DVH-guided IMRT optimization algorithm for automatic treatment planning and adaptive radiotherapy replanning. *Medical Physics*, 41(6):061711, 2014.
- [ZLLM14] M. Zaghian, G. Lim, W. Liu, and R. Mohan. An automatic approach for satisfying dose-volume constraints in linear fluence map optimization for IMPT. *Journal of Cancer Therapy*, 5(2):198–207, 2014.
- [ZM06] Y. Zhang and M. Merritt. Dose-volume-based IMRT fluence optimization: A fast least-squares approach with differentiability. Technical Report TR06-11, Department of Computational and Applied Mathematics, Rice University, Houston, TX, USA, 2006.

- [ZST⁺13] M. Zarepisheh, M. Shakourifar, G. Trigila, P. S. Ghomi, S. Couzens, A. Abebe, L. Noreña, W. Shang, S. B. Jiang, and Y. Zinchenko. A moment-based approach for dvh-guided radiotherapy treatment plan optimization. *Physics in Medicine and Biology*, 58(6):1869–1887, 2013.