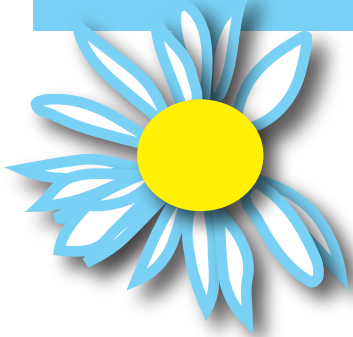


# ICPSR Summer Program



## in Quantitative Methods of Social Research

### Understanding the Development of Young Children from an Ecological Perspective

Dates: **August 1–4, 2006**

Location: **Ann Arbor, MI**

Fee: **None**

**Instructor(s):** Margaret Burchinal, University of North Carolina, Chapel Hill; Lorraine McKelvey, University of Arkansas for Medical Sciences; (TBD) National Center for Education Statistics; (TBD) Westat, Inc.

This workshop is sponsored by the **Child Care and Early Education Research Connections** project, with support from the Child Care Bureau, Administration for Children and Families, U.S. Department of Health and Human Services. It is designed as an introduction to key datasets that can be used to analyze the development of young children in multiple contexts and to assess the impact of early experiences on child outcomes. The workshop will feature the following four datasets: Early Childhood Longitudinal Study Birth Cohort (ECLS-B), Early Head Start Research and Evaluation Project (EHSRE), Head Start Family and Child Experiences Survey (FACES), and National Center for Educational Development and Learning Multi-State Study of Pre-Kindergarten, 2001–2003.

Additional information about each of these datasets is available through the *Research Connections* Web site: **www.childcareresearch.org**. Participants will receive instruction about each dataset, including key research questions, study design and methodology, strengths and limitations, considerations when using the data, and key findings. Similarities and differences between the datasets will be highlighted as well as opportunities for further secondary analysis. The workshop will focus on one dataset per day, meeting for eight hours each day, which will be divided between classroom lecture and discussion and an optional computer lab session during which students may explore the data through hands-on computer exercises.

Enrollment in this course is limited. Applications must include a vita and cover letter summarizing research interests and experience, as well as a letter of support from a senior faculty member, mentor, or advisor if the applicant is a graduate student, post-doctoral scholar, or junior faculty/researchers. Admitted graduate students, post-doctoral scholars, and junior faculty/researchers will also be considered for one of a limited number of monetary awards to offset transportation, lodging, and per diem expenses. Individuals applying for the course should check the Competitive Three- to Five-Day box on the application form. **Applications are due by Wednesday, May 31, 2006.**

Questions? E-mail [contact@childcareresearch.org](mailto:contact@childcareresearch.org).

[www.icpsr.umich.edu/sumprog](http://www.icpsr.umich.edu/sumprog)