

Continuing Studies CS 21 · Stanford University

Exercise 7

Part A: The HTML file (inclass.html)

```
<html>
<head>
  <title>STUDENT'S Home Page</title>
  <link rel="stylesheet" type="text/css" href="style.css">
</head>

<body>
<h1>
  <span class="firstname">FIRST NAME</span>
  <span class="lastname">LAST NAME</span>
</h1>

<p>
Welcome to my in-class home page! As is the case with many webpages, mine is still
<em>under construction</em>!
</p>

<p>
I created this page in a
<a href="http://continuingstudies.stanford.edu">
  
  Continuing Studies
</a>

class at

<a href="http://www.stanford.edu">
  
  Stanford University
</a>.
</p>

<p>
The website for my class is <a href="http://www.stanford.edu/group/csp/cs21">
http://www.stanford.edu/group/csp/cs21/</a>.
</p>

<address>
  Last Updated: TODAY'S DATE
  <br />Copyright &#169; 2004, STUDENT
</address>

</body>
</html>
```

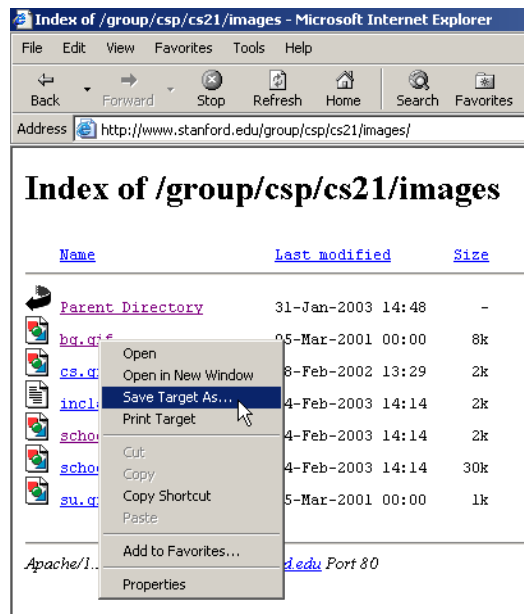
Part B: The CSS file (style.css)

```
body {font-family: Verdana; color: #000000;
  background: green url(http://www.stanford.edu/group/csp/cs21/images/bg.gif); }
address {font-family: Times; font-size: 9px; }
.firstname {font-family: Arial; color: red; }
.lastname {font-family: Courier; color: #fff; }
```

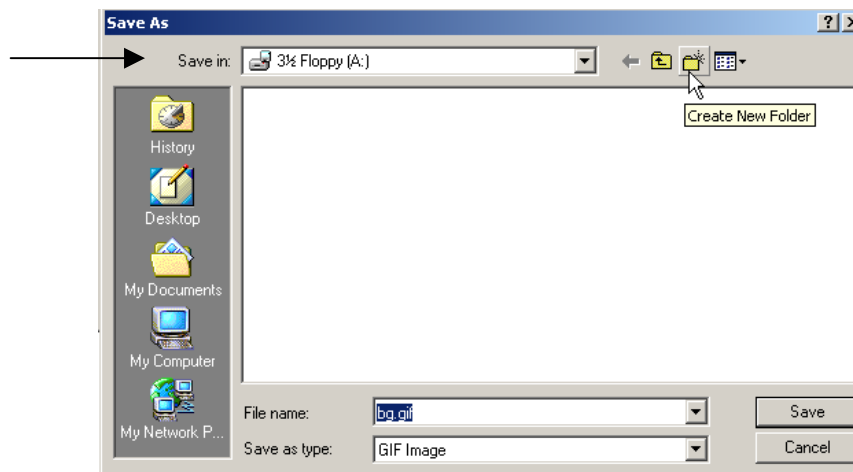
EXERCISE EIGHT - PART 1

Download "cs.gif", "su.gif", and "bg.gif" from <http://www.stanford.edu/group/csp/cs21/images> to a folder called images on your floppy disk, then copy them to the your tripod account.

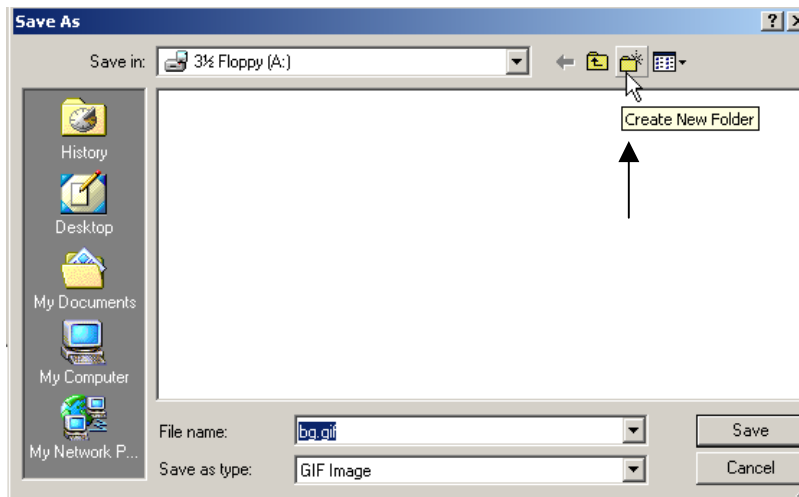
- 1) Launch **Internet Explorer**.
- 2) Go to **<http://www.stanford.edu/group/csp/cs21/images>**
- 3) Right-click the link **bg.gif** and choose **Save Target As**



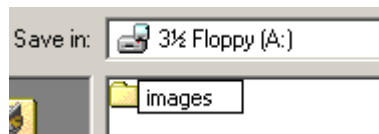
- 4) In the **Save in** field, select **3 1/2 Floppy**.



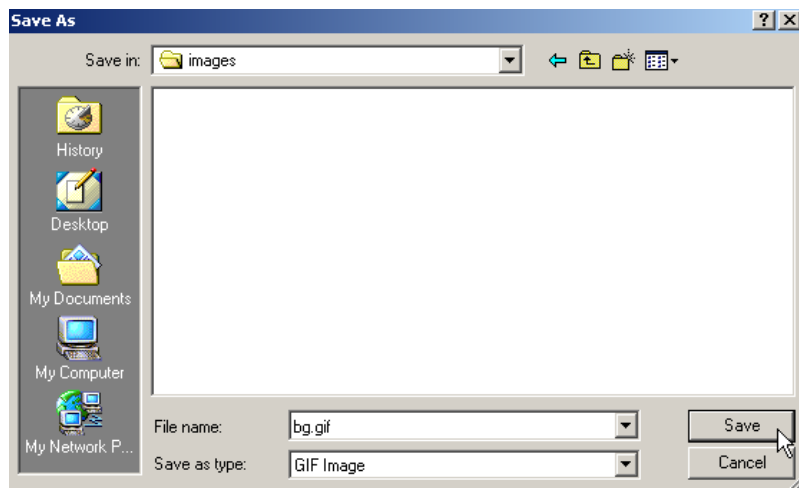
5) Click the **Create New Folder** icon.



6) Enter **images** (NOT Images)



7) Double-click the **images** folder, then click **Save**.



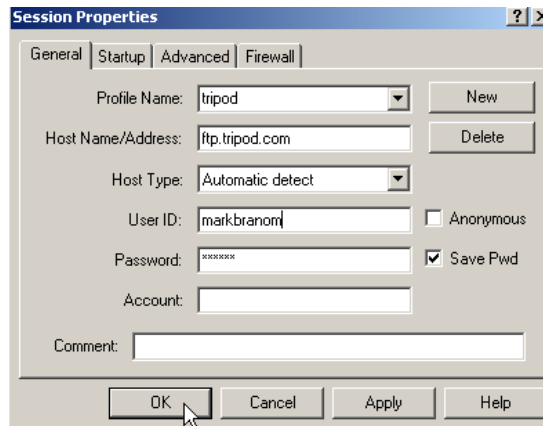
8) Right-click **cs.gif** and choose **Save Target As**

9) Make sure the **Save in** field says **images**, then click **Save**.

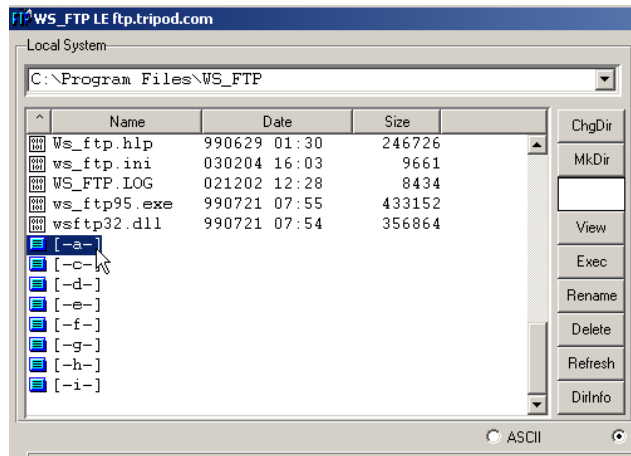
10) Right-click **su.gif** and choose **Save Target As**

11) Make sure the **Save in** field says **images**, then click **Save**.

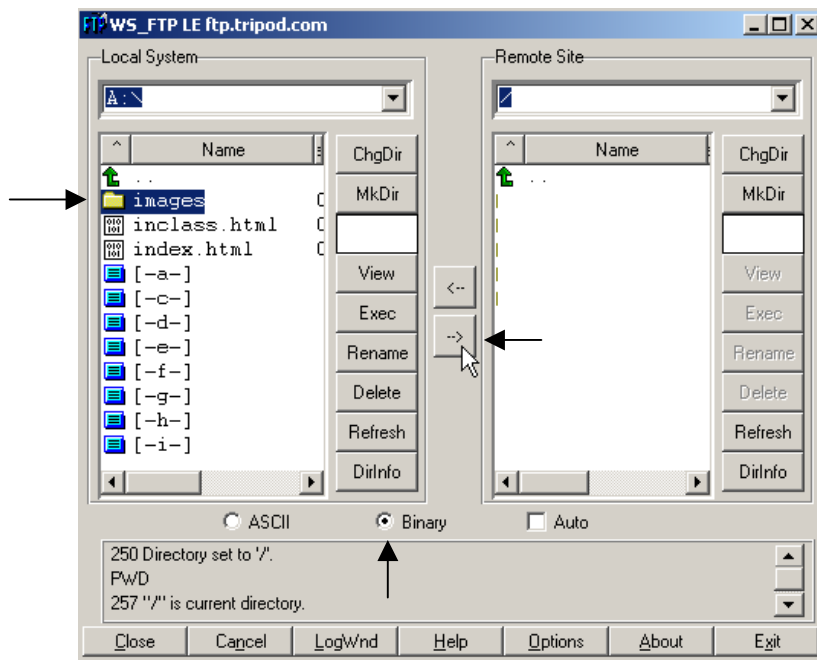
12) Launch **WSFTP**, enter in the pertinent information, then click **OK**.



13) On the **Local System** side, scroll down and double-click **[-A-]**.



14) Single-click **images**. Single-click **binary**. Single-click the arrow pointing from the **Local System** side to the **Remote Site** side.



EXERCISE EIGHT - PART 2

Change the URLs for the images in your HTML file to reflect their new locations (no longer on <http://www.stanford.edu/group/csp/cs21/images/>)

Part A: The HTML file (inclass.html)

```
<html>
<head>
  <title>STUDENT'S Home Page</title>
  <link rel="stylesheet" type="text/css" href="style.css">
</head>

<body>
<h1>
  <span class="firstname">FIRST NAME</span>
  <span class="lastname">LAST NAME</span>
</h1>

<p>
Welcome to my in-class home page! As is the case with many webpages, mine is still
<em>under construction</em>!
</p>

<p>
I created this page in a
<a href="http://continuingstudies.stanford.edu">
  
  Continuing Studies
</a>

class at

<a href="http://www.stanford.edu">
  
  Stanford University
</a>.
</p>

<p>
The website for my class is <a href="http://www.stanford.edu/group/csp/cs21">
http://www.stanford.edu/group/csp/cs21/</a>.
</p>

<address>
  Last Updated: TODAY'S DATE
  <br />Copyright &#169; 2004, STUDENT
</address>

</body>
</html>
```

Part B: The CSS file (style.css)

```
body {font-family: Verdana; color: #000000;
  background: green url(images/bg.gif); }
address {font-family: Times; font-size: 9px; }
.firstname {font-family: Arial; color: red; }
.lastname {font-family: Courier; color: #fff; }
```

EXERCISE NINE - IMAGEMAPS

```
<html>
<head>
  <title>STUDENT'S Home Page</title>
  <link rel="stylesheet" type="text/css" href="style.css">
</head>

<body>
<h1>
  <span class="firstname">FIRST NAME</span>
  <span class="lastname">LAST NAME</span>
</h1>

<p>
Welcome to my in-class home page! As is the case with many webpages, mine is still
<em>under construction</em>!
</p>

<p>
I created this page in a
<a href="http://continuingstudies.stanford.edu">
  
  Continuing Studies
</a>

class at

<a href="http://www.stanford.edu">
  
  Stanford University
</a>.
</p>

<p>
The website for my class is <a href="http://www.stanford.edu/group/csp/cs21">
http://www.stanford.edu/group/csp/cs21</a>.
</p>

<p>


<map name="schools">
  <area shape="rect" coords="6,6,85,35" href="http://www.stanford.edu" target="_blank"
    alt="Stanford University" title="Stanford University" />

  <area shape="rect" coords="6,40,85,70" href="http://www.berkeley.edu" target="_blank"
    alt="UC Berkeley" title="UC Berkeley" />

  <area shape="rect" coords="6,75,85,105" href="http://www.harvard.edu" target="_blank"
    alt="Harvard University" title="Harvard University" />

  <area shape="rect" coords="6,110,85,140" href="http://www.yale.edu" target="_blank"
    alt="Yale University" title="Yale University" />
</map>
</p>

<address>
  Last Updated: TODAY'S DATE
  <br />Copyright &#169; 2004, STUDENT
</address>
</body>
</html>
```