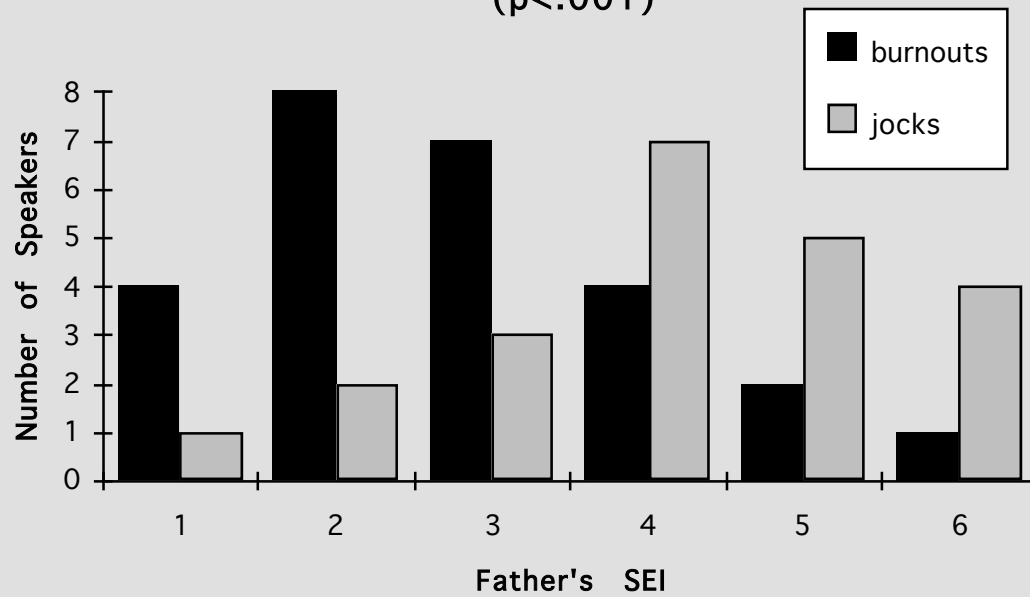
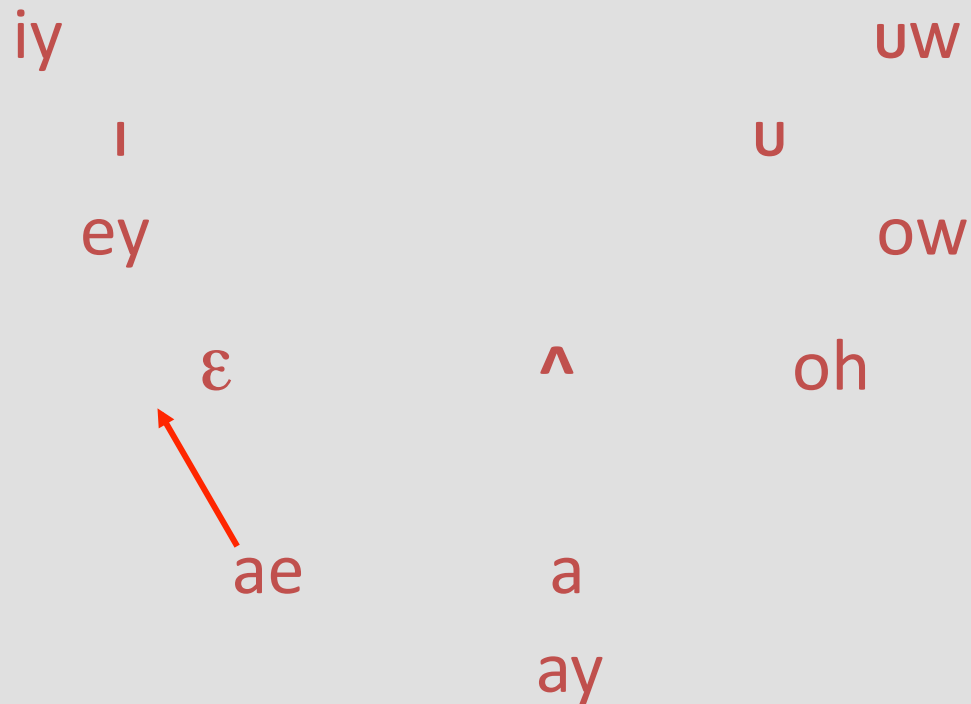


# J/B Class

Category Affiliation and Father's SEI  
( $p < .001$ )

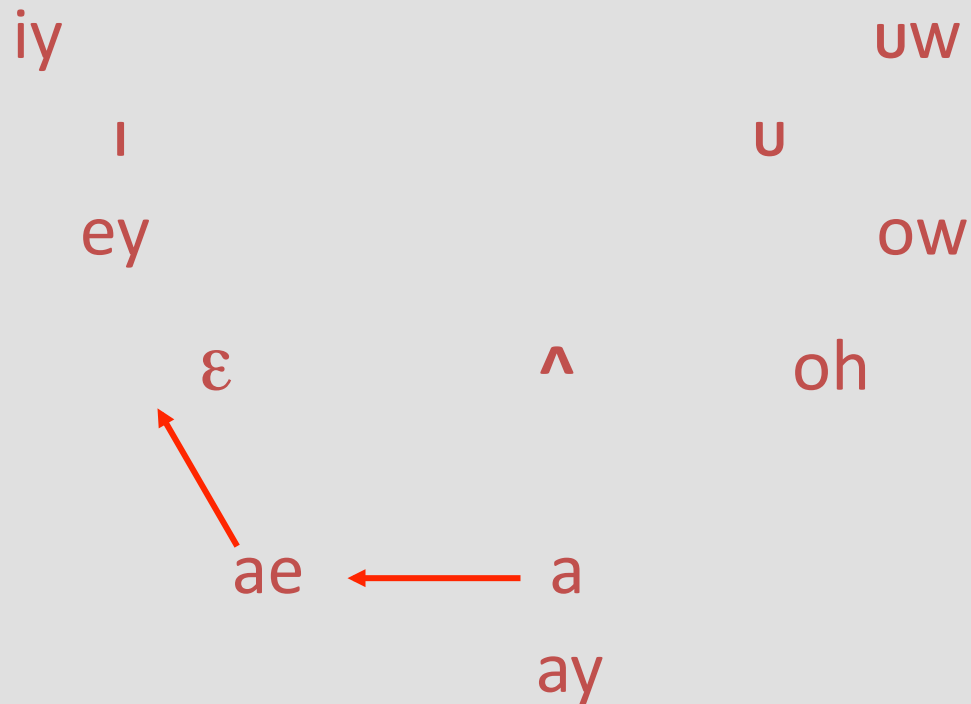


# Northern Cities Shift (e)



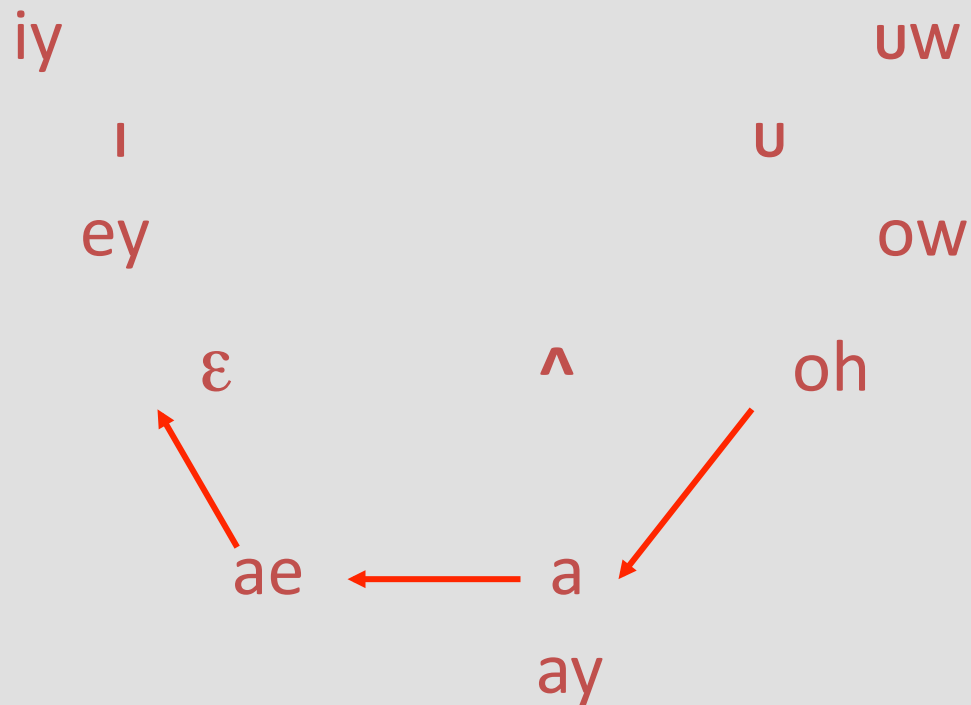
**laughs at it**

# Northern Cities Shift (e)



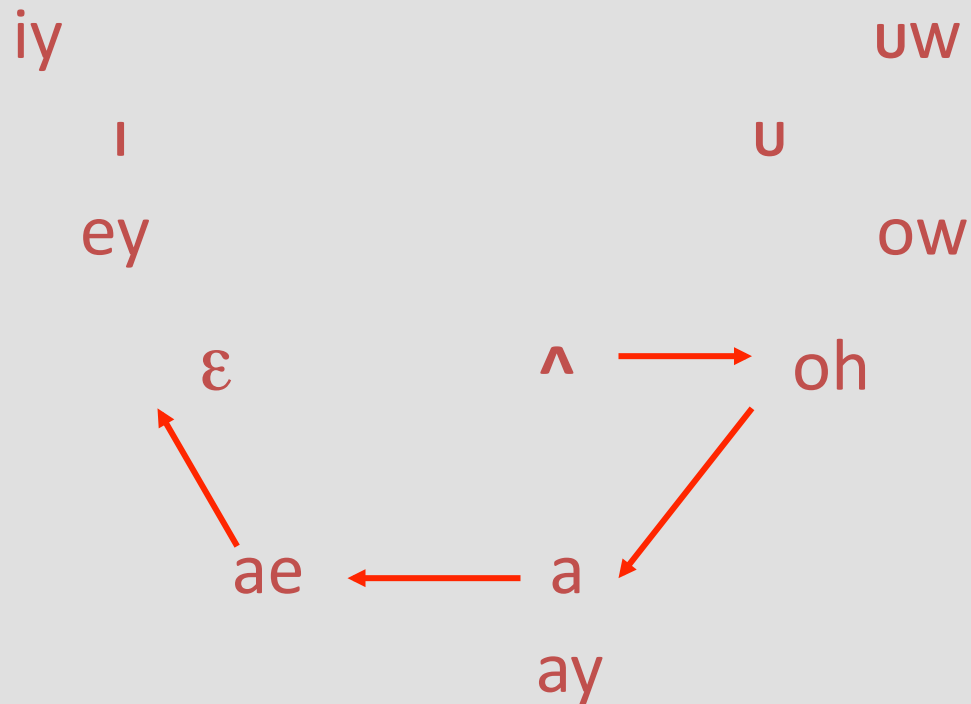
on

# Northern Cities Shift (e)



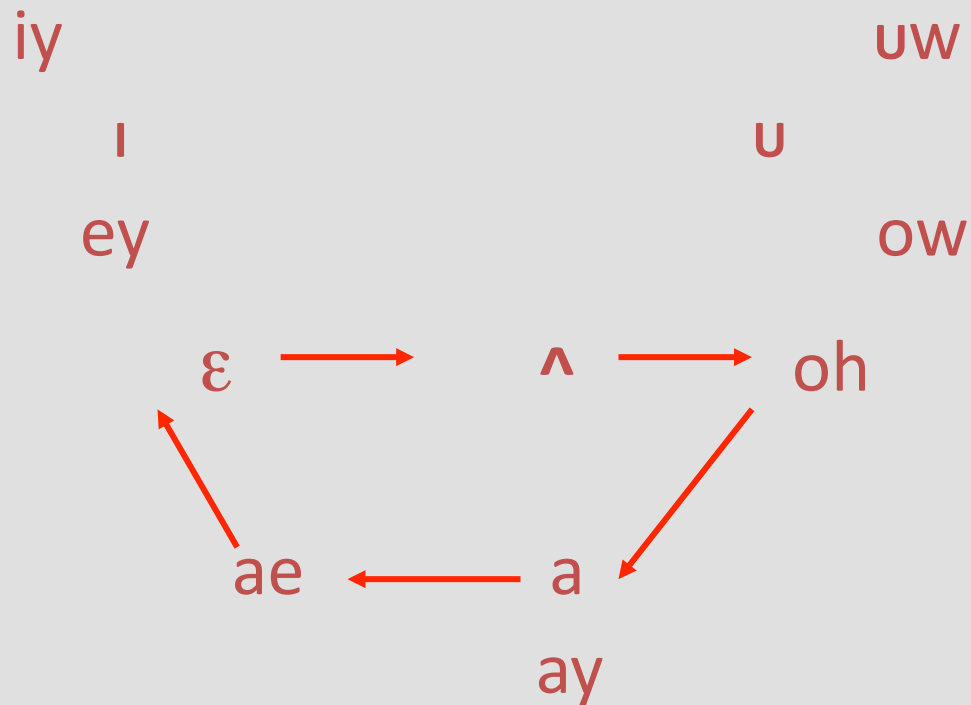
**all**

# Northern Cities Shift (e)



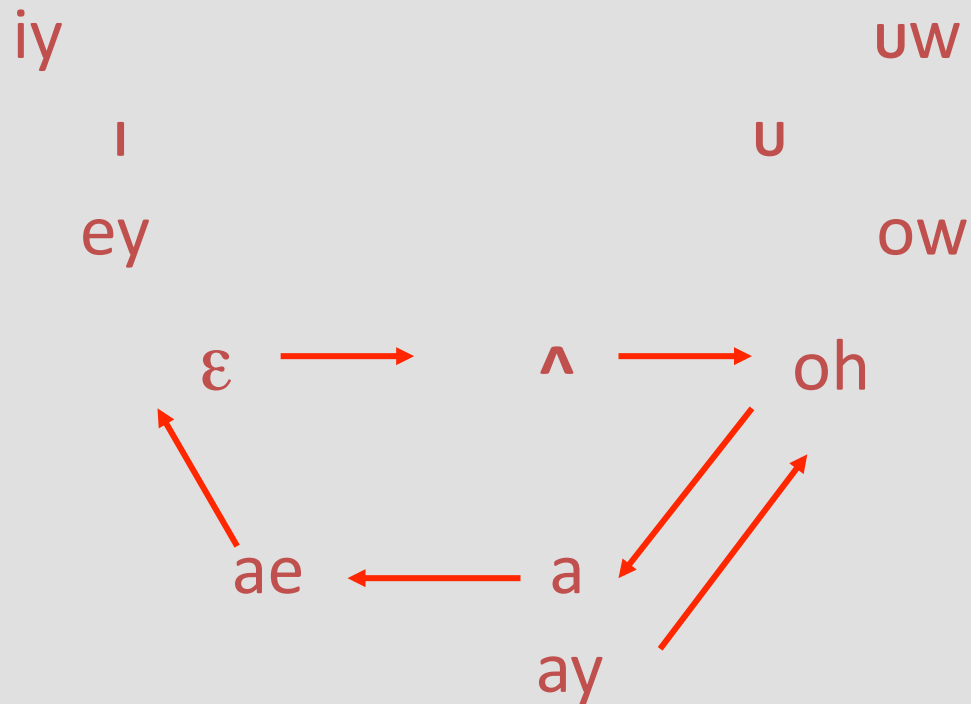
**lunch**

# Northern Cities Shift (e)



**Zeppelin**

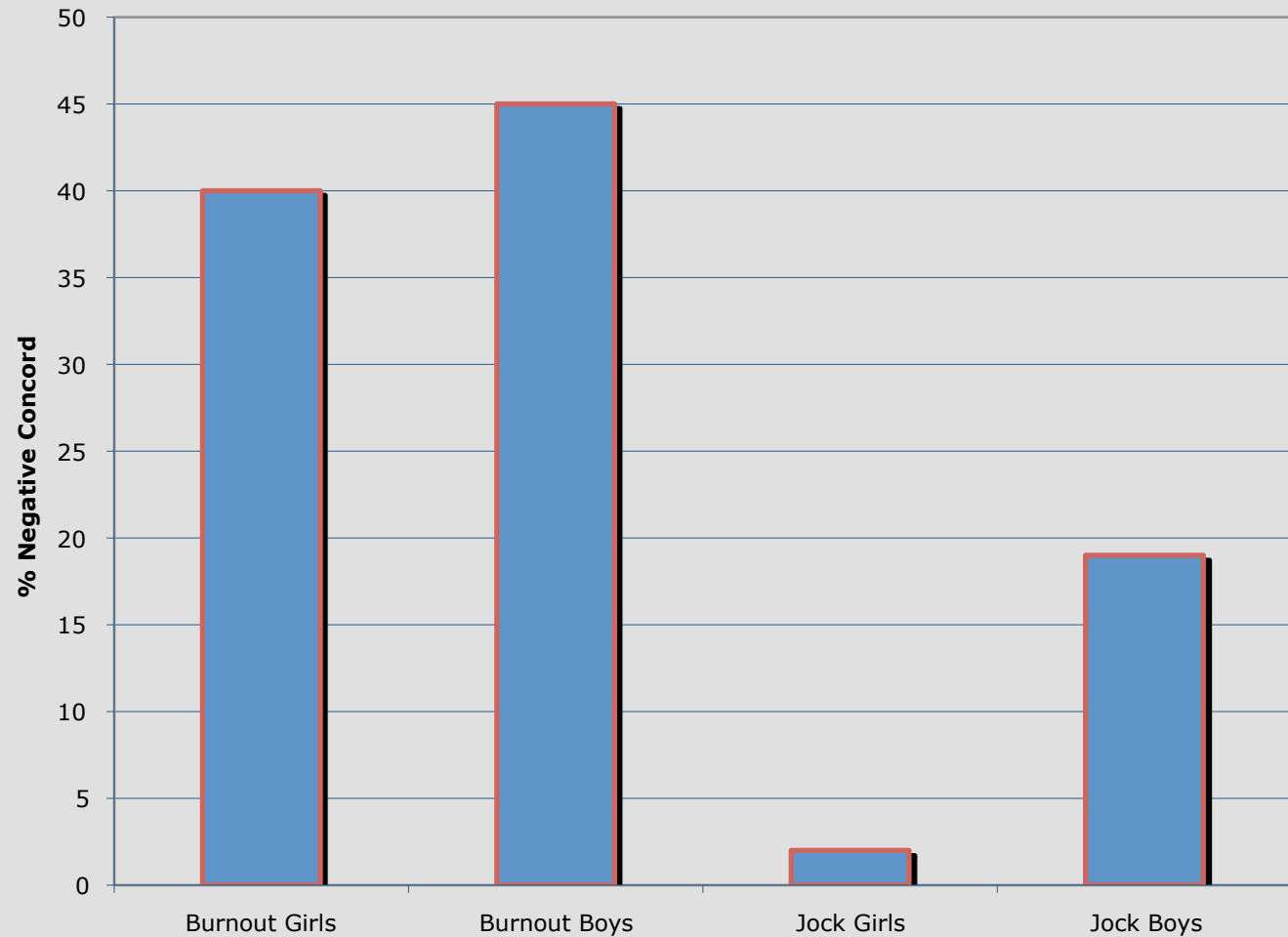
# Northern Cities Shift (e)



**typing**

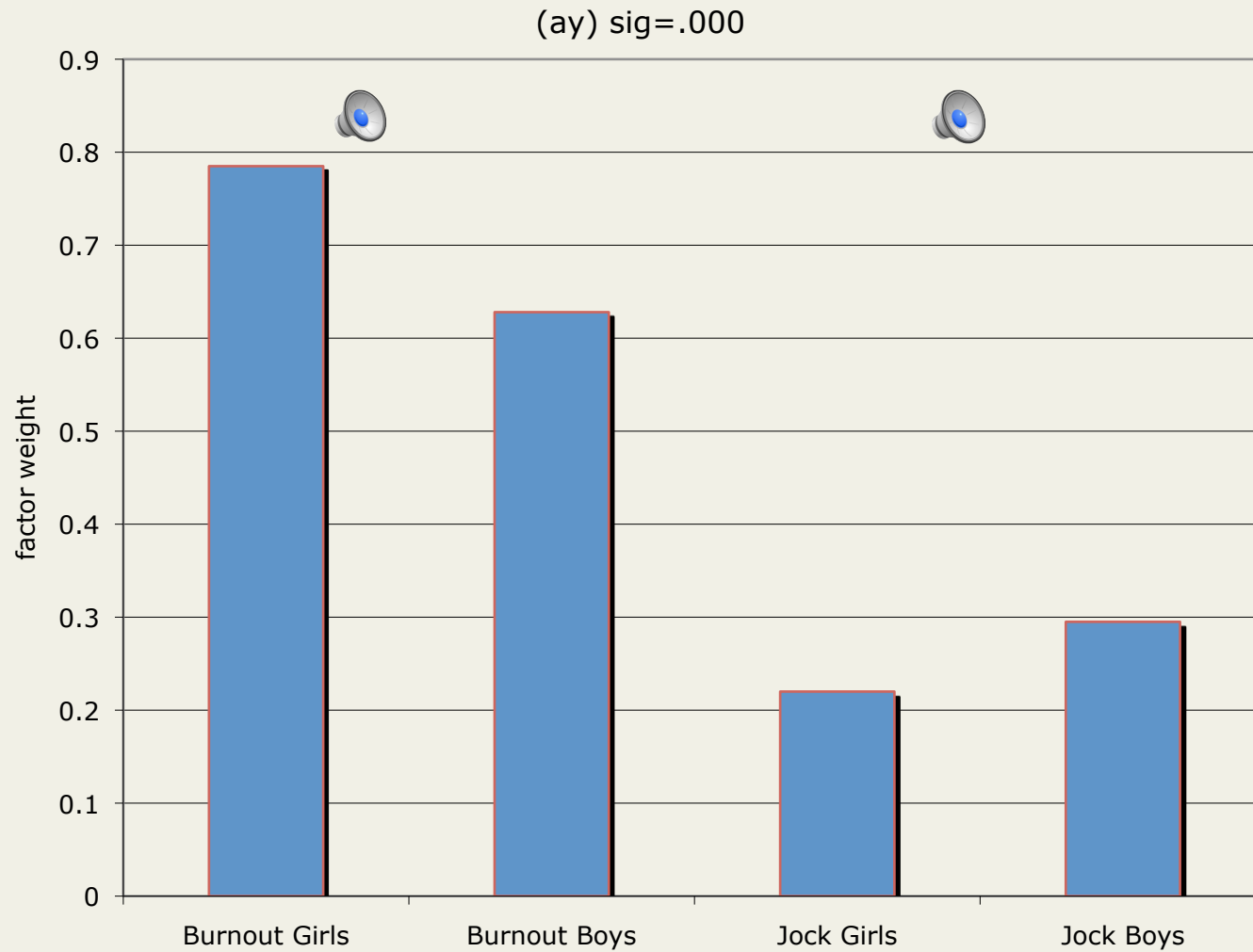
ECKERT, PENELOPE. 2000. Linguistic variation as social practice.  
Oxford: Blackwell.

Negative  
Concord

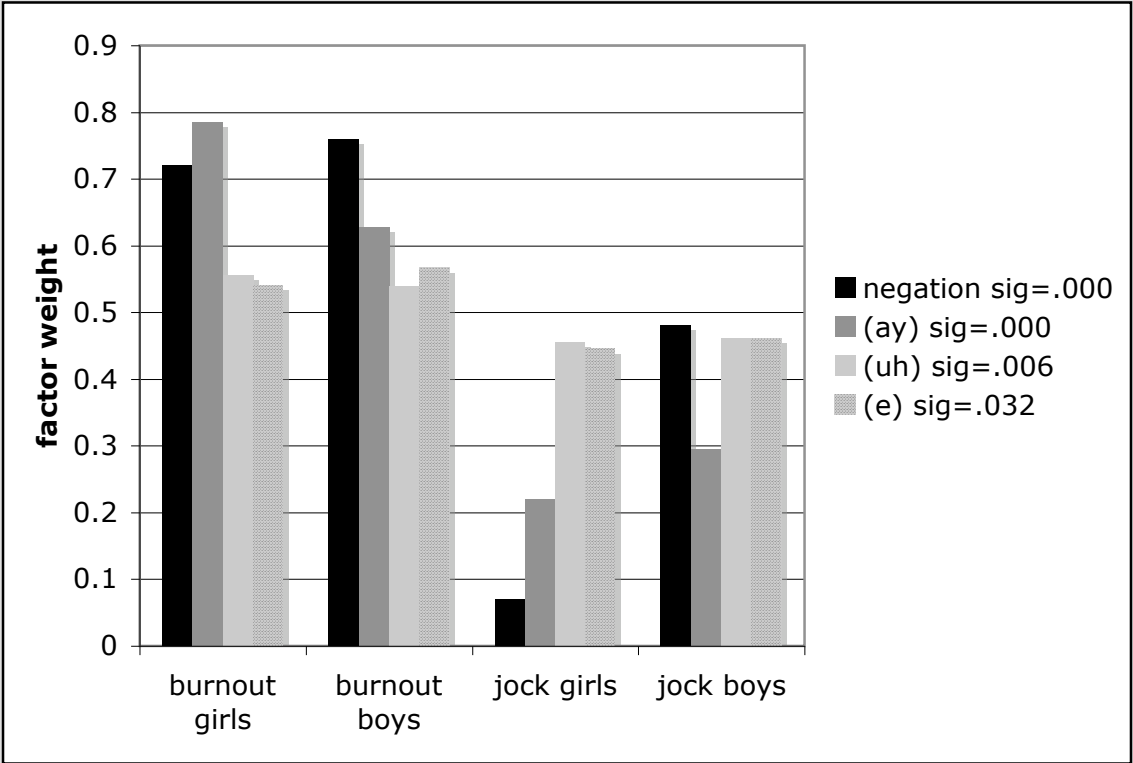




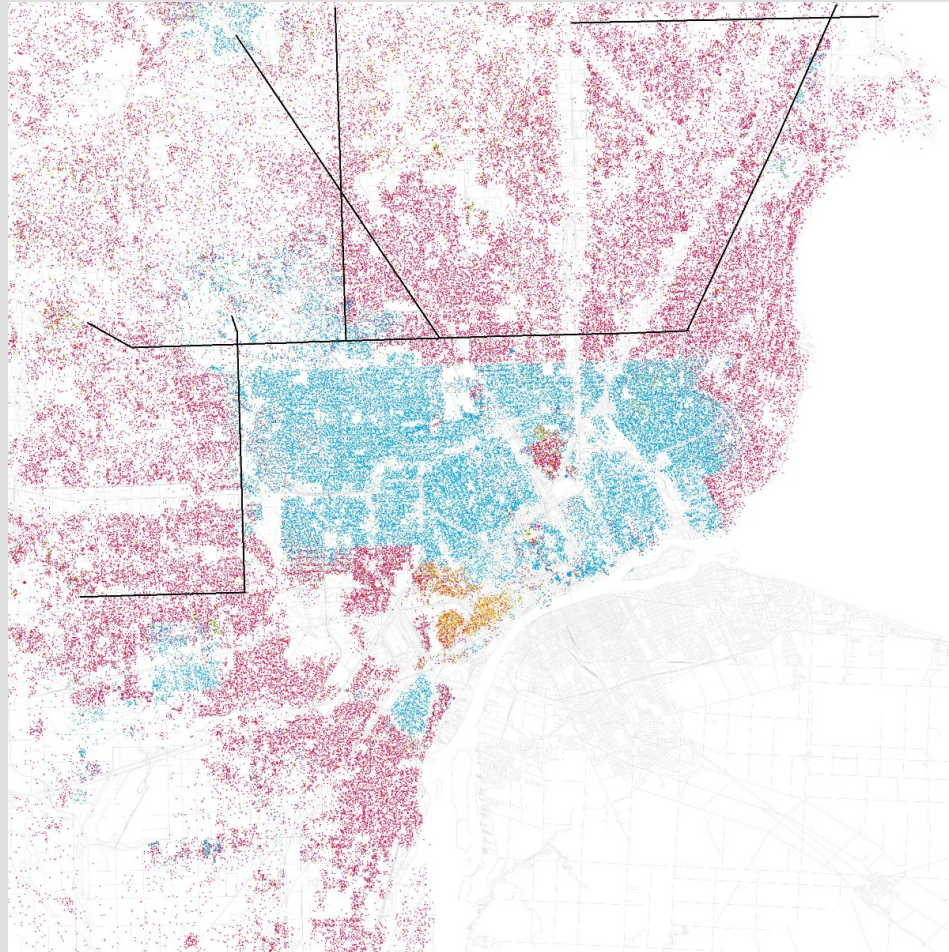
ECKERT, PENELOPE. 2000. Linguistic variation as social practice. Oxford: Blackwell.

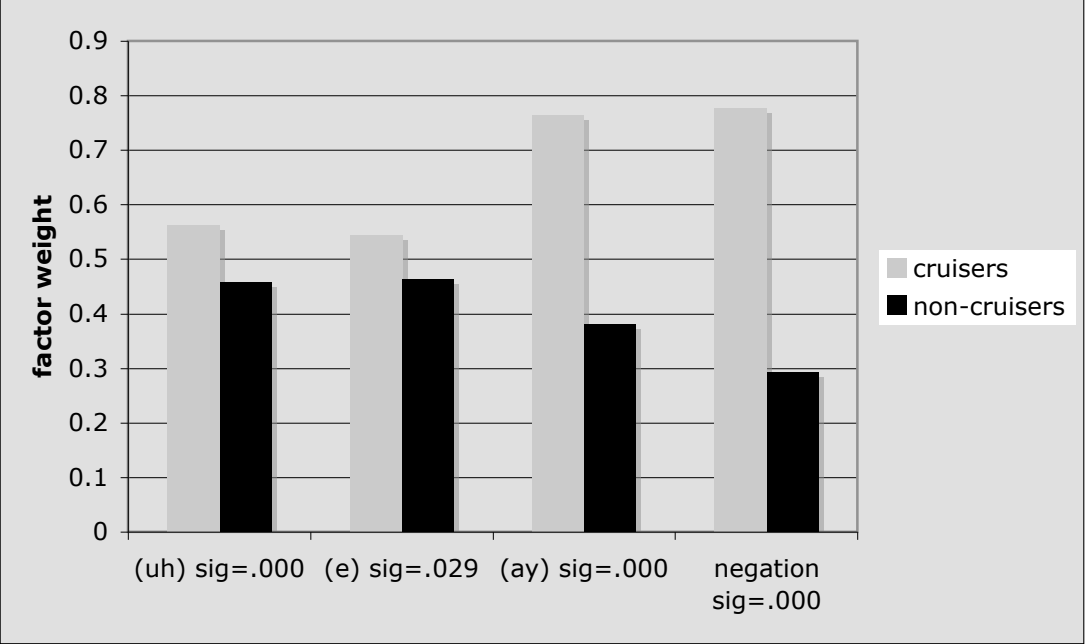


/ay/  
raising

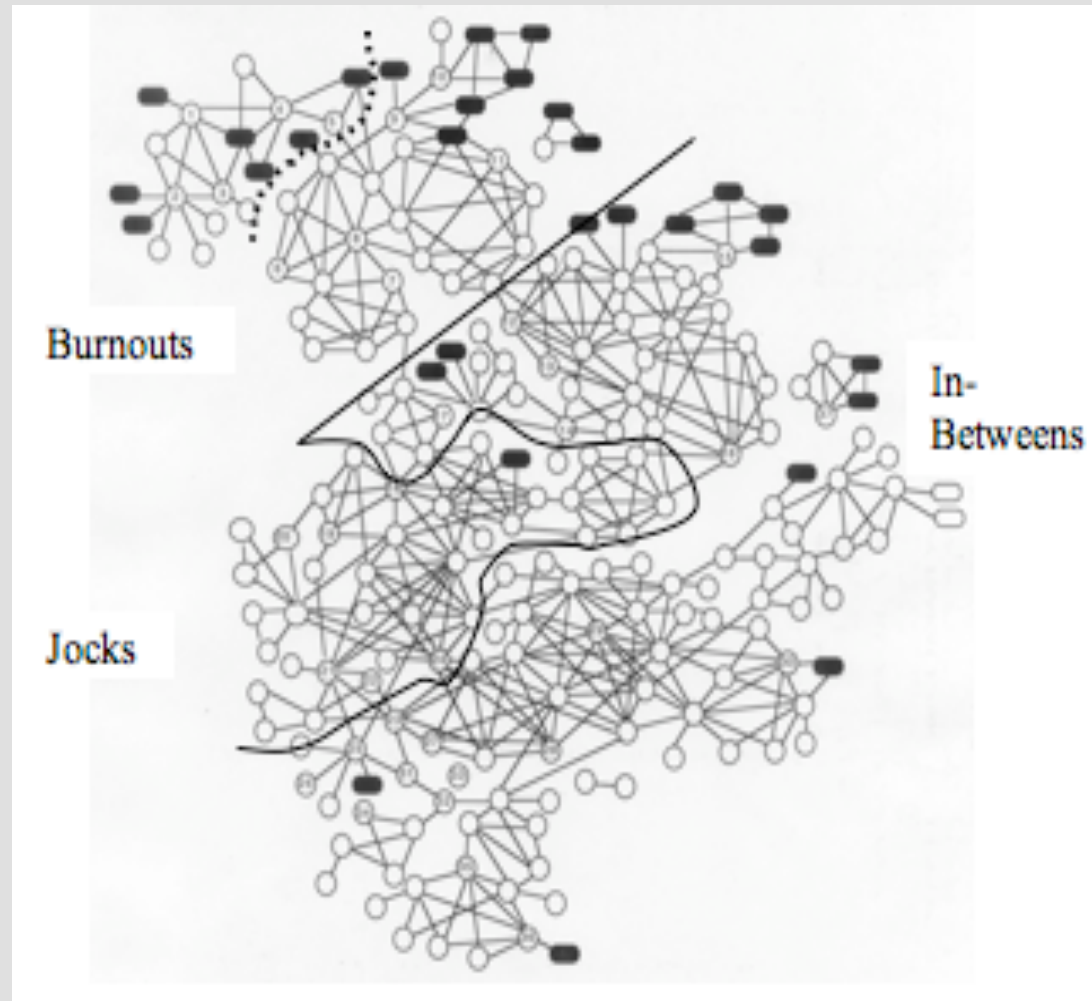


# Cruising and the Detroit Racial Divide

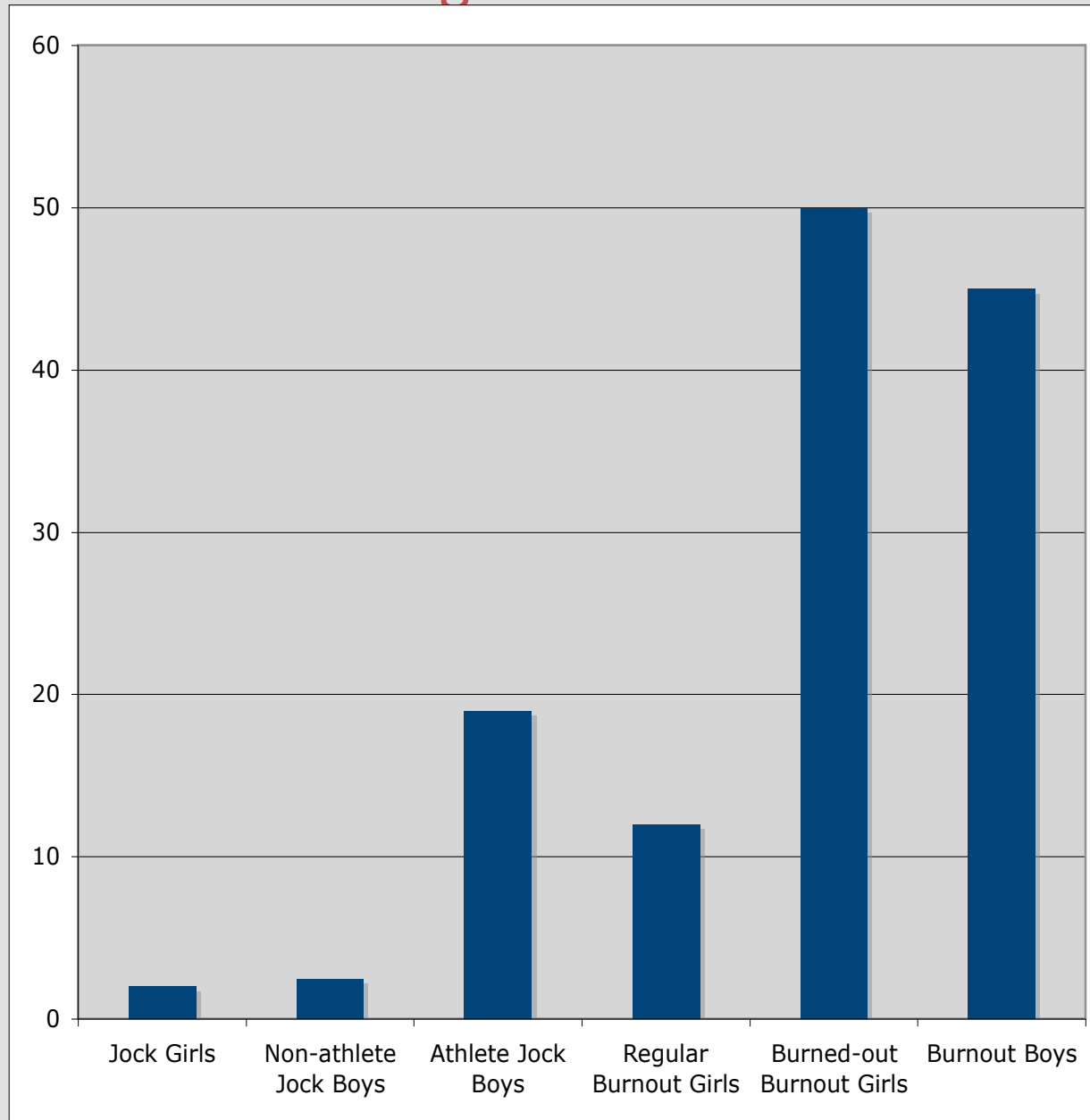


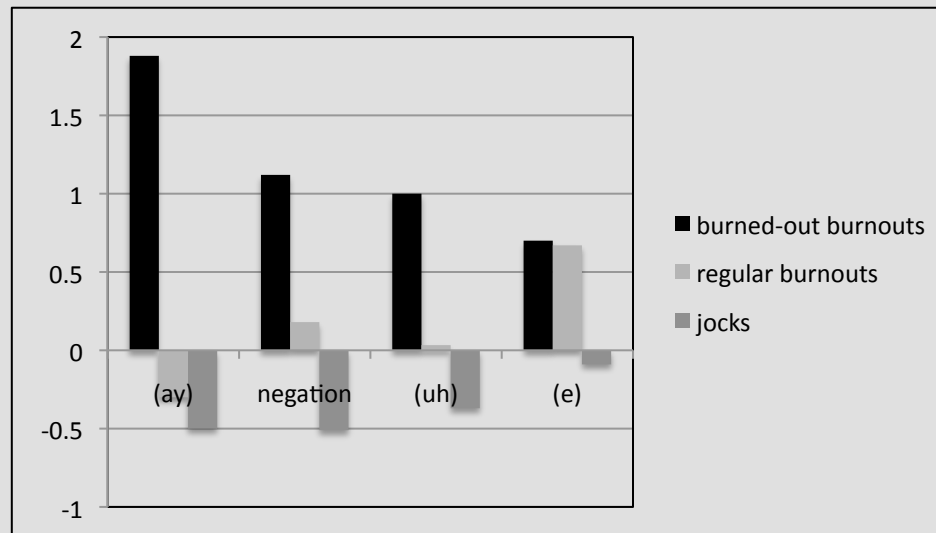


# Girls' Network



## % Negative Concord





# AAVE (African American Vernacular English)

Where did it come from?

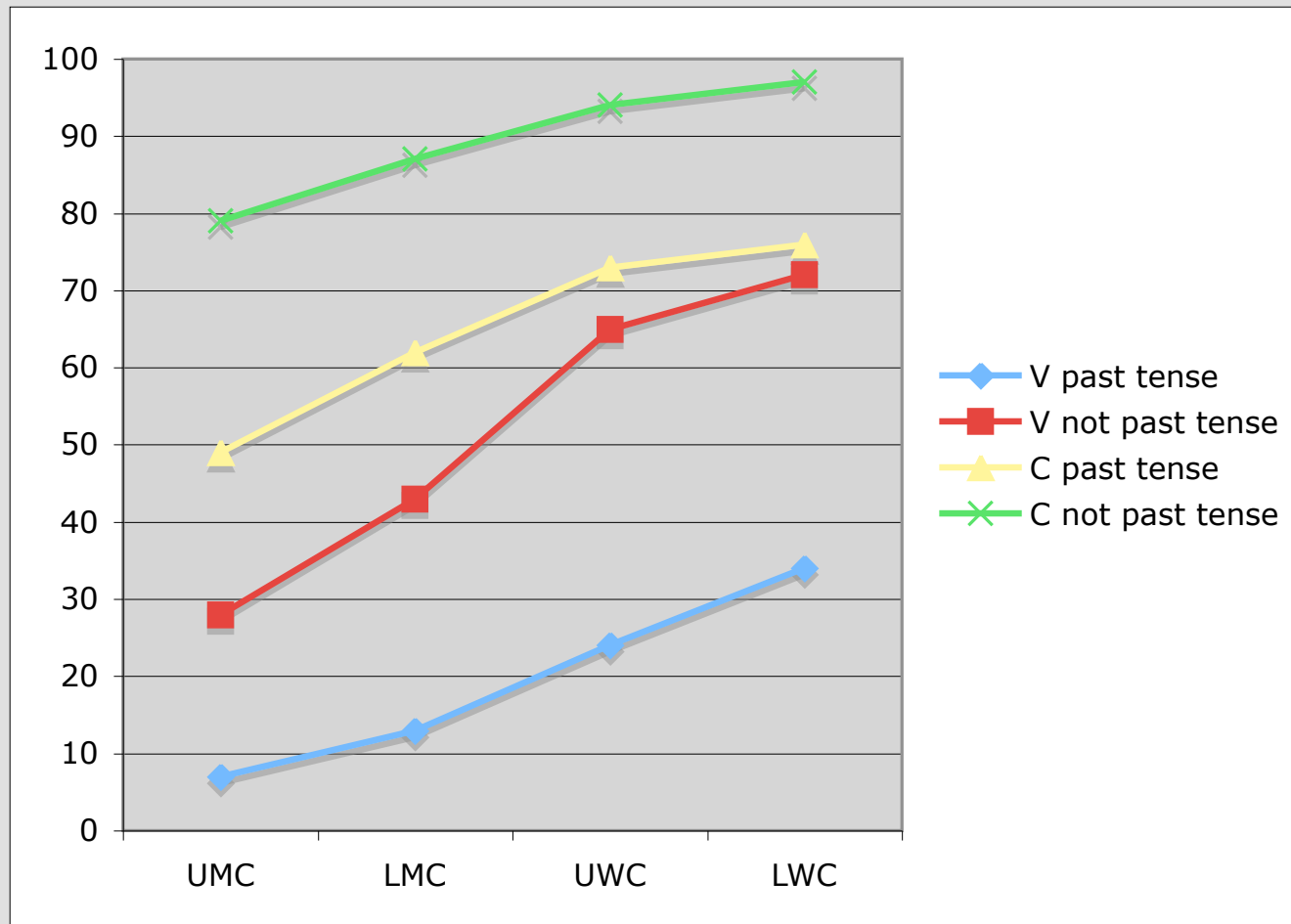
Two Hypotheses:

“Creolist” (e.g. John Rickford)

“Dialectologist” (e.g. Shana Poplack)

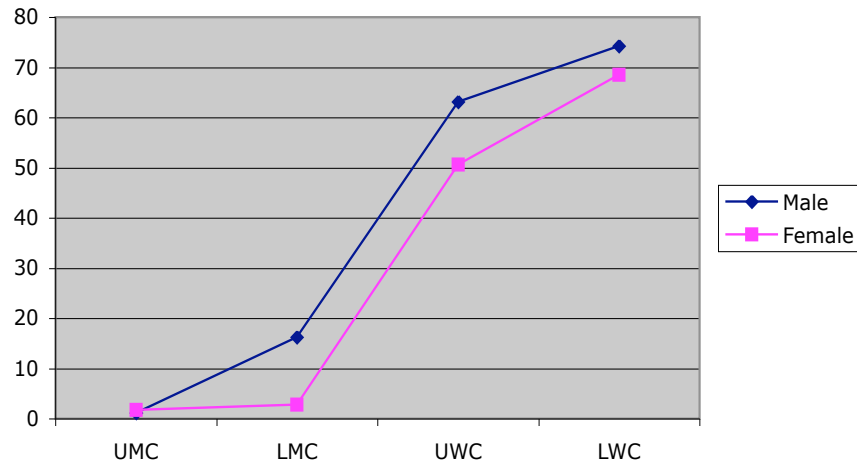


## Features of AAVE: t/d deletion

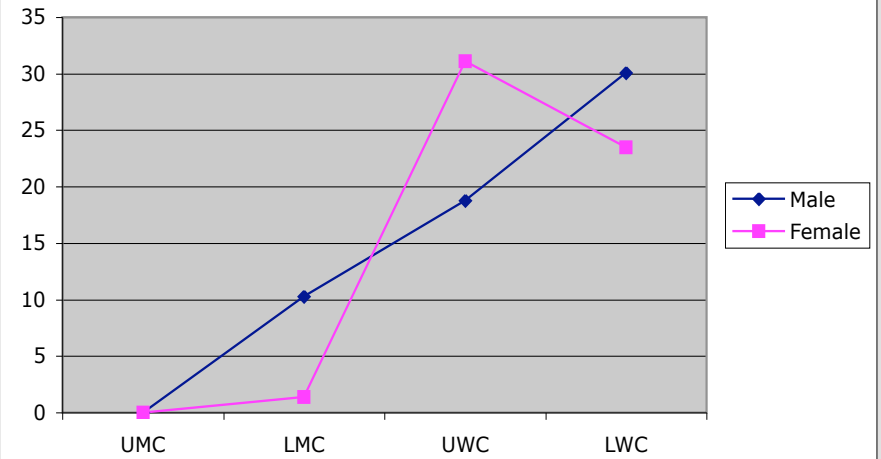


# Features of AAVE: s absence

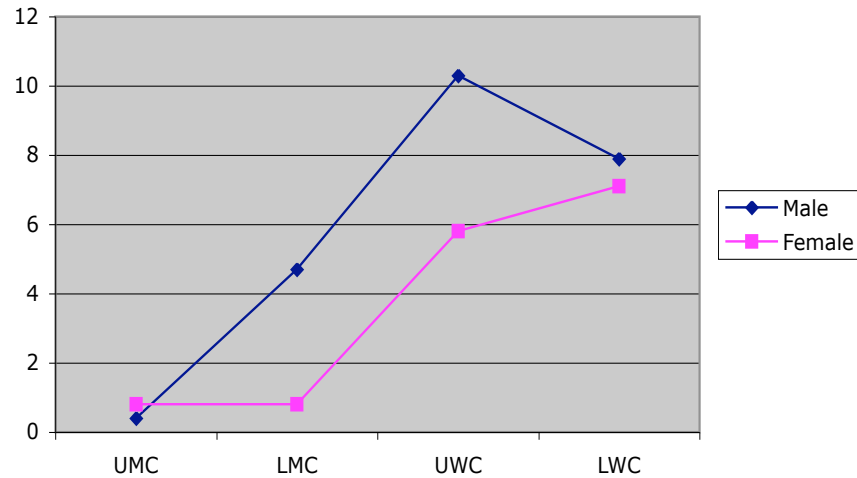
### % 3 sg -s absence



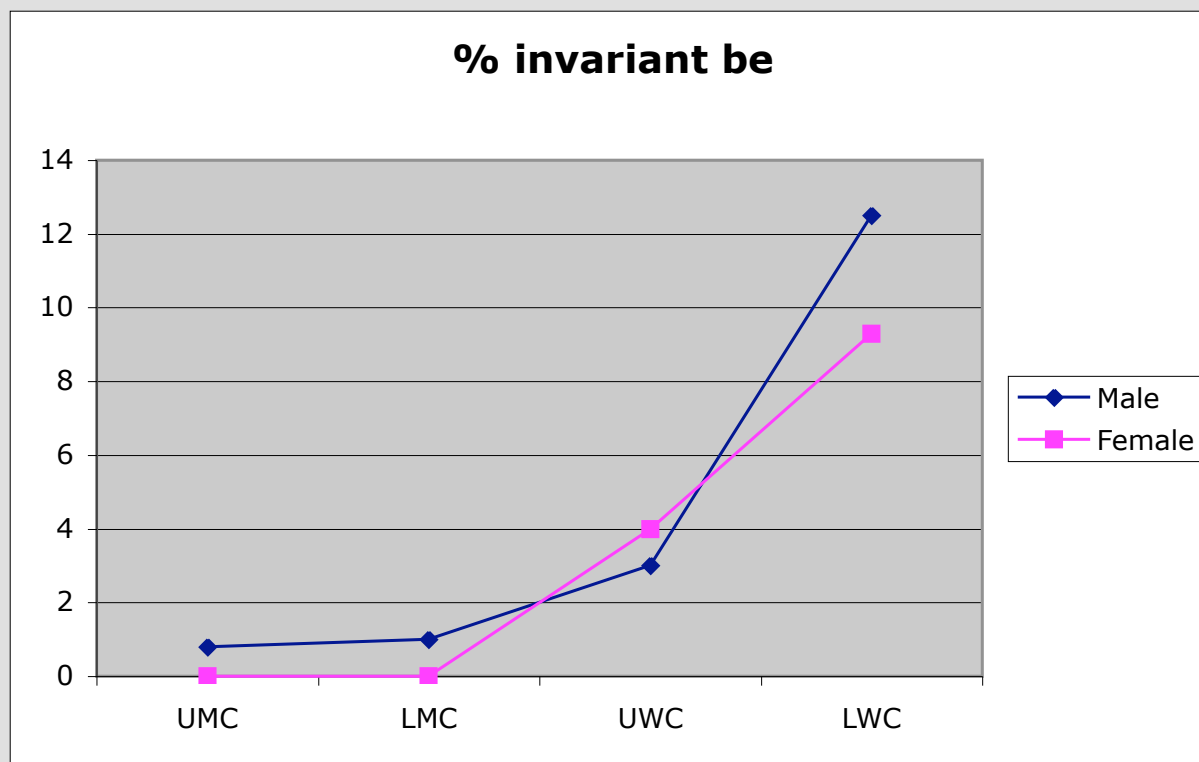
### % poss. s absence



### % plural s absence

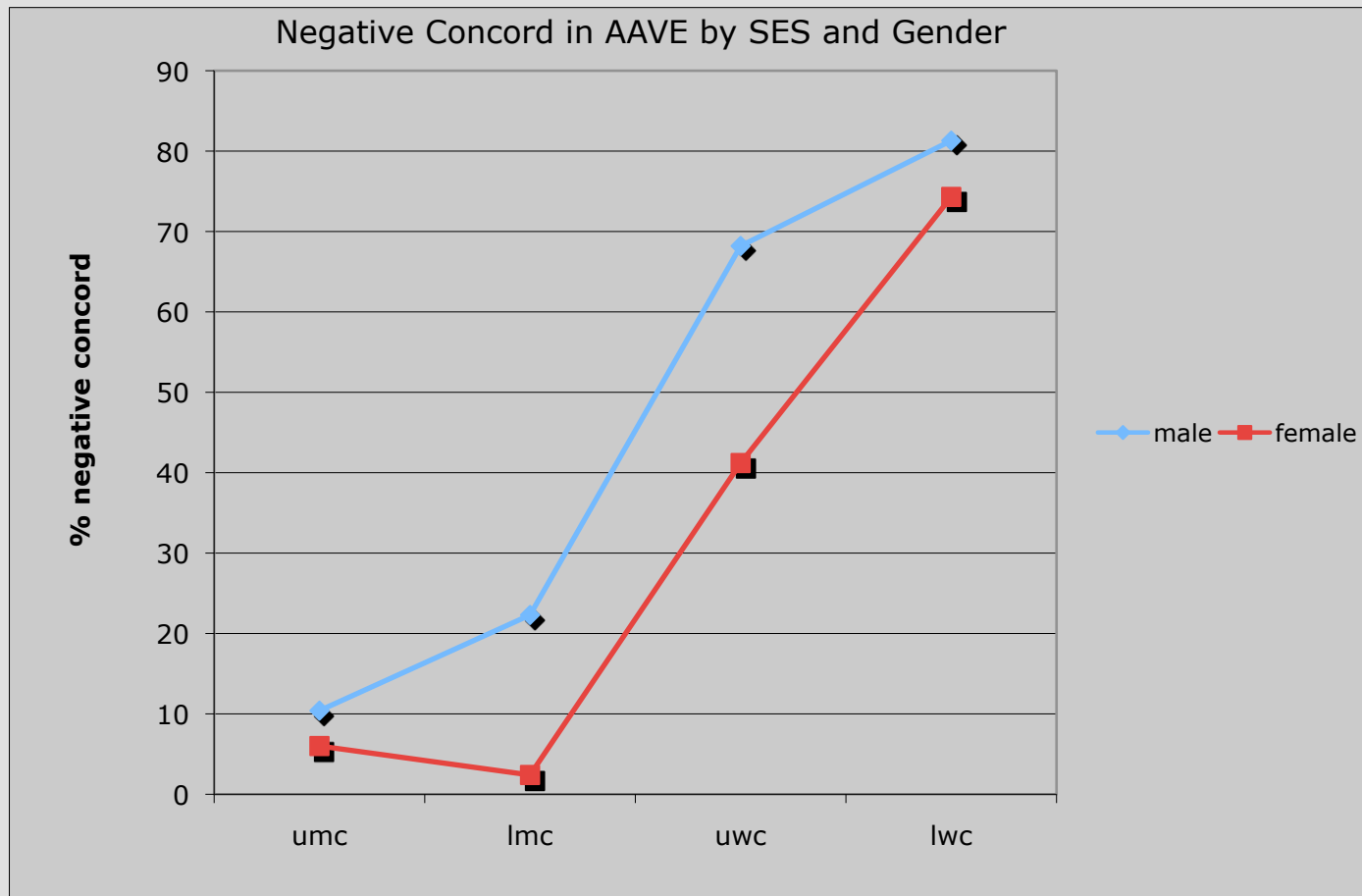


## Features of AAVE: invariant BE

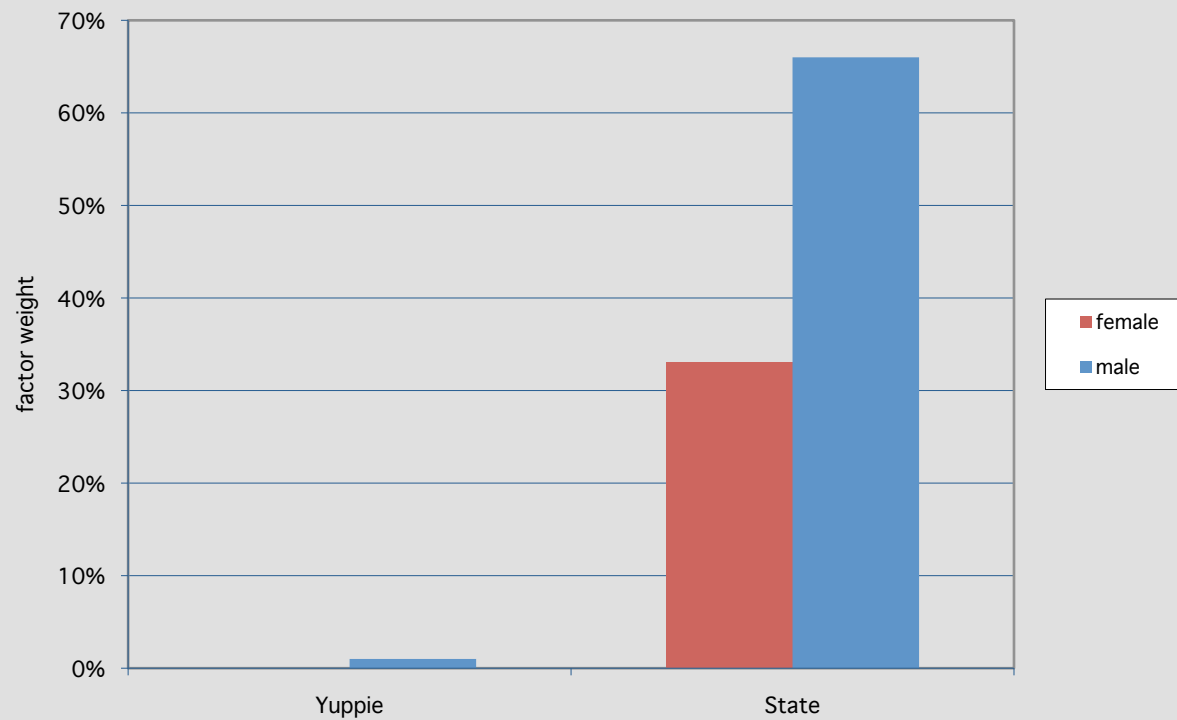


WOLFRAM, WALT. 1969. A sociolinguistic description of Detroit Negro speech. Washington DC: Center for Applied Linguistics.

It ain't no cat can't get in no coop.

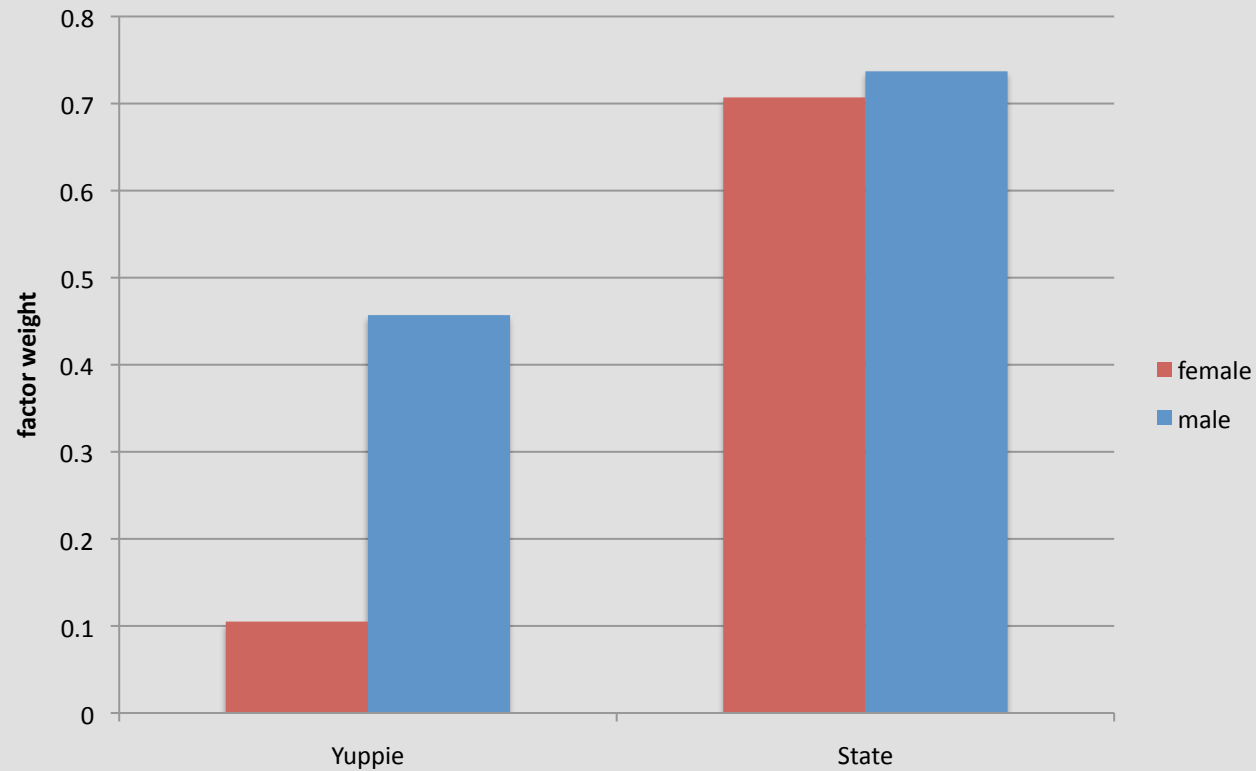


Zhang, Qing. (2005) A Chinese yuppie in Beijing: Phonological variation and the construction of a new professional identity. *Language in society*. 34(3). 431-66.



Interdental /z/

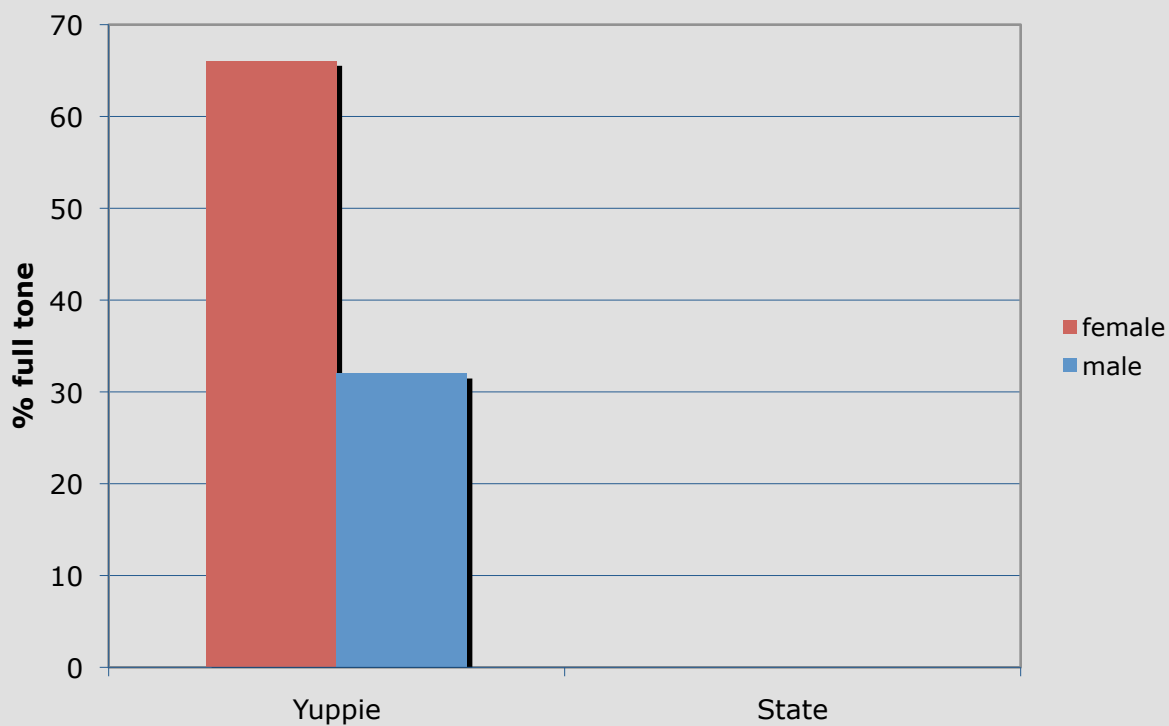
Zhang, Qing. (2008) Rhotacization and the 'Beijing Smooth Operator': The social meaning of a linguistic variable. *Journal of sociolinguistics*. 12(2). 201-22.



Rhotacization of finals

Zhang, Qing. (2005) A Chinese yuppie in Beijing: Phonological variation and the construction of a new professional identity. *Language in society*. 34(3). 431-66.

% full tone



# Beijing Manager Styles

