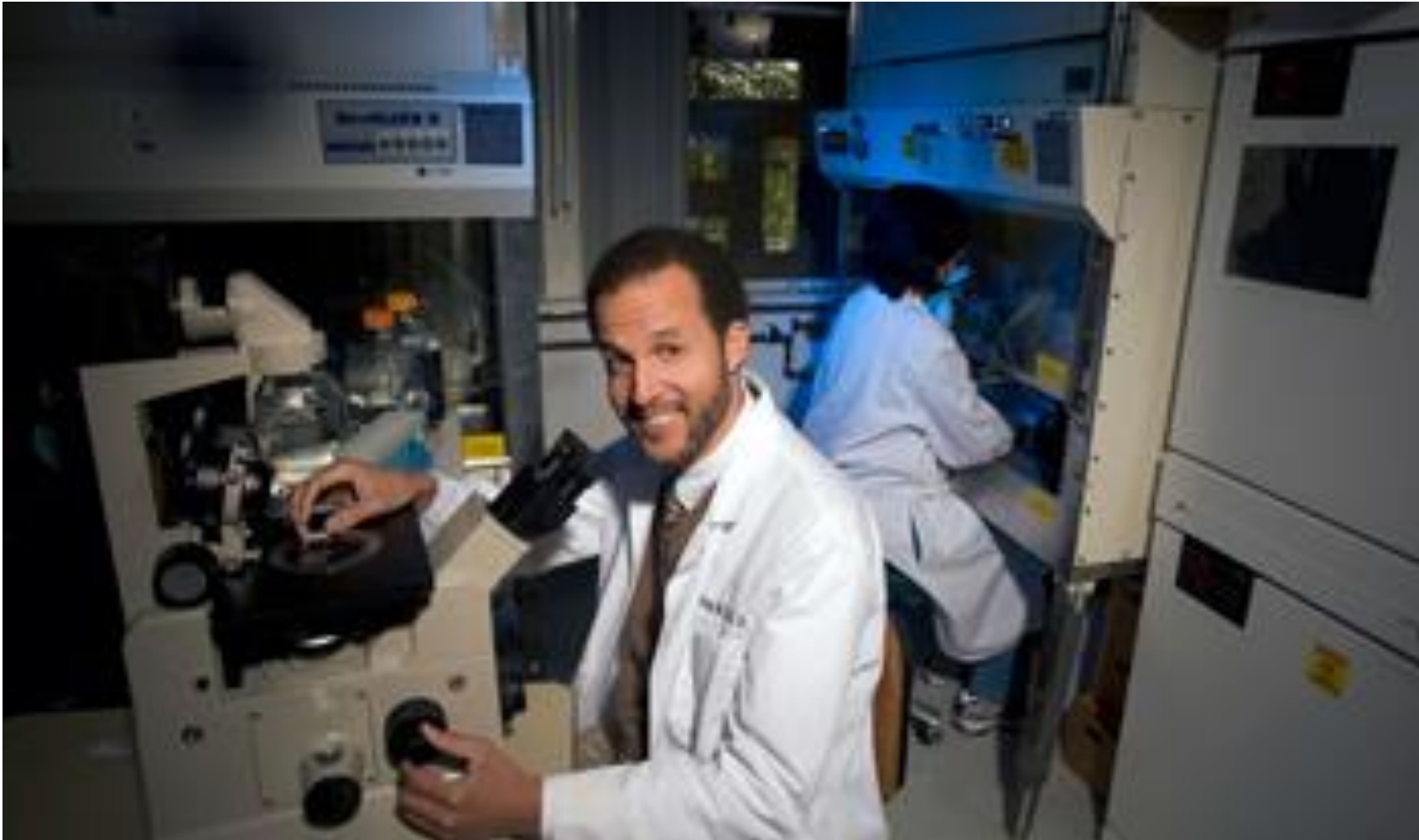


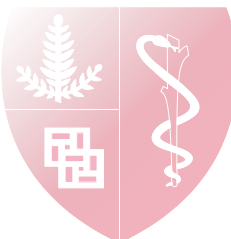
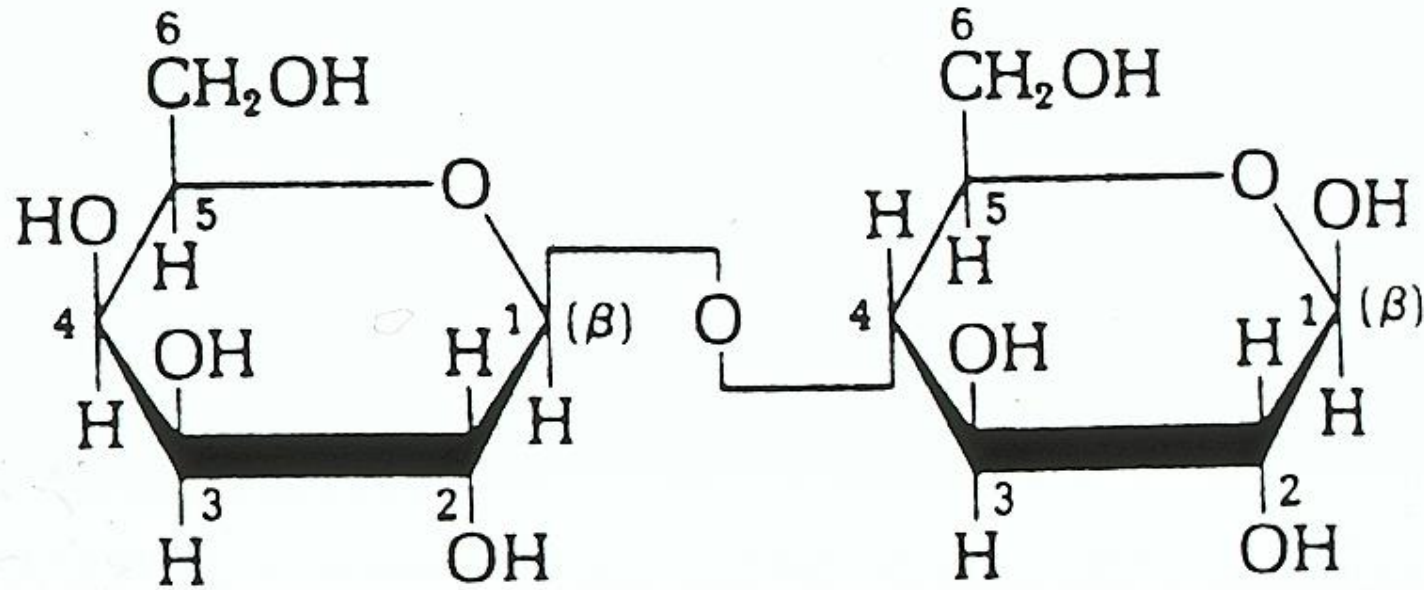
**Eric Sibley, MD, PhD, Professor of Pediatrics,
came to Stanford in 1993 as a postdoctoral fellow**

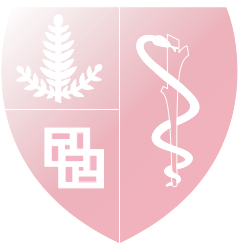
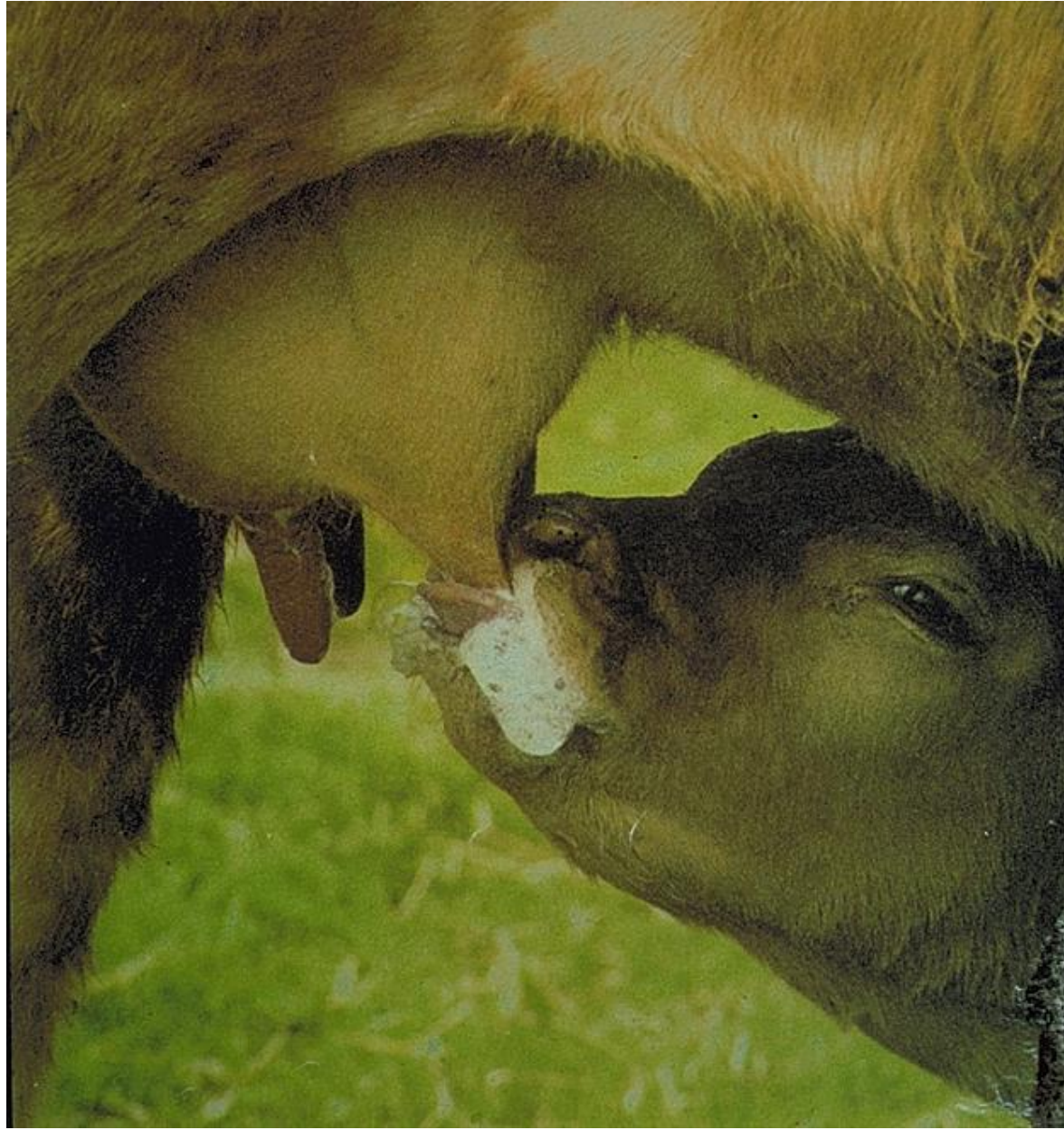


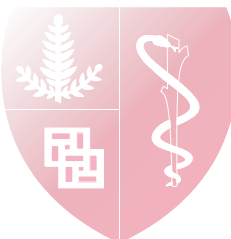
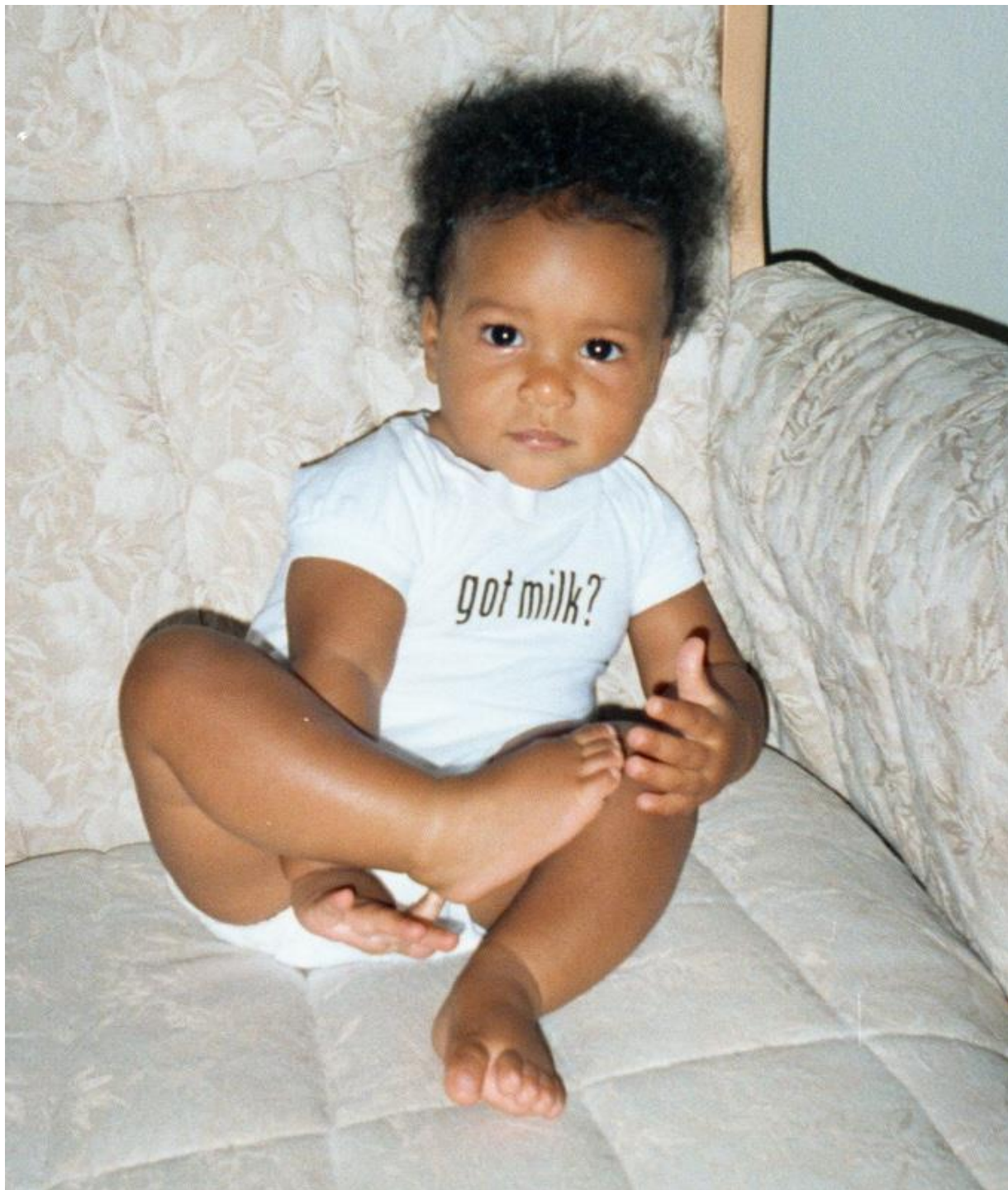


Lactose (β form)

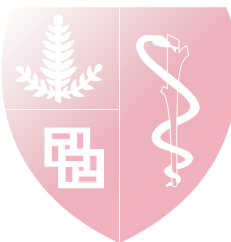
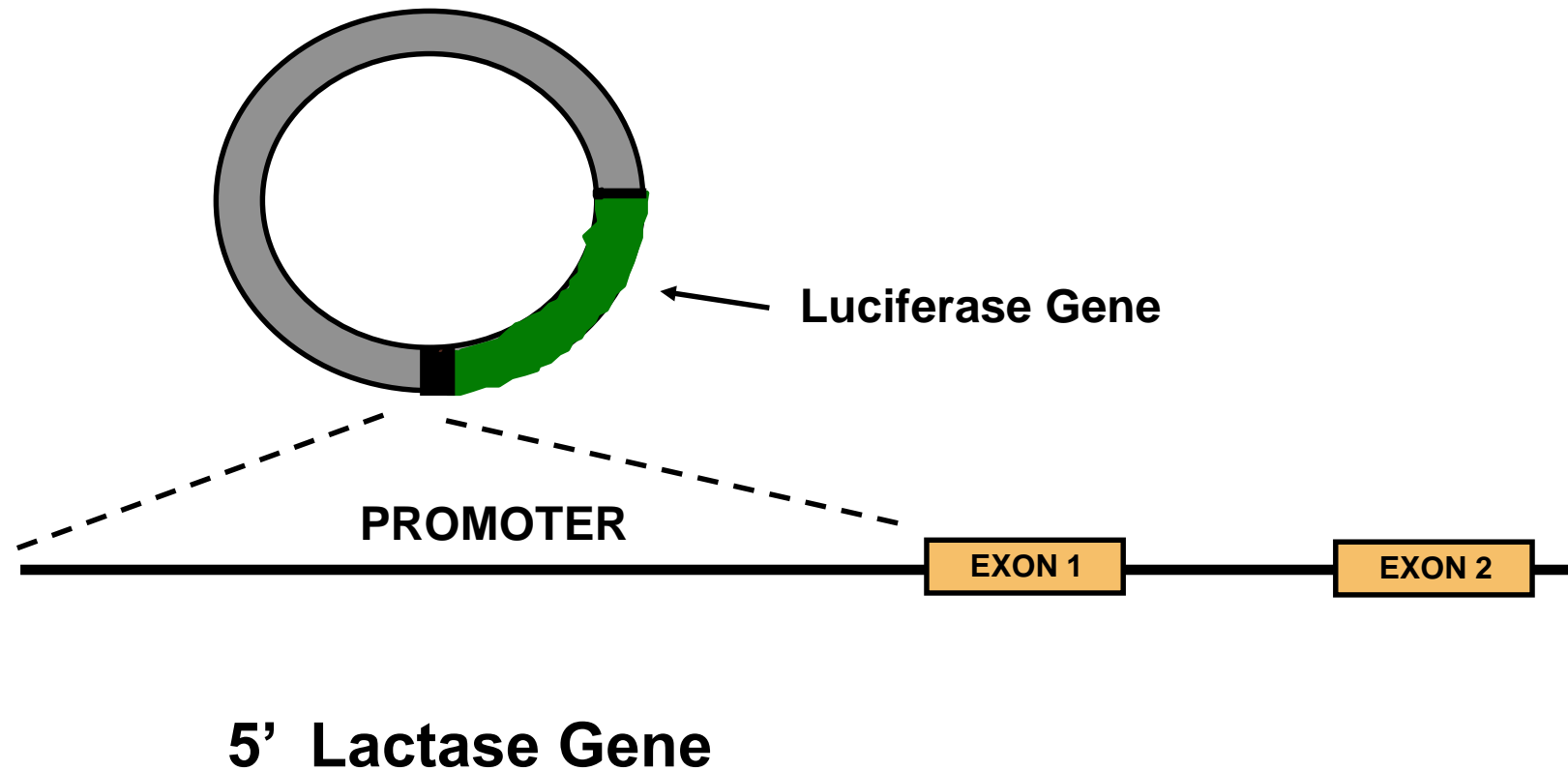
(O- β -D-galactopyranosyl-(1 \rightarrow 4)- β -D-glucopyranose)



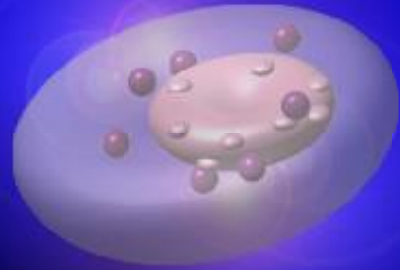




Lactase Promoter - Luciferase Reporter



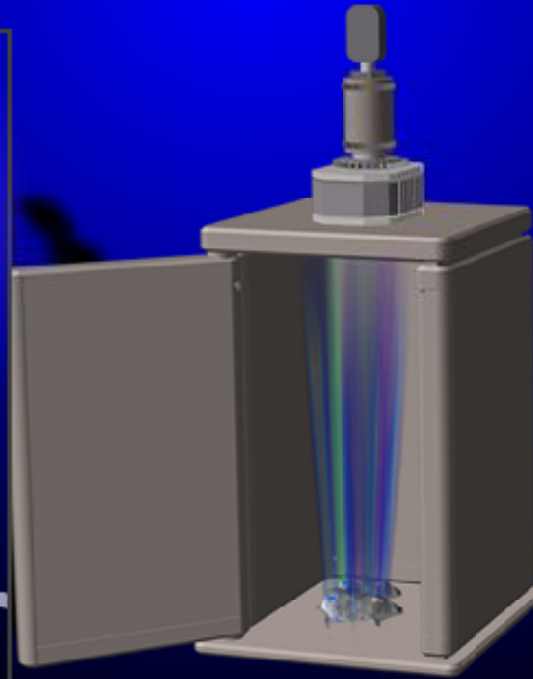
Basic Method



Tag Cell



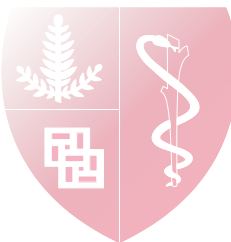
Tag Gene



Image



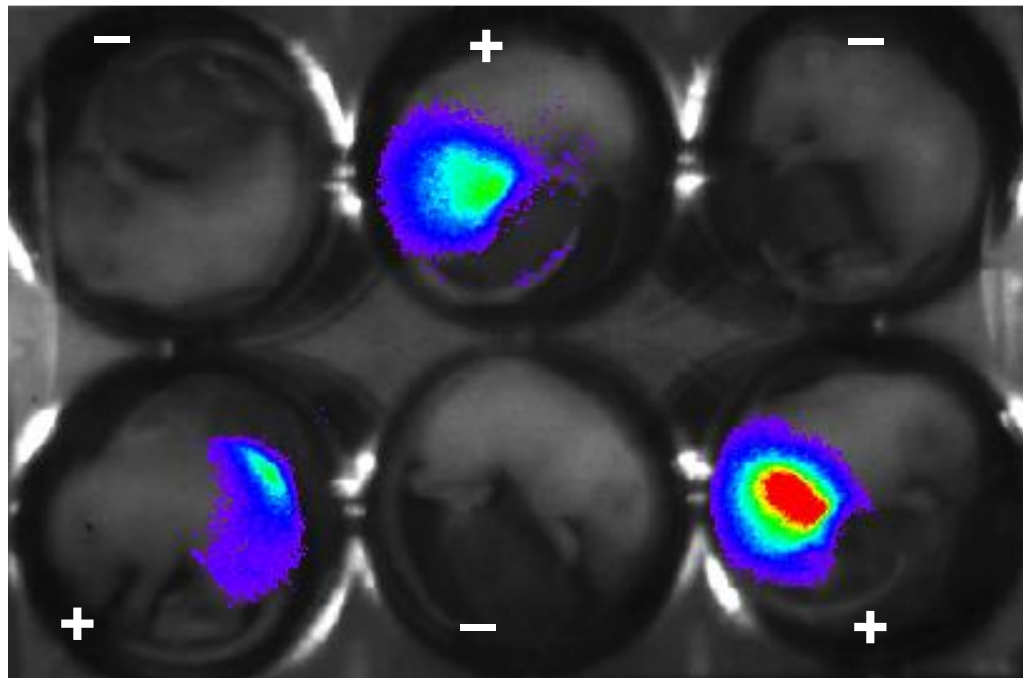
Digitize
Quantify
Archive



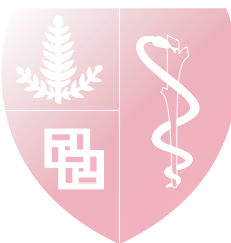
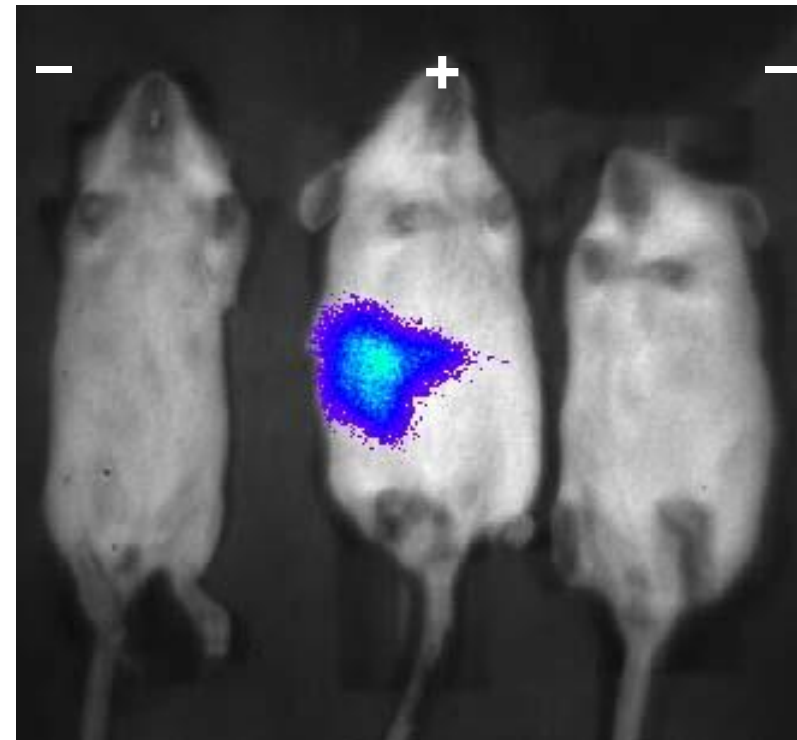
In Vivo Detection of Luciferase Activity

gLac2K- F1 Generation: PCR + or -

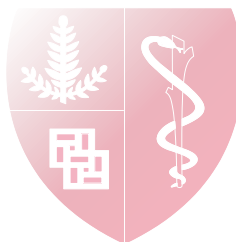
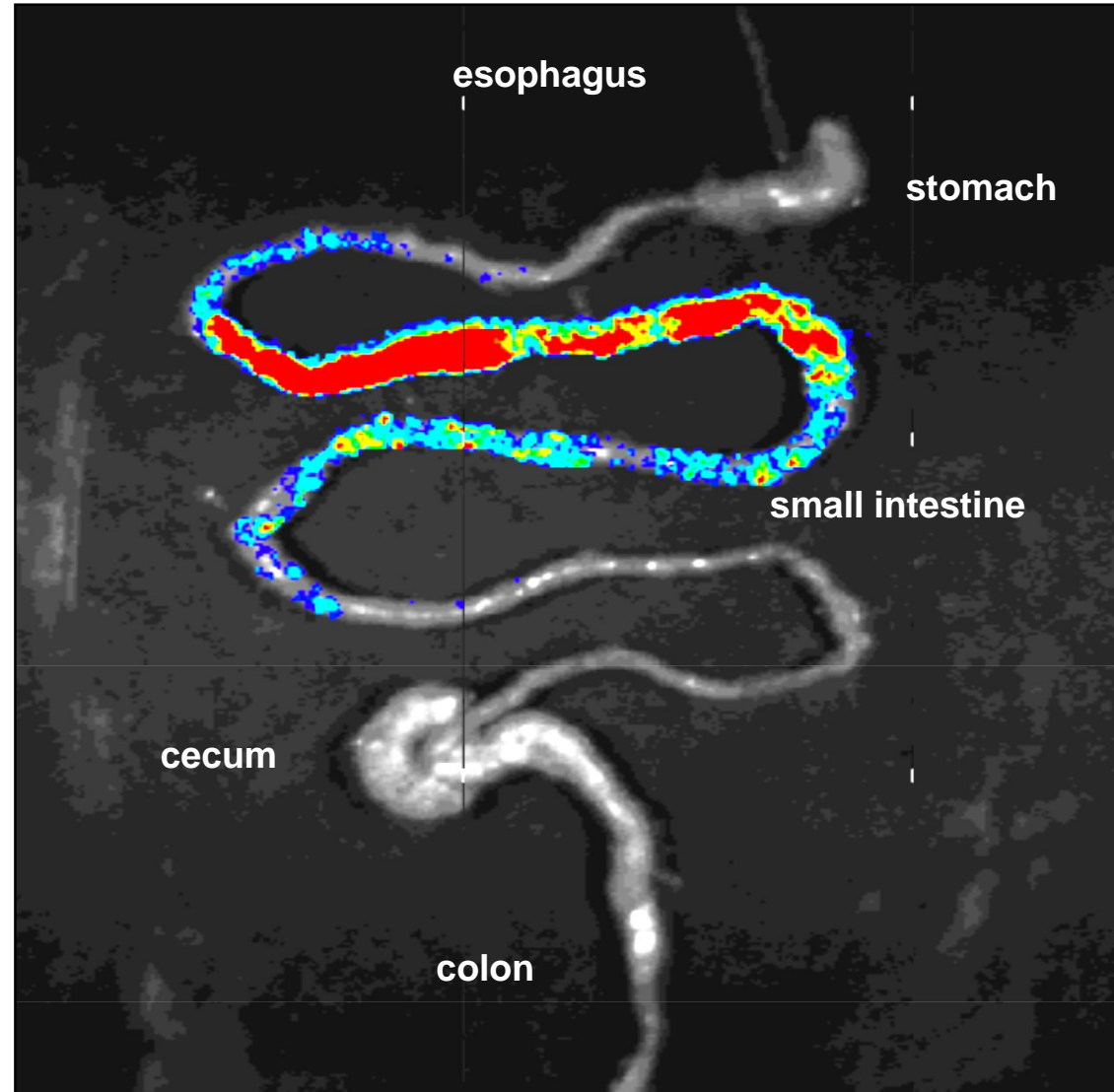
Age: 7 days (six pups)



Age: 4 weeks

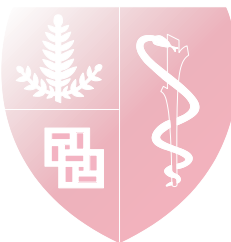


2Kb Lactase Promoter Directs Spatial Restriction of Expression

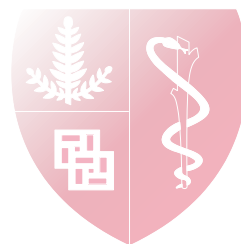


3' MCM6 Gene

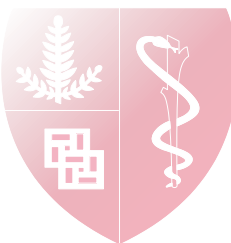
5' Lactase Gene











Stanford | Institutional Equity & Access



[Home](#) [Our Mission](#) [People](#) [Reports](#)



Sheila Sanchez

Assistant Director, ADA Program Director, Diversity and Access Office

Phone: (650) 725-0326

Email: sheilas@stanford.edu

External Profile Link:

[View full profile on Stanford Profiles](#)

