

March 13, 2018
End-of-term Team Project Presentations



ENGR110/210

Perspectives in Assistive Technology



David L. Jaffe, MS
Instructor



End-of-term Student Team Project Presentations

Please fill out this form legibly with a pen



Don't
evaluate your
own team

Final Student Team Project Presentations
ENGR110/210: Perspectives in Assistive Technology

Please fill out with a pen. **Tuesday, March 13, 2018** Please write legibly.

I am: a student, a faculty member, a community member, other: _____

Thank you for attending this year's end-of-term student team project presentations for ENGR110/210. Student teams have been addressing problems experienced by individuals with disabilities or older adults and have been working to research, brainstorm, design, fabricate, and test a prototype device or software to meet an identified problem. The teaching team would appreciate your assistance in judging the quality of the students' project and presentation efforts. Please read the criteria below and submit your scores, suggestions, and comments. Use a pen and print legibly as your comments will be disseminated to the project teams.

- The student teams' presentations should include the following elements:
 0. Introduction to project and team members
 1. Background, problem statement, and magnitude of problem
 2. Interviews with project suggestors and users who would benefit from a solution
 3. Identification and determination of need
 4. Research on existing solutions and discussion of their limitations
 5. Brainstorm activities, description and visualization of design concepts considered and prototypes built
 6. Description of top designs: technical feasibility, engineering difficulty, estimated cost, user acceptance, functionality, performance, safety considerations, tradeoffs, etc.
 7. Current project activities and status, prototypes built, and challenges encountered
 8. Plans for the future
- Judge the overall quality of the presentation, design process, prototyped concepts in the following areas:

Delivery: (How the team presented) - professionalism, enthusiasm, conviction, confidence, energy, volume

Process: (How the team addressed the problem) - problem information, background research, design concepts transformed & prototyped, testing & evaluation

Presentation: (What the team presented) - clarity, organization, and completeness of the information presented

Design: (What the team produced) - creativity, originality, functionality of the design concept(s) and the likelihood it will meet the users' needs

Overall: (Overall score) - combined impression of presentation and project
- Please use these metrics: = Excellent (Top 10%) = Very Good (Top 25%) = Good (Middle) = Fair (Bottom 25%) = Poor (Bottom 10%)
- Team Presentation order:
 1. **Danny's Dudes** - Creative Expression for Danny
 2. **Team EmPower** - At Home Monitor
 3. **Wheelchair Workers** - Projects for Abby's Wheelchair
 4. **Tony's Terrific Team** - Wheelchair Camber Project
 5. **The Trolls** - Magical Bridge Playground 1
 6. **Team L.L. Bean, LLC** - Better Leg Brace
 7. **Team Harnessing Power** - Hybrid Body-Powered Harness
 8. **The Three Cookies** - Magical Bridge Playground 2
 9. **Uno Dos Trays** - Faramanda's Wheelchair Work Tray
- Please provide your comments and suggestions about the course, this end-of-term presentation, and the overall evaluation process. Thank you for your participation!



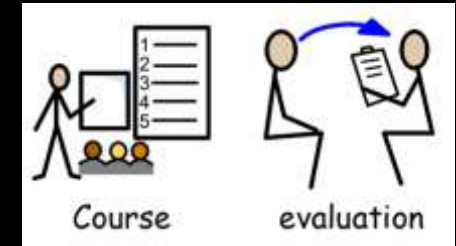
Use a pen that doesn't
bleed through the
paper & print legibly

Course Evaluations



1. Dave's in-class evaluation on Thursday
2. VPTL's evaluation - now available on Axess

VPTL encourages you to complete the course and instructor evaluations and values your opinions



Final Project Report

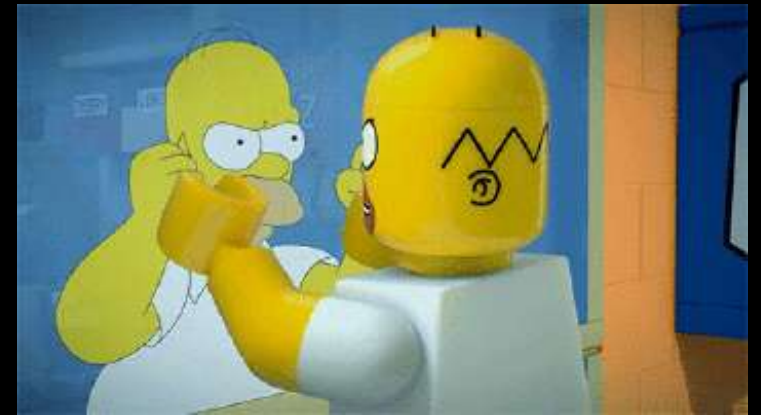
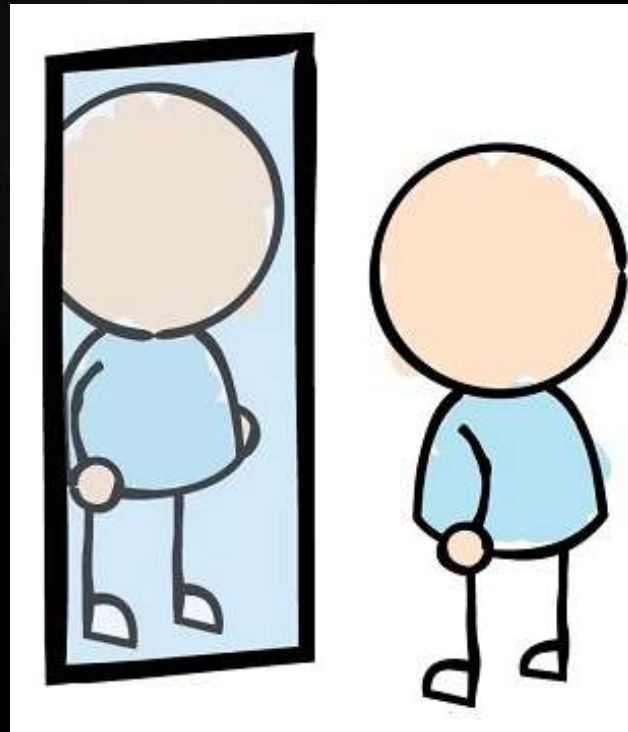
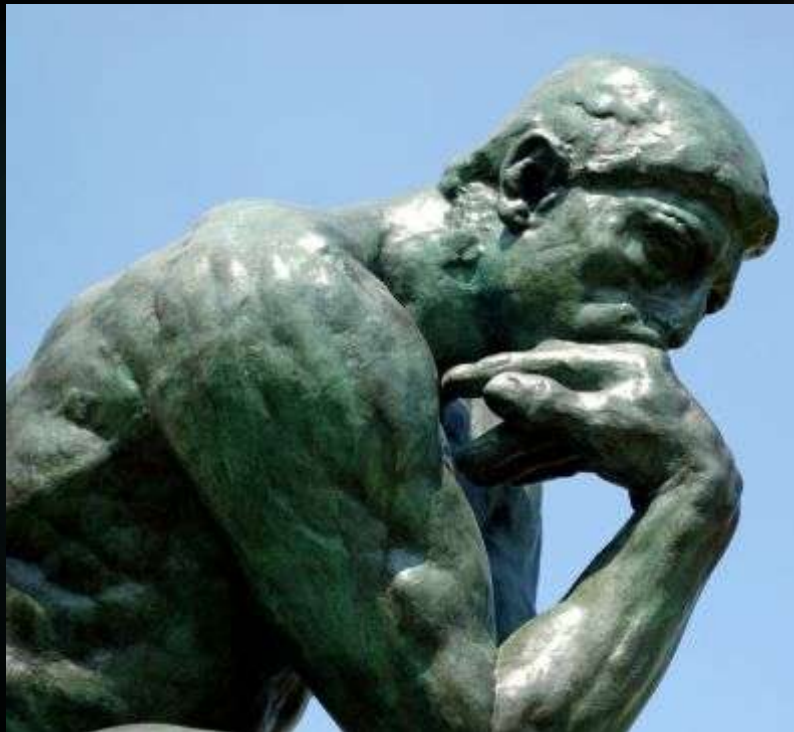


- ▶ Cover your entire quarter's work
- ▶ Expand on material from mid-term report
- ▶ Consider mid-term report mark-ups
- ▶ Due week of March 19th



Individual Reflection

- ▶ How you felt about your course, project, team experience
- ▶ Due week of March 19th



Due Date for Report & Reflection

- ▶ Due week of March 19th
- ▶ Email me with date you expect to submit these documents: Monday, Tuesday, Wednesday, or Thursday



Project Reimbursements

- ▶ Save all receipts
- ▶ One team member will be reimbursed for each team
- ▶ Car rental and mileage are not reimbursable
- ▶ PRL Shop Passes are not reimbursable
- ▶ Detailed instructions will be emailed



Project Demonstrations - Thursday



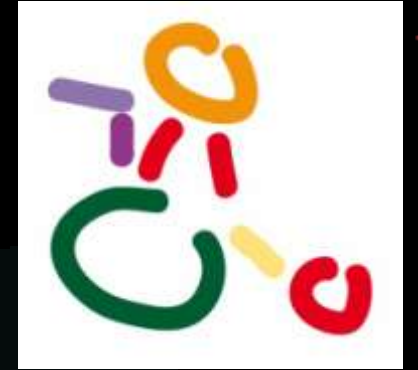
- ▶ Bring all prototypes to class
- ▶ Meet in classroom to fill out a course evaluation form
- ▶ Project demonstrations outside classroom (if not raining)
- ▶ No posters or handouts - informal “trade show” presentations
- ▶ Demonstrate prototype’s functionality (make sure I check it out)
- ▶ Check out other teams’ projects
- ▶ Burritos & sodas
- ▶ Community members welcome
- ▶ Invite project suggestors, users, friends who contributed to your project’s success
- ▶ Bring laptop to show additional videos and images of your process (AC available in classroom)



Project Considerations



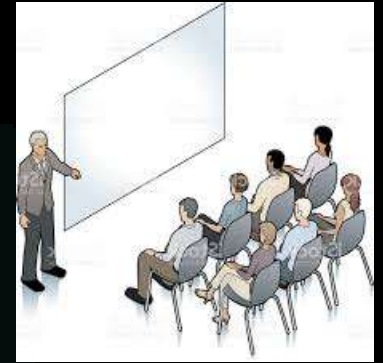
- ▶ Your prototype should be functional, but not necessarily ready for market
- ▶ Contingency plans if things don't work out
- ▶ Add a team or Stanford logo
- ▶ Never apologize for what you did or what you were not able to achieve
- ▶ Mention future plans
- ▶ Remember "Everything is a prototype"



Today - End-of-term Project Presentations Information for Community Members



- ▶ Thank you for attending this year's final student team project presentations for ENGR110/210.
- ▶ Student teams have been addressing challenges experienced by individuals with disabilities or older adults
- ▶ They have been working to understand, research, brainstorm, design, fabricate, and test prototype devices or software to meet the identified problem.
- ▶ The teaching team would appreciate your assistance in judging the quality of the students' project efforts.
- ▶ **Please note that this was a seven-week team effort and the prototype is not intended to represent a commercial offering.**
- ▶ Read the criteria on the Scoring Sheet and submit your scores, suggestions, and comments.



Presentation Order



End-of-term Student Team Project Presentations

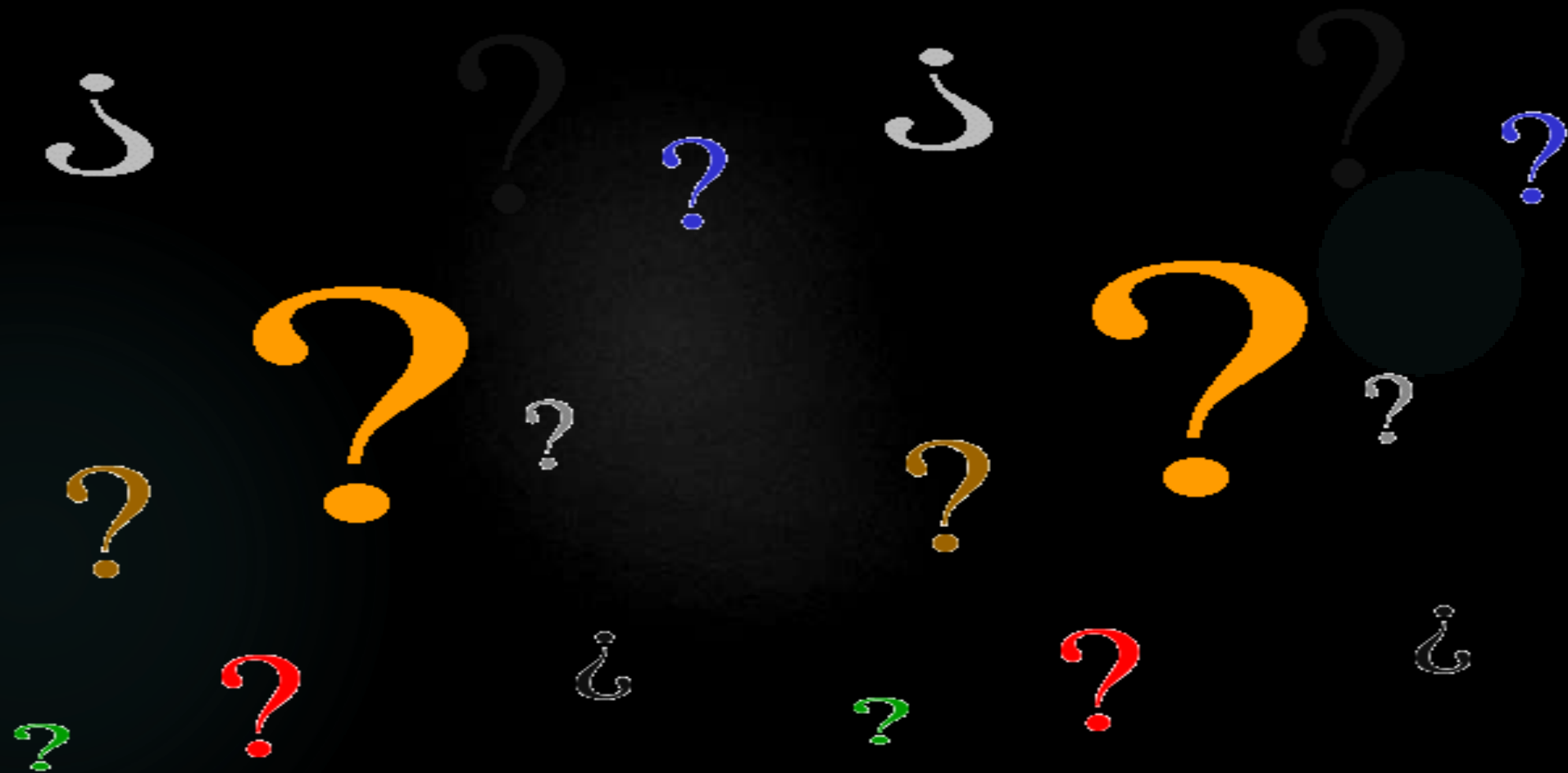
1. **Danny's Dudes** - Creative Expression for Danny
2. **Team EmpowerU** - At Home Monitor
3. **Wheelchair Workers** - Projects for Abby's Wheelchair
4. **Tony's Terrific Team** - Wheelchair Camber Project
5. **The Trolls** - Magical Bridge Playground Project 1
6. **Team L.L. Bean, LLC** - Better Leg Brace
7. **Team Harnessing Power** - Hybrid Body-Powered Harness
8. **The Three Cookies** - Magical Bridge Playground Project 2
9. **Uno Dos Trays** - Fernanda's Wheelchair Work Tray



Wireless Slide Presenter

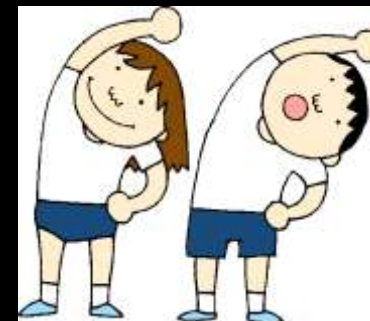
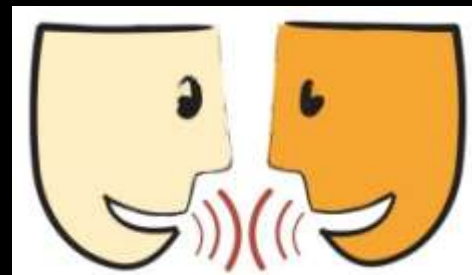


Questions?



Break Activities

- ▶ Stand up and stretch
- ▶ Sign attendance sheet
- ▶ Grab a cookie
- ▶ Take a bio-break
- ▶ Text message, web-surf, email
- ▶ Talk with classmates
- ▶ Reflect on what was presented in class



Adjourn



class dismissed



Laptops Galore



Time for Questions?



End the class

