

February 20, 2014

# ENGR110/210

## Perspectives in Assistive Technology



David L. Jaffe, MS



Margaret Mongare



Professor Drew Nelson



Proadpran P. Punyabukkana, PhD

# Questions?





# Upcoming Lectures

- Tue – Feb 25<sup>th</sup> – Motion & Gait Analysis Lab Tour – **Students & Drivers only**
- Thu – Feb 27<sup>th</sup> – Designing Beyond the Norm to Meet the Needs of All People
- Tue – Mar 4<sup>th</sup> – Aesthetics Matter in Assistive Technology & Starting an Assistive Technology Company
- Thu – Mar 6<sup>th</sup> - Wheelchair Fabrication in Developing Countries
- Tue – Mar 11<sup>th</sup> – Student Team Project Final Presentations
- Thu – Mar 13<sup>th</sup> – Project Demos, Course Evaluation, and Celebration

# Important Weblinks

- Course website
  - <http://engr110.stanford.edu/>
- Lecture schedule
  - <http://engr110.stanford.edu/schedule.html>
- Anonymous Suggestion Box
  - <http://engr110.stanford.edu/suggestion.html>
- Course syllabus
  - <http://engr110.stanford.edu/syllabus.html>
- Example team project report
  - <http://engr110.stanford.edu/ProApps.pdf>
- Final team project assignment
  - <http://engr110.stanford.edu/assignment2.html>
- Individual project assignment
  - <http://engr110.stanford.edu/assignment.html>

# Grades

1. Mid-term report and presentation together account for 30% of course grade.
2. Presentations are scored, not “graded”.
3. Reports are marked up and rated “good”, “very good”, or “excellent”.
4. Mid-term report and presentation should be considered “practice” for final report and presentation (which each account for 30% of course grade). Consider presentation comments and report markups.
5. Final grade considers reports, presentations, and participation.
6. Missed lectures that are not made up have an impact on an student’s grade.
7. Previous years’ students got “A” or “A-” because they put in a significant effort into their projects, presentations, and reports – and they participated in class discussions.

# Missed Lectures

- The in-class lectures are a vital component of ENGR110/210 Perspectives in Assistive Technology course.
- If you are taking the class for one-unit (either with or without a letter grade), you must attend at least 10 lectures, including the first one.
- With the three-unit option, you are required to attend all the class sessions.
- Any missed mandatory lectures must be made up. Failure to do so will have an impact on the student's grade.

# Missed Lectures

- Missed lectures may be made up by first reviewing the lecture recorded audio, slides, any handouts, any videos, any weblinks, and photos posted on the lecture webpage.
- Then either:
  - Write a summary of the missed lecture of 1 - 2 pages in length that includes an overview of the lecture content as well as your comments, thoughts, and reflections about the material. (What was especially interesting, surprising, how it made you feel, etc.) Email the text or Word document to me within a week of the missed lecture. Please don't use a large font, double-spacing, or wide margins.
  - Arrange to meet with me to discuss the missed lecture. Be prepared to lead the conversation with questions, comments, and thoughts. This should take about 15 minutes.
- After I receive and read your emailed submission or met with you, I will credit you with "attending" the missed class lecture.



# Miscellany



1. RESNA Student Design Competition
2. Project Home Stretch
3. “Meet with Dave” sign-up sheet
4. Driver and passenger signup sheet for field trip:
  - Tue Feb 25<sup>th</sup> - Motion & Gait Analysis (Menlo Park)
5. Weekly project progress – by email and/or meeting
  - Show me your sketches and prototypes
  - Show me your report and presentation drafts
  - Get another project perspective from Margaret or Proadpran



# Tuesday

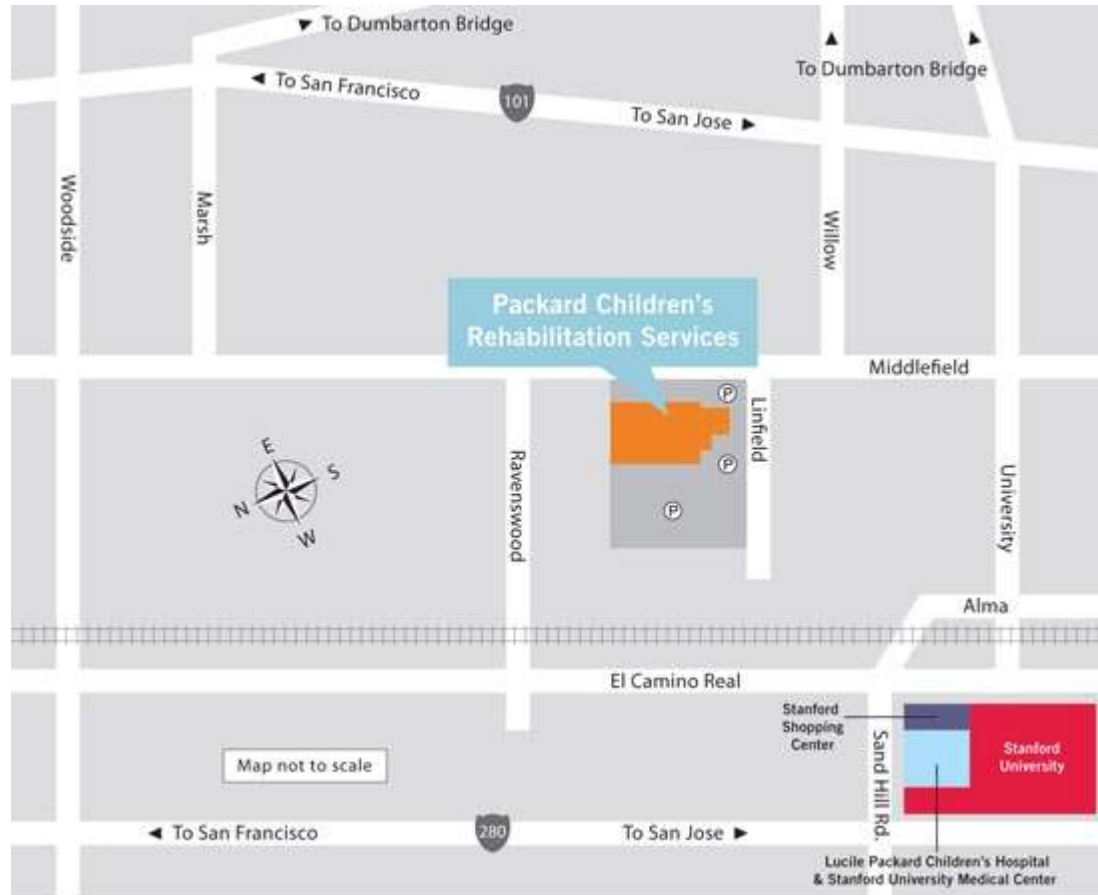


Jessica Rose, PhD & Katelyn Cahill-Rowley

**Tour of Motion & Gait Analysis Lab**

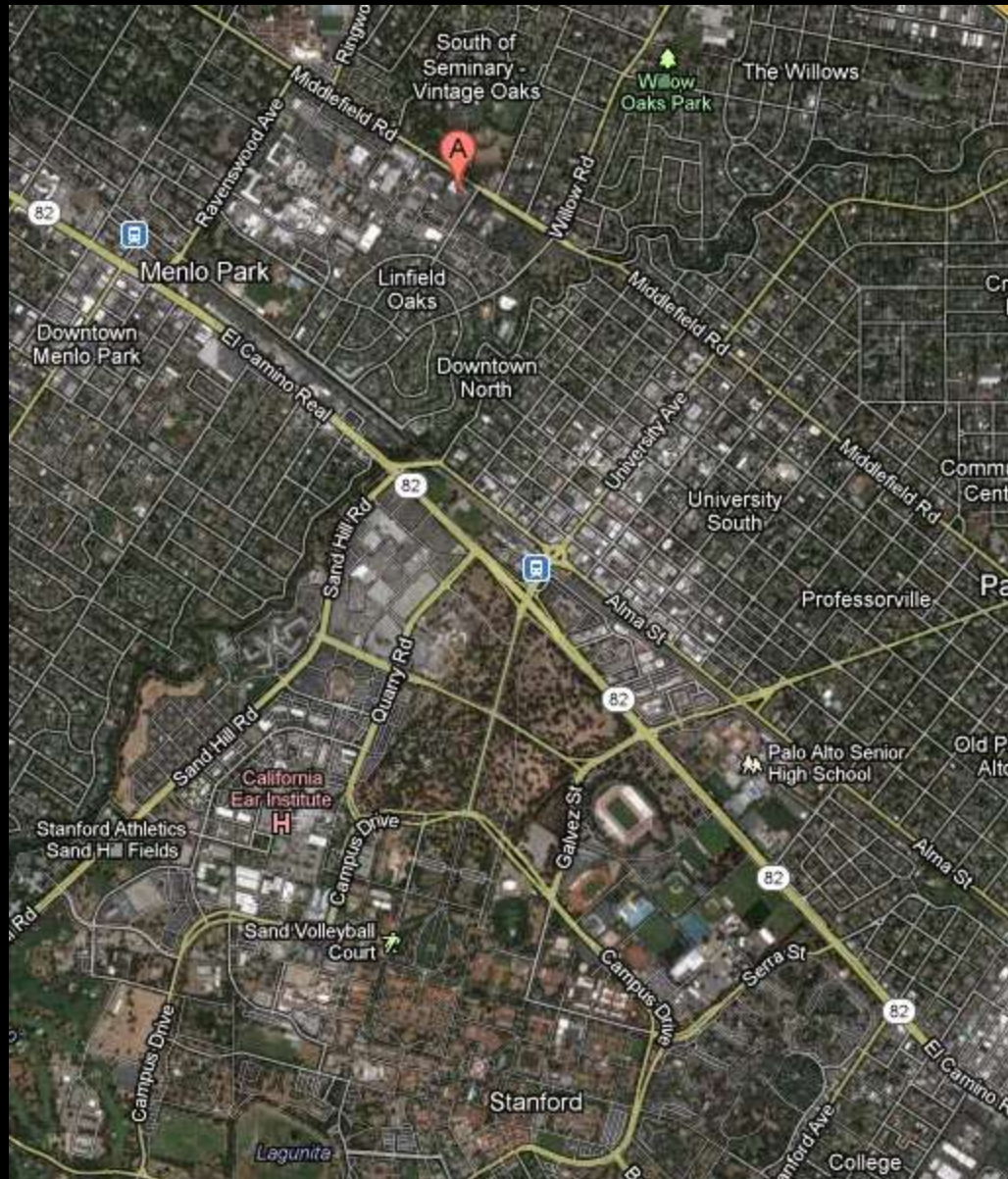


# Motion & Gait Analysis Laboratory

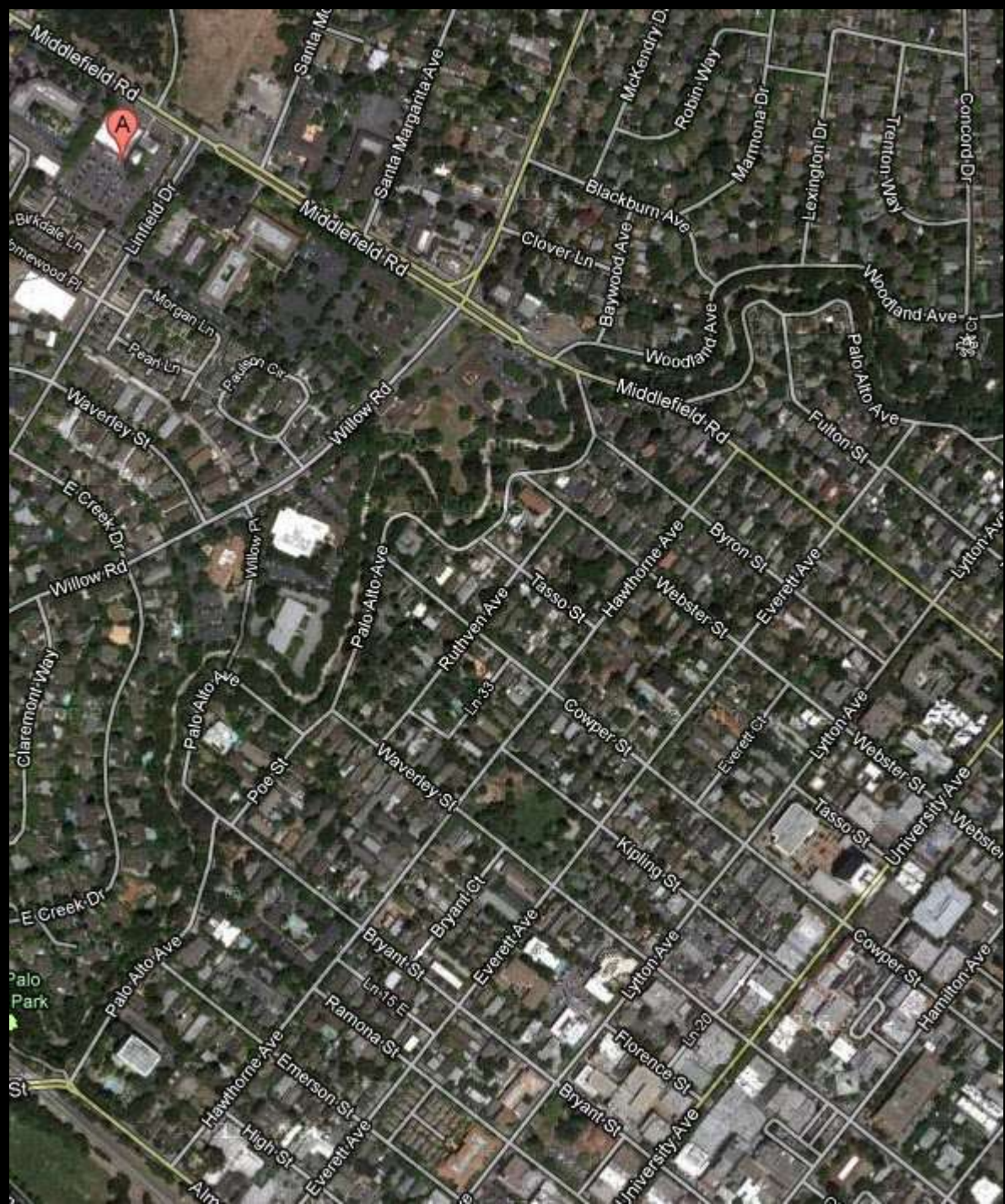


[Link](#)

321 Middlefield Road, Suite 130  
Menlo Park, CA 94025















Middlefield Rd

Middlefield Rd

Spectrum  
Equity Investors

Foundation  
Capital

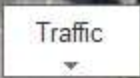
Menlo Medical  
Center

Middlefield Rd

A

Beyond Basics  
Medical Practice







Beyond Basics  
Medical Practice

# Today



Kurt Ohlfs

## **Assistive Technology Opportunities in Autism**



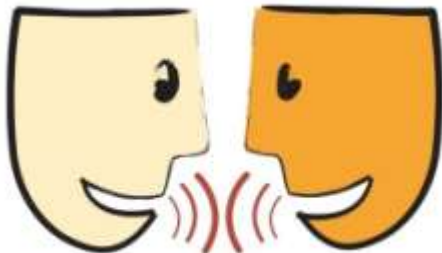
# Short Break



# Break Activities



- Stand up and stretch
- Take a bio-break
- Text message
- Web-surf
- Respond to email
- Talk with classmates
- Reflect on what was presented in class



# Short Break

