

January 31, 2012

ENGR110/210

Perspectives in Assistive Technology



David L. Jaffe, MS



Professor Drew Nelson

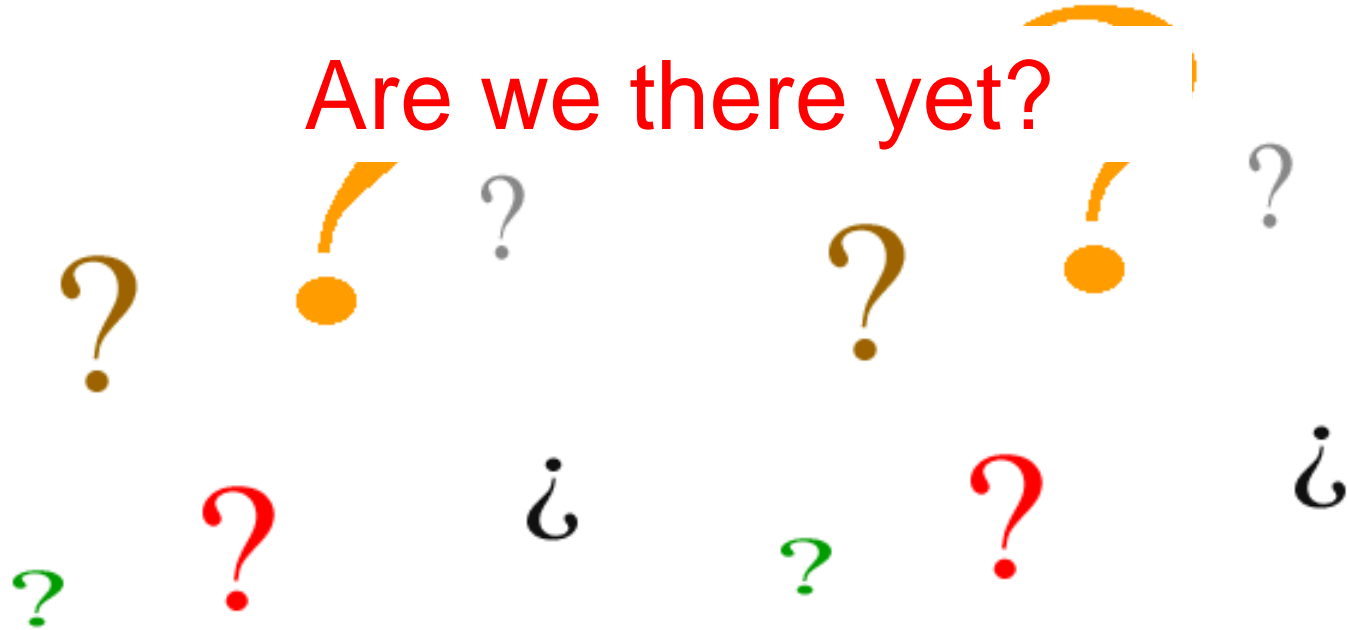


John Thiemer

Questions?



Are we there yet?



Projects

- Hazards
 - People & contacts
 - Parts & supplies
- Think about
 - Team name - now
 - Name of project – should be short
 - Name of device or software
 - Continue to send updates, including photos
- Room 36
- [Stanford Daily article](#)

Old?

Why should we be concerned?

- Changes in physical function
 - Changes in mental function
 - Changes in employment status
 - Changes in outlook on life
 - Increased chance for disability and resulting loss of independence and decreased quality of life
- Concentration peaks at 45
 - Financial skills peak at 53
 - Vocabulary peaks in 60s – 70s

Are you **Old**?

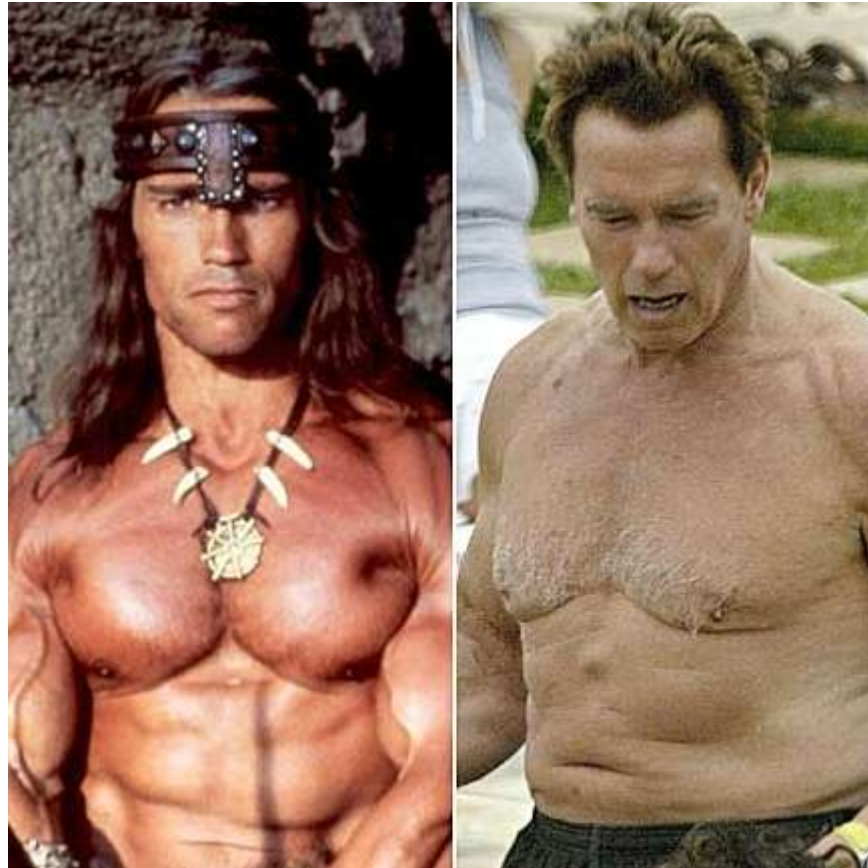


Aging is a continuum

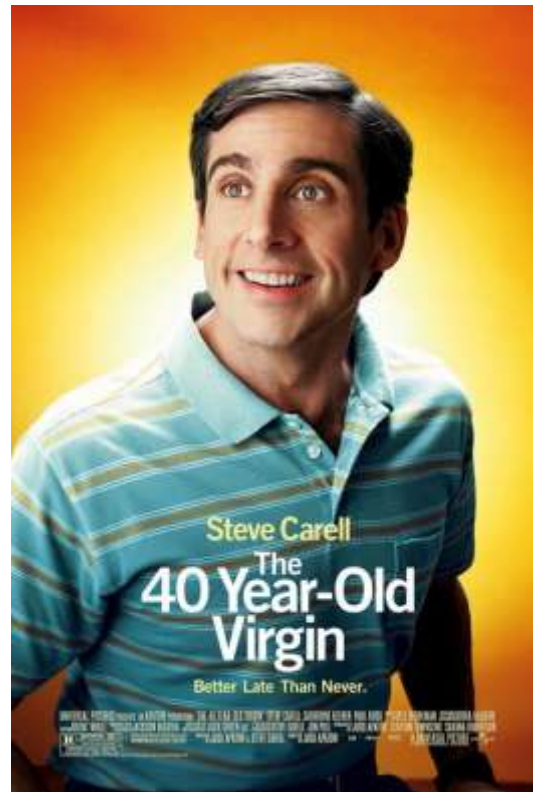
Old is a matter of perspective. Your older brother is always going to be older than you.



Our view of **old** changes as we age and is different for each of us



How do you know if you are **old**?



Everyone gets older every day, but how do you know if you belong to the **old** group?



Twelve Signs You May Be Old



Twelve Signs You May Be Old

12

You are no longer able to procreate



Twelve Signs You May Be Old

11

You see your childhood toys on Antiques Roadshow



Twelve Signs You May Be Old

10

When you talk BS, you are referring to your latest blood sugar reading



Twelve Signs You May Be Old

9

You wish you were younger



Twelve Signs You May Be Old

8

Your peers are considered old



Twelve Signs You May Be Old

7

You are older than the President



Twelve Signs You May Be Old

6

You can find the music you enjoyed when you were growing up
in the "Oldies" section



Twelve Signs You May Be Old

5

People no longer ask you "What do you want to be when you grow up?" - they now ask you "When are you going to retire?" and "What are you going to do when you retire?"



Twelve Signs You May Be Old

4

Your drug of choice is Vitamin C



Twelve Signs You May Be Old

3

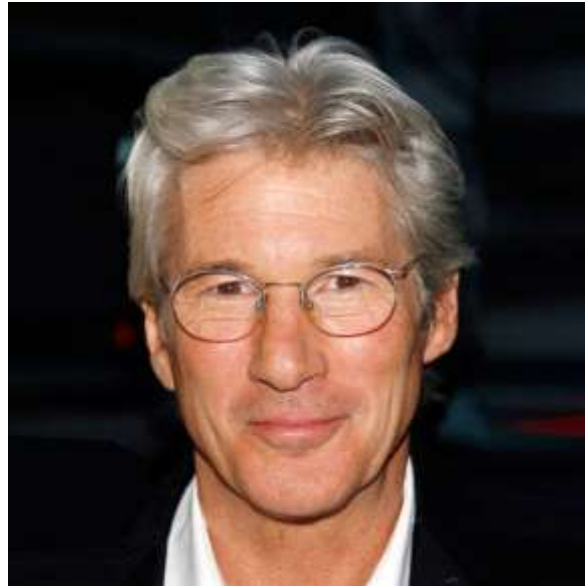
You are cautioned to slow down, not by the Highway Patrol,
but by your doctor



Twelve Signs You May Be Old

2

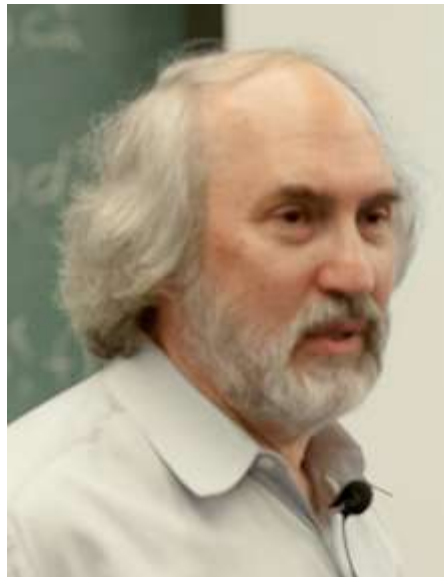
You are considered distinguished because of your gray hair



Twelve Signs You May Be Old

1

You find yourself in a college classroom, not as a student, but as an instructor



Observations

- Changes in your body as well as advances in technology and fashion occur as you age and are markers of the passage of time and differentiate us from older or younger individuals
- You are a summation of all your memories and experiences and are influenced by them
- You are a person of every age (and event) you have experienced: baby, toddler, child, adolescent, teenager, young adult, adult, older adult, senior
- To truly know someone, an understanding of their life is essential.
- For those who are not in the Old group - Why were you born so late?

Dave's Old Survey Questionnaire

- Who was the president when you were born?
- You have enjoyed music on these media:
- You remember a time before:
- You remember:
- You lived through these wars & conflicts:
- You had a:
- You watched:
- You remember this space-related stuff:

Dave's Old Survey Questionnaire

- Your first computer had this much memory:
- Your first word processor was:
- You stored your computer programs and data on:
- Your first printer was:
- Your first programming experience was:
- You considered buying these computers:

Dave's Old Survey Question

- The Beatles are:
 - A misspelling of "beetles"
 - The band Paul McCartney was in before Wings
 - Four mop-heads from UK

Dave's Old Survey Question

- The Beatles are:
 - A misspelling of "beetles"
 - The band Paul McCartney was in before Wings
 - Four mop-heads from UK



Dave's Old Survey Question

- You remember Woodstock as:
 - A city northwest of Chicago
 - Snoopy's bird friend
 - A huge outdoor rock music festival in NY in 1969

Dave's Old Survey Question

- You remember Woodstock as:
 - A city northwest of Chicago
 - Snoopy's bird friend
 - A huge outdoor rock music festival in NY in 1969



Dave's Old Survey Question

- The premise of the TV show "Queen for a Day" was:
 - Guys exploring their feminine side
 - Commoners swapping places with royalty
 - Prizes given to the contestant with the most tear-jerking life story

Dave's Old Survey Question

- The premise of the TV show "Queen for a Day" was:
 - Guys exploring their feminine side
 - Commoners swapping places with royalty
 - Prizes given to the contestant with the most tear-jerking life story



Dave's Old Survey Question

What does "Fill 'er up with ethyl" mean?

Dave's Old Survey Question



**"Fill 'er up with Ethyl, son —
the gas we use back home"**

There's big advantage in taking the Ethyl to you, wherever you drive, that you can get a filling station's best grade of gasoline. That's no star in California and Washington, D. C., or in Missouri and Texas. And the reason why the Ethyl pump means "son" to them.

You get more miles per gallon (proven by standard test) in each gallon than you get in the best regular-grade gasoline and oil used in the United States. That's why the oil company and the Ethyl Gasoline Corporation.

To you, this means 100% performance from your high compression engine . . . and a saving of both gas and oil as Ethyl prevents harmful knock and overheating.

ETHYL

NEXT TIME GET ETHYL . . . A BETTER RUN FOR YOUR MONEY

Dave's Old Survey Question

Complete this ad,

"You wonder where the yellow went when you brush your teeth with _____"

Dave's Old Survey Question

Complete this ad,

"You wonder where the yellow went when you brush your teeth with _____"



Dave's Old Survey Question

Complete this ad, "You can tell its Mattel, it's ____"

Dave's Old Survey Question

Complete this ad, "You can tell its Mattel, it's ____"



Dave's Old Survey Question

What beer is brewed in "the land of sky blue waters"?

Dave's Old Survey Question

What beer is brewed in "the land of sky blue waters"?



When you drink **Hamm's Beer**
...it's almost like being there...
in the land of sky blue waters.

Hamm's
The beer refreshing from the land of sky blue waters,
has more meaning to it than words and numbers can ever describe.

Dave's Old Survey Question

Who wore a 2-way wrist radio and later a 2-way wrist TV?

Dave's Old Survey Question

Who wore a 2-way wrist radio and later a 2-way wrist TV?



Dave's Old Survey Question

What was the princess' name on Howdy Doody?

Dave's Old Survey Question

What was the princess' name on Howdy Doody?



Princess Summerfall Winterspring

Dave's Old Survey Question

What was the clown's name on Howdy Doody?

Dave's Old Survey Question

What was the clown's name on Howdy Doody?



Clarabell

Dave's Old Survey Question

Who was the oldest Mouseketter on Mickey Mouse Club?

Dave's Old Survey Question

Who was the oldest Mouseketter on Mickey Mouse Club?



Dave's Old Survey Question

What puppet from Chicago was the "King of the United States"?

Dave's Old Survey Question

What puppet from Chicago was the "King of the United States"?



Garfield Goose

Dave's Old Survey Question

What product advertised, "A little dab will do ya"?

Dave's Old Survey Question

What product advertised, "A little dab will do ya"?



Thursday



Allison M. Okamura, PhD and
David L. Jaffe, MS



Rehabilitation Robotics

Today



Hilary Douglas

Haas Center for Public Service

*Assistant Director of Community, Engaged
Scholarship*

**Partnership and Prototypes: Learning with
the Community**

Short Break

