

# Communications for Residential Smart-Grid

Yiannis Yiakoumis

# What SG means for the home?

Smart Metering (First Wave Smart-Grid)

PG&E Smart-Meter Electric System



RF-Mesh



RF-Mesh



PG&E Smart-Meter Gas System

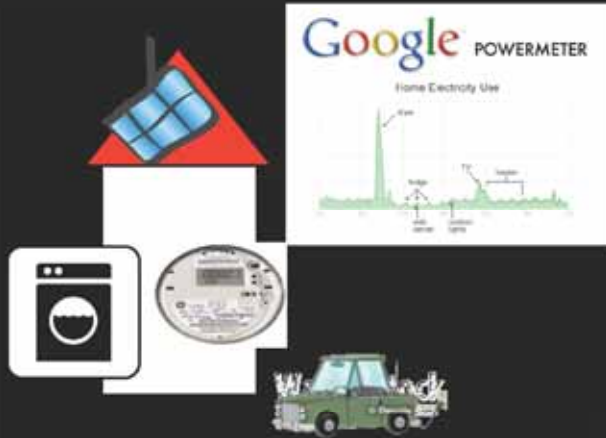
WAN/Cellular



# What SG means for the home?

Second Wave Home Smart-Grid?

(Load, Generation, DR, Load-balancing, Web-apps, Incentives)



?

WAN/  
Cellular

# The “Smart-Grid Network”

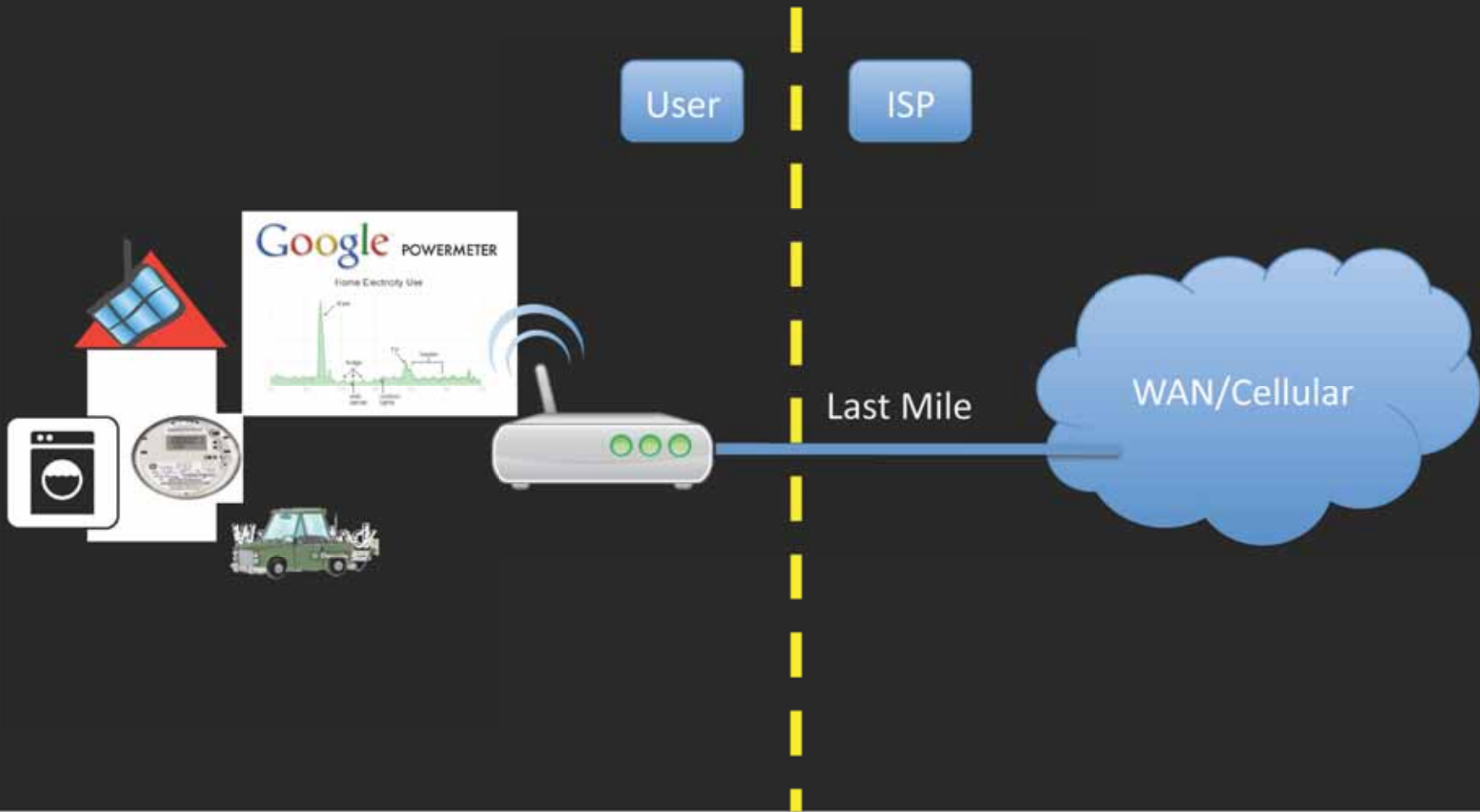
## Current Approach

- Expensive to deploy and operate
- What about others (gas?)
- The Smart-Home is **more** than a utility extension



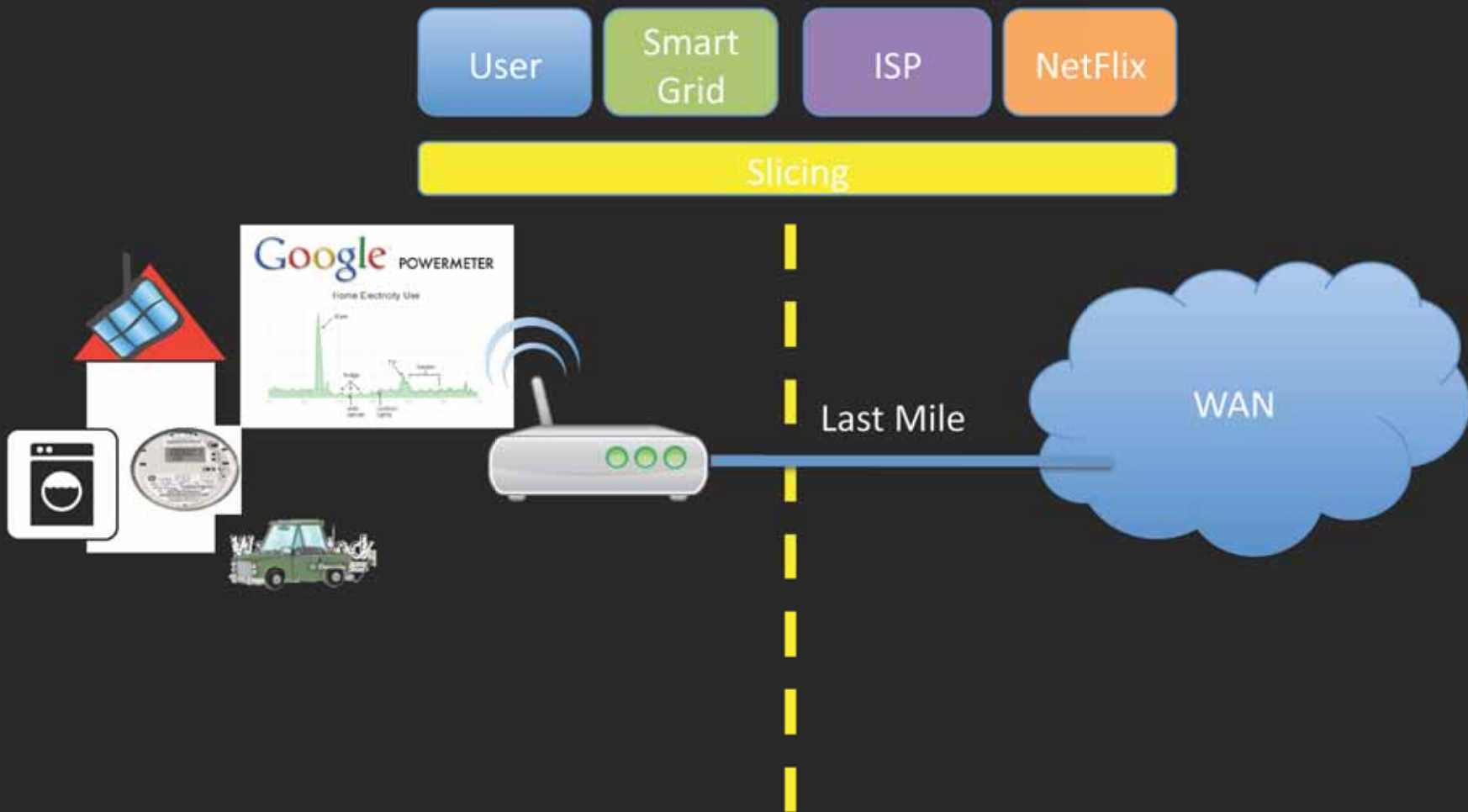
# The Home Network (...with a few changes...)

Proposed Approach



# The Home Network (...with a few changes...)

Proposed Approach



# What needs to change?

Challenges, Misconceptions, Questions

- Infrastructure to and within the home needs to become **slicable** (ISP, Smart-Grid, Smart-Gas)
- Isolation between different **slices (traffic, bandwidth, ...)**
- Each party gets low-level control of the infrastructure

# What needs to change?

Challenges, Misconceptions, Questions

- What are the application needs? BW? Latency?
- IP, TCP, UDP, ...?
- IPSec, VPN, MPLS, QoS,...
- UPnP,...



# What needs to change?

Challenges, Misconceptions, Questions

- Security, Privacy, Complexity
- Flexible policies (Everyone can read smart-meter data, but none can upgrade the firmware)
- Who configures them?

thanks!